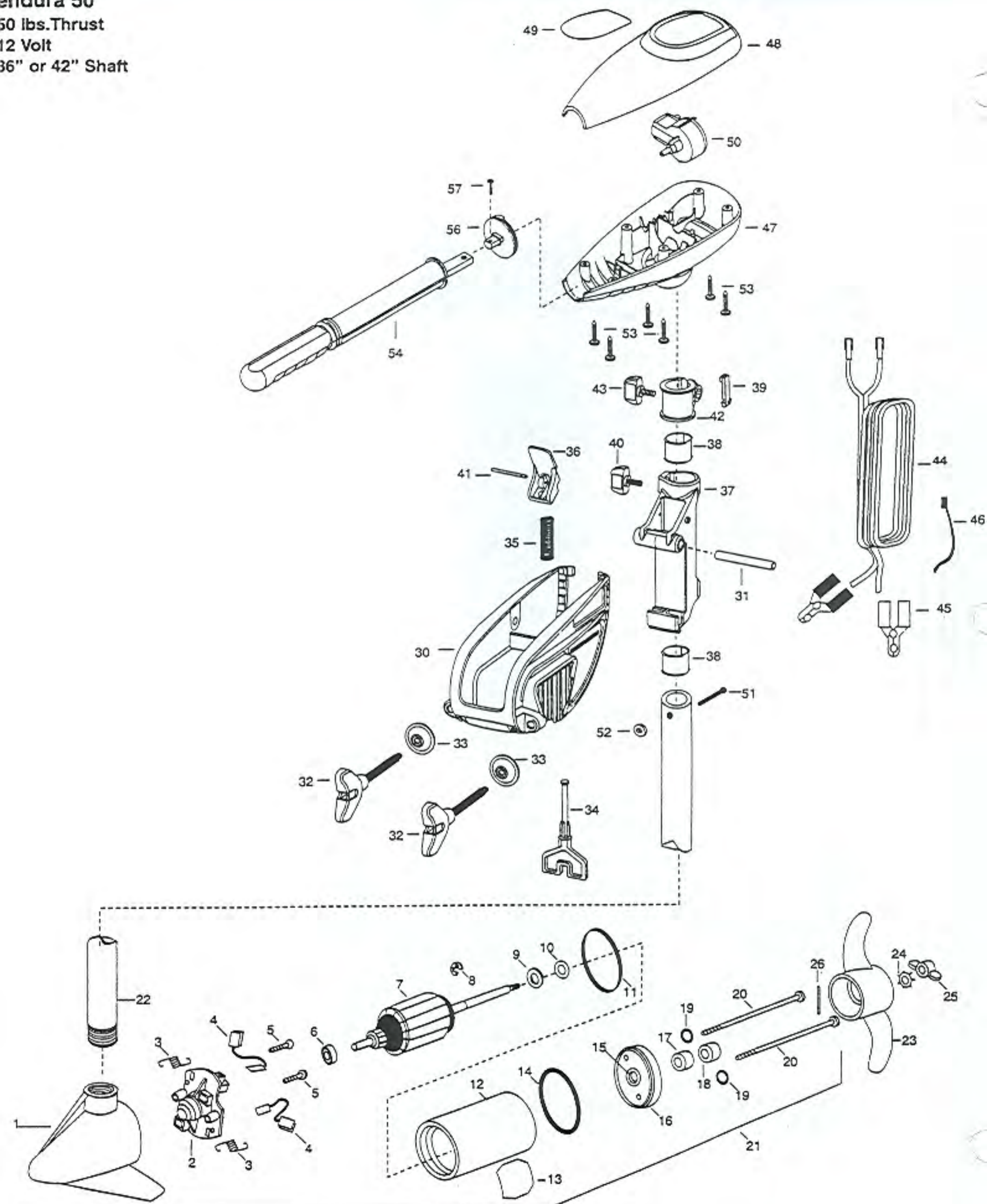


Endura 50
50 lbs. Thrust
12 Volt
36" or 42" Shaft



In the U.S.A., replacement parts may be ordered directly from MINN KOTA Parts Dept., JWA MARINE, 706 Holly Lane, Mankato, Minnesota 56001. In Canada, parts may be ordered from any of the Canadian Authorized Service Centers shown on the enclosed list. Be sure to provide the MODEL and SERIAL numbers of your motor when ordering parts. Please use the correct part numbers from the parts list. Payment for any parts ordered from the MINN KOTA parts department, may be by cash, personal check, Discover Card MasterCard or VISA. To order, call 1-800-227-6433 or FAX 1-800-527-4464.

Fuera de los Estados Unidos, consultar la lista anexa para ubicar el Centro de servicio autorizado MINN KOTA. Asegurar de incluir el número del MODELO y el número de SERIE del motor para el cual se solicitan las piezas. Usar siempre los números de pieza correctos indicados en la lista de piezas.

Hors de États-Unis, voir la liste ci-jointe pour le Centre de Service Agréé MINN KOTA le plus proche. Lors d'une commande, ne pas oublier de fournir le numéro de modèle et le numéro de série du moteur. Toujours mentionner le numéro de pièce exact figurant sur la liste des pièces de rechange.

Fora da América do Norte, queira consultar a lista anexa para identificar o Centro de Serviço Autorizado MINN KOTA. Não deixe de incluir o número do MODELO e o número de SÉRIE do seu motor ao pedir peças. Sempre use os números corretos das peças da lista de peças.

1	409026	BRUSH END HOUSING W/COIL	37	2061810	HINGE-PLASTIC
2	406403	BRUSH PLATE ASSY 3.5/8 DIA	38	2037300	BUSHING-HINGE (2 REQ'D)
3	406082	SPRING- BRUSH (2 REQ'D)	39	2062800	TENSION BLOCK-SNAP IN
4	406071	BRUSH (2 REQ'D)	40	2011385	SCREW, TENSION/KNOB
5	406342	BRUSH PLATE SCREW (2 REQ'D)	41	2060515	PIN, TILT LEVER
6	406010	BALL BEARING	42	2061520	COLLAR-DEPTH
7	406211	ARMATURE ASSEMBLY	43	2011365	SCREW-COLLAR/NEW KNOB
8	405300	E-RING-ARMATURE	44	2050600	LEADWIRE (10 GA) CLIPS
9	406170	WASHER-THRUST (STEEL)	45	2010700	BATTERY CLIP (2 REQ'D)
10	405171	WASHER-NYLATRON THRUST	46	2026300	TIE WRAP
11	406490	GASKET	47	2062510	CONTROL BOX
12	406257	CENTER HOUSING FIELD ASSY	48	2060209	CONTROL BOX COVER
13	2006603	DECAL-LOWER UNIT WHITE	49	2065538	DECAL COVER ENDURA 50
14	406470	O-RING	50	2064023	SWITCH-FWD/REV 5 SP
15	406600	BEARING-(FLANGE,SERVICE ONLY)	51	2033400	SCREW-10-24 X 1-3/4
16	406033	PLAIN END HOUSING	52	2013110	NUT-10-24 HEX
17	406461	SEAL	53	2012100	SCREW-8-18 X 5/8 (6 REQ'D)
18	406471	SEAL-W/CUP	54	2990901	HANDLE ASSEMBLY 5 SPEED
19	405462	O-RING THRU BOLT (2 REQ'D)	56	2060405	PIVOT, HANDLE
20	406353	THRU BOLT (2 REQ'D)	57	2012102	SCREW
21	2099030	MOTOR ASSEMBLY 36"			
	2099032	MOTOR ASSEMBLY 42"			
22	2032052	TUBE COMPOSITE 36"			
	2032053	TUBE COMPOSITE 42"			
23	2091150	PROPELLER (W.WEDGE)			
24	2051700	LOCKWASHER-PROP (MEDIUM)			
25	2053100	NUT-PROP (MEDIUM)			
26	2092600	PIN-DRIVE			
28	2771810	BRACKET & HINGE ASSY (INCLUDES- 29—41)			
29	2771910	BRACKET & HINGE ASSY (INCLUDES- 30,32,33)			
*30	2061910	BRACKET-ORDER 29			
*31	2060510	PIN-HINGE			
*32	2061300	SCREW-CLAMP (2 REQ'D)			
33	2011710	WASHER-CLAMP SCREW (2 REQ'D)			
34	2063605	T-BAR, PLASTIC			
35	2062706	SPRING- (T-BAR)			
36	2067200	LEVER-TILT (RED)			

Endura 50

* This item is part of an assembly. This item cannot be sold separately due to machining and /or assembly that is required.

Endura Transom Series
(includes PowerMax and Spider 48)
Wiring Diagrams

