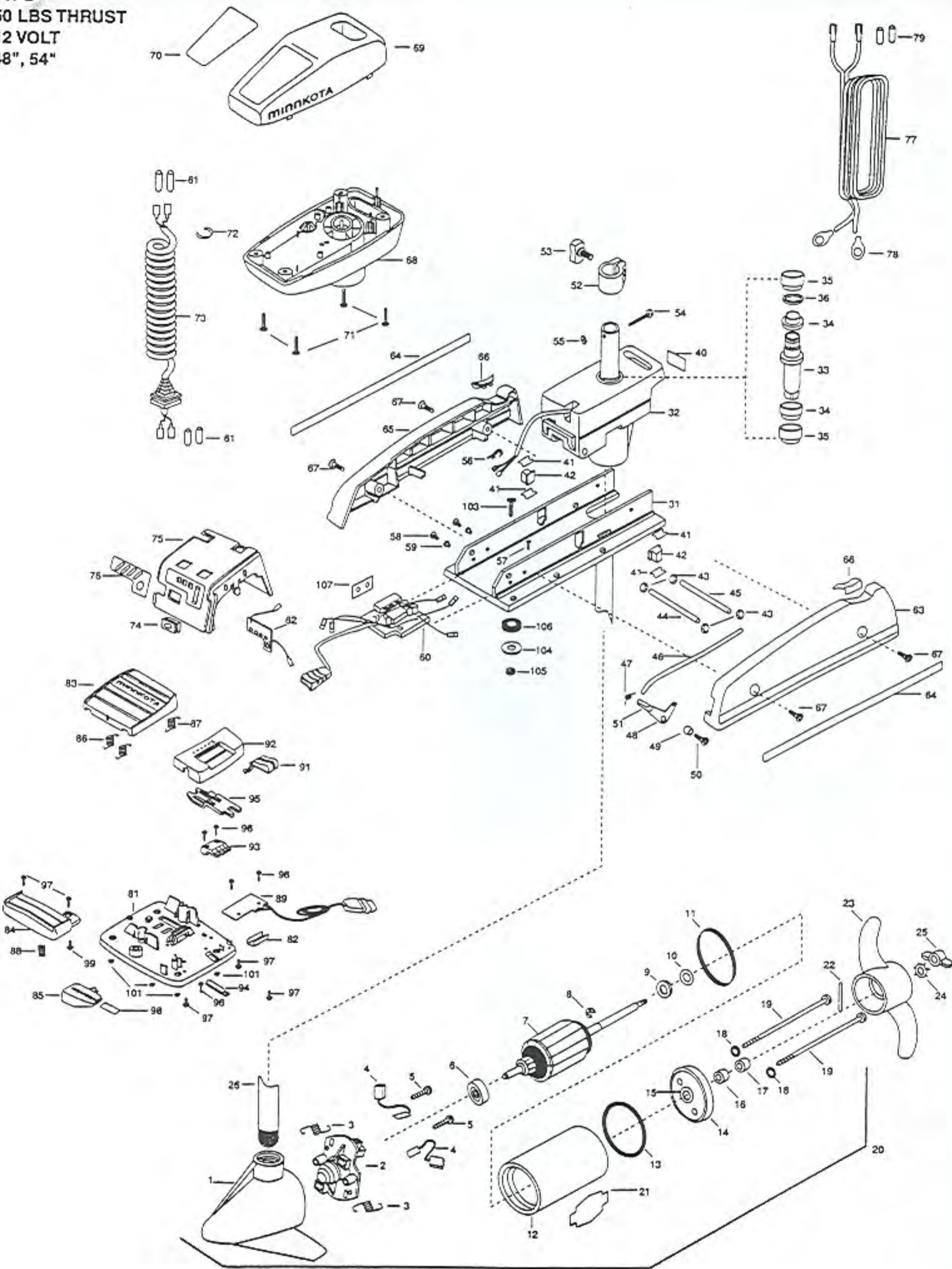


50PD
50 LBS THRUST
12 VOLT
48", 54"



In the U.S.A., replacement parts may be ordered directly from MINN KOTA Parts Dept., JWA MARINE, 706 First Ave., Mankato, Minnesota 56001. In Canada, parts may be ordered from any of the Canadian Authorized Service Centers shown on the enclosed list. Be sure to provide the part and SERIAL numbers of your motor when ordering parts. Please use the correct part numbers from the parts list. Payment for any parts ordered from the MINN KOTA parts department, may be by cash, personal check, Discover Card MasterCard or VISA. To order, call 1-800-227-6433 or FAX 1-800-527-4464.

Fuera de los Estados Unidos, consultar la lista anexa para ubicar el Centro de servicio autorizado MINN KOTA. No deje de incluir el número del MODELO y el número de SERIE del motor para el cual se solicitan las piezas. Usar siempre los números de pieza correctos indicados en la lista de piezas.

Hors de États-Unis, voir la liste ci-jointe pour le Centre de Service Agréé MINN KOTA le plus proche. Lors d'une commande, ne pas oublier de fournir le numéro de modèle et le numéro de série du moteur. Toujours mentionner le numéro de pièce exact figurant sur la liste des pièces de rechange.

Fora da América do Norte, queira consultar a lista anexa para identificar o Centro de Serviço Autorizado MINN KOTA. Não deixe de incluir o número do MODELO e o número de SÉRIE do seu motor ao pedir peças. Sempre use os números corretos das peças da lista de peças.

738-038

1	2300197	BRUSH END HOUSING ASSEMBLY	40	2305519	DECAL-STEERING MOTOR	76	2306607	DECAL BATTERY GAUGE
2	2600019	BRUSH PLATE ASSEMBLY	41	2305110	PAD-PIVOT SUPPORT (4 REQ'D)	77	2090601	LEADWIRE 10GA 44" ASSEMBLY
3	975040	SPRING -TORSION (2 REQ'D)	42	2305101	PAD-PIVOT (2 REQ'D)	78	2020700	RING TERMINAL (2 REQ'D)
4	188038	BRUSH ASSEMBLY	43	2013100	NUT-SPEED (4 REQ'D)	79	2065400	WIRE INSULATOR-LARGE 1-3/4 (2 REQ'D)
5	830002	SCREW -SELF THREADED 8-32X1 (2 REQ'D)	44	2300500	PIN-LATCH	80	2774700	FOOT PEDAL ASSY- (INCLUDES ITEMS 81-99)
6	140010	BEARING -BALL	45	2300510	PIN-PIVOT	81	2304511	FOOT PEDAL-BASE
7	2100098	ARMATURE ASSEMBLY	46	2303610	ROD-RELEASE	82	2308500	WEAR PLATE
8	788015	RETAINING RING	47	2302700	SPRING-RELEASE LEVER	83	2304518	FOOT PEDAL-UPPER
9	990067	WASHER -STEEL THRUST (AS REQ'D)	48	2303710	LEVER-RELEASE	84	2304520	FOOT PEDAL-LOWER
10	990070	WASHER -NYLATRON (AS REQ'D)	49	2301700	SPACER-RELEASE LEVER	85	2307210	LEVER MOM/CON
11	337036	GASKET	50	2303430	SCREW- 1/4-20 X 5/8	86	2302730	SPRING-LONG-UPPER PEDAL (2 REQ'D)
12	2200101	CENTER HOUSING FIELD ASSEMBLY	51	2300101	RELEASE-KNOB	87	2302731	SPRING-SHORT-UPPER PEDAL
13	701081	O-RING	52	2031521	COLLAR- DRIVE W/INSERT	88	2302732	SPRING-LOWER PEDAL
14	2400101	PLAIN END HOUSING ASSEMBLY	53	2011365	SCREW-COLLAR W/KNOB	89	2304012	CNTRL BRD ASSEMBLY FP W/CORD
15	144049	FLANGE BEARING (SERVICE ONLY)	54	2033400	SCREW-10-24 X 1-3/4	91	2300120	KNOB-SPEED SELECTOR
16	880003	SEAL	55	2013110	NUT-HEX	92	2300121	HOUSING-SPEED SELECTOR
17	880006	SEAL W/SHIELD	56	2302935	STRAIN RELIEF-DRIVE HOUSING	93	2302840	ACTUATOR-BOARD
18	701008	O-RING -THRU BOLT (2 REQ'D)	57	2332100	SCREW-8-32 X 3/8	94	2302841	ACTUATOR-MOM/CON
19	830042	THRU BOLT 10-32X8.83 (2 REQ'D)	58	2332101	SCREW-8-32 X 1/2 (2 REQ'D)	95	2302842	ACTUATOR-STEERING)
20	2099031	MOTOR ASSEMBLY 48"	59	2301710	WASHER-INSUL. TRANSFER BAR (2 REQ'D)	96	2302100	SCREW-6-20 X 1/2 (5 REQ'D)
	2099034	MOTOR ASSEMBLY 54"	60	2304014	CNTRL BOARD ASSEMBLY (INCLUDES 107)	97	2372100	SCREW-8-18 X 5/8 (5 REQ'D)
21	2006603	DECAL -LOWER UNIT WHITE	61	2305400	SHRINK TUBE-3/8 OD (4 REQ'D)	98	2266610	DECAL-ON / OFF SWITCH
22	2092600	PIN -DRIVE	62	2034037	BATTERY METER- ELECTRIC 12V	99	2335130	BUMPER- ACTUATOR
23	2091150	PROPELLER	63	2993806	SIDEPLATE (LEFT) W/REST PAD	100	2994807	BAG ASSEMBLY- (RUBBER BUMPERS)
24	2051700	LOCKWASHER	64	2305560	DECAL SIDEPLATE (2 REQ'D)	*101	2305131	RUBBER BUMPER (4 REQ'D)
25	2053100	NUT -PROP	65	2993906	SIDEPLATE (RIGHT) W/REST PAD	102	2994803	BAG ASSY- (BOLTS, NUTS, WASHERS)
26	2032054	TUBE 48"	66	2305150	REST PAD	*103	2153501	BOLT-MOUNTING- STGD (4 REQ'D)
	2032055	TUBE 54"	67	2303430	SCREW-1/4-20 X 5/8 (4 REQ'D)	*104	2151726	WASHER-STANDARD 5/16 (4 REQ'D)
*31	2991935	BASE ASSEMBLY	68	2302512	CONTROL BOX	*105	2153100	NUT-MOUNTING (4 REQ'D) (4 REQ'D)
32	2301834	DRIVE HOUSING	69	2300215	CONTROL BOX COVER	*106	2301720	WASHER-MOUNTING RUBBER (6 REQ'D)
33	2032010	DRIVE HOUSING SLEEVE	70	2315627	DECAL-COVER 50PD	*107	2305141	INSULATING PAD
*34	2307302	BUSHING- INSIDE (2 REQ'D) ORDER 37	71	2012100	SCREW-8-18 X 5/8 (4 REQ'D)			
*35	2307303	BUSHING- OUTSIDE (2 REQ'D) ORDER 37	72	2303006	PIG RING			
*36	2304600	O-RING ORDER 37	73	2301232	COIL CORD-W/STRAIN RELIEF 54"			
37	2887301	BUSHING KIT (INCLUDES 34, 35, 36)		2301231	COIL CORD-W/STRAIN RELIEF 48"			
38	2302221	DRIVE HOUSING GEAR	74	2302920	GROMMET-LEADWIRE			
*39	2307040	DRIVE HOUSING MOTOR ASSEMBLY	75	2306538	COVER-SPD CONTROL			

50PD

PARTS LIST

* This item is part of an assembly. This item cannot be sold separately due to machining and /or assembly that is required.

Wiring Diagrams

765MXT, 40PD, 44PD, 50PD

