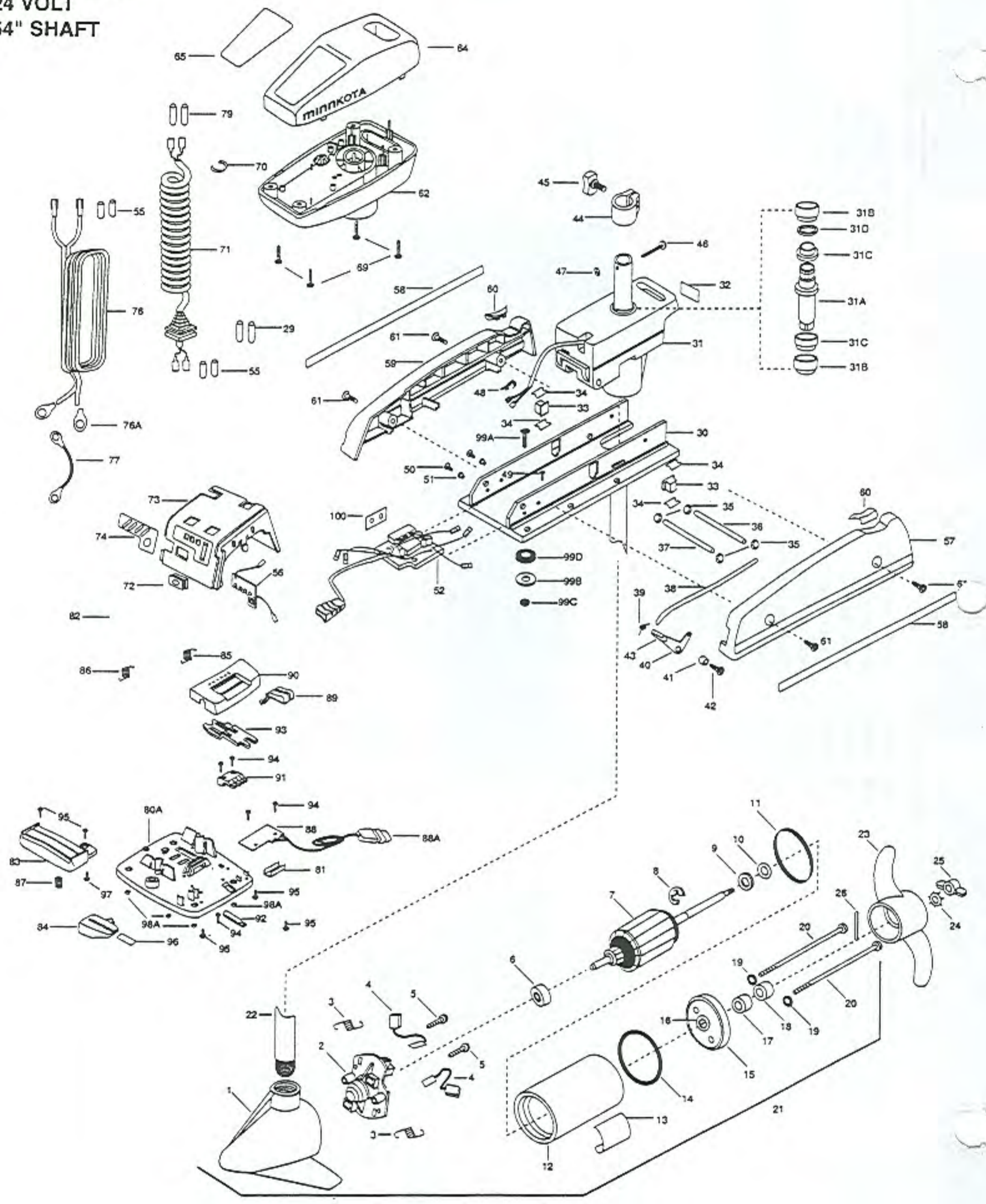


724
48 LBS. THRUST
24 VOLT
54" SHAFT



In the U.S.A., replacement parts may be ordered directly from MINN KOTA Parts Dept., JWA MARINE, 706 1st Lane, Mankato, Minnesota 56001. In Canada, parts may be ordered from any of the Canadian Authorized Service Centers shown on the enclosed list. Be sure to provide the make, model and SERIAL numbers of your motor when ordering parts. Please use the correct part numbers from the parts list. Payment for any parts ordered from the MINN KOTA parts department, may be by cash, personal check, Discover Card MasterCard or VISA. To order, call 1-800-227-6433 or FAX 1-800-527-4464.

Fuera de los Estados Unidos, consultar la lista anexa para ubicar el Centro de servicio autorizado MINN KOTA. Asegurar de incluir el número del MODELO y el número de SERIE del motor para el cual se solicitan las piezas. Usar siempre los números de pieza correctos indicados en la lista de piezas.

Hors de États-Unis, voir la liste ci-jointe pour le Centre de Service Agréé MINN KOTA le plus proche. Lors d'une commande, ne pas oublier de fournir le numéro de modèle et le numéro de série du moteur. Toujours mentionner le numéro de pièce exact figurant sur la liste des pièces.

Fora da América do Norte, consultar a lista anexa para identificar o Centro de Serviço Autorizado MINN KOTA. Não deixe de incluir o número do MODELO e o número de SÉRIE do seu motor ao pedir peças. Sempre use os números corretos das peças da lista de peças.

1	409023	END BELL - FRONT	35	2013100	NUT-SPEED (4 REQ'D)	80A	2304511	FOOT PEDAL-BASE
2	406403	BRUSH PLATE ASSEMBLY	36	2300500	PIN-LATCH	81	2308500	WEAR PLATE
3	406082	BRUSH SPRING 724 (2 REQ'D)	37	2300510	PIN-PIVOT	82	2304516	FOOT PEDAL-UPPER
4	406071	BRUSH ASSEMBLY (2 REQ'D)	38	2303810	ROD-RELEASE	83	2304520	FOOT PEDAL-LOWER
5	406342	BRUSH PLATE SCREW (2 REQ'D)	39	2302700	SPRING-RELEASE LEVER	84	2307210	LEVER MOM/CON
6	406010	BALL BEARING	40	2303710	LEVER-RELEASE	85	2302730	SPRING-LONG-UPPER PEDAL
7	406207	ARMATURE ASSEMBLY	41	2301700	SPACER-RELEASE LEVER	86	2302731	SPRING-SHORT-UPPER PEDAL
8	405300	E-RING	42	2303430	SCREW- 1/4-20 X 5/8	87	2302732	SPRING-LOWER PEDAL
9	406170	THRUST WASHER- STEEL	43	2300101	RELEASE-KNOB	88	2304012	CONTROL BOARD ASSEMBLY-FOOT PEDAL
10	405171	THRUST WASHER- NYLATRON	44	2031521	COLLAR- DRIVE W/INSERT	*88A	2300730	CONTROL CORD ASSEMBLY
11	406490	GASKET	45	2011365	SCREW-COLLAR W/KNOB	89	2300120	KNOB-SPEED SELECTOR
12	409253	CENTER SECTION W/MAGNETS	46	2033400	SCREW-10-24 X 1-3/4	90	2300121	HOUSING-SPEED SELECTOR
13	2006609	DECAL - MOTOR	47	2013110	NUT-HEX	91	2302840	ACTUATOR-BOARD
14	406470	O-RING	48	2302935	STRAIN RELIEF-DRIVE HOUSING	92	2302841	ACTUATOR-MOM/CON
15	406033	PLAIN END HOUSING	49	2332100	SCREW-8-32 X 3/8	93	2302842	ACTUATOR-STEERING
16	406600	FLANGE BEARING (SERVICE CENTER ONLY)	50	2332101	SCREW-8-32 X 1/2 (2 REQ'D)	94	2302100	SCREW-6-20 X 1/2 (5 REQ'D)
17	406481	SEAL	51	2301710	WASHER-INSUL. TRANSFER BAR (2 REQ'D)	95	2372100	SCREW-8-18 X 5/8 (5 REQ'D)
18	406471	SEAL- CUP	52	2304033	CNTRL BROAD ASSEMBLY 24V PWR D	96	2266610	DECAL-ON / OFF SWITCH
19	405462	O-RING - THRU BOLT (2 REQ'D)	55	2305400	SHRINK TUBE- 3/8 OD (4 REQ'D)	97	2335130	BUMPER- ACTUATOR
20	406353	THRU BOLT (2 REQ'D)	56	2034038	BATTERY METER- ELECTRIC 24V	98	2994807	BAG ASSEMBLY- (RUBBER BUMPERS)
21	2099022	MOTOR ASSEMBLY- 54*	57	2993806	SIDEPLATE (LEFT) W/REST PAD	*98A	2305131	RUBBER BUMPER (4 REQ'D)
22	2032055	TUBE 54*	58	2305560	DECAL SIDEPLATE-GOLD (2 REQ'D)	99	2994803	BAG ASSY- (BOLTS, NUTS, WASHERS)
23	2091150	PROPELLER (W.WEDGE)	59	2993906	SIDEPLATE (RIGHT) W/REST PAD	*99A	2153501	BOLT-MOUNTING- STGD (4 REQ'D)
24	2051700	LOCKWASHER-PROP	60	2305150	REST PAD	*99B	2151726	WASHER-STANDARD 5/16 (4 REQ'D)
25	2053100	NUT-PROP	61	2303430	SCREW-1/4-20 X 5/8 (4 REQ'D)	*99C	2153100	NUT-MOUNTING (4 REQ'D) (4 REQ'D)
26	2092600	PIN-DRIVE	62	2302512	CONTROL BOX	*99D	2301720	WASHER-MOUNTING RUBBER (6 REQ'D)
*29	2991935	BASE ASSEMBLY	64	2300215	CONTROL BOX COVER	100	2315105	INSULATING PAD
30	2301912	BASE MACHINED	65	2305606	DECAL-COVER			
31	2301834	DRIVE HOUSING	69	2012100	SCREW-8-18 X 5/8 (4 REQ'D)			
31A	209200T	DRIVE HOUSING SLEEVE	70	2303005	PIG RING			
*31B	2307302	BUSHING- INSIDE (2 REQ'D) ORDER 31E	71	2301211	COIL CORD-W/STRAIN RELIEF 48" 54"			
*31C	2307303	BUSHING- OUTSIDE (2 REQ'D) ORDER 31E	72	2302920	GROMMET-LEADWIRE			
*31D	2304600	O-RING ORDER 31E	73	2306538	COVER-SPD CONTROL			
31E	2887301	BUSHING KIT (INCLUDES 31B, 31C, 31D)	74	2306607	DECAL BATTERY GAUGE			
31F	2302221	DRIVE HOUSING GEAR	76	2090601	LEADWIRE 10GA 44" ASSEMBLY			
*31G	2307030	DRIVE HOUSING MOTOR ASSEMBLY	76A	2020700	RING TERMINAL (2 REQ'D)			
32	2305519	DECAL-STEERING MOTOR	77	2090620	CABLE CONNECTOR 24V			
33	2305110	PAD-PIVOT SUPPORT (4 REQ'D)	79	2065400	WIRE INSULATOR-LARGE 1-3/4 (2 REQ'D)			
34	2305101	PAD-PIVOT (2 REQ'D)	80	2994700	FOOT PEDAL ASSY- (INCLUDES ITEMS 80-97)			

* This item is part of an assembly. This item cannot be sold separately due to machining and /or assembly that is required.

724, 60PD, 64PD, 65PD

