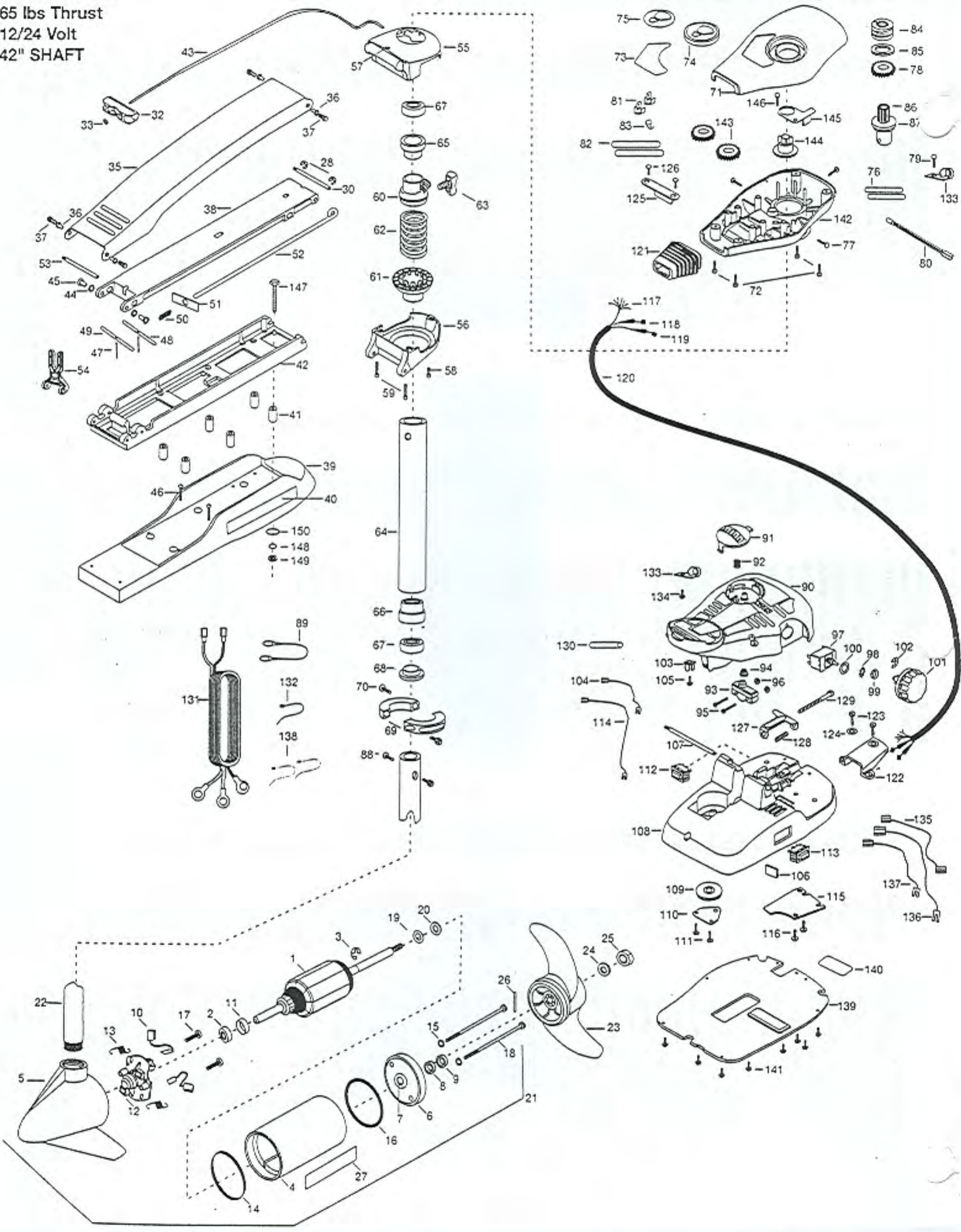


MAX65/SC -42
 65 lbs Thrust
 12/24 Volt
 42" SHAFT



In the U.S.A., replacement parts may be ordered directly from MINN KOTA Parts Dept., WA MARINE, 706 Holly Lane, Mankato, Minnesota 56001. In Canada, parts may be ordered from any of the Canadian Authorized Service Centers shown on the enclosed list. Be sure to provide the model and serial numbers of your motor when ordering parts. Please use the correct part numbers from the parts list. Payment for any parts ordered from the MINN KOTA parts department, may be by cash, personal check, Discover Card MasterCard or VISA. To order, call 1-800-227-6433 or FAX 1-800-527-4464.

Fuera de los Estados Unidos, consultar la lista anexa para ubicar el Centro de servicio autorizado MINN KOTA. No dejar de incluir el número del MODELO y el número de SERIE del motor para el cual se solicitan las piezas. Usar siempre los números de pieza correctos indicados en la lista de piezas.

Hors de États-Unis, voir la liste ci-jointe pour le Centre de Service Agréé MINN KOTA le plus proche. Lors d'une commande, ne pas oublier de fournir le numéro de modèle et le numéro de série du moteur. Toujours mentionner le numéro de pièce exact figurant sur la liste des pièces de rechange.

Fora da América do Norte, queira consultar a lista anexa para identificar o Centro de Serviço Autorizado MINN KOTA. Não deixa de incluir o número do MODELO e o número de SÉRIE do seu motor ao pedir peças. Sempre use os números corretos das peças da lista de peças.

1	2-100-009	ARMATURE ASSEMBLY	53	2260506	HINGE-PIN HEADLESS ZINC	102	2263000	E-RING TRU-ARC#5133-43
2	140-010	BALL BEARING	54	2293811	YOKE,MAX MNT-POLYPROPYLENE	103	2260730	CONNECTOR 1/4 MALE TAB OD
3	788-015	RETAINING RING	■	2771918	BOWGUARD ASSEMBLY	104	2260315	CONNECTING WIRE-7-1/2"
4	431-006	CENTER HOUSING ASSEMBLY	55	2771992	BRACKET BASE TOP/INST ASSEMBLY	105	2332103	SCREW-6-20 X 3/8 THD SS
5	2-300-039	HOUSING BRUSH END 3.62 TXT W/SPC	56	2991999	BRKT BTM/BEARING FW ASSEMBLY	106	2266413	TENSION SCREW PLATE FT PED
6	2-400-101	PLAIN END HOUSING ASSEMBLY	57	2232351	EYELET ROPE	107	2260511	PIN-PIVOT A/T FT PDL
7	144-049	BEARING - FLANGE (SERVICE ONLY)	58	2263402	SCREW 1/4-20 X 3/4" ZINC	108	2774551	FT PED BASE/PIN ASSEMBLY
8	880-003	SEAL	59	2263404	SCREW-1/4-20X2 1/4 SHCP SS [2.EA]	109	2262301	PULLEY- FOOT PEDAL
9	880-006	SEAL WITH SHIELD	60	2261525	SPRING-SLEEVE UPPER	110	2266400	COVER-PULLEY STAMPING
10	188-036	BRUSH ASSEMBLY [2.EA]	61	2261535	SPRING SLEEVE, LOWER	111	2301310	SCREW-8-18 X 1/2 SS [2.EA]
11	725-050	BRUSH RETENTION- PAPER TUBE	62	2262706	SPRING, BOWGUARD, NIK PL	112	2254031	SWITCH-MOM/OFF/CON
12	738-036	BRUSH PLATE W/HOLDER	63	2011365	SCREW- COLLAR/NEW KNOB	113	2254032	SWITCH-12V/OFF/24V 65AT
13	975-040	SPRING - TORSION [2.EA]	■	2772012	TUBE W/BEARING RACE ASSEMBLY	114	2260300	CONNECTING WIRE-14"
14	337-036	GASKET	64	2272069	TUBE OUTER-21" 4 HOLES	115	2266412	SWITCH PLATE, FT PEDAL
15	701-008	O-RING, THRU-BOLT [2.EA]	65	2266260	BEARING RACE-	116	2332103	SCREW-6-20 X 3/8 THD SS [2.EA]
16	701-081	O-RING	66	2266220	BEARING RACE-STEEL	117	2261208	WIRE HARNESS, A/T FT. PHD
17	830-007	SCREW-8-32 [2.EA]	67	2266000	BEARING BALL-STEEL [2.EA]	118	2267500	CABLE ASSY-RIGHT (5')
18	830-008	THRU-BOLT 10-32X9.2 [2.EA]	68	2266115	BEARING CONE	119	2267510	CABLE ASSY-LEFT (5')
19	990-067	WASHER- STEEL THRUST	69	2771617	COLLAR HALF-ZINC- 2 PER KIT	120	2265430	CABLE JACKET (5')
20	990-070	WASHER - NYLATRON	70	2263452	SCREW-1/4-20 X 3/4 SHCS [2.EA]	121	2265110	BOOT-CONTROL BOX
21	2098034	MOTOR ASSEMBLY 24V FW 47.75" LD.	71	2260265	COVER-CTR BOX A/T '96	122	2265115	BOOT-FOOT PEDAL BASE
22	2032061	TUBE (COMP) W/CSK HOLE-43 3/4	72	2372100	SCREW-8-18 X 5/8 THD SS [4.EA]	123	2372100	SCREW-8-18 X 5/8 THD SS [2.EA]
■	1378122	PROP KIT	73	2265824	DECAL-COVER MAX65/SC	124	2261714	WASHER-MAXXUM FT PDL [2.EA]
23	2091150	PROPELLER (W.WEDGE)	74	2260150	POINTER DISC TRNSLCNT RED	125	2261900	BRACKET-CONDUIT
24	2151726	WASHER-5/16 STD SS	75	2265800	DECAL-INDICATOR	126	2301310	SCREW-8-18 X 1/2 SS [2.EA]
25	2053101	NUT-PROP,NYLOC (MED) 5/16 SS	76	2375400	SHRINK TUBE-1/4OD X 1-3/4 [2.EA]	127	2263210	BRACKET-CONDUIT ADJUSTMEN
26	2092600	PIN-DRIVE (95-4HP'S) SS	77	2053414	SCREW-#8-32 X 1/2 TRI-LOBE [3.EA]	128	2262720	SPRING-CONDUIT AD
27	2006603	DECAL-LOWER UNIT, WHITE	78	2267800	GEAR-INDICATOR	129	2263462	SCREW-1/4-20 X 2" SS PPH
28	2263010	E-RING 3/8 DIA. SHAFT [2.EA]	79	2301310	SCREW-8-18 X 1/2 SS	130	2335400	SHRINK TUBE-1/2 OD X 2"
29	2293500	BUSHING-SHOULDER UPPER ARM[2.EA]	80	2264019	LIGHT/INDICATOR MAX65/SC	131	2090611	LEADWIRE 12/24V 10GA. RING
30	2260513	HINGE PIN-LOWER	81	2020713	TERMINAL-ADAPTOR, MAX [2.EA]	132	2256300	TIE WRAP-5.5" BLACK
32	2150400	PULL-GRIP	82	2335400	SHRINK TUBE-1/2 OD X 2" [2.EA]	133	2263201	CLAMP WIRE HARNESS MICRO [2.EA]
33	2151700	WASHER-EYE SHAFT(5/62 OD)	83	2052511	CABLE CLAMP, 1/4" VANTAGE	134	2332103	SCREW-6-20 X 3/8 THD SS
■	2991975	MOUNT, BOW ASSY, FW STD	84	2232360	PULLEY-CABLE DRUM	135	2260301	CONNECTING WIRE (SWITCH)
35	2264206	ARM-UPPER FW,STD	85	2261730	WASHER-NYLON A/T CON B	136	2260312	WIRE,BLK W/WHIT STRP 19 1/2
36	2293501	BUSHING, STAINLESS STEEL [4.EA]	■	2776203	PINION/RACE ASSEMBLY	137	2260322	WIRE,BLK W/BLUE STRP-12"
37	2263500	BOLT, SHOULDER (MAXXUM) [4.EA]	*86	2267805	PINION DRIVE ZINC PLATED	138	2256301	TIE WRAP-5.5" WHITE
38	2774315	ARM-LOWER ASSEMBLY,STD,FW,EXT	*87	2266246	TOP BEARING RACE	139	2266414	BOTTOM PLATE MAX FOOT PED
39	2263912	MOTOR REST STD MAXXUM	88	2263410	SCREW-8-32 X 5/16 ZN PL [2.EA]	140	2365107	INSULATING PAD (2.3 X 3.2
40	2265514	DECAL-MAXXUM,MOTOR REST [2.EA]	89	2340610	CONNECTOR CABLE- (12")	141	9953104	SCREW-8 X 1/2" SS [8.EA]
41	2261505	SPACER, MOTOR REST [6.EA]	90	2790002	FOOT PEDAL/PLUG ASSEMBLY (AT)	142	2262531	CONTROL BOX-PLASTIC
42	2771979	BOWPLATE,STD FW-MACHINSERT	91	2263700	PUSH-BUTTON FOOT PEDAL	143	2267800	GEAR-INDICATOR [2.EA]
43	2251601	ROPE (40"). MAXXUM MOUNT	92	2302732	SPRING-LOWER PEDAL SS	144	2262220	INDICATOR-DRIVE
44	2261707	WASHER-3/8"X1/2"X.016 [2.EA]	93	2264020	SWITCH MOMENTARY	145	2261905	BRACKET/INDICATOR
45	2236000	BEARING NYLINER-[2.EA]	94	2265140	BOOT-MICROSWITCH	146	2301310	SCREW-8-18 X 1/2 SS
46	2263434	SCREW, 8-18 X 1" PPH SS [2.EA]	95	2262114	SCREW-MOUNTING/SWITCH [2.EA]	■	2994830	BAG ASSEMBLY-MAXXUM
47	2152610	SPRING-PIN LOCKBAR [2.EA]	96	2233100	NUT-SWITCH MOUNT [2.EA]	147	2263431	SCREW 1/4-20 X 3.5 PPH [6.EA]
48	2233600	LOCK BAR- BOW MOUNT	97	2264026	SWITCH-5 SPEED (ALL TERRAIN)	148	2261713	WASHER-1/4 FLAT SS [6.EA]
49	2233602	LOCK BAR, REAR - ZINC	98	2261701	LOCKWASHER-STAR	149	2263103	NUT-1/4-20 NYLOCK-JAM SS [6.EA]
50	2152700	SPRING-LOCKBAR CAD.PLTD	99	2263105	NUT-HEX	150	2301720	WASHER-MOUNTING RUBBER [6.EA]
51	2262703	SPRING STOP	100	2261715	SPACER-SWITCH 5 SP MODELS			
52	2153602	EYE SHAFT-2LOCKBAR STD PL	101	2260170	KNOB-SPEED CONTROL (5 SPD)			

This item is part of an as...

This item cannot be sold separately due to machining and /or assembly that is required.

PARTS LIST

MAX65/SC

