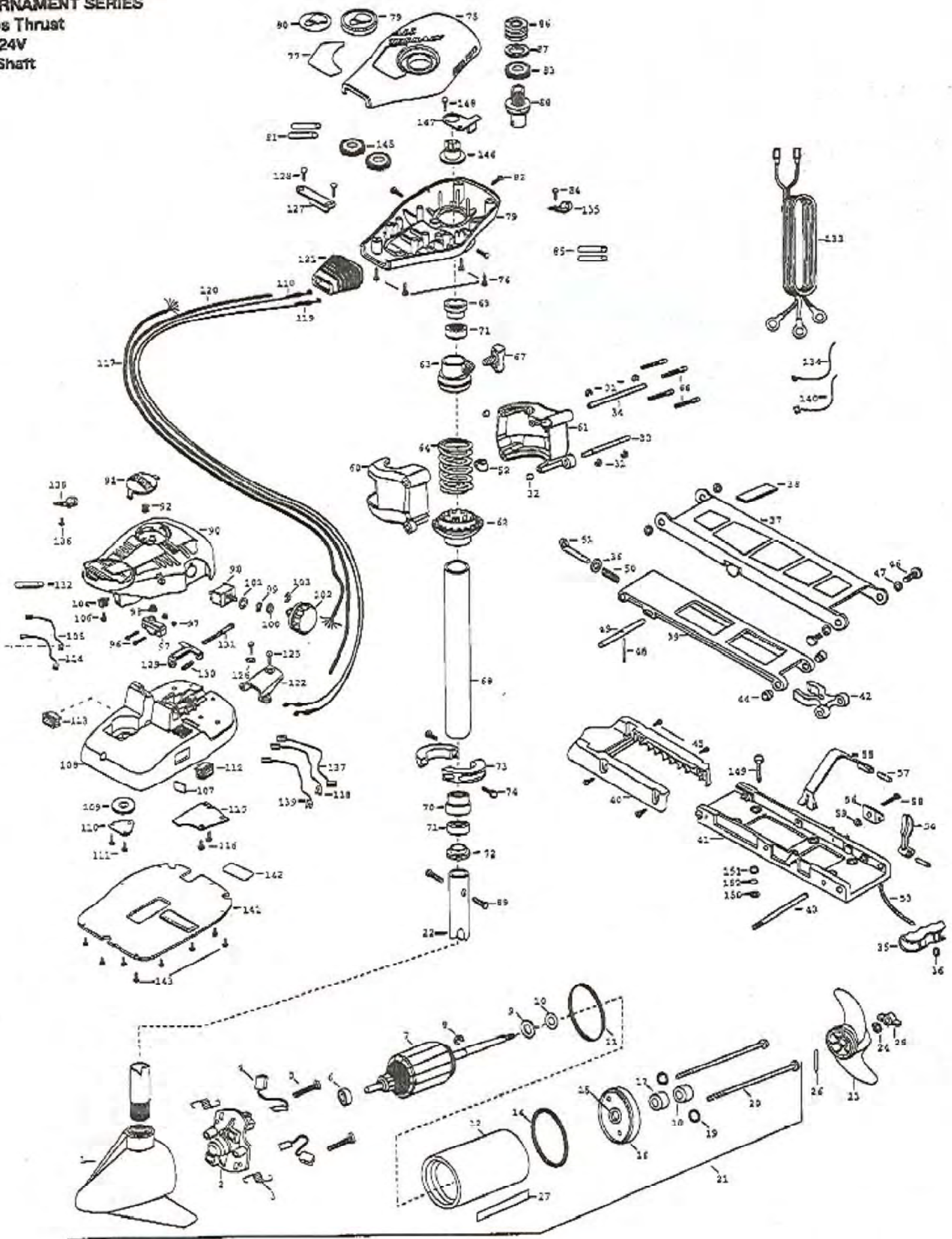


**CABELA'S 65AT**  
**TOURNAMENT SERIES**  
65 lbs Thrust  
12V/24V  
42" Shaft



1	2-100 C09	ARMATURE ASSEMBLY	53	2251600	ROPE - 31'	103	2263000	E-RING TRU-ARC
2	140-010	BEARING-BALL	54	2267200	LATCH LEVER	104	2260730	CONNECTOR 1/4 MALE TAB
3	788-015	RETAINING RING	55	2263800	STRAP-HOLD DOWN	105	2260315	CONNECTING WIRE-7-1/2"
4	431-005	CENTER HOUSING ASSEMBLY	56	2261910	BRACKET HOLD DOWN STRAP	106	2332103	SCREW-6-20 X 3/8 THD SS
5	2-300-C39	BRUSH END HOUSING SPDCO	57	2260500	PIN-ROLL LATCH LEVER [2 ea]	107	2268413	TENSION SCREW PLATE- FT PED
6	2-400-101	PLAIN END HOUSING	58	2263440	SCREW-10-24 X 3/4	108	2992101	FT PED BASE/PIN ASSEMBLY
7	144-049	BEARING- FLANGE SERVICE ONLY	59	2333101	NUT-FLEX 10-24 NYLOC	109	2262301	PULLEY FOOT PEDAL
8	890-000	SEAL	60	2261921	BRACKET BASE-LEFT	110	2266400	COVER-PULLEY STAMPING
9	890-006	SEAL-W/SHIELD	61	2261931	BRACKET BASE-RIGHT	111	2301310	SCREW-8-18 X 1/2 SS [2 ea]
10	189-036	BRUSH ASSEMBLY [2 ea]	62	2261535	SPRING SLEEVE, LOWER	112	2254031	SWITCH-MON/OFF/COM
11	725-059	TUBE- BRUSH RETENTION	63	2261525	SPRING-SLEEVE UPPER	113	2254032	SWITCH-12W/OFF/24V 65AT
12	738-038	BRUSH PLATE WITH HOLDER	64	2262706	SPRING, BOWGUARD, NIK PL	114	2260300	CONNECTING WIRE-14"
13	975-040	SPRING- TORSION [2 ea]	65	2267300	BUSHING-DOWEL [2 ea]	115	2266412	SWITCH PLATE, FT PEDAL
14	337-036	GASKET	66	2263470	SCREW-1/4-20 X 1-3/4 SS [4 ea]	116	2332103	SCREW-6-20 X 3/8 THD SS [2 ea]
15	701-008	O-RING THRU BOLT [2 ea]	67	2011385	SCREW-TENSION/NEW KNOB	117	2261208	WIRE HARNESS, A/T FT. PED
16	701-001	O-RING	68	2932015	TUBE W/BEARING RACE ASSEMBLY	118	2267500	CABLE ASSEMBLY-RIGHT 5'
17	830-007	#8-32 SCREW [2 ea]	68	2272085	TUBE OUTER-18' 4 HOLES	119	2267510	CABLE ASSEMBLY-LEFT 5'
18	830-008	THRU BOLT 10-32 X 9.205 [2 ea]	69	2266260	BEARING RACE	120	2265430	CABLE JACKET 6'
19	990-067	WASHER- STEEL THRUST	70	2266220	BEARING RACE-STEEL	121	2265110	BOOT-CONTROL BOX
20	990-070	WASHER-NYLATRON	71	2266000	BEARING BALL-STEEL [2 ea]	122	2265115	BOOT-FOOT PEDAL BASE
21	2098034	MOTOR ASSEMBLY 24V F/W 47.75 LDS	72	2266116	BEARING CONE	125	2372100	SCREW-8-18 X 5/8 THD [2 ea]
22	2032063	TUBE- COMP/W/CSK HOLE-42"	73	2261615	COLLAR HALF-ZINC-2 PER	126	2261714	WASHER-MAXXUM FT PDL [2 ea]
23	1378122	PROPELLER KIT	74	2263450	SCREW-10-24 X 7/8 [2 ea]	127	2261800	BRACKET-CONDUIT
24	2051700	LOCKWASHER-PROP MEDIUM	76	2260285	COVER-CTR BOX A/T	128	2301310	SCREW-8-18 X 1/2 [2 ea]
25	2053100	NUT-PROP MEDIUM	76	2372100	SCREW-8-18 X 5/8 THD SS [4 ea]	129	2263210	BRACKET-CONDUIT ADJUSTMENT
26	2092600	PIN-DRIVE 95-4HP'S	77	2265516	DECAL-COVER 65AT	130	2262720	SPRING-CONDUIT ADJUSTMENT
27	2006600	DECAL-LOWER UNIT, WHITE	78	2265606	DECAL- CABELA'S TOUR	131	2263462	SCREW-1/4-20 X 2 S/S PPH
31	2263010	E-RING 3/8 DIA. SHAFT [4 ea]	79	2260150	POINTER DISC TRANSLCNT RED	132	2335400	SHRINK TUBE-1/2 OD X 2
32	2293500	BUSHING-SHOULDER UPPER ARM [2 ea]	80	2265800	DECAL-INDICATOR	133	2090811	LEADWIRE 12/24V
33	2260530	HINGE PIN-LOWER SS	81	2375400	SHRINK TUBE-1/4 OD X 1-3/4 [2 ea]	134	2256300	TIE WRAP-5.5" BLACK
34	2260520	HINGE PIN-UPPER	82	2053414	SCREW-#8-32 X 1/2 TRI-LOBE [3 ea]	135	2263201	CLAMP WIRE HARNESS MICRO [2 ea]
35	2150400	PULL-GRIP	83	2267800	GEAR-INDICATOR	136	2332103	SCREW-6-20 X 3/8 THD SS
36	2151700	WASHER-EYE SHAFT .562 OD	84	2301310	SCREW-8-18 X 1/2	137	2260301	CONNECTING WIRE SWITCH
■	2991987	BOW MOUNT ASSEMBLY 50AT FW	85	2355410	SHRINK TUBE-3/8 OD X 2 [2 ea]	138	2260312	WIRE, BLK W/WHIT STRP 19 1/2"
37	2264221	ARM-UPPER STD FW	86	2232360	PULLEY-CABLE DRUM	139	2260322	WIRE, BLK W/BLUE STRP-12"
38	2265120	BUMPER- UPPER ARM	87	2261730	WASHER-NYLON A/T CON B	140	2256301	TIE WRAP-5.5" WHITE
39	2254345	ARM- LVR FW MCHD	88	2776204	TOP BEARING RACE /PINION DRIVE	141	2266411	BOTTOM PLATE A/T FOOT
40	2263900	MOTOR REST	89	2283410	SCREW-8-32 X 5/16 ZN PL [2 ea]	142	2365107	INSULATING PAD 2.3 X 3.2
41	2251942	BOW PLATE-D/C MCHD	90	2790002	FOOT PEDAL/PLUG ASSEMBLY AT	143	9953104	SCREW-8 X 1/2 S/S [3 ea]
42	2293801	TUBE LOCK-D	91	2263700	PUSH-BUTTON FOOT PEDAL	144	2282531	CONTROL BOX-PLASTIC
43	2260606	HINGE-PIN HEADLESS ZINC	92	2302732	SPRING-LOWER PEDAL SS	145	2267600	GEAR-INDICATOR [2 ea]
44	2236000	BEARING NYLINER- [2 ea]	94	2264020	SWITCH MOMENTARY	146	2262220	INDICATOR-DRIVE
45	2303431	SCREW 1/4-20 X 5/8 PPH [4 ea]	95	2265140	BOOT-MICROSWITCH	147	2261905	BRACKET/INDICATOR
46	2283511	BOLT-UPPER ARM W/LOCTITE [2 ea]	98	2262114	SCREW-MOUNTING/SWITCH [2 ea]	148	2301310	SCREW-8-18 X 1/2
47	2293500	BUSHING-SHOULDER UPPER ARM [2 ea]	97	2233100	NUT-SWITCH MOUNT [2 ea]	■	2994811	BAG ASSEMBLY-BOLTS,NUTS,WASHER
48	2152610	SPRING-PIN LOCKBAR	98	2264026	SWITCH-5 SPEED AT	149	2153501	BOLT-MOUNTING-3500 W/STGD [6 ea]
49	2233600	LOCK BAR- BOW MOUNT	99	2261701	LOCKWASHER -STAR	150	2153100	NUT-5/16-13NC MOUNTING [6 ea]
50	2152700	SPRING-LOCKBAR CAD. PLTD	100	2263105	NUT-FLEX	151	2301720	WASHER- MOUNTING RUBBER [6 ea]
51	2153600	EYE SHAFT-CAD. PLATE	101	2261715	SPACER-SWITCH 5 SP MODELS	152	2151726	WASHER-S/16 STD SS [6 ea]
52	2262310	GUIDE-ROPE	102	2260170	KNOB-SPEED CONTROL 5 SPD			

\* This item is part of an assembly. This item cannot be sold separately due to machining and/or assembly that is required.

# All Terrain Bowmount Series Wiring Diagrams

65AT

