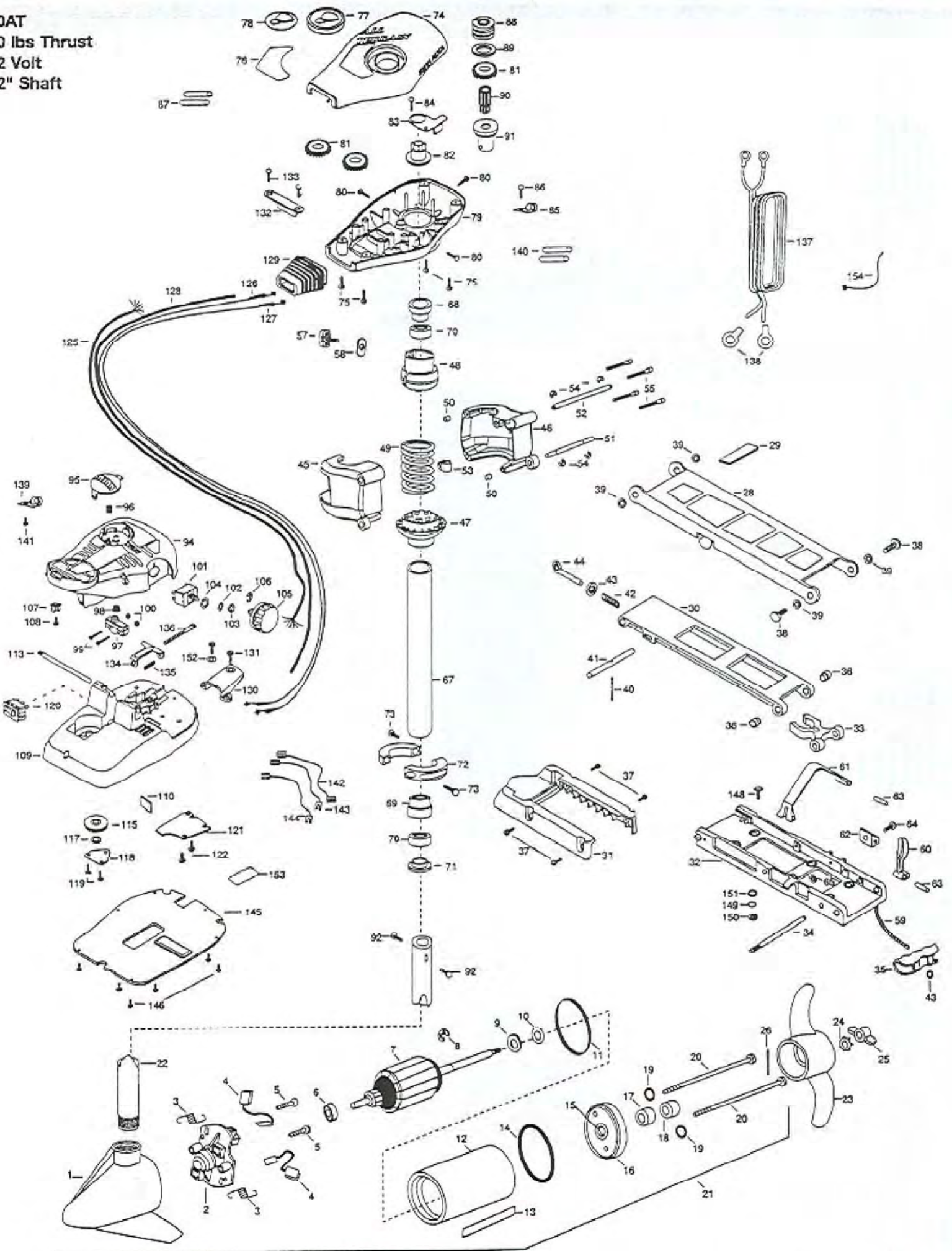


50AT
50 lbs Thrust
12 Volt
42" Shaft



1	2-300-196	BRUSH END HOUSING W/COIL	49	2262706	SPRING - BOWGUARD NIK PLT	98	2265140	BOOT - MICROSWITCH
2	738-036	BRUSH PLATE ASSY 3.5/8 DIA.	50	2267300	BUSHING - DOWEL [2. ea]	99	2262114	SCREW - MOUNTING/SWITCH [2 ea]
3	975-040	SPRING - BRUSH [2. ea]	51	2260530	HINGE PIN - LOWER	100	2233100	NUT - SWITCH MOUNT [2. ea]
4	188-036	BRUSH [2. ea]	52	2260520	HINGE PIN - UPPER	101	2264026	SWITCH - 5 SPEED
5	830-002	BRUSH PLATE SCREW [2. ea]	53	2262310	GUIDE - ROPE	102	2261701	LOCKWASHER - STAR
6	140-010	BALL BEARING	54	2263010	E RING 3/8 DIA. SHAFT [4. ea]	103	2263105	NUT - HEX
7	2-100-098	ARMATURE ASSEMBLY	55	2263470	SCREW - 1/4 - 20 X 1-3/4 [4. ea]	104	2261715	SPACER - SWITCH
8	788-015	E-RING - ARMATURE	■	2991944	BOWGUARD ASSEMBLY (INCL 45-50, 55, 57)	105	2260170	KNOB - SPEED CONTROL
9	990-067	WASHER - THRUST (STEEL)	57	2011385	SCREW - TENSION KNOB	106	2263000	E-RING
10	990-070	WASHER - NYLATRON THRUST	58	2263100	NUT - 1/4 - 20 INSERT	107	2260730	CONNECTOR 1/4 MALE TAB
11	337-036	GASKET	59	2251600	ROPE	108	2332103	SCREW - 6 - 20 X 3/8
12	2-200-101	CENTER HOUSING FIELD ASSEMBLY	60	2267200	LATCH LEVER	109	2774550	FOOT PEDAL BASE/PIN ASSEMBLY
13	2006603	DECAL LOWER UNIT WHITE	61	2263800	STRAP - HOLD DOWN	*110	2266413	TENSION SCREW - PLATE
14	701-081	O-RING	62	2261910	BRACKET HOLD DOWN STRAP	113	2260511	PIN - PIVOT
15	144-049	BEARING - (FLANGE, SERVICE ONLY)	63	2260500	PIN - ROLL LATCH LEVER [2. ea]	115	2262301	PULLEY (FOOT PEDAL)
16	2-400-101	PLAIN END HOUSING	64	2263440	SCREW - 10 - 24 X 3/4	117	2261705	WASHER - NYLATRON
17	880-003	SEAL	65	2333101	NUT - HEX	118	2266400	COVER - PULLEY
18	880-006	SEAL - W/CUP	■	2772015	TUBE W/BEARING RACE ASSEMBLY	119	2301310	SCREW - 8 - 18 X 1/2 [2. ea]
19	701-008	O-RING THRU BOLT [2. ea]	67	2272066	TUBE OUTER - 18"	120	2254031	SWITCH - MOM/OFF/COM
20	830-042	THRU BOLT [2. ea]	68	2266260	BEARING RACE - (5651)	121	2266412	SWITCH PLATE, FT PEDAL
21	2099030	MOTOR ASSEMBLY	69	2266220	BEARING RACE - STEEL	122	2332103	SCREW 6 - 20 X 3/8 [2. ea]
22	2032063	TUBE COMP W/CSK HOLE	70	2266000	BEARING - BALL [2. ea]	125	2261208	WIRE HARNESS A/T FT PEDAL
23	2091150	PROPELLER (W.WEDGE)	71	2266115	BEARING CONE	126	2267500	CABLE ASSEMBLY - RIGHT (5')
24	2051700	LOCKWASHER - PROP (MEDIUM)	72	2261615	COLLAR HALF [2. ea]	127	2267510	CABLE ASSEMBLY - LEFT (5')
25	2053100	NUT - PROP (MEDIUM)	73	2263450	SCREW - 10 - 24 X 7/8 [2. ea]	128	2265430	CABLE JACKET (5')
26	2092600	PIN - DRIVE	74	2260265	COVER - CTR BOX	129	2265110	BOOT - CONTROL BOX
■	2991987	BOWMOUNT ASSEMBLY FW 50AT	75	2372100	SCREW - 8 - 18 X 1/2 [4. ea]	130	2265115	BOOT - FOOT PEDAL BASE
28	2264221	ARM - UPPER FW/STD	76	2265519	DECAL - COVER 50AT	131	2372100	SCREW - 8 - 18 X 5/8 THD [2. ea]
29	2265120	BUMPER (UPPER ARM)	77	2260150	POINTER DISC TRNSLCNT RED	132	2261900	BRACKET - CONDUIT
■	2774304	LOWER ARM ASSEMBLY	78	2265800	DECAL - INDICATOR	133	2301310	SCREW - 8 - 18 X 1/2 [2. ea]
30	2254345	ARM - LWR FW	79	2262531	CONTROL BOX - PLASTIC	134	2263210	BRACKET - CONDUIT ADJUST
31	2263900	MOTOR REST	80	2262109	SCREW - 8 - 32 X 1/2 [3. ea]	135	2262720	SPRING - CONDUIT
32	2251942	BOW PLATE	81	2267800	GEAR - INDICATOR [3. ea]	136	2263460	SCREW - 1/4 - 20 X 2
33	2293801	TUBE LOCK	82	2262220	INDICATOR - DRIVE	137	2261225	LEADWIRE - BATTERY
34	2260506	HINGE - PIN (HEADLESS)	83	2261905	BRACKET - INDICATOR	138	2020700	TERMINAL RING, 3/8 [2. ea]
35	2150400	PULL - GRIP	84	2301310	SCREW - 8 - 18 X 1/2	139	2263201	CLAMP WIRE HARNESS MICO
36	2236000	BEARING NYLINER [2. ea]	85	2263201	CLAMP WIRE HARNESS MICRO	140	2375400	SHRINK TUBE 1/4 X 1-3/4 [2. ea]
37	2303431	SCREW 1/4 - 20 X 5/8 (4 REQ'D)	86	2301310	SCREW - 8 - 18 X 1/2	141	2332103	SCREW - 6 - 20 X 3/8
38	2293511	BOLT - UPPER ARM [2. ea]	87	2355410	SHRINK TUBE - 3/8 [2. ea]	142	2260301	CONNECTING WIRE (SWITCH)
39	2293500	BUSHING - SHOULDER (4 REQ'D)	88	2232360	PULLEY - CABLE DRUM	143	2260312	WIRE - BLKWHT 19 1/4"
40	2152610	SPRING - PIN (LOOKBAR)	89	2261730	WASHER - NYLON	144	2260322	WIRE - BLKBLU 12"
41	2233600	LOCK BAR - (BOW MOUNT)	■	2776204	BEARING RACE/ PINION ASSEMBLY	145	2266411	BOTTOM PLATE A/T FTPDL
42	2152700	SPRING - (LOOKBAR)	*90	2267805	PINION DRIVE	146	9953104	SCREW - 8 X 1/2 [8. ea]
43	2151700	WASHER - EYE SHAFT [2. ea]	*91	2268245	TOP BEARING RACE	147	2994811	BAG ASSY - (BOLTS, NUTS, WASHERS)
44	2153600	EYE SHAFT	92	2263410	SCREW - 8 - 32 X 5/16 [2. ea]	*148	2153501	BOLT - MOUNTING - [2. ea]
45	2261921	BRACKET BASE - LEFT	94	2790002	FOOT PEDAL/PLUG ASSEMBLY	*149	2151726	WASHER - 5/16 [6. ea]
46	2261931	BRACKET BASE - RIGHT	95	2263700	PUSH - BUTTON FOOT PEDAL	*150	2153100	NUT - 5/16 - MOUNTING [6. ea]
47	2261535	SPRING - SLEEVE LWR	96	2302732	SPRING - LOWER PEDAL	*151	2301720	WASHER - RUBBER [6. ea]
48	2261525	SPRING - SLEEVE UPPER	97	2264020	SWITCH MOMENTARY	152	2261714	WASHER - MAXXUM FT PDL [2. ea]
						154	2256300	TIE WRAP - 5.5"

* This item is part of an assembly. This item cannot be sold separately due to machining and /or assembly that is required.

