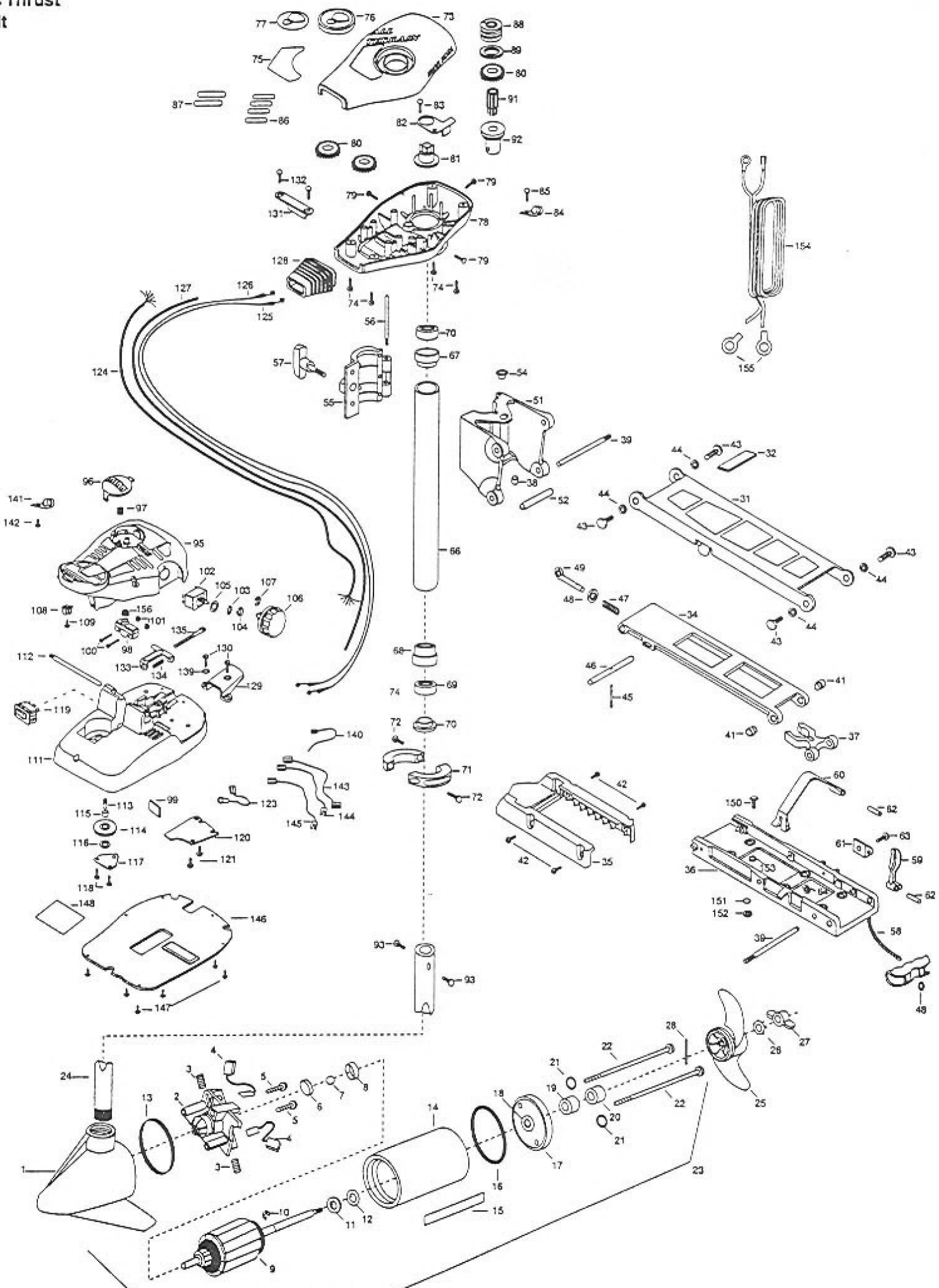


30AT
30 lbs Thrust
12 volt



In the U.S.A., replacement parts may be ordered directly from MINN KOTA Parts Dept.,
 JWA MARINE, 706 Hollister Ave, Mankato, Minnesota 56001. In Canada, parts may be
 ordered from any of the Indian Authorized Service Centers shown on the enclosed list.
 Be sure to provide the MODEL and SERIAL numbers of your motor when ordering parts.
 Please use the correct part numbers from the parts list. Payment for any parts ordered
 from the MINN KOTA parts department, may be by cash, personal check, Discover Card
 MasterCard or VISA. To order, call 1-800-227-6433 or FAX 1-800-527-4464.

Fuera de los Estados Unidos, consultar la
 lista anexa para ubicar el Centro de servicio
 autorizado MINN KOTA. No olvidar incluir el
 número del MODELO y el número de SERIE
 del motor para el cual se solicitan las piezas.
 Usar siempre los números de pieza correctos
 indicados en la lista de piezas.

Hors de États-Unis, voir la liste ci-jointe pour
 le Centre de Service Agréé MINN KOTA le
 plus proche. Lors d'une commande, ne pas
 oublier de fournir le numéro de modèle et le
 numéro de série du moteur. Toujours mention-
 ner le numéro de pièce exact figurant sur la
 liste des pièces de rechange.

Fora da América do Norte, queira consul-
 tar a lista anexa para identificar o Centro
 de Serviço Autorizado MINN KOTA. Não
 deixa de incluir o número do MODELO e
 o número de SÉRIE do seu motor ao
 pedir peças. Sempre use os números cor-
 retos das peças da lista de peças.

1	403025	BRUSH END HOUSING W/ COIL	56	2262640	PIN-HINGE DOOR	110	2992100	FT PEDAL BASE/PIN ASSEMBLY INCL 111, 113
2	406405	BRUSH PLATE ASSEMBLY	57	2260180	KNOB- HINGE COVER	*111	2264550	FOOT PEDAL BASE
3	406081	BRUSH SPRING (2 REQ'D)	58	2251600	ROPE- 31"	112	2260511	PIN- PIVOT FOOT PEDAL
4	406072	BRUSH ASSEMBLY (2 REQ'D)	59	2267200	LATCH LEVER	*113	2260515	PIN- PULLEY- AXLE
5	406341	BRUSH PLATE SCREW (2 REQ'D)	60	2263800	STRAP- HOLD DOWN	114	2262300	PULLEY- FOOT PEDAL
6	403050	THRUST DISK	61	2261910	BRACKET- HOLD DOWN STRAP	115	2260000	BEARING- PULLEY
7	403010	BALL- STEEL	62	2260500	PIN- ROLL LATCH LEVER (2 REQ'D)	116	2261705	WASHER- NYLATRON
8	406090	BRUSH HOLDER	63	2263440	SCREW- 10-24 X 3/4"	117	2266400	COVER- PULLEY
9	403207	ARMATURE ASSEMBLY	64	2333101	NUT- HEX	118	2301310	SCREW- 8-18 X 1/2" (2 REQ'D)
10	405300	E-RING	65	2992015	TUBE W/BEARING RACE ASSEMBLY 18"	119	2254031	SWITCH- MOM/OFF/CON
11	406170	THRUST WASHER- STEEL (AS REQ'D)	66	2272068	TUBE OUTER- 18" ORDER 68	120	2266412	SWITCH PLATE
12	405171	THRUST WASHER- NYLON (AS REQ'D)	67	2266260	BEARING- RACE	121	2332103	SCREW 6-20 X 3/8 (2 REQ'D)
13	403460	O-RING	68	2266220	BEARING- RACE STEEL	123	2260601	WIRE CONNECTING- 10GA.
14	403257	CENTER SECTION W/MAGNETS	69	2266000	BEARING BALL- STEEL (2 REQ'D)	124	2261208	WIRE HARNESS AT FT PDL
15	2006603	DECAL- LOWER UNIT WHITE	70	2266115	BEARING CONE	125	2267500	CABLE ASSEMBLY- RIGHT 5'
16	406460	O-RING	71	2261615	COLLAR (2 REQ'D)	126	2267510	CABLE ASSEMBLY- LEFT 5'
17	406033	PLAIN END HOUSING	72	2263450	SCREW- 10-24 X 7/8" (2 REQ'D)	127	2265430	CABLE JACKET 5'
18	406600	FLANGE BEARING (SERVICE ONLY)	73	2260264	COVER- CONTROL BOX	128	2265110	BOOT- CONTROL BOX
19	406461	SEAL	74	2372100	SCREW- 8-18 X 5/8" (4 REQ'D)	129	2265115	BOOT- FOOT PEDAL BASE
20	406471	SEAL- CUP	75	2265527	DECAL- COVER 30AT	130	2372100	SCREW- 8-18 X 1/2" (2 REQ'D)
21	401461	O-RING —THRU BOLT (2 REQ'D)	76	2260150	POINTER DISC TRANSLUCENT RED	131	2281900	BRACKET- CONDUIT
22	403354	THRU BOLT (2 REQ'D)	77	2265800	DECAL- INDICATOR	132	2301310	SCREW- 8-18 X 1/2" (2 REQ'D)
23	2069061	MOTOR-ASSEMBLY	78	2262531	CONTROL BOX	133	2263210	BRACKET- CONDUIT ADJUSTMENT
24	2032063	TUBE- COMPOSITE 42"	79	2262109	SCREW-8-32 X 1/2" (3 REQ'D)	134	2262720	SPRING- CONDUIT
25	2061125	PROP (WEEDLESS WEDGE)	80	2267800	GEAR- INDICATOR (3 REQ'D)	135	2263462	SCREW- 1/4-20 X 2"
26	2051700	LOCKWASHER-PROP	81	2262220	INDICATOR- DRIVE	139	2261714	WASHER- MAX FT PDL
27	2053100	NUT-PROP	82	2261905	BRACKET/INDICATOR	140	2266300	TIE WRAP- 5.5" BLACK
28	2092600	PIN-DRIVE	83	2301310	SCREW- 8-18 X 1/2"	141	2263201	CLAMP- WIRE HARNESS MICRO
30	2881954	STD- BOWMOUNT ASSEMBLY	84	2263201	CLAMP- WIRE HARNESS MICRO	142	2332103	SCREW- 6-20 X 3/8
31	2264221	ARM- UPPER STD FW	85	2301310	SCREW- 8-18 X 1/2"	143	2260301	CONNECTING WIRE- SWITCH
32	2265120	BUMPER- UPPER ARM	86	2375400	SHRINK TUBE- 1/4 OD X 1-3/4" (4 REQ'D)	144	2260312	WIRE- BLK/WHT 19-1/4
33	2774310	ARM- LOWER ASSEMBLY	87	2355410	SHRINK TUBE- 3/8 OD X 2" (2 REQ'D)	145	2260322	WIRE- BLK/BLU 12"
*34	2254342	ARM- LOWER — ORDER 33 -INCL 34, 40, 45, 46	88	2232360	PULLEY- CABLE DRUM	146	2266411	BOTTOM PLATE AT FOOT
35	2263900	MOTOR REST	89	2261730	WASHER- NYLON	147	9953104	SCREW- 8 X 1/2" (8 REQ'D)
36	2251942	BOW PLATE	90	2776203	TOP BEARING RACE ASSEMBLY INCLUDES 91, 92	148	2265606	DECAL
37	2293801	TUBE LOCK	*91	2267805	PINION DRIVE	149	2994803	BAG ASSEMBLY (INCLUDES 150-153)
*38	2264705	INSERT- HINGE BASE	*92	2266245	BEARING RACE- TOP	*150	2153501	BOLT-MOUNTING ORDER (4 REQ'D)
39	2260506	HINGE- PIN	93	2263410	SCREW- 8-32 X 5/16" (2 REQ'D)	*151	2151726	WASHER- 5/16" ORDER (4 REQ'D)
40	2150400	PULL- GRIP	94	2992020	FOOT PEDAL ASSEMBLY- 5 SPEED	*152	2153100	NUT- 5/16" MOUNTING (4 REQ'D)
41	2236000	BEARING NYLINER (2 REQ'D)	95	2790002	FOOT PEDAL- PLUG ASSEMBLY	*153	2301720	WASHER- RUBBER (6 REQ'D)
42	2303431	SCREW- 1/4-20 X 5/8" (4 REQ'D)	96	2263700	PUSH BUTTON- FOOT PEDAL	154	2261224	LEADWIRE- BATTERY
43	2293511	BOLT- UPPER ARM (4 REQ'D)	97	2302732	SPRING- LOWER PEDAL	155	2020700	RING TERMINALS (2 REQ'D)
44	2293500	BUSHING- SHOULDER UPPER ARM (4 REQ'D)	98	2264020	SWITCH- MOMENTARY	156	2265140	BOOT- MICROSWITCH
45	2152610	SPRING- PIN LOCKBAR	99	2266413	PLATE- TENSION SCREW			
46	2233600	LOCK BAR- BOW MOUNT	100	2262114	SCREW- MOUNTING SWITCH (2 REQ'D)			
47	2152700	SPRING- LOCKBAR	101	2233100	NUT- SWITCH MOUNT (2 REQ'D)			
48	2151700	WASHER- EYE SHAFT (2 REQ'D)	102	2264026	SWITCH- 5 SPEED			
49	2153600	EYE SHAFT	103	2261701	LOCKWASHER- STAR			
50	2771812	HINGE BASE ASSEMBLY- INCLUDES 38, 51, 54	104	2263105	NUT- HEX			
*51	2261811	HINGE BASE- ORDER 50	105	2261715	SPACER- SWITCH 5 SP MODELS			
52	2231570	SLEEVE ROLLER	106	2260170	KNOB- SPEED CONTROL 5 SPEED			
53	2230500	PIN-HINGE (BOW PLATE)	107	2263000	E-RING			
*54	2232350	EYELET-ROPE	108	2260730	CONNECTOR- 1/4 MALE			
55	2261821	HINGE DOOR	109	2332103	SCREW- 6-20 X 3/8"			

* This item is part of an assembly. This item cannot be sold separately due to machining and/or assembly that is required.

