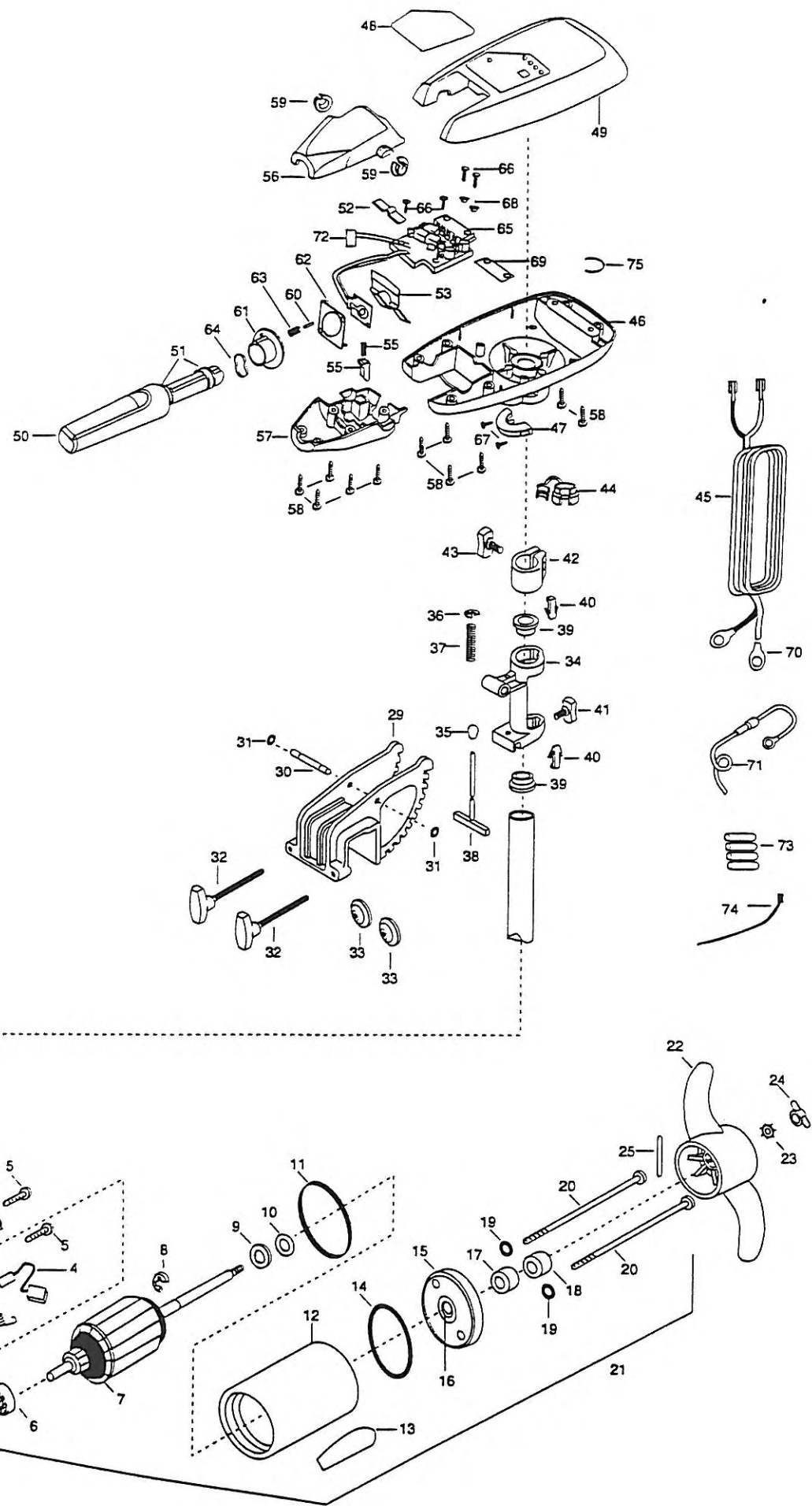


RT42/S
42 LBS. THRUST
12 VOLT
42" SHAFT



MINN KOTA, 700 Pine Lane, Mankato, Minnesota 56001. In Canada, parts may be ordered from any of the Canadian Authorized Service Centers shown on the enclosed list. Be sure to provide the MODEL and SERIAL numbers of your motor when ordering parts. Please use the correct part numbers from the parts list. Payment for any parts ordered from the MINN KOTA parts department, may be by cash, personal check, Discover Card MasterCard or VISA. To order, call 1-800-227-6433 or FAX 1-800-527-4464.

Para los Estados Unidos, consultar la lista anexa para ubicar el Centro de servicio autorizado MINN KOTA. No dejar de incluir el número del MODELO y el número de SERIE del motor para el cual se solicitan las piezas. Usar siempre los números de pieza correctos indicados en la lista de piezas.

Pour les États-Unis, voir la liste ci-jointe pour le Centre de Service Agréé MINN KOTA le plus proche. Lors d'une commande, ne pas oublier de fournir le numéro de modèle et le numéro de série du moteur. Toujours mentionner le numéro de pièce exact figurant sur la liste des pièces de rechange.

Para a América do Norte, queira consultar a lista anexa para identificar o Centro de Serviço Autorizado MINN KOTA. Não deixe de incluir o número do MODELO e o número de SÉRIE do motor ao pedir peças. Sempre use os números corretos das peças da lista de peças.

PARTS LIST

RT42/S

1	409022	BRUSH END HOUSING	39	2037300	BUSHING-HINGE (2 REQ'D)
2	406403	BRUSH PLATE ASSEMBLY	40	2032800	TENSION BLOCK-"SNAP IN" (2 REQ'D)
3	406082	BRUSH SPRING (2 REQ'D)	41	2011386	SCREW-TENSION W/NEW KNOB
4	406071	BRUSH ASSEMBLY (2 REQ'D)	42	2061520	COLLAR-DEPTH
5	406342	BRUSH PLATE SCREW (2 REQ'D)	43	2011366	SCREW-COLLAR/NEW KNOB (2 REQ'D)
6	406010	BALL BEARING	44	2332900	STRAIN RELIEF
7	406208	ARMATURE ASSEMBLY	45	2330600	LEADWIRE (10 GA) RINGS
8	405300	E-RING	46	2062584	CONTROL BOX
9	406170	THRUST WASHER- STEEL (AS REQ'D)	47	2061511	COLLAR-CTRL BOX
10	405171	THRUST WASHER- NYLON (AS REQ'D)	48	2305622	DECAL-COVER
11	406490	GASKET	49	2300227	COVER-CONTROL BOX
12	409254	CENTER SECTION W/MAGNETS	50	2990915	HANDLE ASSY W/O U-JOINT
13	2066649	DECAL MOTOR (2 REQ'D)	51	2060000	HANDLE BEARING (2 REQ'D)
14	406470	O-RING	52	2302742	SPRING-DETENT (OFF) SS
15	409032	PLAIN END HOUSING	53	2302743	SPRING-DETENT HANDLE-TILT
16	406600	FLANGE BEARING (SERVICE ONLY)	54	2302745	SPRING-RELEASE BUTTON SS
17	406461	SEAL	55	2303720	RELEASE BUTTON-HANDLE
18	406471	SEAL- CUP	56	2060411	HANDLE (TOP HALF)
19	405462	O-RING -THRU BOLT (2 REQ'D)	57	2060415	HANDLE (LOWER HALF)
20	406353	THRU BOLT (2 REQ'D)	58	2303412	SCREW-6-20X5/8 SELF TAP (11 REQ'D)
21	2099065	MOTOR ASSEMBLY	59	2060005	BEARING-HANDLE PIVOT (2 REQ'D)
22	2091150	PROP (WEEDLESS WEDGE)	60	2302600	PIN-ACTUATOR
23	2051700	LOCKWASHER-PROP	61	2302850	ACTUATOR-CAM
24	2053100	NUT-PROP	62	2302851	ACTUATOR-FWD/REV
25	2092600	PIN-DRIVE SS	63	2302740	SPRING-ACTUATOR
26	2032053	TUBE (COMPOSITE) 42"	64	2302741	SPRING-CAM
27	2991961	BRACKET & HINGE ASSEMBLY (INCLUDES 29-40)	65	2334007	CONTROL BOARD ASSEMBLY
28	2771905	BRACKET ASSEMBLY (INCLUDES 29, 32, 33)	66	2372100	SCREW-8-18X5/8 SS (4 REQ'D)
*29	2031903	BRACKET (ORDER 28)	67	2301310	SCREW-8-18X1/2 SS (2 REQ'D)
30	2330500	PIN- HINGE	68	2301710	WASHER-INSULATED-TRANSF.BAR (2 REQ'D)
31	2333100	NUT SPEED	69	2365105	INSULATING PAD
32	2011376	SCREW-CLAMP (2 REQ'D)	70	2090700	RING TERMINALS (2 REQ'D)
33	2331700	WASHER-CLAMP SCREW (2 REQ'D)	71	2060310	FUSED GROUND WIRE
34	2031855	HINGE	72	2305810	TAG- AIR SWITCH LEADS
35	2010100	KNOB-TILT	73	2305400	SHRINK TUBE 3/8X1 (6 REQ'D)
36	2333001	E-RING	74	2256300	TIE WRAP 5.5
37	2332700	SPRING-T-BAR	75	2303001	PIG RING
38	2033601	T-BAR			

* This item is part of an assembly. This item cannot be sold separately due to machining and /or assembly that is required.

RT42/S

