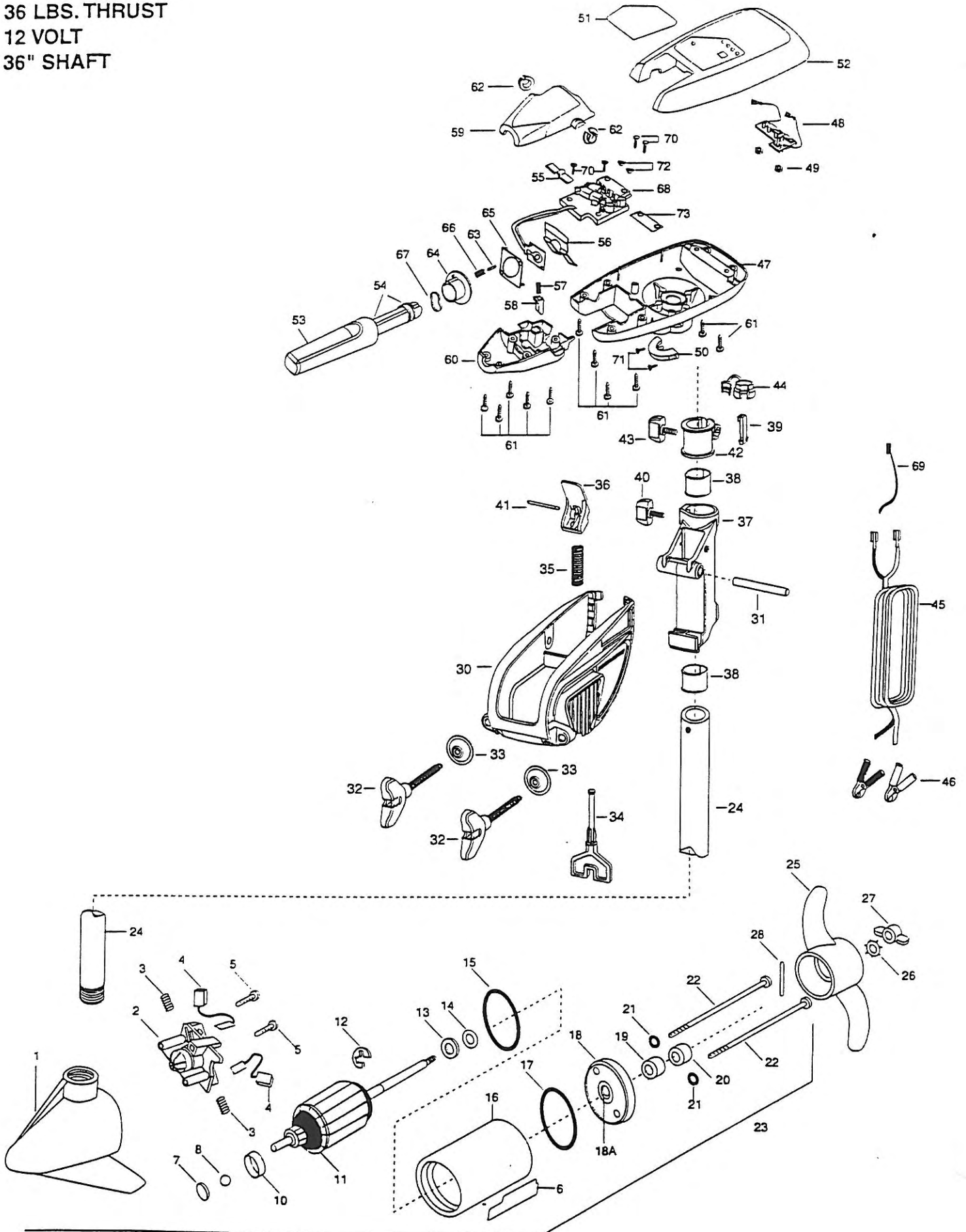


36T MAXXUM
36 LBS. THRUST
12 VOLT
36" SHAFT



JOHN DEERE, 708 Holly Lane, Mankato, Minnesota 56001. In Canada, parts may be ordered from any Canadian Authorized Service Centers shown on the enclosed list. Be sure to provide MODEL and SERIAL numbers of your motor when ordering parts. Please use the correct part numbers from the parts list. Payment for any parts ordered from the MINN KOTA parts department, may be by cash, personal check, Discover Card MasterCard or VISA. To order, call 1-800-227-6433 or FAX 1-800-527-4464.

Para los Estados Unidos, consultar la lista anexa para ubicar el Centro de servicio autorizado MINN KOTA. No dejar de incluir el número del MODELO y el número de SERIE del motor para el cual se solicitan las piezas. Usar siempre los números de pieza correctos indicados en la lista de piezas.

Hors de Etats-Unis, voir la liste ci-jointe pour le Centre de Service Agréé MINN KOTA le plus proche. Lors d'une commande, ne pas oublier de fournir le numéro de modèle et le numéro de série du moteur. Toujours mentionner le numéro de pièce exact figurant sur la liste des pièces de rechange.

Fora da América do Norte, queira consultar a lista anexa para identificar o Centro de Serviço Autorizado MINN KOTA mais próximo. Não deixe de incluir o número do modelo e o número de SÉRIE do seu motor ao pedir peças. Sempre use os números corretos das peças da lista de peças.

1	406029	BRUSH END HOUSING	29A	2771910	BRACKET & HINGE ASSEMBLY (INCLUDES- 30,32,33)	57	2302745	SPRING-RELEASE BUTTON SS
2	406405	BRUSH PLATE ASSEMBLY				58	2303720	RELEASE BUTTON-HANDLE
3	406081	BRUSH SPRING (2 REQ'D)	*30	2061910	BRACKET-ORDER 29A	59	2060409	HANDLE (TOP HALF)
4	406072	BRUSH ASSEMBLY	31	2060510	PIN-HINGE	60	2060415	HANDLE (LOWER HALF)
5	406341	BRUSH PLATE SCREW	32	2061300	SCREW-CLAMP (2 REQ'D)	61	2303412	SCREW-6-20 X 5/8 SELF TAP (11 REQ'D)
6	2006601	DECAL-LOWER UNIT	33	2011710	WASHER-CLAMP SCREW (2 REQ'D)	62	2060005	BEARING-HANDLE PIVOT (2 REQ'D)
7	403050	THRUST DISK	34	2063605	T-BAR, PLASTIC	63	2302600	PIN-ACTUATOR
8	403010	THRUST BALL	35	2062706	SPRING- (T-BAR)	64	2302850	ACTUATOR-CAM
10	406090	BRUSH HOLDER	36	2067200	LEVER-TILT (RED)	65	2302851	ACTUATOR-FWD/REV
11	405205	ARMATURE ASSEMBLY	37	2061810	HINGE-PLASTIC	66	2302740	SPRING-ACTUATOR
12	405300	E-RING	38	2037300	BUSHING-HINGE (2 REQ'D)	67	2302741	SPRING-CAM
13	406170	THRUST WASHER- STEEL (AS REQ'D)	39	2062800	TENSION BLOCK-SNAP IN	68	2064050	CONTROL BOARD ASSEMBLY
14	405171	THRUST WASHER- NYLON (AS REQ'D)	40	2011385	SCREW, TENSION/KNOB	69	2256300	TIE WRAP 5.5
15	403460	O-RING	41	2060515	PIN, TILT LEVER	70	2372100	SCREW-8-18 X 5/8 SS (4 REQ'D)
16	405259	CENTER SECTION W/MAGNETS	42	2061520	COLLAR-DEPTH (W/O INSERT)	71	2301310	SCREW-8-18 X 1/2 SS (2 REQ'D)
17	406460	O-RING	43	2011365	SCREW-COLLAR/NEW KNOB	72	2301710	WASHER-INSUL. (2 REQ'D)
18	406036	PLAIN END HOUSING	44	2052900	STRAIN RELIEF	73	2365105	INSULATING PAD
18A	406600	FLANGE BEARING (SERVICE ONLY)	45	2050600	LEADWIRE (10 GA) CLIPS			
19	406461	SEAL	46	2010700	BATTERY CLIPS (2 REQ'D)			
20	406471	SEAL- CUP	47	2062580	CONTROL BOX-DIE CAST ZINC			
21	401462	O-RING —THRU BOLT	48	2034035	BATTERY GAUGE-12 V./4 LED			
22	405352	THRU BOLT (2 REQ'D)	49	2303120	SPEED NUT (2 REQ'D)			
23	2069045	MOTOR ASSEMBLY	50	2061510	COLLAR-CTRL BOX			
24	2032052	TUBE (COMPOSITE) 36"	51	2065604	DECAL-COVER			
25	2061125	PROP (WEEDLESS WEDGE)	52	2990294	COVER-CONTROL BOX/DECAL ASS'Y			
26	2051700	LOCKWASHER-PROP	53	2990914	HANDLE ASSEMBLY W/O U-JOINT			
27	2053100	NUT-PROP	54	2060000	HANDLE BEARING (2 REQ'D)			
28	2092600	PIN-DRIVE SS	55	2302742	SPRING-DETENT (OFF) SS			
29	2991811	BRACKET & HINGE ASSEMBLY (INCLUDES- 29A—41)	56	2302743	SPRING-DETENT HANDLE-TILT			

36T Maxxum

PARTS LIST

* This item is part of an assembly. This item cannot be sold separately due to machining and /or assembly that is required.

Max 30T, 36T, 44T, & 44BT

