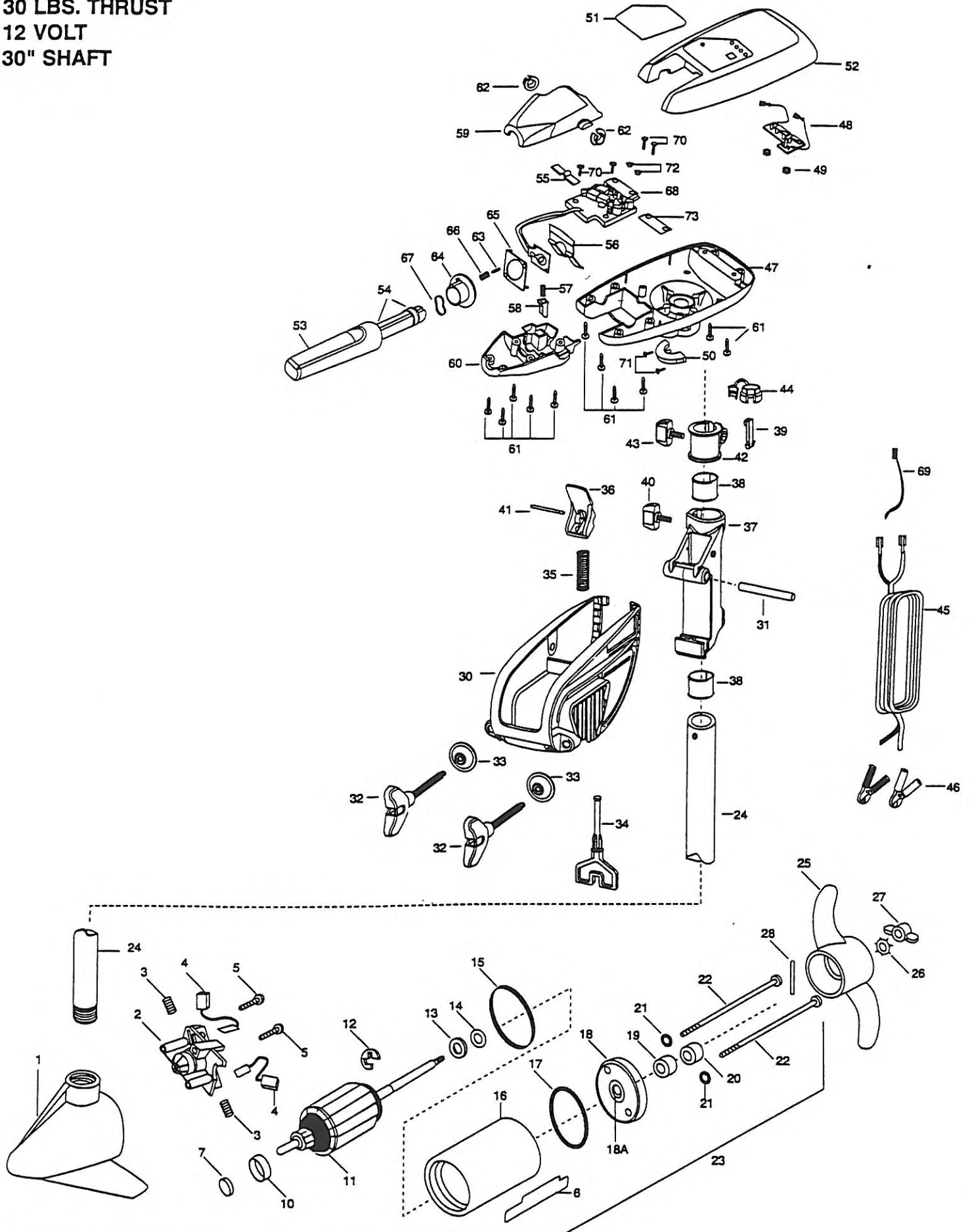


30T MAXXUM
30 LBS. THRUST
12 VOLT
30" SHAFT



ordered from any of the Canadian Authorized Service Centers shown on the enclosed list. Be sure to provide MODEL and SERIAL numbers of your motor when ordering parts. Please use the correct part numbers from the parts list. Payment for any parts ordered from the MINN KOTA parts department, may be by cash, personal check, Discover Card MasterCard or VISA. To order, call 1-800-227-6433 or FAX 1-800-527-4464.

lista anexa para ubicar el Centro de servicio autorizado MINN KOTA. No dejar de incluir el número del MODELO y el número de SERIE del motor para el cual se solicitan las piezas. Usar siempre los números de pieza correctos indicados en la lista de piezas.

le Centre de Service Agréé MINN KOTA le plus proche. Lors d'une commande, ne pas oublier de fournir le numéro de modèle et le numéro de série du moteur. Toujours mentionner le numéro de pièce exact figurant sur la liste des pièces de rechange.

para a lista anexa para identificar o Centro de Serviço Autorizado MINN KOTA. Não deixe de incluir o número do MODELO e o número de SÉRIE do motor ao pedir peças. Sempre use os números corretos das peças da lista de peças.

1	406022	BRUSH END HOUSING	29A	2771910	BRACKET & HINGE ASSEMBLY (INCLUDES- 30,32,33)	57	2302745	SPRING-RELEASE BUTTON SS
2	406402	BRUSH PLATE ASSEMBLY				58	2303720	RELEASE BUTTON-HANDLE
3	406081	BRUSH SPRING (2 REQ'D)	*30	2061910	BRACKET-ORDER 29A	59	2060409	HANDLE (TOP HALF)
4	406072	BRUSH ASSEMBLY	31	2060510	PIN-HINGE	60	2060415	HANDLE (LOWER HALF)
5	406341	BRUSH PLATE SCREW	32	2061300	SCREW-CLAMP (2 REQ'D)	61	2303412	SCREW-6-20 X 5/8 SELF TAP (11 REQ'D)
6	2006601	DECAL- LOWER UNIT	33	2011710	WASHER-CLAMP SCREW (2 REQ'D)	62	2060005	BEARING-HANDLE PIVOT (2 REQ'D)
7	401050	THRUST DISK	34	2063605	T-BAR, PLASTIC	63	2302600	PIN-ACTUATOR
10	406090	BRUSH HOLDER	35	2062706	SPRING- (T-BAR)	64	2302850	ACTUATOR-CAM
11	406206	ARMATURE ASSEMBLY	36	2067200	LEVER-TILT (RED)	65	2302851	ACTUATOR-FWD/REV
12	405300	E-RING	37	2061810	HINGE-PLASTIC	66	2302740	SPRING-ACTUATOR
13	406170	THRUST WASHER- STEEL (AS REQ'D)	38	2037300	BUSHING-HINGE (2 REQ'D)	67	2302741	SPRING-CAM
14	405171	THRUST WASHER- NYLON (AS REQ'D)	39	2062800	TENSION BLOCK-SNAP IN	68	2064050	CONTROL BOARD ASSEMBLY
15	406480	GASKET	40	2061310	SCREW, TENSION/KNOB	69	2256300	TIE WRAP 5.5
16	406255	CENTER SECTION W/MAGNETS	41	2060515	PIN, TILT LEVER	70	2372100	SCREW-8-18 X 5/8 SS (4 REQ'D)
17	406460	O-RING	42	2031520	COLLAR-DEPTH (W/O INSERT)	71	2301310	SCREW-8-18 X 1/2 SS (2 REQ'D)
18	406032	PLAIN END HOUSING	43	2011365	SCREW-COLLAR/NEW KNOB	72	2301710	WASHER-INSUL. (2REQ'D)
18A	406600	FLANGE BEARING (SERVICE ONLY)	44	2052900	STRAIN RELIEF	73	2365105	INSULATING PAD
19	406461	SEAL	45	2050600	LEADWIRE (10 GA) CLIPS			
20	406471	SEAL- CUP	46	2010700	BATTERY CLIPS (2 REQ'D)			
21	401462	O-RING —THRU BOLT	47	2062580	CONTROL BOX-DIE CAST ZINC			
22	406352	THRU BOLT (2 REQ'D)	48	2034035	BATTERY GAUGE-12 V./4 LED			
23	2369053	MOTOR ASSEMBLY	49	2303120	SPEED NUT (2 REQ'D)			
24	2032051	TUBE (COMPOSITE) 30"	50	2061510	COLLAR-CTRL BOX			
25	2061125	PROP (WEEDLESS WEDGE)	51	2365604	NR-DECAL-COVER 30T			
26	2051700	LOCKWASHER-PROP	52	2990294	COVER-CNTRL BOX/DECAL ASS'Y			
27	2053100	NUT-PROP	53	2990914	HANDLE ASSEMBLY W/O U-JOINT			
28	2092600	PIN-DRIVE SS	54	2060000	HANDLE BEARING (2 REQ'D)			
29	2991811	BRACKET & HINGE ASSEMBLY (INCLUDES- 29A—41)	55	2302742	SPRING-DETENT (OFF) SS			
			56	2302743	SPRING-DETENT HANDLE-TILT			

* This item is part of an assembly. This item cannot be sold separately due to machining and /or assembly that is required.

PARTS LIST

30T MAXXUM

Max 30T, 36T, 44T, & 44BT

