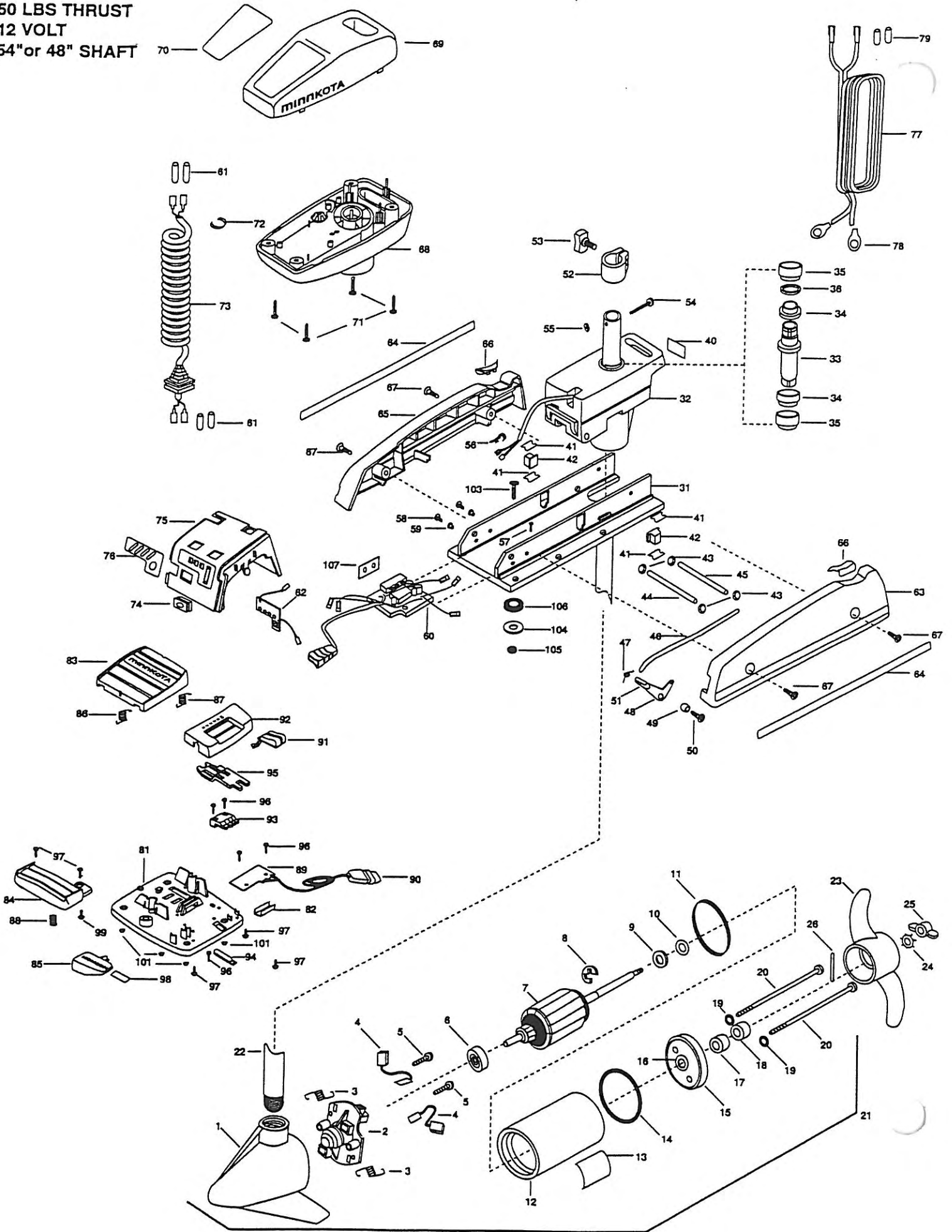


50PD  
50 LBS THRUST  
12 VOLT  
54" or 48" SHAFT



Order from any Canadian Authorized Service Centers shown on the enclosed list. Be sure to provide model and serial numbers of your motor when ordering parts. Please use the correct part numbers from the parts list. Payment for any parts ordered from the MINN KOTA parts department, may be by cash, personal check, Discover Card MasterCard or VISA. To order, call 1-800-227-6433 or FAX 1-800-527-4464.

lista anexa para ubicar el Centro de servicio autorizado MINN KOTA. No dejar de incluir el número del MODELO y el número de SERIE del motor para el cual se solicitan las piezas. Usar siempre los números de pieza correctos indicados en la lista de piezas.

le Centre de Service Agréé MINN KOTA le plus proche. Lors d'une commande, ne pas oublier de fournir le numéro de modèle et le numéro de série du moteur. Toujours mentionner le numéro de pièce exact figurant sur la liste des pièces de rechange.

para a lista anexa, queira consultar a lista anexa para identificar o Centro de Serviço Autorizado MINN KOTA. Não deixe de incluir o número do MODELO e o número de SÉRIE do motor ao pedir peças. Sempre use os números corretos das peças da lista de peças.

1	409023	BRUSH END HOUSING	*39	2307030	DRIVE HOUSING MOTOR ASSEMBLY	74	2302920	GROMMET-LEADWIRE
2	406403	BRUSH PLATE ASSEMBLY	40	2305519	DECAL-STEERING MOTOR	75	2306538	COVER-SPD CONTROL
3	406082	BRUSH SPRING (2 REQ'D)	41	2305110	PAD-PIVOT SUPPORT (4 REQ'D)	76	2306607	DECAL BATTERY GAUGE
4	406071	BRUSH ASSEMBLY (2 REQ'D)	42	2305101	PAD-PIVOT (2 REQ'D)	77	2090601	LEADWIRE 10GA 44" ASSEMBLY
5	406342	BRUSH PLATE SCREW (2 REQ'D)	43	2013100	NUT-SPEED (4 REQ'D)	78	2020700	RING TERMINAL (2 REQ'D)
6	406010	BALL BEARING	44	2300500	PIN-LATCH	79	2065400	WIRE INSULATOR-LARGE 1-3/4 (2 REQ'D)
7	406211	ARMATURE ASSEMBLY	45	2300510	PIN-PIVOT	80	2994700	FOOT PEDAL ASSY- (INCLUDES ITEMS 81-99)
8	405300	E-RING	46	2303610	ROD-RELEASE	81	2304511	FOOT PEDAL-BASE
9	406170	THRUST WASHER- STEEL	47	2302700	SPRING-RELEASE LEVER	82	2308500	WEAR PLATE
10	405171	THRUST WASHER- NYLATRON	48	2303710	LEVER-RELEASE	83	2304516	FOOT PEDAL-UPPER
11	406490	GASKET	49	2301700	SPACER-RELEASE LEVER	84	2304520	FOOT PEDAL-LOWER
12	406257	CENTER SECTION W/MAGNETS	50	2303430	SCREW- 1/4-20 X 5/8	85	2307210	LEVER MOM/CON
13	2006609	DECAL -MOTOR	51	2300101	RELEASE-KNOB	86	2302730	SPRING-LONG-UPPER PEDAL
14	406470	O-RING	52	2031521	COLLAR- DRIVE W/INSERT	87	2302731	SPRING-SHORT-UPPER PEDAL
15	406033	PLAIN END HOUSING	53	2011365	SCREW-COLLAR W/KNOB	88	2302732	SPRING-LOWER PEDAL
16	406600	FLANGE BEARING (SERVICE CENTER ONLY)	54	2033400	SCREW-10-24 X 1-3/4	89	2304012	CNTRL BRD ASSEMBLY FP (INCLUDES 90)
17	406461	SEAL	55	2013110	NUT-HEX	90	2300730	CONTROL CORD ASSEMBLY
18	406471	SEAL- CUP	56	2302935	STRAIN RELIEF-DRIVE HOUSING	91	2300120	KNOB-SPEED SELECTOR
19	405462	O-RING - THRU BOLT (2 REQ'D)	57	2332100	SCREW-8-32 X 3/8	92	2300121	HOUSING-SPEED SELECTOR
20	406353	THRU BOLT (2 REQ'D)	58	2332101	SCREW-8-32 X 1/2 (2 REQ'D)	93	2302840	ACTUATOR-BOARD
21	2099031	MOTOR ASSEMBLY	59	2301710	WASHER-INSUL. TRANSFER BAR (2 REQ'D)	94	2302841	ACTUATOR-MOM/CON
22	2032055	TUBE 54"	60	2304014	CNTRL BOARD ASSEMBLY (INCLUDES 107)	95	2302842	ACTUATOR-STEERING
	2032054	TUBE 48"	61	2305400	SHRINK TUBE-3/8 OD (4 REQ'D)	96	2302100	SCREW-6-20 X 1/2 (5 REQ'D)
23	2091150	PROPELLER (W.WEDGE)	62	2034037	BATTERY METER- ELECTRIC 12V	97	2372100	SCREW-8-18 X 5/8 (5 REQ'D)
24	2051700	LOCKWASHER-PROP	63	2993806	SIDEPLATE (LEFT) W/REST PAD	98	2266610	DECAL-ON / OFF SWITCH
25	2053100	NUT-PROP	64	2305560	DECAL SIDEPLATE (2 REQ'D)	99	2335130	BUMPER- ACTUATOR
26	2092600	PIN-DRIVE	65	2993906	SIDEPLATE (RIGHT) W/REST PAD	100	2994807	BAG ASSEMBLY- (RUBBER BUMPERS)
*30	2991935	BASE ASSEMBLY	66	2305150	REST PAD	*101	2305131	RUBBER BUMPER (4 REQ'D)
31	2301912	BASE MACHINED	67	2303430	SCREW-1/4-20 X 5/8 (4 REQ'D)	102	2994803	BAG ASSY- (BOLTS, NUTS, WASHERS)
32	2301834	DRIVE HOUSING	68	2302512	CONTROL BOX	*103	2153501	BOLT-MOUNTING- STGD (4 REQ'D)
33	2032001	DRIVE HOUSING SLEEVE	69	2300215	CONTROL BOX COVER	*104	2151726	WASHER-STANDARD 5/16 (4 REQ'D)
*34	2307302	BUSHING- INSIDE (2 REQ'D) ORDER 37	70	2315627	DECAL-COVER 50PD	*105	2153100	NUT-MOUNTING (4 REQ'D) (4 REQ'D)
*35	2307303	BUSHING- OUTSIDE (2 REQ'D) ORDER 37	71	2012100	SCREW-8-18 X 5/8 (4 REQ'D)	*106	2301720	WASHER-MOUNTING RUBBER (6 REQ'D)
*36	2304600	O-RING ORDER 37	72	2303006	PIG RING	*107	2305141	INSULATING PAD
37	2887301	BUSHING KIT (INCLUDES 34,35,36)	73	2301232	COIL CORD-W/STRAIN RELIEF 54"			
38	2302221	DRIVE HOUSING GEAR		2301231	COIL CORD-W/STRAIN RELIEF 48"			

\* This item is part of an assembly. This item cannot be sold separately due to machining and /or assembly that is required.

# 1999 Powerdrive Corded Series WIRING DIAGRAM

765, 40PD,  
& 44PD, 50PD

