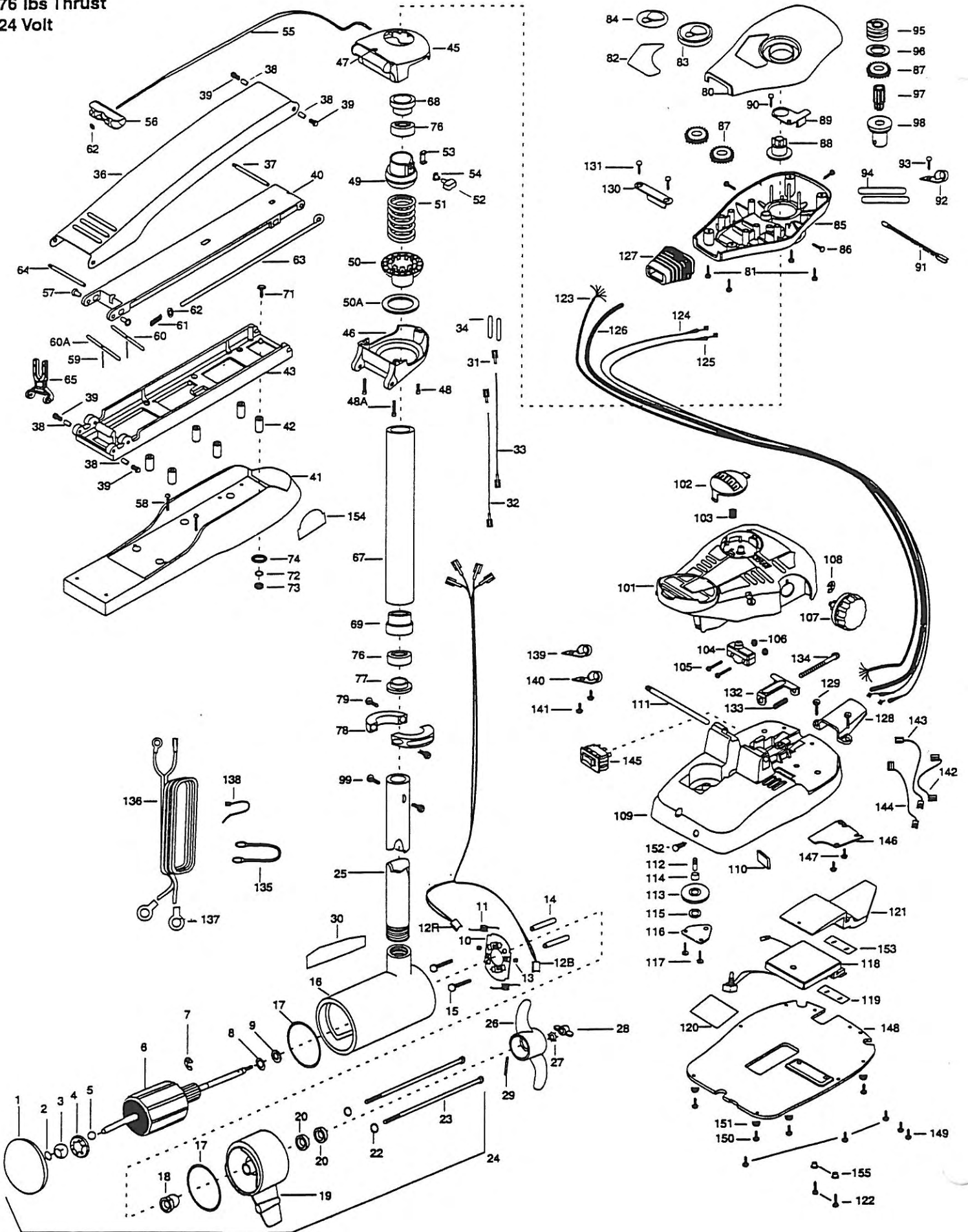


76 MAXXUM NAWA

76 lbs Thrust

24 Volt



In the U.S.A., replacement parts may be ordered directly from MINN KOTA Parts Dept., JWA North America, 1531 E. Madison Av Mankato, Minnesota 56001. In Canada, parts may be ordered from any of the Centers shown on the enclosed list. Be sure to provide the MODEL and SERIAL numbers of your machine and the MINN KOTA parts department, may be by cash, personal check, Discover Card MasterCard or VISA. To order, call 1-800-227-6433 or FAX 1-800-527-4464.

Hors de États-Unis, veuillez vous reporter à la liste ci-jointe pour le Centre de Service Agréé MINN KOTA le plus proche. Ne pas oublier de fournir les numéros de Modèle et de Série de votre Moteur lorsque vous placez une commande. Employez toujours le numéro de pièce exact se trouvant sur la list des pièces de remplacement.

Fora da América do Norte, queira consultar a lista anexa para identificar o Centro de Serviço Autorizado MINN KOTA. Não deixe de incluir o número do Modelo e do número de Série do seu motor ao pedir peças. Sempre use os números corretos das peças da lista de peças.

1	409024	PLAIN ENDBELL	52	2011385	SCREW-TENSION/NEW KNOB	103	2302732	SPRING-LOWER PEDAL
2	406050	THRUST DISC	*53	2262800	TENSION BLOCK -ALUMINUM	104	2264023	SWITCH-SEALED ASSEMBLY
3	409600	SPHERICAL BEARING	*54	2263100	NUT-1/4-20 INSERT	105	2262114	SCREW-MOUNTING/SWITCH (2 REQ'D)
4	409301	BEARING RETAINER	55	2251601	ROPE- 40"	106	2233100	NUT-SWITCH MOUNT (2 REQ'D)
5	405010	BALL-STEEL	56	2150400	PULL-GRIP	107	2260160	KNOB-SPEED CONTROL
6	410203	ARMATURE ASSEMBLY	57	2236000	BEARING NYLINER (2 REQ'D)	108	2263000	E-RING
7	409300	E-RING	58	2263434	SCREW-8-18 X 1 (2 REQ'D)	*109	2264550	FOOT PEDAL BASE ASSEMBLY (INCL. 109,110,112)
8	409170	THRUST WASHER- STEEL (AS REQ'D)	59	2152610	SPRING-PIN (LOCKBAR) (2 REQ'D)	*110	2266413	PLATE- TENSION SCREW
9	409171	THRUST WASHER- NYLON (AS REQ'D)	60	2233600	LOCK BAR- BOW MOUNT	111	2260511	PIN-PIVOT
10	409401	BRUSH PLATE ASSEMBLY	60A	2233602	LOCK BAR- REAR	*112	2260515	PIN-PULLEY-AXLE
11	406083	BRUSH SPRING (2 REQ'D)	61	2152700	SPRING-(LOCKBAR)	113	2262300	PULLEY (FOOT PEDAL)
12R	409078	BRUSH ASSEMBLY-RED 62"	62	2151700	WASHER-EYE SHAFT .562 OD	114	2260000	BEARING-PULLEY
12B	409077	BRUSH ASSEMBLY-BLK 62"	63	2153605	EYE SHAFT- LONG	115	2261705	WASHER-NYLATRON
13	409343	SET SCREW -BRUSH	64	2260506	HINGE-PIN, HEADLESS ZINC	116	2266400	COVER-PULLEY
14	405151	BRUSH PLATE SPACER (2 REQ'D)	65	2293810	YOKE, MAXXUM MOUNT	117	2301310	SCREW-8-18 X 1/2 (2 REQ'D)
15	405341	BRUSH PLATE SCREW (2 REQ'D)	66	2992014	TUBE W/BEARING RACE- 62" SHAFT	118	2264011	CONTROL BOARD ASSEMBLY
16	409257	CENTER SECTION W/MAGNETS	*67	2272068	TUBE OUTER 34" -ORDER 66	119	2365106	INSULATING PAD- 1.1 X 2.75
17	409460	O-RING (2 REQ'D)	68	2266260	BEARING RACE	120	2365107	INSULATING PAD- 2.3 X 3.2
18	409000	FLANGE BEARING (SERVICE ONLY)	69	2266220	BEARING RACE-STEEL	121	2264018	HEAT SINK, MAXXUM FT
19	409033	BRUSH END HOUSING	70	2994830	BAG ASSEMBLY-MAXXUM FW	122	2263434	SCREW-8-18 X 1 (2 REQ'D)
20	409481	SEAL (2 REQ'D)	*71	2263431	SCREW 1/4-20 X 3.5 (6 REQ'D)-ORDER 70	123	2261217	WIRE HARNESS
22	409482	O-RING -THRU BOLT (2 REQ'D)	*71A	2263435	SCREW 1/4-20 X 3.5 (2 REQ'D)-ORDER 70	124	2267500	CABLE ASSY-RIGHT (5')
23	409342	THRU BOLT (2 REQ'D)	*72	2261713	WASHER-1/4 FLAT (6 REQ'D)-ORDER 70	125	2267510	CABLE ASSY-LEFT (5')
24	2317033	MOTOR-ASSEMBLY 62"	*73	2263102	NUT-1/4-20 (6 REQ'D-ORDER 70)	126	2265430	CABLE JACKET (5')
25	2032066	TUBE- COMPOSITE 62"	*74	2301720	WASHER-MOUNTING, RUBBER (6 REQ'D)-ORDER 70	127	2265110	BOOT-CONTROL BOX
26	2331120	PROPELLER (W.WEDGE)	75	2266610	DECAL-ON/OFF SWITCH	128	2265115	BOOT-FOOT PEDAL BASE
27	2091700	LOCKWASHER-PROP	76	2266000	BEARING BALL-STEEL (2 REQ'D)	129	2262113	SCREW-8-18 X 1/2 FT.PDL (2 REQ'D)
28	2093100	NUT-PROP	77	2266115	BEARING CONE	130	2261900	BRACKET-CONDUIT
29	2092600	PIN-DRIVE	78	2771615	COLLAR HALVES KIT	131	2301310	SCREW-8-18 X 1/2 (2 REQ'D)
30	2006601	DECAL-LOWER UNIT	79	2263450	SCREW-10-24 X 7/8 (2 REQ'D)	132	2263210	BRACKET-CONDUIT ADJUSTMENT
31	2030710	CONNECTOR BUTT (2 REQ'D)	80	2260283	CONTROL BOX COVER-MAXXUM	133	2262720	SPRING-CONDUIT ADJUSTMENT
32	2030317	WIRE EXTENSION-18" -RED	81	2372100	SCREW-8-18 X 5/8 (4 REQ'D)	134	2263460	SCREW-1/4-20 X 2"
33	2030318	WIRE EXTENSION-18"-BLACK	82	2265536	DECAL COVER, MAXXUM 76	135	2340610	CONNECTOR CABLE-(12", 4GA)
34	2375400	SHRINK TUBE-1/40D X 1-3/4 (2 REQ'D)	83	2260150	POINTER DISC TRNSL CNT RED	136	2261227	LEADWIRE -VARIABLE
35	2991974	MOUNT, BOW ASSEMBLY- LONG	84	2265800	DECAL-INDICATOR	137	2020700	TERMINAL RING, 3/8" (2 REQ'D)
36	2264216	ARM UPPER-FW LONG	85	2262530	CONTROL BOX-PLASTIC	138	2256300	TIE WRAP-5.5" BLACK
37	2260507	HINGE PIN (THREADED)	86	2262109	SCREW-8-32 X 1/2 (3 REQ'D)	139	2263201	CLAMP WIRE HARNESS MICRO
38	2293501	BUSHING (4 REQ'D)	87	2267800	GEAR-INDICATOR (3 REQ'D)	140	2263200	CLAMP-WIRE HARNESS
39	2263500	BOLT, SHOULDER (4 REQ'D)	88	2262220	INDICATOR-DRIVE	141	2332103	SCREW-6-20 X 3/8 (2 REQ'D)
40	2774312	ARM-LOWER FW LONG	89	2261905	BRACKET/INDICATOR	142	2260316	CONNECTING WIRE (VAR.SPD)
41	2999265	MOTOR REST ASSEMBLY LONG	90	2301310	SCREW-8-18 X 1/2	143	2260311	CONNECTING WIRE 19 1/4"
42	2261505	SPACER, MOTOR REST (6 REQ'D)	91	2264015	LIGHT/INDICATOR	144	2260321	CONNECTING WIRE-VARIABLE
43	2251972	BOW PLATE, LONG	92	2263201	CLAMP WIRE HARNESS	145	2254031	SWITCH-MOM/OFF/COM
44	2271935	BRACKET ASSEMBLY (INCL 45-54)	93	2301310	SCREW-8-18 X 1/2	146	2266412	SWITCH PLATE, FT PEDAL
*45	2261937	BRACKET BASE-TOP	94	2355410	SHRINK TUBE-3/8 OD X 2" (2 REQ'D)	147	2332103	SCREW-6-20 X 3/8 (2 REQ'D)
*46	2262040	BRACKET BASE BOTTOM	95	2232360	PULLEY-CABLE DRUM	148	2264510	BOTTOM PLATE, MAXXUM
*47	2232351	EYELET-ROPE	96	2261730	WASHER-NYLON	149	2303412	SCREW-8-20 X 5/8 (5 REQ'D)
*48	2263402	SCREW 1/4-20 X 3/4	*97	2267805	PINION DRIVE	150	2263455	SCREW #12-14X1/2 (4 REQ'D)
*48A	2263420	BOLT 1/4-20 X 2 (2 REQ'D)	*98	2266246	TOP BEARING RACE	151	2265126	BUMBER PAD, FOOT PEDAL (4 REQ'D)
*49	2261520	SPRING-SLEEVE UPPER	99	2263410	SCREW-8-32 X 5/16 (2 REQ'D)	152	2262651	PUSH PIN
*50	2261533	SPRING SLEEVE LWR	100	2992023	FOOT PEDAL ASSEMBLY	153	2265105	INSULATING PAD
*50A	2261531	BEARING- BOWGUARD	101	2790002	FOOT PEDAL/PLUG ASSEMBLY	154	2265602	DECAL- NAWA
*51	2262702	SPRING, BOWGUARD, NIK PL	102	2263700	PUSH-BUTTON, FOOT PEDAL	155	2261712	SHOULDR WASHER (2 REQ'D)

PARTS LIST

76 MAXXUM

* This item is part of an assembly. This item cannot be sold separately due to machining and /or assembly that is required.

1999 Maxxum Series (foot-control) WIRING DIAGRAM

Max 54, Max 74,
& Max 76

