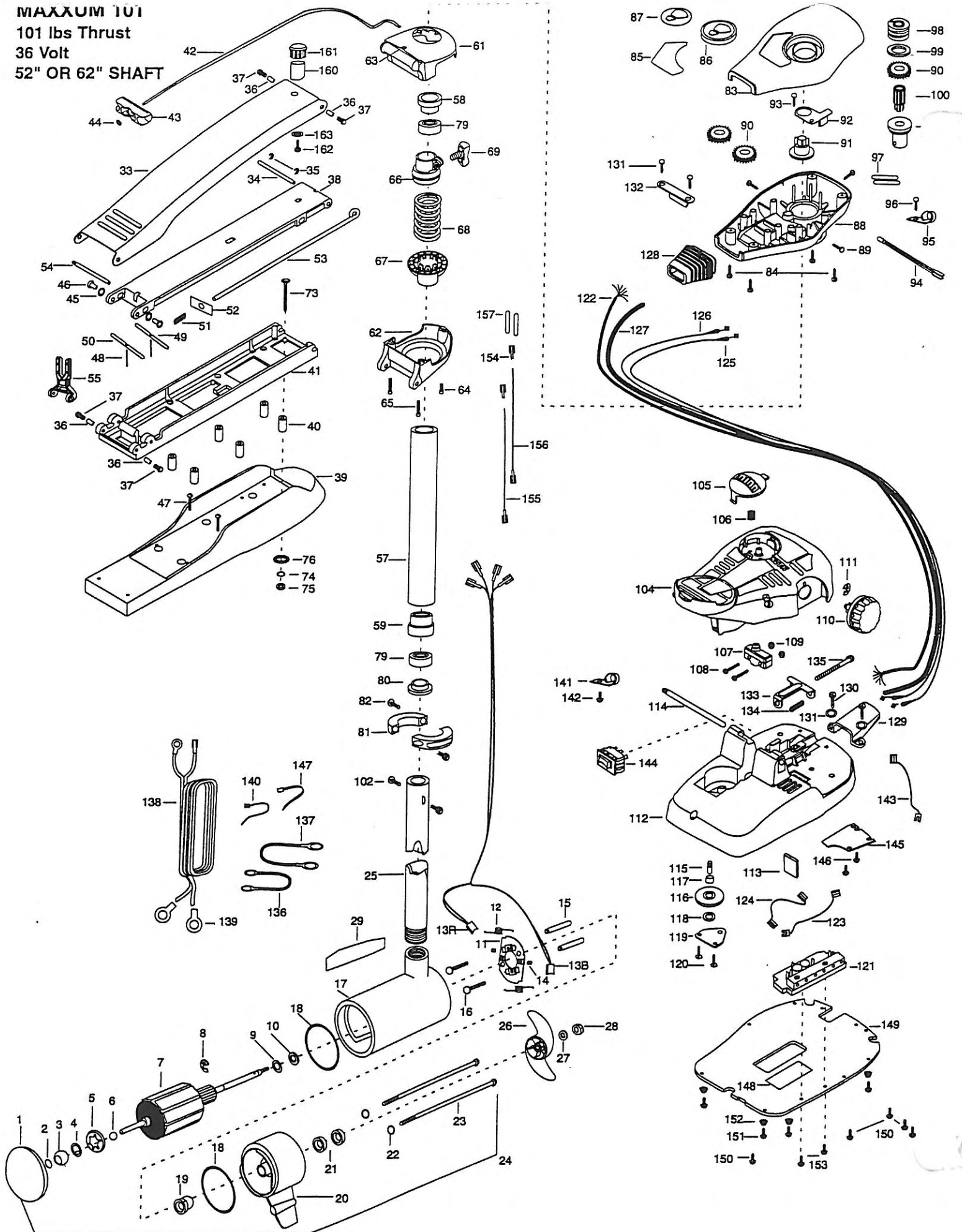


**MAXXUM 101**

**101 lbs Thrust**

**36 Volt**

**52" OR 62" SHAFT**



In the U.S.A., repl... parts may be ordered directly from MINN KOTA Parts Dept., Lane, Mankato, Minnesota 56001. In Canada, parts may be ordered from any Canadian Authorized Service Centers shown on the enclosed list. Be sure to provide MODEL and SERIAL numbers of your motor when ordering parts. Please use the correct part numbers from the parts list. Payment for any parts ordered from the MINN KOTA parts department, may be by cash, personal check, Discover Card MasterCard or VISA. To order, call 1-800-227-6433 or FAX 1-800-527-4464.

Fuera de los Estados Unidos, consultar la lista anexa para ubicar el Centro de servicio autorizado MINN KOTA. No dejar de incluir el número del MODELO y el número de SERIE del motor para el cual se solicitan las piezas. Usar siempre los números de pieza correctos indicados en la lista de piezas.

Hors de États-Unis, voir la liste ci-jointe pour le Centre de Service Agréé MINN KOTA le plus proche. Lors d'une commande, ne pas oublier de fournir le numéro de modèle et le numéro de série du moteur. Toujours mentionner le numéro de pièce exact figurant sur la liste des pièces de rechange.

Fora da América do N... a lista anexa para Ider... Centro de Serviço Autorizado MIN... A. Não deixe de incluir o número do MODELO e o número de SÉRIE do seu motor ao pedir peças. Sempre use os números corretos das peças da lista de peças.

1	2400160	PLAIN END HOUSING ASSEMBLY	55	2293811	YOKE, MAXXUM MOUNT	111	2263000	E-RING TRU-ARC#5133-43
2	303043	THRUST DISC- METAL	56	2992016	TUBE W/BEARING RACE ASSEMBLY 52"	112	2264550	FOOT PEDAL BASE
3	144021	BEARING -SPHERICAL		2992014	TUBE W/BEARING RACE ASSEMBLY 62"	*113	2266413	TENSION SCREW PLATE FT
4	991040	WASHER FELT		*57 2272067	TUBE OUTER -24" 4 HOLES 52" (ORDER 56)	114	2260511	PIN-PIVOT A/T FT PDL
5	784025	BEARING RETAINER		2272068	TUBE OUTER -34" 4 HOLES 62" (ORDER 56)	115	2260515	PIN-PULLEY-AXLE
6	116025	BALL -STEEL	58	2266260	BEARING RACE-(565T)	116	2262300	PULLEY (FOOT PEDAL)
7	2100110	ARMATURE ASSEMBLY	59	2266220	BEARING RACE -STEEL	117	2260000	BEARING -PULLER
8	788040	RETAINING RING	60	2991988	BG ASSEMBLY -FT CTRL, XL, MAX101	118	2261705	WASHER -NYLATRON A/T
9	990051	WASHER-THRUST, STEEL	*61	2991992	BRACKET BASE TOP/INSERT ASSEMBLY	119	2266400	COVER -PULLEY (STAMPING)
10	990052	WASHER- NYLATRON	*62	2991993	BRACKET BOTTOM/BEARING ASSEMBLY	120	2301310	SCREW -8-18 X 1/2" SS (2 REQ'D)
11	2600016	BRUSH PLATE ASSEMBLY	*63	2232351	EYELET -ROPE	121	2264012	CONTROL BOARD ASSEMBLY
12	975041	SPRING -TORSION (2 REQ'D)	64	2263402	SCREW 1/4-20 X 3/4"	122	2261218	WIRE HARNESS (MAX 101)
13R	409071	BRUSH W/RED LEADWIRE	65	2263420	BOLT, 1/4-20 X 2" (2 REQ'D)	123	2260325	WIRE, BLK W/GRN STRIPE 11 1/4"
13B	409072	BRUSH W/BLK LEADWIRE	66	2261525	SPRING -SLEEVE UPPER	124	2260326	WIRE, RED W/YEL STRIPE 16 1/2"
14	830028	SCREW 10-32 X .164"	67	2261535	SPRING SLEEVE, LOWER	125	2267500	CABLE ASSEMBLY-RIGHT (5')
15	973025	SPACER -BRUSH PLATE (2 REQ'D)	68	2262706	SPRING, BOWGUARD, NIK	126	2267510	CABLE ASSEMBLY-LEFT (5')
16	830027	SCREW -SELF TREADED 10-32 X 2" (2 REQ'D)	69	2011365	SCREW -TENSION/NEW KNOB	127	2265430	CABLE JACKET (5')
17	431110	HOUSING ASSEMBLY- CENTER	72	2994830	BAG ASSEMBLY-MAXXUM	128	2265110	BOOT -CONTROL BOX
18	701043	O-RING ( 2 REQ'D)	*73	2263431	SCREW 1/4-20 X 3.5" PPH (6 REQ'D)	129	2265115	BOOT -FOOT PEDAL BASE
19	144017	BEARING -FLANGE (SERVICE ONLY)	*74	2261713	WASHER-1/4" FLAT S/S (6 REQ'D)	130	2372100	SCREW-8-18 X 5/8",THDT (2 REQ'D)
20	2300160	BRUSH END HOUSING ASSEMBLY	*75	2263103	NUT 1/4-20 NYLOCK JAM S/S (6 REQ'D)	131	2281714	WASHER -MAXXUM FT PDL (2 REQ'D)
21	880025	SEAL (2 REQ'D)	*76	2301720	WASHER -MOUNTING*RUBBER (6 REQ'D)	132	2261900	BRACKET-CONDUIT
22	701009	O-RING -THRU BOLT (2 REQ'D)	78	2266610	DECAL -ON/OFF SWITCH	133	2263210	BRACKET -CONDUIT ADJUST
23	830096	THRU BOLT 12-24 X 11.56" SS (2 REQ'D)	79	2266000	BEARING, BALL -STEEL (2 REQ'D)	134	2262720	SPRING -CONDUIT ADJUST
24	2317051	MOTOR ASSEMBLY	80	2266115	BEARING CONE	135	2263460	SCREW -1/4-20 X 2"
25	2032067	TUBE (COMP) W/CSK HOLE 52"	81	2261615	COLLAR HALF -ZINC -2 PER	136	2340610	CONNECTOR CABLE- 12"
26	2032066	TUBE (COMP) W/CSK HOLE 62"	82	2263450	SCREW -10-24 X 7/8" (2 REQ'D)	137	2340612	CONNECTOR CABLE-48" (2 REQ'D)
27	2331130	PROPELLER (W.WEDGE)	83	2260283	CONTROL BOX COVER-MAXX	138	2261227	LEADWIRE (A/T VARIABLE)
28	2091701	WASHER-PROP (LARGE) MAX101	84	2372100	SCREW -8-18 X 5/8" THDT (4 REQ'D)	139	2020700	TERMINAL RING, 3/8" (2 REQ'D)
29	2093101	NUT-PROP (LARGE) MAX101	85	2265539	DECAL COVER, MAXXUM 101	140	2266300	TIE WRAP -5.5" BLACK
30	2006601	DECAL -LOWER UNIT	86	2260150	POINTER DISC TRNSLCNT	141	2263201	CLAMP WIRE HARNESS MICRO
31	2991997	MOUNT, BOW ASY, FW LG 52"	87	2265800	DECAL -INDICATOR	142	2332103	SCREW-6-20 X 3/8" THD
32	2991998	MOUNT, BOW ASY, FW LG 62"	88	2262531	CONTROL BOX-PLASTIC	143	2260312	WIRE, BLK W/WHT STRIPE 19 1/4"
33	2264216	ARM -UPPER FW 52" LONG	89	2262109	SCREW -8-32 X 1/2" THD CUT (3 REQ'D)	144	2254031	SWITCH -MOM/OFF/COM
34	2260513	HINGE PIN (MAX,A/T)	90	2267800	GEAR -INDICATOR (3 REQ'D)	145	2266412	SWITCH PLATE, FT PEDAL
35	2263010	E-RING 3/8" DIA. SHAFT (2 REQ'D)	91	2262220	INDICATOR -DRIVE	146	2332103	SCREW -6-20 X 3/8" THD (2 REQ'D)
36	2293501	BUSHING, STAINLESS STEEL (4 REQ'D)	92	2261905	BRACKET/INDICATOR	147	2266301	TIE WRAP -5.5' WHITE (2 REQ'D)
37	2263500	BOLT, SHOULDER (4 REQ'D)	93	2301310	SCREW -8-18 X 1/2" SS	148	2365109	INSULATING PAD (2.4 X 4.7")
38	<del>2094216</del>	ARM -LOWER ASSEMBLY, LG, FW, EXTRUD	94	2264015	LIGHT/INDICATOR	149	2264511	BOTTOM PLATE, MAX 101
39	2999271	MOTOR REST ASSEMBLY, LG, FW	95	2263201	CLAMP WIRE HARNESS MICRO	150	9953104	SCREW -8 X 1/2" SS (5 REQ'D)
40	2261505	SPACER, MOTOR REST (6 REQ'D)	96	2301310	SCREW -8-18 X 1/2" SS	151	2263455	SCREW 12-14 X 1/2" THR FRM (4 REQ'D)
41	2251972	BOWPLATE, LG FW W/INSERT ASSEMBLY	97	2355410	SHRINK TUBE-3/8 OD X 2" (2 REQ'D)	152	2265126	BUMPER PAD, FOOT PEDAL (4 REQ'D)
42	2251601	ROPE (40"), MAXXUM	98	2232360	PULLEY -CABLE DRUM	153	2332106	SCREW-8-32 X 1/2",TRI-LOBE (2 REQ'D)
43	2150400	PULL -GRIP	99	2261730	WASHER -NYLON A/T	154	2030710	CONNECTOR BUTT (2 REQ'D) (62" ONLY)
44	2151700	WASHER-EYE SHAFT(.562" )	100	2267805	PINION DRIVE (ZINC PLATE)	155	2030317	WIRE EXTENSION 18" RED (62" ONLY)
45	2261707	WASHER -3/8 X 1/2 X.016" (2 REQ'D)	101	2266246	TOP BEARING RACE )	156	2030316	WIRE EXTENSION 18" BLACK (62" ONLY)
46	2236000	BEARING NYLINER (2 REQ'D)	102	2263410	SCREW -8-32 X 5/16" (ZINC PLATE) (2 REQ'D)	157	2375400	SHRINK TUBE 1/4 X 1-3/4" (2 REQ'D) (62" ONLY)
47	2263434	SCREW, 8-18 X 1" PPH (2 REQ'D)	103	2992026	FOOT PEDAL ASSEMBLY MAX	158	2994832	BAG ASSEMBLY MAX101 62" (ITEMS 40 & 47)
48	2152610	SPRING-PIN (LOCKBAR) (2 REQ'D)	104	2790002	FOOT PEDAL/PLUG ASSEMBLY	159	2994833	BAG ASSEMBLY- MAXXUM STABILIZER
49	2233600	LOCK BAR -(BOW MOUNT)	105	2263700	PUSH -BUTTON FOOT PEDAL	*160	2268400	SHAFT- SUPPORT
50	2233602	LOCK BAR, REAR - ZINC	106	2302732	SPRING -LOWER PEDAL SS	*161	2268401	BUMPER- SHAFT
51	2152700	SPRING -(LOCKBAR)	107	2264023	SWITCH -SEALED ASSEMBLY	*162	2500001	SCREW 1/4-14 X 1" HHD SS
*52	2262703	SPRING STOP	108	2262114	SCREW-MOUNTING/SWITCH (2 REQ'D)	*163	2261713	WASHER 1/4 FLAT SS
53	2153605	EYE SHAFT -2 LOCKBAR LG SS	109	2233100	NUT-SWITCH MOUNT (2 REQ'D)			
54	2260506	HINGE-PIN (HEADLESS) ZINC	110	2260160	KNOB-SPEED CONTROL			

\* This item is part of an assembly. This item cannot be sold separately due to machining and /or assembly that is required.

PARTS LIST

MAX 101 - 52" & 62"

# Max 101

