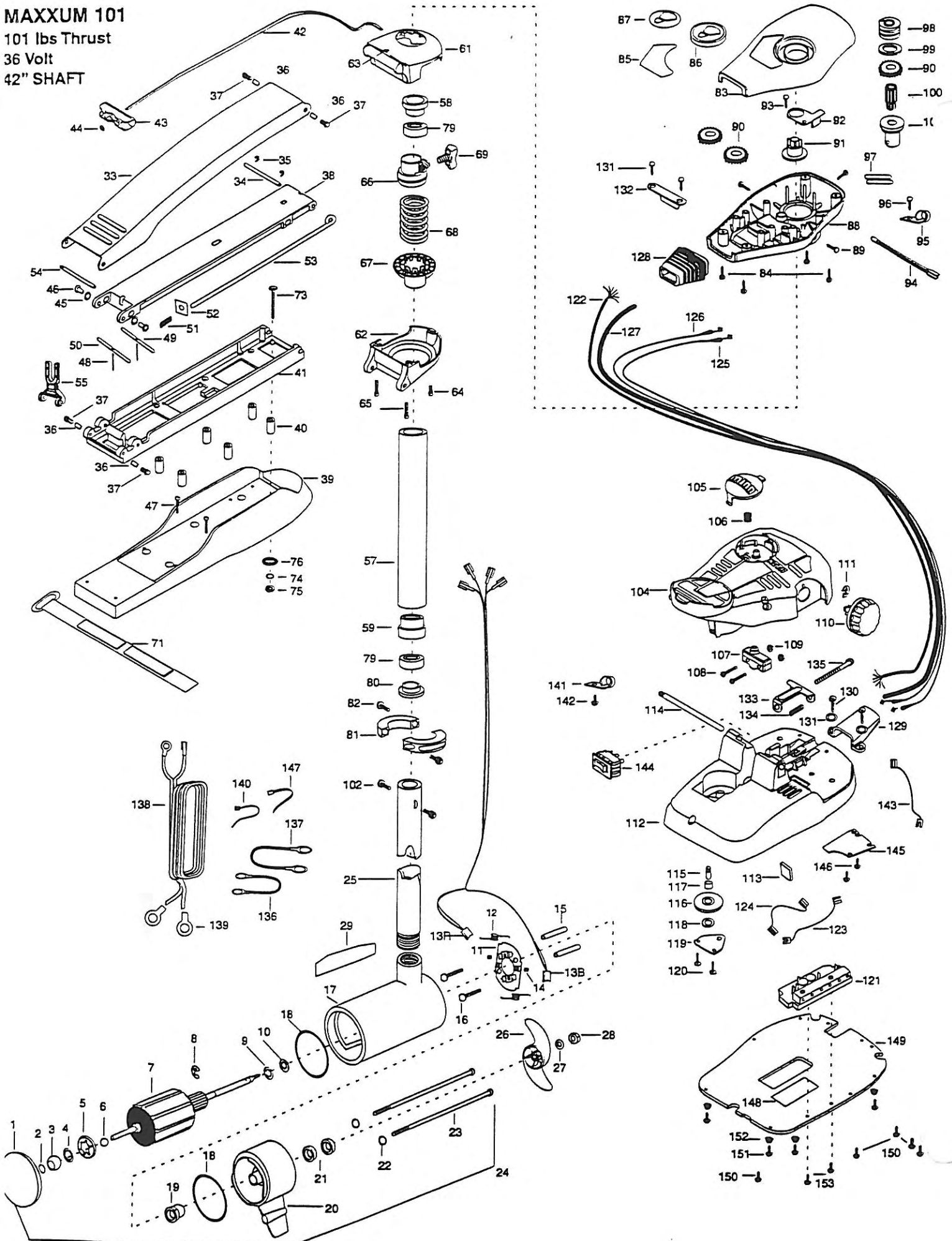


MAXXUM 101

101 lbs Thrust

36 Volt

42" SHAFT



In the U.S.A., repair parts may be ordered directly from MINN KOTA Parts Dept., JWA MARINE, 70 Lane, Mankato, Minnesota 56001. In Canada, parts may be ordered from any Canadian Authorized Service Centers shown on the enclosed list. Be sure to provide MODEL and SERIAL numbers of your motor when ordering parts. Please use the correct part numbers from the parts list. Payment for any parts ordered from the MINN KOTA parts department, may be by cash, personal check, Discover Card MasterCard or VISA. To order, call 1-800-227-6433 or FAX 1-800-527-4464.

Fuera de los Estados Unidos, consultar la lista anexa para ubicar el Centro de servicio autorizado MINN KOTA. No dejar de incluir el número del MODELO y el número de SERIE del motor para el cual se solicitan las piezas. Usar siempre los números de pieza correctos indicados en la lista de piezas.

Hors de États-Unis, voir la liste ci-jointe pour le Centre de Service Agréé MINN KOTA le plus proche. Lors d'une commande, ne pas oublier de fournir le numéro de modèle et le numéro de série du moteur. Toujours mentionner le numéro de pièce exact figurant sur la liste des pièces de rechange.

Fora da América do Norte, por favor consultar a lista anexa para identificar o Centro de Serviço Autorizado MINN KOTA mais próximo. Não deixe de incluir o número do modelo e o número de SÉRIE do seu motor ao pedir peças. Sempre use os números corretos das peças da lista de peças.

1	2400160	PLAIN END HOUSING ASSEMBLY	55	2293811	YOKE, MAXXUM MOUNT	109	2233100	NUT-SWITCH MOUNT (2 REQ'D)
2	303043	THRUST DISC	56	2992012	TUBE W/BEARING RACE ASSEMBLY	110	2260160	KNOB-SPEED CONTROL
3	144021	BEARING -SPHERICAL	*57	2272069	TUBE OUTER-21" 4 HOLES (ORDER 56)	111	2263000	E-RING TRU-ARC#5133-43
4	991040	FELT WASHER	58	2266260	BEARING RACE-(565T)	112	2264550	FOOT PEDAL BASE
5	784025	BEARING RETAINER	59	2266220	BEARING RACE-STEEL	*113	2266413	TENSION SCREW PLATE FT
6	116025	BALL-STEEL	60	2991989A	BG ASSEMBLY-FT CTRL, STD, MAX	114	2260511	PIN-PIVOT A/T FT PDL
7	2100110	ARMATURE ASSEMBLY	*61	2991992	BRACKET BASE TOP/INSERT	115	2260515	PIN-PULLEY-AXLE
8	788040	RETAINING RING	*62	2991993	BRACKET BOTTOM/BEARING ASSEMBLY	116	2262300	PULLEY (FOOT PEDAL)
9	990051	WASHER-THRUST, STEEL	*63	2232351	EYELET-ROPE	117	2260000	BEARING-PULLEY
10	990052	WASHER- NYLATRON	64	2263402	SCREW 1/4-20 X 3/4"	118	2261705	WASHER-NYLATRON A/T
11	2600016	BRUSH PLATE ASSEMBLY	65	2263420	BOLT, 1/4-20 X 2" (2 REQ'D)	119	2266400	COVER-PULLEY (STAMPING)
12	975041	SPRING -TORSION (2 REQ'D)	66	2261525	SPRING-SLEEVE UPPER	120	2301310	SCREW-8-18 X 1/2" SS (2 REQ'D)
13R	409071	BRUSH W/RED LEADWIRE	67	2261535	SPRING SLEEVE, LOWER	121	2264012	CONTROL BOARD ASSEMBLY
13B	409072	BRUSH W/BLK LEADWIRE	68	2262706	SPRING, BOWGUARD, NIK	122	2261218	WIRE HARNESS (MAX 101)
14	830028	SCREW 10-32 X .164"	69	2011365	SCREW-COLLAR/NEW KNOB	123	2260325	WIRE, BLK W/GRN STRIPE 11 1/4"
15	973025	SPACER -BRUSH PLATE (2 REQ'D)	70	2994833	BAG ASSEMBLY -STRAP	124	2260326	WIRE, RED W/YEL STRIPE 16 1/2"
16	830027	SCREW -SELF TREADED 10-32 X 2" (2 REQ'D)	*71	2663802	STRAP -VELCRO	125	2267500	CABLE ASSEMBLY-RIGHT (5')
17	431110	CENTER HOUSING FIELD ASSEMBLY	72	2994830	BAG ASSEMBLY-MAXXUM	126	2267510	CABLE ASSEMBLY-LEFT (5')
18	701043	O-RING (2 REQ'D)	*73	2263431	SCREW 1/4-20 X 3.5" PPH (6 REQ'D)	127	2265430	CABLE JACKET (5')
19	144017	BEARING -FLANGE (SERVICE ONLY)	*74	2261713	WASHER-1/4" FLAT S/S (6 REQ'D)	128	2265110	BOOT-CONTROL BOX
20	2300160	BRUSH END HOUSING ASSEMBLY	*75	2263103	NUT -NYLOCK JAM 1/4-20 S/S (6 REQ'D)	129	2265115	BOOT-FOOT PEDAL BASE
21	880025	SEAL (2 REQ'D)	*76	2301720	WASHER-MOUNTING/RUBBER (6 REQ'D)	130	2372100	SCREW-8-18 X 5/8", THDT (2 REQ'D)
22	701009	O-RING -THRU BOLT (2 REQ'D)	78	2266610	DECAL-ON/OFF SWITCH	131	2261714	WASHER-MAXXUM FT PDL (2 REQ'D)
23	830096	THRU BOLT 12-24 X 11.56" SS (2 REQ'D)	79	2266000	BEARING, BALL-STEEL (2 REQ'D)	132	2261900	BRACKET-CONDUIT
24	2317050	MOTOR ASSEMBLY	80	2266115	BEARING CONE	133	2263210	BRACKET-CONDUIT ADJUST
25	2032061	TUBE (COMP) W/CSK HOLE -43 3/4"	81	2261615	COLLAR HALF-ZINC-2 PER	134	2262720	SPRING-CONDUIT ADJUST
26	2331130	PROPELLER (W.WEDGE)	82	2263450	SCREW-10-24 X 7/8" (2 REQ'D)	135	2263460	SCREW-1/4-20 X 2"
27	2091701	WASHER-PROP (LARGE) MAX 101	83	2260283	CONTROL BOX COVER-MAXX	136	2340610	CONNECTOR CABLE- 12"
28	2093101	NUT-PROP (LARGE) MAX 101	84	2372100	SCREW-8-18 X 5/8" THDT (4 REQ'D)	137	2340612	CONNECTOR CABLE-48" (2 REQ'D)
29	2006601	DECAL-LOWER UNIT	85	2265539	DECAL COVER, MAXXUM 101	138	2261227	LEADWIRE (A/T VARIABLE)
32	2991995	MOUNT, BOW ASY, FW STD	86	2260150	POINTER DISC TRNSLCNT	139	2020700	TERMINAL RING, 3/8" (2 REQ'D)
33	2264206	ARM-UPPER FW	87	2265800	DECAL-INDICATOR	140	2256300	TIE WRAP-5.5" BLACK
34	2260513	HINGE PIN (MAX,A/T)	88	2262531	CONTROL BOX-PLASTIC	141	2263201	CLAMP WIRE HARNESS MICRO
35	2263010	E-RING 3/8" DIA. SHAFT (2 REQ'D)	89	2262109	SCREW-8-32 X 1/2" THD CUT (3 REQ'D)	142	2332103	SCREW-6-20 X 3/8" THD
36	2293501	BUSHING, STAINLESS STEEL (4 REQ'D)	90	2267800	GEAR-INDICATOR (3 REQ'D)	143	2260312	WIRE, BLK W/WHT STRIPE 19 1/4"
37	2263500	BOLT, SHOULDER (4 REQ'D)	91	2262220	INDICATOR-DRIVE	144	2254031	SWITCH-MOM/OFF/COM
38	2994307	ARM-LOWER ASSEMBLY, STD, FW	92	2261905	BRACKET/INDICATOR	145	2266412	SWITCH PLATE, FT PEDAL
39	2999270	MOTOR REST ASSEMBLY, STD, FW	93	2301310	SCREW-8-18 X 1/2" SS	146	2332103	SCREW-6-20 X 3/8" THD (2 REQ'D)
40	2261505	SPACER, MOTOR REST (6 REQ'D)	94	2264015	LIGHT/INDICATOR	147	2256301	TIE WRAP-5.5" WHITE (2 REQ'D)
41	2251962	BOWPLATE, STD FW MACHINED	95	2263201	CLAMP WIRE HARNESS MICRO	148	2365109	INSULATING PAD (2.4 X 4.7")
42	2251601	ROPE (40"), MAXXUM	96	2301310	SCREW-8-18 X 1/2" SS	149	2264511	BOTTOM PLATE, MAX 101
43	2150400	PULL-GRIP	97	2355410	SHRINK TUBE-3/8 OD X 2" (2 REQ'D)	150	9953104	SCREW-8 X 1/2" SS (5 REQ'D)
44	2151700	WASHER-EYE SHAFT(.562")	98	2232360	PULLEY-CABLE DRUM	151	2263455	SCREW #12-14 X 1/2" THR FRM (4 REQ'D)
45	2261707	WASHER-3/8 X 1/2 X.016" (2 REQ'D)	99	2261730	WASHER-NYLON A/T	152	2265126	BUMPER PAD, FOOT PEDAL (4 REQ'D)
46	2236000	BEARING NYLINER (2 REQ'D)	100	2267805	PINION DRIVE (ZINC PLATE)	153	2332106	SCREW -8-32 X 1/2 TRI-LOBE (2 REQ'D)
47	2263434	SCREW, 8-18 X 1" PPH (2 REQ'D)	101	2266246	TOP BEARING RACE)			
48	2152610	SPRING-PIN (LOCKBAR) (2 REQ'D)	102	2263410	SCREW-8-32 X 5/16" (ZINC PLATE) (2 REQ'D)			
49	2233600	LOCK BAR- (BOW MOUNT)	103	2992026	FOOT PEDAL ASSEMBLY MAX			
50	2233602	LOCK BAR, REAR - ZINC	104	2790002	FOOT PEDAL/PLUG ASSEMBLY			
51	2152700	SPRING -(LOCKBAR)	105	2263700	PUSH-BUTTON FOOT PEDAL			
*52	2262703	SPRING STOP	106	2302732	SPRING-LOWER PEDAL SS			
53	2153603	EYE SHAFT -2LOCKBAR STD	107	2264023	SWITCH-SEALED ASSEMBLY			
54	2260506	HINGE-PIN (HEADLESS) ZINC	108	2262114	SCREW-MOUNTING/SWITCH (2 REQ'D)			

* This item is part of an assembly. This item cannot be sold separately due to machining and /or assembly that is required.

Max 101

