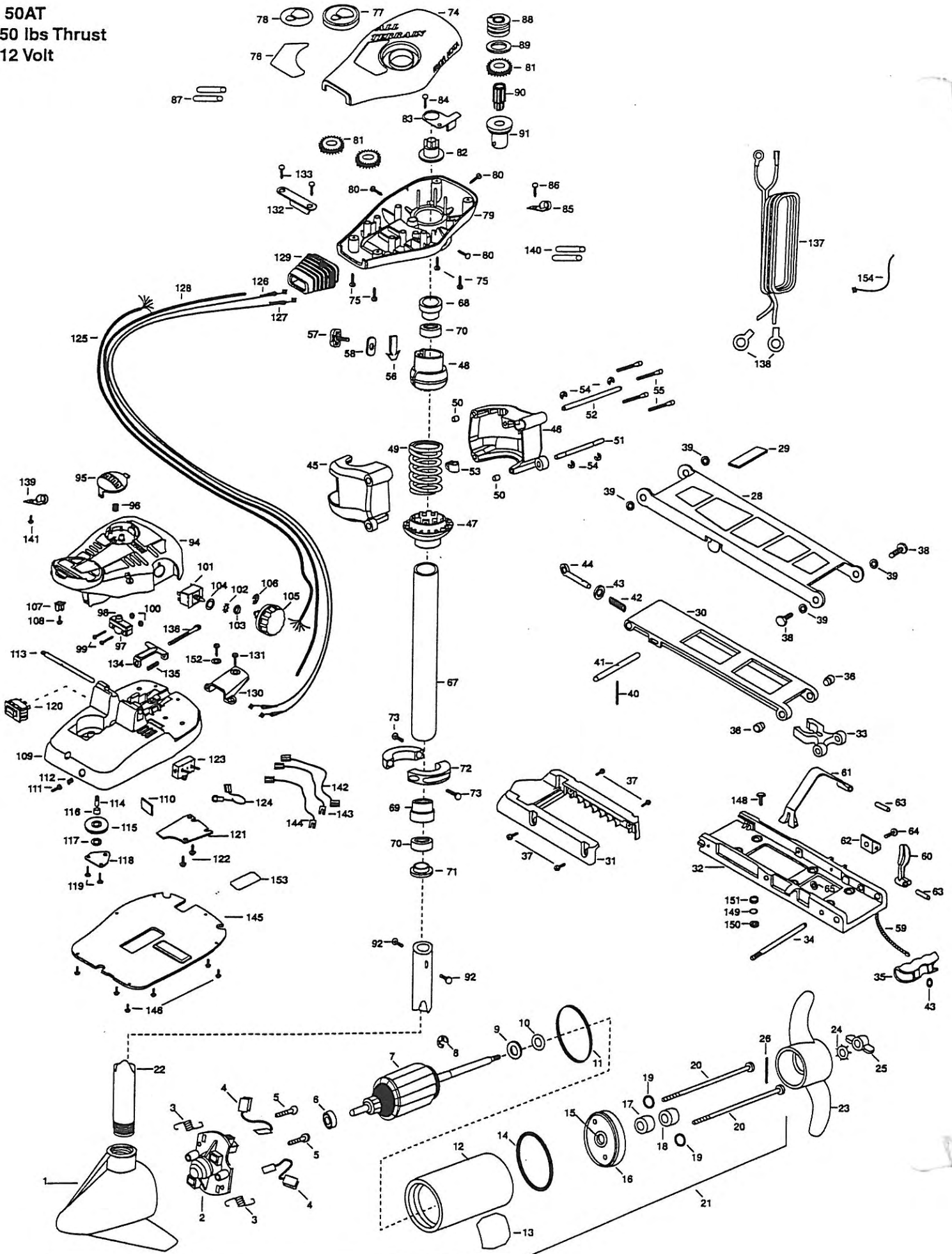


50AT
50 lbs Thrust
12 Volt



JWA MARINE, 706
 ordered from any o
 Be sure to provide
 Please use the correct part numbers from the parts list. Payment for any parts ordered from the MINN KOTA parts department, may be by cash, personal check, Discover Card MasterCard or VISA. To order, call 1-800-227-6433 or FAX 1-800-527-4464.

Fuera de los Estados Unidos, consultar la lista anexa para ubicar el Centro de servicio autorizado MINN KOTA. No dejar de incluir el número del MODELO y el número de SERIE del motor para el cual se solicitan las piezas. Usar siempre los números de pieza correctos indicados en la lista de piezas.

Hors de États-Unis, voir la liste ci-jointe pour le Centre de Service Agréé MINN KOTA le plus proche. Lors d'une commande, ne pas oublier de fournir le numéro de modèle et le numéro de série du moteur. Toujours mentionner le numéro de pièce exact figurant sur la liste des pièces de rechange.

Fora da América do Norte, queira consultar a lista anexa para ir ao Centro de Serviço Autorizado MINN KOTA. Não deixe de incluir o número do MODELO e o número de SÉRIE do seu motor ao pedir peças. Sempre use os números corretos das peças da lista de peças.

1	409026	BRUSH END HOUSING W/COIL	53	2262310	GUIDE-ROPE	105	2260170	KNOB-SPEED CONTROL
2	406403	BRUSH PLATE ASSY 3.5/8 DIA	54	2263010	E-RING 3/8 DIA. SHAFT (4 REQ'D)	106	2263000	E-RING
3	406082	SPRING- BRUSH (2 REQ'D)	55	2263470	SCREW-1/4-20 X 1-3/4 (4 REQ'D)	107	2260730	CONNECTOR 1/4 MALE TAB
4	406071	BRUSH (2 REQ'D)	56	2262800	TENSION BLOCK	108	2332103	SCREW-6-20 X 3/8
5	406342	BRUSH PLATE SCREW (2 REQ'D)	57	2011385	SCREW-TENSION KNOB	109	2264550	FOOT PEDAL BASE,
6	406010	BALL BEARING	58	2263100	NUT-1/4-20 INSERT	*110	2266413	TENSION SCREW-PLATE
7	406211	ARMATURE ASSEMBLY	59	2251600	ROPE	111	2262650	PIN, CIRCUIT BREAKER
8	405300	E-RING-ARMATURE	60	2267200	LATCH LEVER	112	2262721	SPRING, RESET PIN
9	406170	WASHER-THRUST (STEEL)	61	2263800	STRAP-HOLD DOWN	113	2260511	PIN-PIVOT
10	405171	WASHER-NYLATRON THRUST	62	2261910	BRACKET HOLD DOWN STRAP	114	2260515	PIN-PULLEY-AXLE
11	406490	GASKET	63	2260500	PIN-ROLL LATCH LEVER (2 REQ'D)	115	2262300	PULLEY (FOOT PEDAL)
12	406257	CENTER HOUSING FIELD ASSY	64	2263440	SCREW-10-24 X 3/4	116	2260000	BEARING-PULLEY
13	2006609	DECAL,MOT-LWR UN STGR/LN	65	2333101	NUT-HEX	117	2261705	WASHER-NYLATRON
14	406470	O-RING	66	2992015	TUBE W/BEARING RACE ASSY	118	2266400	COVER-PULLEY
15	406600	BEARING-(FLANGE,SERVICE ONLY)	67	2272066	TUBE OUTER-18"	119	2301310	SCREW-8-18 X 1/2 (2 REQ'D)
16	406033	PLAIN END HOUSING	68	2266260	BEARING RACE - (565T)	120	2254031	SWITCH-MOM/OFF/COM
17	406461	SEAL	69	2266220	BEARING RACE - STEEL	121	2266412	SWITCH PLATE, FT PEDAL
18	406471	SEAL-W/CUP	70	2266000	BEARING- BALL (2 REQ'D)	122	2332103	SCREW 6-20 X 3/8 (2 REQ'D)
19	405462	O-RING THRU BOLT (2 REQ'D)	71	2266115	BEARING CONE	123	2268200	CIRCUIT BREAKER-30AMP
20	406353	THRU BOLT (2 REQ'D)	72	2261615	COLLAR HALF (2 REQ'D)	124	2260601	WIRE CNTG-10GA.BREAKER
21	2099030	MOTOR ASSEMBLY	73	2263450	SCREW-10-24 X 7/8 (2 REQ'D)	125	2261207	WIRE HARNESS
22	2032063	TUBE COMP W/CSK HOLE	74	2260265	COVER-CTR BOX	126	2267500	CABLE ASSY-RIGHT (5')
23	2091150	PROPELLER (W.WEDGE)	75	2372100	SCREW-8-18 X 1/2 (4 REQ'D)	127	2267510	CABLE ASSY-LEFT (5')
24	2051700	LOCKWASHER-PROP (MEDIUM)	76	2265519	DECAL-COVER 50AT	128	2265430	CABLE JACKET (5')
25	2053100	NUT-PROP (MEDIUM)	77	2260150	POINTER DISC TRNSLCNT RED	129	2265110	BOOT-CONTROL BOX
26	2092600	PIN-DRIVE	78	2265800	DECAL-INDICATOR	130	2265115	BOOT-FOOT PEDAL BASE
27	2991987	BOWGUARD 360 ASSY FW	79	2262531	CONTROL BOX-PLASTIC	131	2372100	SCREW-8-18 X 5/8 THD (2 REQ'D)
28	2264201	ARM-UPPER FW/STD,BWGRD	80	2262109	SCREW-8-32 X 1/2 (3 REQ'D)	132	2261900	BRACKET-CONDUIT
29	2265120	BUMPER (UPPER ARM)	81	2267800	GEAR-INDICATOR (3 REQ'D)	133	2301310	SCREW-8-18 X 1/2 (2 REQ'D)
30	2254345	ARM-LWR FW	82	2262220	INDICATOR-DRIVE	134	2263210	BRACKET-CONDUIT ADJUST
31	2263900	MOTOR REST	83	2261905	BRACKET-INDICATOR	135	2262720	SPRING-CONDUIT
32	2251942	BOW PLATE	84	2301310	SCREW-8-18 X 1/2	136	2263460	SCREW-1/4-20 X 2
33	2293801	TUBE LOCK	85	2263201	CLAMP WIRE HARNESS MICRO	137	2261224	LEADWIRE-WRING TERM.
34	2260506	HINGE-PIN (HEADLESS)	86	2301310	SCREW-8-18 X 1/2	138	2020700	TERMINAL RING, 3/8 (2 REQ'D)
35	2150400	PULL-GRIP	87	2355410	SHRINK TUBE-3/8 (2 REQ'D)	139	2263201	CLAMP WIRE HARNESS MICO
36	2236000	BEARING NYLINER (2 REQ'D)	88	2232360	PULLEY-CABLE DRUM	140	2375400	SHRINK TUBE 1/4 X 1-1/4 (2 REQ'D)
37	2303431	SCREW 1/4-20X5/8 (4 REQ'D)	89	2261730	WASHER-NYLON	141	2332103	SCREW-6-20 X 3/8
38	2293511	BOLT-UPPER ARM (2 REQ'D)	*90	2267805	PINION DRIVE	142	2260301	CONNECTING WIRE (SWITCH)
39	2293500	BUSHING-SHOULDER (4 REQ'D)	*91	2266246	TOP BEARING RACE	143	2260311	CONNECTING WIRE 19 1/4"
40	2152610	SPRING-PIN (LOOKBAR)	92	2263410	SCREW-8-32 X 5/16 (2 REQ'D)	144	2260322	WIRE- BLK/BLU 12"
41	2233600	LOCK BAR- (BOW MOUNT)	93	2992020	FOOT PEDAL ASSY	145	2266411	BOTTOM PLATE A/T FTPDL
42	2152700	SPRING-(LOCKBAR)	*94	2790002	FOOT PEDAL/PLUG ASSY	146	9953104	SCREW- 8 X 1/2 (8 REQ'D)
43	2151700	WASHER-EYE SHAFT (2 REQ'D)	95	2263700	PUSH-BUTTON FOOT PEDAL	147	2994811	BAG ASSY-(BOLTS,NUTS,WASHERS)
44	2153600	EYE SHAFT	96	2302732	SPRING-LOWER PEDAL	148	2153501	BOLT-MOUNTING- (6 REQ'D)
45	2261921	BRACKET BASE-LEFT	97	2264020	SWITCH MOMENTARY	*149	2151726	WASHER-5/16 (6 REQ'D)
46	2261931	BRACKET BASE-RGHT	98	2265140	BOOT-MICROSWITCH	*150	2153100	NUT-5/16-MOUNTING (6 REQ'D)
47	2261532	SPRING SLEEVE LWR	*99	2262114	SCREW-MOUNTING/SWITCH (2 REQ'D)	*151	2301720	WASHER-RUBBER (6 REQ'D)
48	2261520	SPRING-SLEEVE UPPER	100	2233100	NUT-SWITCH MOUNT (2 REQ'D)	152	2261714	WASHER- MAXXUM FT PDL (2 REQ'D)
49	2262706	SPRING-BOWGUARD NIK PLT	101	2264026	SWITCH-5 SPEED	153	2265606	DECAL- AT FT PDL
50	2267300	BUSHING-DOWEL (2 REQ'D)	102	2261701	LOCKWASHER-STAR	154	2256300	TIE WRAP- 5.5"
51	2260530	HINGE PIN-LOWER	103	2263105	NUT-HEX			
52	2260520	HINGE PIN-UPPER	104	2261715	SPACER-SWITCH			

* This item is part of an assembly. This item cannot be sold separately due to machining and /or assembly that is required.

