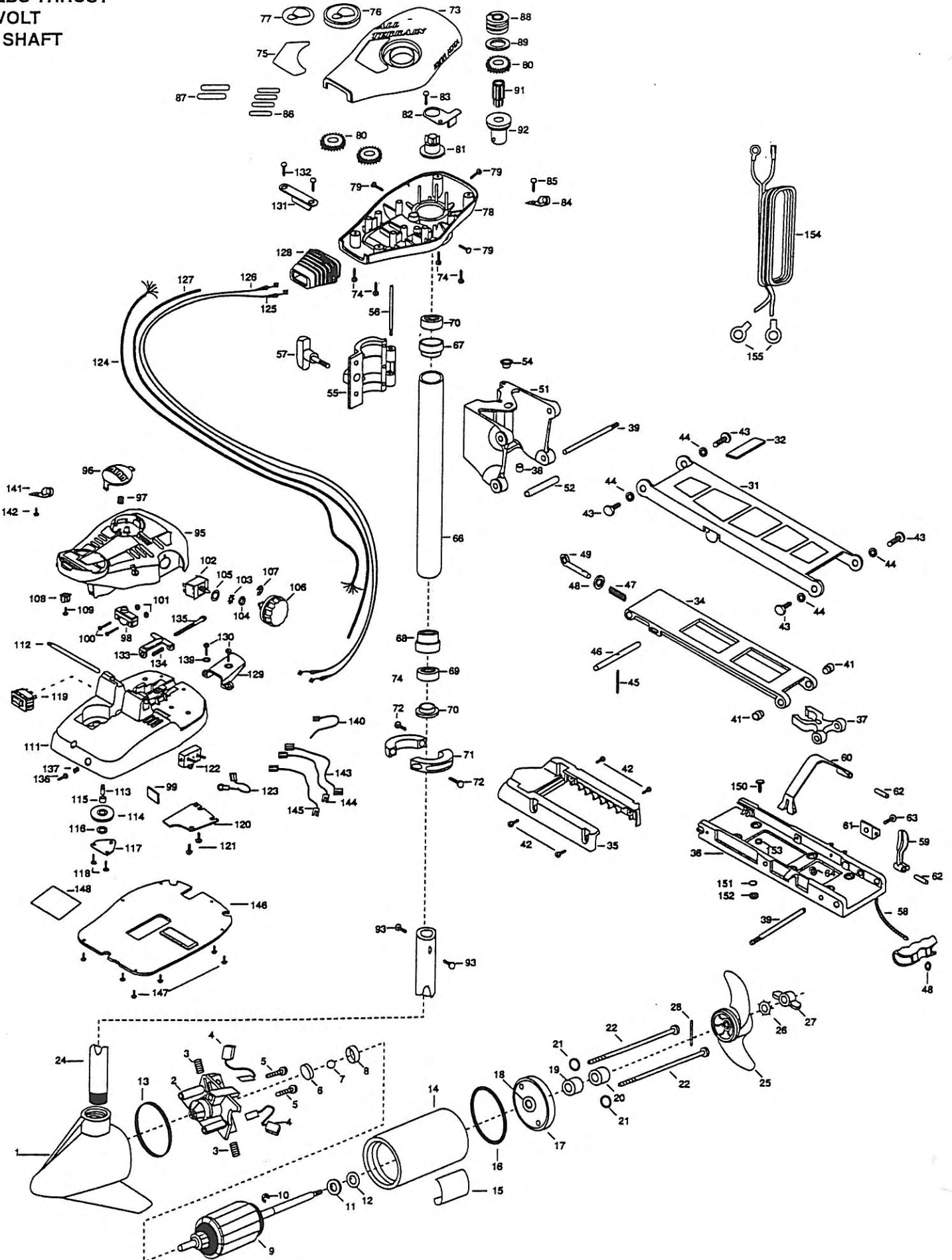


40AT
40 LBS THRUST
12 VOLT
42" SHAFT



ordered from any other source, Minnesota 55007. In Canada, parts may be ordered from any Canadian Authorized Service Centers shown on the enclosed list. Be sure to provide MODEL and SERIAL numbers of your motor when ordering parts. Please use the correct part numbers from the parts list. Payment for any parts ordered from the MINN KOTA parts department, may be by cash, personal check, Discover Card MasterCard or VISA. To order, call 1-800-227-6433 or FAX 1-800-527-4484.

lista anexa para ubicar el Centro de servicio autorizado MINN KOTA. No dejar de incluir el número del MODELO y el número de SERIE del motor para el cual se solicitan las piezas. Usar siempre los números de pieza correctos indicados en la lista de piezas.

moins de Etats-Unis, voir la liste ci-jointe pour le Centre de Service Agréé MINN KOTA le plus proche. Lors d'une commande, ne pas oublier de fournir le numéro de modèle et le numéro de série du moteur. Toujours mentionner le numéro de pièce exact figurant sur la liste des pièces de rechange.

Fora da América do Norte, consulte a lista anexa para localizar o Centro de Serviço Autorizado MINN KOTA. Não deixe de incluir o número do MODELO e o número de SÉRIE do seu motor ao pedir peças. Sempre use os números corretos das peças da lista de peças.

1	406027	BRUSH END HOUSING W/SP COIL	57	2260180	KNOB- HINGE COVER	*111	2264500	FOOT PEDAL BASE
2	406405	BRUSH PLATE ASSEMBLY W/BEARING	58	2251600	ROPE- 31"	112	2260511	PIN- PIVOT FOOT PEDAL
3	406081	BRUSH SPRING (2 REQ'D)	59	2267200	LATCH LEVER	*113	2260515	PIN- PULLEY- AXLE
4	406072	BRUSH ASSEMBLY (2 REQ'D)	60	2263800	STRAP- HOLD DOWN	114	2262300	PULLEY- FOOT PEDAL
5	406341	BRUSH PLATE SCREW (2 REQ'D)	61	2261910	BRACKET- HOLD DOWN STRAP	115	2260000	BEARING- PULLEY
6	403050	THRUST DISC	62	2260500	PIN- ROLL LATCH LEVER (2 REQ'D)	116	2261705	WASHER- NYLATRON
7	403010	THRUST BALL -STEEL	63	2263440	SCREW- 10-24 X 3/4"	117	2268400	COVER- PULLEY
8	406090	BRUSH HOLDER	64	2333101	NUT- HEX	118	2301310	SCREW- 8-18 X 1/2" (2 REQ'D)
9	405205	ARMATURE ASSEMBLY	65	2992015	TUBE W/BEARING RACE ASSEMBLY 18"	119	2254031	SWITCH- MOM/OFF/CON
10	405300	E-RING	66	2272066	TUBE OUTER- 18" ORDER 68	120	2266412	SWITCH PLATE
11	406170	THRUST WASHER- STEEL (AS REQ'D)	67	2266260	BEARING- RACE	121	2332103	SCREW 6-20 X 3/8 (2 REQ'D)
12	405171	THRUST WASHER- NYLON (AS REQ'D)	68	2266220	BEARING- RACE STEEL	122	2268200	CIRCUIT BREAKER- 30AMP
13	403460	O-RING	69	2266000	BEARING BALL- STEEL (2 REQ'D)	123	2260601	WIRE CONNECTING- 10GA.
14	405259	CENTER SECTION W/ MAGNETS	70	2268115	BEARING CONE	124	2261207	WIRE HARNESS 5'
15	2006609	DECAL- MOTOR	71	2261615	COLLAR (2 REQ'D)	125	2267500	CABLE ASSEMBLY- RIGHT 5'
16	406460	O-RING	72	2263450	SCREW- 10-24 X 7/8" (2 REQ'D)	126	2267510	CABLE ASSEMBLY- LEFT 5'
17	406035	PLAIN END HOUSING	73	2260264	COVER- CONTROL BOX	127	2265430	CABLE JACKET 5'
18	406600	FLANGE BEARING (SERVICE ONLY)	74	2372100	SCREW- 8-18 X 5/8" (4 REQ'D)	128	2265110	BOOT- CONTROL BOX
19	408461	SEAL	75	2265530	DECAL- COVER	129	2265115	BOOT- FOOT PEDAL BASE
20	406471	SEAL- CUP	76	2260150	POINTER DISC TRANSLUCENT RED	130	2372100	SCREW- 8-18 X 5/8" (2 REQ'D)
21	401462	O-RING- THRU BOLT (2 REQ'D)	77	2265800	DECAL- INDICATOR	131	2261900	BRACKET- CONDUIT
22	405352	THRU BOLT (2 REQ'D)	78	2262531	CONTROL BOX	132	2301310	SCREW- 8-18 X 1/2" (2 REQ'D)
23	2069041	MOTOR- ASSEMBLY	79	2262109	SCREW-8-32 X 1/2" (3 REQ'D)	133	2263210	BRACKET- CONDUIT ADJUSTMENT
24	2032063	TUBE- COMPOSITE 42"	80	2267800	GEAR- INDICATOR (3 REQ'D)	134	2262720	SPRING- CONDUIT
25	2061125	PROP- WEEDLESS WEDGE	81	2262220	INDICATOR- DRIVE	135	2263460	SCREW- 1/4-20 X 2"
26	2051700	LOCKWASHER- PROP	82	2261905	BRACKET/INDICATOR	136	2262650	PIN- CIRCUIT BREAKER RESET
27	2053100	NUT- PROP	83	2301310	SCREW- 8-18 X 1/2"	137	2262721	SPRING- RESET PIN
28	2092600	PIN- DRIVE	84	2263201	CLAMP- WIRE HARNESS	139	2261714	WASHER- MAXXUM FT PDL (2 REQ'D)
30	2881954	STD- BOWMOUNT ASSEMBLY	85	2301310	SCREW- 8-18 X 1/2"	140	2256300	TIE WRAP- 5.5" BLACK
31	2264201	ARM- UPPER	86	2375400	SHRINK TUBE- 1/4 OD X 1-3/4" (4 REQ'D)	141	2263201	CLAMP- WIRE HARNESS MICRO
32	2265120	BUMPER- UPPER ARM	87	2355410	SHRINK TUBE- 3/8 OD X 2" (2 REQ'D)	142	2332103	SCREW- 6-20 X 3/8
33	2774310	ARM- LOWER ASSEMBLY	88	2232360	PULLEY- CABLE DRUM	143	2260301	CONNECTING WIRE- SWITCH
34	2254342	ARM- LOWER— ORDER 33 -INCL 34,40,45,46	89	2261730	WASHER- NYLON	144	2260311	CONNECTING WIRE- 19-1/4"
35	2263900	MOTOR REST	90	2776203	TOP BEARING RACE ASSEMBLY INCLUDES 91,92	145	2260322	WIRE- BLK/BLU 12"
36	2251942	BOW PLATE	*91	2267805	PINION DRIVE	146	2266411	BOTTOM PLATE- A/T FOOTPDL
37	2293801	TUBE LOCK	*92	2266245	BEARING RACE- TOP	147	9953104	SCREW- 8 X 1/2" (8 REQ'D)
*38	2264705	INSERT- HINGE BASE	93	2263410	SCREW- 8-32 X 5/16" (2 REQ'D)	148	2265606	DECAL
39	2260506	HINGE- PIN HEADLESS (2REQ'D)	*94	2992020	FOOT PEDAL ASSEMBLY- 5 SPEED	149	2994803	BAG ASSEMBLY (INCLUDES 150-153)
40	2150400	PULL- GRIP	95	2790002	FOOT PEDAL- PLUG ASSEMBLY	*150	2153501	BOLT-MOUNTING ORDER (4 REQ'D)
41	2236000	BEARING NYLINER (2 REQ'D)	96	2263700	PUSH BUTTON- FOOT PEDAL	*151	2151726	WASHER- 5/16" ORDER (4 REQ'D)
42	2303431	SCREW- 1/4-20 X 5/8" (4 REQ'D)	97	2302732	SPRING- LOWER PEDAL	*152	2153100	NUT- 5/16" MOUNTING (4 REQ'D)
43	2293511	BOLT- UPPER ARM (4 REQ'D)	98	2264020	SWITCH- MOMENTARY	*153	2301720	WASHER- RUBBER (6 REQ'D)
44	2293500	BUSHING- SHOULDER UPPER ARM (4 REQ'D)	*99	2266413	PLATE- TENSION SCREW	154	2261224	LEADWIRE- W/ RING TERMINALS
45	2152610	SPRING- PIN LOCKBAR	100	2262114	SCREW- MOUNTING SWITCH (2 REQ'D)	155	2020700	RING TERMINALS (2 REQ'D)
46	2233600	LOCK BAR- BOW MOUNT	101	2233100	NUT- SWITCH MOUNT (2 REQ'D)			
47	2152700	SPRING- LOCKBAR	102	2264026	SWITCH- 5 SPEED			
48	2151700	WASHER- EYE SHAFT (2 REQ'D)	103	2261701	LOCKWASHER- STAR			
49	2153600	EYE SHAFT	104	2263105	NUT- HEX			
50	2771812	HINGE BASE ASSEMBLY- INCLUDES 38,51,54	105	2261715	SPACER- SWITCH 5 SP MODELS			
*51	2261811	HINGE BASE- ORDER 50	106	2260170	KNOB- SPEED CONTROL 5 SPEED			
52	2231570	SLEEVE ROLLER	107	2263000	E-RING			
*54	2232350	EYELET-ROPE	108	2260730	CONNECTOR- 1/4 MALE			
55	2261821	HINGE DOOR	109	2332103	SCREW- 6-20 X 3/8"			
56	2262640	PIN-HINGE DOOR	110	2774550	FT PEDAL BASE ASSEMBLY INCLUDES 111,113			

* This item is part of an assembly. This item cannot be sold separately due to machining and /or assembly that is required.

PARTS LIST

40A/T

