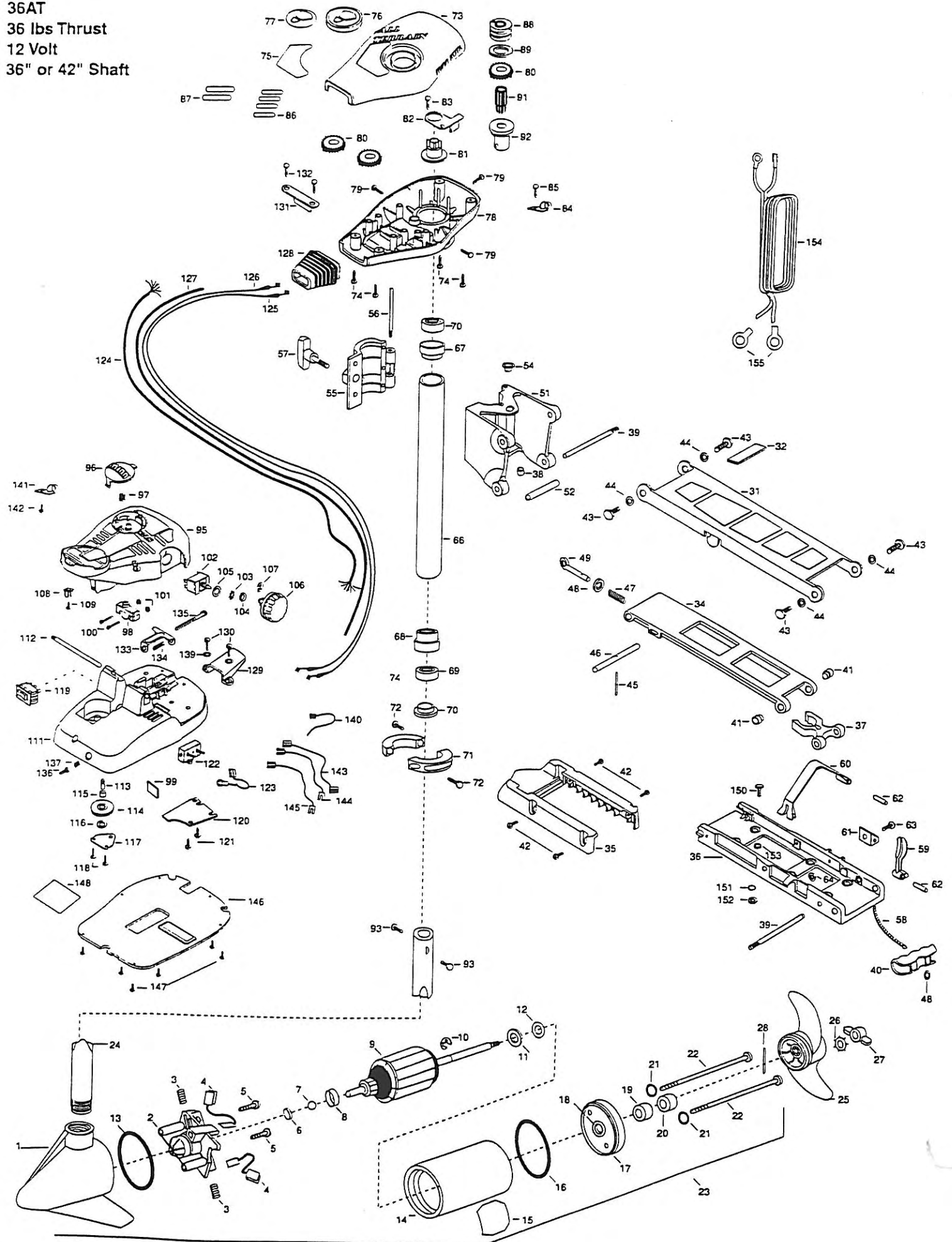


36AT
36 lbs Thrust
12 Volt
36" or 42" Shaft



JWA MARINE, 70F
 Be sure to provide
 Please use the correct part numbers from the parts list. Payment for any parts ordered from the MINN KOTA parts department, may be by cash, personal check, Discover Card MasterCard or VISA. To order, call 1-800-227-6433 or FAX 1-800-527-4464.

Fuera de los Estados Unidos, consultar la lista anexa para ubicar el Centro de servicio autorizado MINN KOTA. No dejar de incluir el número del MODELO y el número de SERIE del motor para el cual se solicitan las piezas. Usar siempre los números de pieza correctos indicados en la lista de piezas.

Hors de États-Unis, voir la liste ci-jointe pour le Centre de Service Agréé MINN KOTA le plus proche. Lors d'une commande, ne pas oublier de fournir le numéro de modèle et le numéro de série du moteur. Toujours mentionner le numéro de pièce exact figurant sur la liste des pièces de rechange.

Fora da América do Norte, consultar a lista anexa para encontrar o Centro de Serviço Autorizado MINN KOTA. Não deixe de incluir o número do MODELO e o número de SÉRIE do seu motor ao pedir peças. Sempre use os números corretos das peças da lista de peças.

| | | | | | | | | |
|-----|---------|--|-----|---------|--|------|---------|---|
| 1 | 406027 | BRUSH END HOUSING | 52 | 2231570 | SLEEVE ROLLER | 104 | 2263105 | NUT- HEX |
| 2 | 406405 | BRUSH PLATE ASSEMBLY | *54 | 2232350 | EYELET-ROPE | 105 | 2261715 | SPACER- SWITCH 5 SP MODELS |
| 3 | 406081 | BRUSH SPRING (2 REQ'D) | 55 | 2261821 | HINGE DOOR | 106 | 2260170 | KNOB- SPEED CONTROL 5 SPEED |
| 4 | 406072 | BRUSH ASSEMBLY (2 REQ'D) | 56 | 2262640 | PIN-HINGE DOOR | 107 | 2263000 | E-RING |
| 5 | 406341 | BRUSH PLATE SCREW (2 REQ'D) | 57 | 2260180 | KNOB- HINGE COVER | 108 | 2260730 | CONNECTOR- 1/4 MALE |
| 6 | 403050 | THRUST DISC | 58 | 2251600 | ROPE- 31" | 109 | 2332103 | SCREW- 6-20 X 3/8" |
| 7 | 403010 | BALL | 59 | 2267200 | LATCH LEVER | 110 | 2774550 | FT PEDAL BASE ASSEMBLY INCLUDES 111,113 |
| 8 | 406090 | BRUSH HOLDER | 60 | 2263800 | STRAP- HOLD DOWN | *111 | 2264550 | FOOT PEDAL BASE |
| 9 | 405205 | ARMATURE ASSEMBLY | 61 | 2261910 | BRACKET- HOLD DOWN STRAP | 112 | 2260511 | PIN- PIVOT FOOT PEDAL |
| 10 | 405300 | E-RING | 62 | 2260500 | PIN- ROLL LATCH LEVER (2 REQ'D) | *113 | 2260515 | PIN- PULLEY- AXLE |
| 11 | 406170 | THRUST WASHER- STEEL (AS REQ'D) | 63 | 2263440 | SCREW- 10-24 X 3/4" | 114 | 2262300 | PULLEY- FOOT PEDAL |
| 12 | 405171 | THRUST WASHER- NYLON (AS REQ'D) | 64 | 2333101 | NUT- HEX | 115 | 2260000 | BEARING- PULLEY |
| 13 | 403460 | O-RING | 65 | 2992015 | TUBE W/BEARING RACE ASSEMBLY 18" | 116 | 2261705 | WASHER- NYLATRON |
| 14 | 405259 | CENTER SECTION W/ MAGNETS | 66 | 2272066 | TUBE OUTER- 18" ORDER 68 | 117 | 2266400 | COVER- PULLEY |
| 15 | 2006609 | DECAL- MOTOR | 67 | 2266260 | BEARING- RACE | 118 | 2301310 | SCREW- 8-18 X 1/2" (2 REQ'D) |
| 16 | 406460 | O-RING | 68 | 2266220 | BEARING- RACE STEEL | 119 | 2254031 | SWITCH- MOM/OFF/CON |
| 17 | 406035 | PLAIN END HOUSING | 69 | 2266000 | BEARING BALL- STEEL (2 REQ'D) | 120 | 2266412 | SWITCH PLATE |
| 18 | 406600 | FLANGE BEARING (SERVICE ONLY) | 70 | 2266115 | BEARING CONE | 121 | 2332103 | SCREW 6-20 X 3/8 (2 REQ'D) |
| 19 | 406461 | SEAL | 71 | 2261615 | COLLAR (2 REQ'D) | 122 | 2268200 | CIRCUIT BREAKER- 30AMP |
| 20 | 406471 | SEAL- CUP | 72 | 2263450 | SCREW- 10-24 X 7/8" (2 REQ'D) | 123 | 2260601 | WIRE CONNECTING- 10GA. |
| 21 | 401462 | O-RING- THRU BOLT (2 REQ'D) | 73 | 2260264 | COVER- CONTROL BOX | 124 | 2261207 | WIRE HARNESS 5' |
| 22 | 405352 | THRU BOLT (2 REQ'D) | 74 | 2372100 | SCREW- 8-18 X 5/8" (4 REQ'D) | 125 | 2267500 | CABLE ASSEMBLY- RIGHT 5' |
| 23 | 2069041 | MOTOR- ASSEMBLY | 75 | 2265525 | DECAL- COVER | 126 | 2267510 | CABLE ASSEMBLY- LEFT 5' |
| 24 | 2032062 | TUBE- COMPOSITE 36" | 76 | 2260150 | POINTER DISC TRANSLUCENT RED | 127 | 2265430 | CABLE JACKET 5' |
| | 2032063 | TUBE- COMPOSITE 42" | 77 | 2265800 | DECAL- INDICATOR | 128 | 2265110 | BOOT- CONTROL BOX |
| 25 | 2061125 | PROP- WEEDLESS WEDGE | 78 | 2262531 | CONTROL BOX | 129 | 2265115 | BOOT- FOOT PEDAL BASE |
| 26 | 2051700 | LOCKWASHER- PROP | 79 | 2262109 | SCREW-8-32 X 1/2" (3 REQ'D) | 130 | 2372100 | SCREW- 8-18 X 5/8" (2 REQ'D) |
| 27 | 2053100 | NUT- PROP | 80 | 2267800 | GEAR- INDICATOR (3 REQ'D) | 131 | 2261900 | BRACKET- CONDUIT |
| 28 | 2092600 | PIN- DRIVE | 81 | 2262220 | INDICATOR- DRIVE | 132 | 2301310 | SCREW- 8-18 X 1/2" (2 REQ'D) |
| 30 | 2881954 | STD- BOWMOUNT ASSEMBLY | 82 | 2261905 | BRACKET/INDICATOR | 133 | 2263210 | BRACKET- CONDUIT ADJUSTMENT |
| 31 | 2264201 | ARM- UPPER | 83 | 2301310 | SCREW- 8-18 X 1/2" | 134 | 2262720 | SPRING- CONDUIT |
| 32 | 2265120 | BUMPER- UPPER ARM | 84 | 2263201 | CLAMP- WIRE HARNESS MICRO | 135 | 2263460 | SCREW- 1/4-20 X 2" |
| 33 | 2774310 | ARM- LOWER ASSEMBLY | 85 | 2301310 | SCREW- 8-18 X 1/2" | 136 | 2262650 | PIN- CIRCUIT BREAKER RESET |
| 34 | 2254342 | ARM- LOWER— ORDER 33 -INCL 34,40,45,46 | 86 | 2375400 | SHRINK TUBE- 1/4 OD X 1-3/4" (4 REQ'D) | 137 | 2262721 | SPRING- RESET PIN |
| 35 | 2263900 | MOTOR REST | 87 | 2355410 | SHRINK TUBE- 3/8 OD X 2" (2 REQ'D) | 139 | 2261714 | WASHER- MAXXUM FT PDL |
| 36 | 2251942 | BOW PLATE | 88 | 2232360 | PULLEY- CABLE DRUM | 140 | 2256300 | TIE WRAP- 5.5" BLACK |
| 37 | 2293801 | TUBE LOCK | 89 | 2261730 | WASHER- NYLON | 141 | 2263201 | CLAMP- WIRE HARNESS MICRO |
| *38 | 2264705 | INSERT- HINGE BASE | 90 | 2776203 | TOP BEARING RACE ASSEMBLY INCLUDES 91,92 | 142 | 2332103 | SCREW- 6-20 X 3/8 (2 REQ'D) |
| 39 | 2260506 | HINGE- PIN (2 REQ'D) | *91 | 2267805 | PINION DRIVE | 143 | 2260301 | CONNECTING WIRE- SWITCH |
| 40 | 2150400 | PULL- GRIP | *92 | 2266245 | BEARING RACE- TOP | 144 | 2260311 | CONNECTING WIRE- 19-1/4 |
| 41 | 2236000 | BEARING NYLINER (2 REQ'D) | 93 | 2263410 | SCREW- 8-32 X 5/16" (2 REQ'D) | 145 | 2260322 | WIRE- BLACK/BLUE 12" |
| 42 | 2303431 | SCREW- 1/4-20 X 5/8" (4 REQ'D) | *94 | 2992020 | FOOT PEDAL ASSEMBLY- 5 SPEED | 146 | 2266411 | BOTTOM PLATE AT FT PDL |
| 43 | 2293511 | BOLT- UPPER ARM (4 REQ'D) | 95 | 2790002 | FOOT PEDAL- PLUG ASSEMBLY | 147 | 9953104 | SCREW-8 X 1/2" (8 REQ'D) |
| 44 | 2293500 | BUSHING- SHOULDER UPPER ARM (4 REQ'D) | 96 | 2263700 | PUSH BUTTON- FOOT PEDAL | 148 | 2265606 | DECAL |
| 45 | 2152610 | SPRING- PIN LOCKBAR | 97 | 2302732 | SPRING- LOWER PEDAL | 149 | 2994803 | BAG ASSEMBLY (INCLUDES 150-153) |
| 46 | 2233600 | LOCK BAR- BOW MOUNT | 98 | 2264020 | SWITCH- MOMENTARY | *150 | 2153501 | BOLT-MOUNTING ORDER (4 REQ'D) |
| 47 | 2152700 | SPRING- LOCKBAR | *99 | 2266413 | PLATE- TENSION SCREW | *151 | 2151726 | WASHER- 5/16" ORDER (4 REQ'D) |
| 48 | 2151700 | WASHER- EYE SHAFT (2 REQ'D) | 100 | 2262114 | SCREW- MOUNTING SWITCH (2 REQ'D) | *152 | 2153100 | NUT- 5/16" MOUNTING (4 REQ'D) |
| 49 | 2153600 | EYE SHAFT | 101 | 2233100 | NUT- SWITCH MOUNT (2 REQ'D) | *153 | 2301720 | WASHER- RUBBER (6 REQ'D) |
| 50 | 2771812 | HINGE BASE ASSEMBLY- INCLUDES 38,51,54 | 102 | 2264026 | SWITCH- 5 SPEED | 154 | 2261224 | LEADWIRE- W/ RING TERMINALS |
| *51 | 2261811 | HINGE BASE- ORDER 50 | 103 | 2261701 | LOCKWASHER- STAR | 155 | 2020700 | RING TERMINALS (2 REQ'D) |

* This item is part of an assembly. This item cannot be sold separately due to machining and /or assembly that is required.

