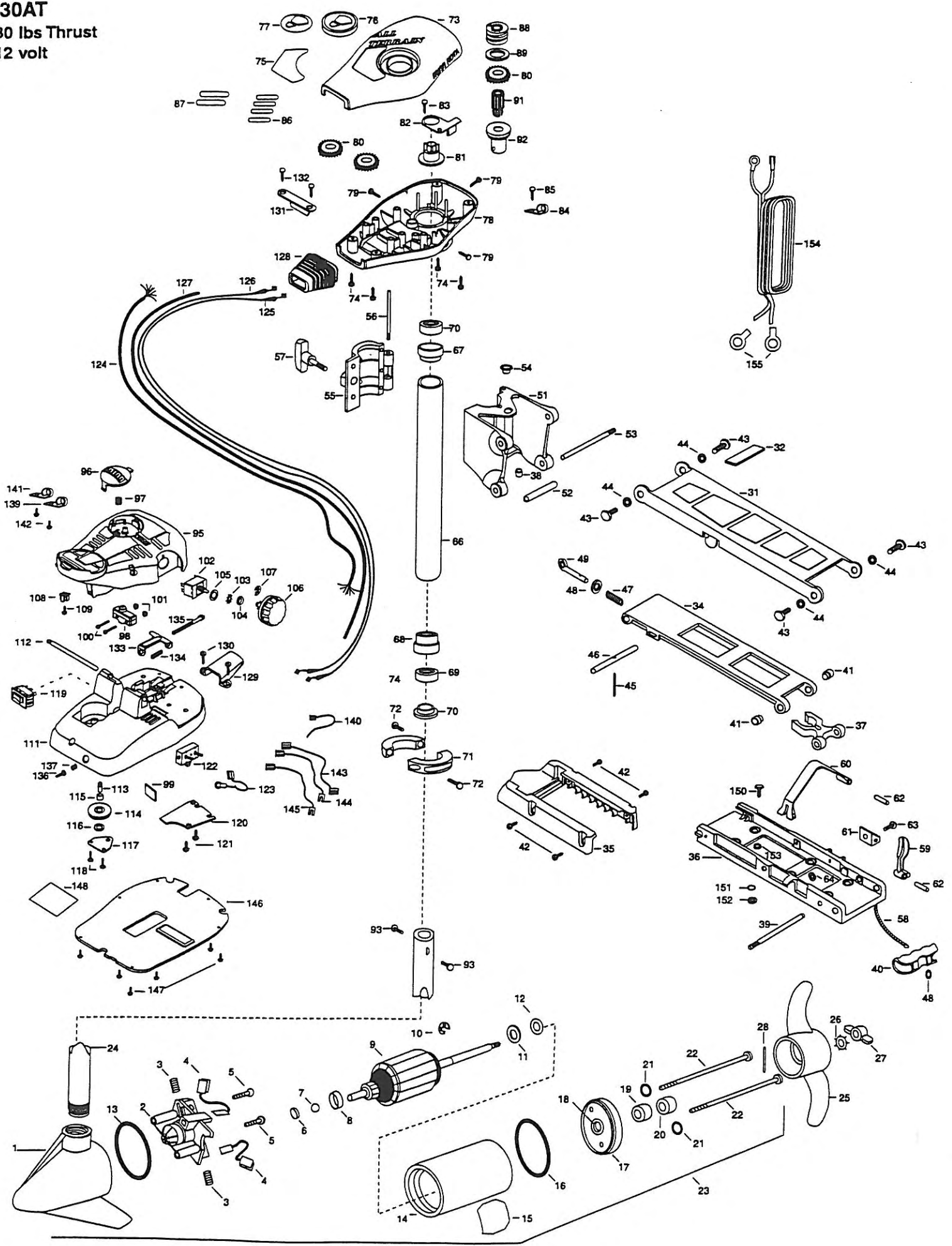


30AT
30 lbs Thrust
12 volt



Canadian Authorized Centers shown on the enclosed list. Be sure to provide the MODEL and SERIAL numbers of your motor for any parts ordered. The MINN KOTA parts department, may be by cash, personal check, Discover Card MasterCard, VISA, or C.O.D. To order, call 1-800-227-6433 or FAX 1-800-527-4464.

pour le Centre de Service Agréé MINN KOTA le plus proche. Ne pas oublier de fournir les numéros de Modèle et de Série of votre Moteur lorsque vous placez une commande. Employez toujours le numéro de pièce exact se trouvant sur la list des pièces de remplacement.

para identificar o Centro de Serviço Autorizado MINN KOTA. Não deixe de incluir o número do MODEL e número de SÉRIE do seu motor ao pedir peças. Sempre use os números corretos das peças da lista de peças.

PARTS LIST

30AT

1	403025	BRUSH END HOUSING W/ COIL	58	2262640	PIN-HINGE DOOR	110	2774550	FT PEDAL BASE ASSEMBLY INCLUDES 111,113
2	406405	BRUSH PLATE ASSEMBLY	57	2260180	KNOB- HINGE COVER	*111	2264550	FOOT PEDAL BASE
3	406081	BRUSH SPRING (2 REQ'D)	58	2251600	ROPE- 31"	112	2260511	PIN- PIVOT FOOT PEDAL
4	406072	BRUSH ASSEMBLY (2 REQ'D)	59	2267200	LATCH LEVER	*113	2260515	PIN- PULLEY- AXLE
5	406341	BRUSH PLATE SCREW (2 REQ'D)	60	2263800	STRAP- HOLD DOWN	114	2262300	PULLEY- FOOT PEDAL
6	403050	THRUST DISK	61	2261910	BRACKET- HOLD DOWN STRAP	115	2260000	BEARING- PULLEY
7	403010	BALL- STEEL	62	2260500	PIN- ROLL LATCH LEVER (2 REQ'D)	116	2261705	WASHER- NYLATRON
8	406090	BRUSH HOLDER	63	2263440	SCREW- 10-24 X 3/4"	117	2266400	COVER- PULLEY
9	403207	ARMATURE ASSEMBLY	64	2333101	NUT- HEX	118	2301310	SCREW- 8-18 X 1/2" (2 REQ'D)
10	405300	E-RING	65	2992015	TUBE W/BEARING RACE ASSEMBLY 18"	119	2254031	SWITCH- MOM/OFF/CON
11	406170	THRUST WASHER- STEEL (AS REQ'D)	66	2272066	TUBE OUTER- 18" ORDER 68	120	2266412	SWITCH PLATE
12	405171	THRUST WASHER- NYLON (AS REQ'D)	67	2266260	BEARING- RACE	121	2332103	SCREW- 6-20 X 3/8 (2 REQ'D)
13	403460	O-RING	68	2266220	BEARING- RACE STEEL	122	2268200	CIRCUIT BREAKER- 30AMP
14	403257	CENTER SECTION W/MAGNETS	69	2266000	BEARING BALL- STEEL (2 REQ'D)	123	2260601	WIRE CONNECTING- 10GA.
15	2006609	DECAL	70	2266115	BEARING CONE	124	2261207	WIRE HARNESS 5'
16	406460	O-RING	71	2261615	COLLAR (2 REQ'D)	125	2267500	CABLE ASSEMBLY- RIGHT 5'
17	406033	PLAIN END HOUSING	72	2263450	SCREW- 10-24 X 7/8" (2 REQ'D)	126	2267510	CABLE ASSEMBLY- LEFT 5'
18	406600	FLANGE BEARING (SERVICE ONLY)	73	2260264	COVER- CONTROL BOX	127	2265430	CABLE JACKET 5'
19	406461	SEAL	74	2372100	SCREW- 8-18 X 5/8" (4 REQ'D)	128	2265110	BOOT- CONTROL BOX
20	406471	SEAL- CUP	75	2265530	DECAL- COVER	129	2265115	BOOT- FOOT PEDAL BASE
21	401461	O-RING —THRU BOLT (2 REQ'D)	76	2260150	POINTER DISC TRANSLUCENT RED	130	2262113	SCREW- 8-18 X 1/2" (2 REQ'D)
22	403354	THRU BOLT (2 REQ'D)	77	2265800	DECAL- INDICATOR	131	2261900	BRACKET- CONDUIT
23	2069061	MOTOR ASSEMBLY	78	2262530	CONTROL BOX	132	2301310	SCREW- 8-18 X 1/2" (2 REQ'D)
24	2032063	TUBE- COMPOSITE 42"	79	2262109	SCREW-8-32 X 1/2" (3 REQ'D)	133	2263210	BRACKET- CONDUIT ADJUSTMENT
25	2061125	PROP (WEEDLESS WEDGE)	80	2267800	GEAR- INDICATOR (3 REQ'D)	134	2262720	SPRING- CONDUIT
26	2051700	LOCKWASHER-PROP	81	2262220	INDICATOR- DRIVE	135	2263460	SCREW- 1/4-20 X 2"
27	2053100	NUT-PROP	82	2261905	BRACKET/INDICATOR	136	2262650	PIN- CIRCUIT BREAKER RESET
28	2092600	PIN-DRIVE	83	2301310	SCREW- 8-18 X 1/2"	137	2262721	SPRING- RESET PIN
30	2881954	STD- BOWMOUNT ASSEMBLY	84	2263201	CLAMP- WIRE HARNESS MICRO	139	2263201	CLAMP-WIRE HARNESS
31	2264201	ARM- UPPER	85	2301310	SCREW- 8-18 X 1/2"	140	2256300	TIE WRAP- 5.5" BLACK
32	2265120	BUMPER- UPPER ARM	86	2375400	SHRINK TUBE- 1/4 OD X 1-3/4" (4 REQ'D)	141	2263201	CLAMP- WIRE HARNESS MICRO
33	2774310	ARM- LOWER ASSEMBLY	87	2355410	SHRINK TUBE- 3/8 OD X 2" (2 REQ'D)	142	2332103	SCREW- 6-20 X 3/8 (2 REQ'D)
*34	2254342	ARM- LOWER— ORDER 33 -INCL 34,40,45,46	88	2232360	PULLEY- CABLE DRUM	143	2260301	CONNECTING WIRE- SWITCH
35	2263900	MOTOR REST	89	2261730	WASHER- NYLON	144	2260311	CONNECTING WIRE- 19-1/4
36	2251942	BOW PLATE	90	2776203	TOP BEARING RACE ASSEMBLY INCLUDES 91,92	145	2260320	CONNECTING WIRE- 12"
37	2293801	TUBE LOCK	*91	2267805	PINION DRIVE	146	2266411	COVER PLATE AT98
*38	2264705	INSERT- HINGE BASE	*92	2266245	BEARING RACE- TOP	147	2302100	SCREW-6-20 X 2/8" (8 REQ'D)
39	2260506	HINGE- PIN	93	2263410	SCREW- 8-32 X 5/16" (2 REQ'D)	148	2265608	DECAL
40	2150400	PULL- GRIP	94	2992020	FOOT PEDAL ASSEMBLY- 5 SPEED	149	2994803	BAG ASSEMBLY (INCLUDES 150-153)
41	2236000	BEARING NYLINER (2 REQ'D)	95	2790002	FOOT PEDAL- PLUG ASSEMBLY	*150	2153501	BOLT-MOUNTING ORDER (4 REQ'D)
42	2303431	SCREW- 1/4-20 X 5/8" (4 REQ'D)	96	2263700	PUSH BUTTON- FOOT PEDAL	*151	2151728	WASHER- 5/16" ORDER (4 REQ'D)
43	2293511	BOLT- UPPER ARM (4 REQ'D)	97	2302732	SPRING- LOWER PEDAL	*152	2153100	NUT- 5/16" MOUNTING (4 REQ'D)
44	2293500	BUSHING- SHOULDER UPPER ARM (4 REQ'D)	98	2264020	SWITCH- MOMENTARY	*153	2301720	WASHER- RUBBER (6 REQ'D)
45	2152610	SPRING- PIN LOCKBAR	99	2266413	PLATE- TENSION SCREW	154	2261224	LEADWIRE- W/ RING TERMINALS
46	2233600	LOCK BAR- BOW MOUNT	100	2262114	SCREW- MOUNTING SWITCH (2 REQ'D)	155	2020700	RING TERMINALS (2 REQ'D)
47	2152700	SPRING- LOCKBAR	101	2233100	NUT- SWITCH MOUNT (2 REQ'D)			
48	2151700	WASHER- EYE SHAFT (2 REQ'D)	102	2264026	SWITCH- 5 SPEED			
49	2153600	EYE SHAFT	103	2261701	LOCKWASHER- STAR			
50	2771812	HINGE BASE ASSEMBLY- INCLUDES 38,51,54	104	2263105	NUT- HEX			
*51	2261811	HINGE BASE- ORDER 50	105	2261715	SPACER- SWITCH 5 SP MODELS			
52	2231570	SLEEVE ROLLER	106	2260170	KNOB- SPEED CONTROL 5 SPEED			
53	2230500	PIN-HINGE (BOW PLATE)	107	2263000	E-RING			
*54	2232350	EYELET-ROPE	108	2260730	CONNECTOR- 1/4 MALE			
55	2261821	HINGE DOOR	109	2332103	SCREW- 6-20 X 3/8"			

* This item is part of an assembly. This item cannot be sold separately due to machining and /or assembly that is required.

