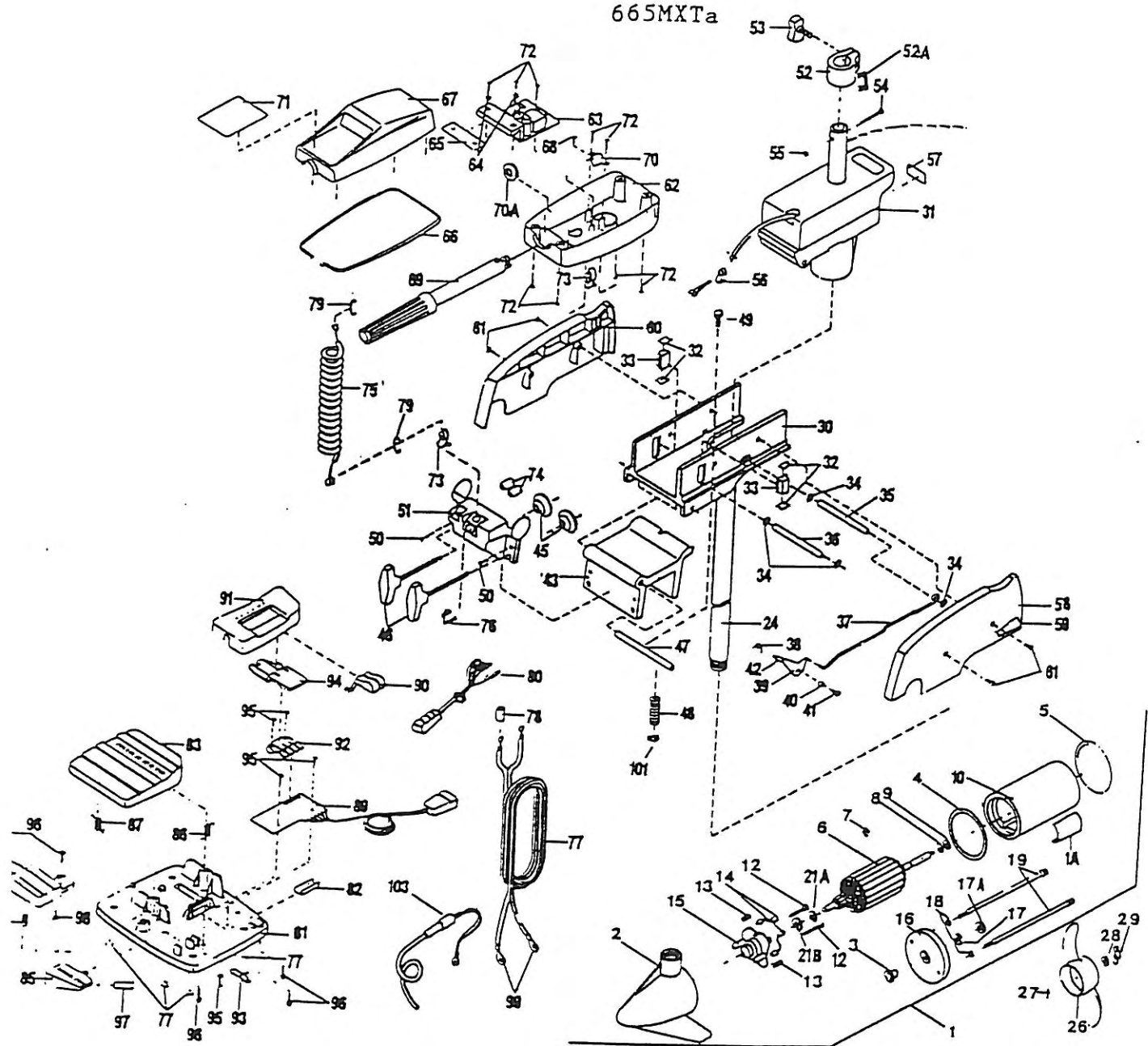


PARTS DIAGRAM

665MXTa



Model 665MXTa

REPLACEMENT PARTS

Item No.	Part No.	Description	Item No.	Part No.	Description
1	206-9043	Motor Assembly-Complete	53	201-1365	Collar Screw
1A	200-6609	Decal-Motor	54	233-1303	Screw
2	406-029	Brush End Housing	55	233-3101	Hex Nut
3	406-600	Flange Bearing	56	230-2935	Strain Relief
4	406-480	Gasket	57	230-5519	Decal-Steering Motor
5	406-460	O-Ring	58	235-3800	Sideplate-Left
6	405-205	Armature	59	235-5500	Decal-Sideplate (2 req'd.)
7	405-300	E-Ring	60	235-3900	Sideplate-Right
8	406-170	Steel Washer	61	230-3430	Screw (4 req'd.)
9	405-171	Thrust Washer	62	216-2544	Control Box
10	405-259	Center Section w/Magnets	63	235-4021	Control Board Assembly
12	406-341	Brush Plate Screw (2 req'd.)	64	230-1710	Washer-Insulating (2 req'd.)
12A	406-090	Brushholder	65	236-5105	Insulating Pad
13	406-082	Brush Spring (2 req'd.)	66	206-6940	Gasket-Cover
14	406-072	Brush (2 req'd.)	67	206-0253	Control Box Cover
15	406-405	Brush Plate w/Bearing	68	235-3402	Screw
16	406-035	Plain End Housing	69	235-0901	Handle Assembly
17	406-461	Seal (1 req'd.)	70	235-0030	Handle Stop
17A	406-471	Cup Seal	70A	201-0010	Outer Handle Bearing
18	401-462	Thru Bolt O-Ring (2 req'd.)	71	235-5635	Decal-Cover
19	405-352	Thru Bolt (2 req'd.)	72	201-2100	Screw (9 req'd.)
21A	403-010	Ball	73	233-2900	Strain Relief (2 req'd.)
21B	403-050	Thrust Disc	74	235-5410	Shrink Tube (2 req'd.)
25	203-2053	Tube—42"	75	235-1201	Coil Cord
26	206-1125	Propeller	76	201-2910	Strain Relief
27	209-2600	Drive Pin	77	235-0600	Lead Wire (Includes Battery Terminals)
28	205-1700	Prop Washer	78	206-5400	Wire Insulator (Lg.)
29	205-3100	Prop Nut	79	230-3001	Pig Ring (2 req'd.)
30	235-1903	Hinge Base	80	235-0701	Control Cord
31	230-1834	Drive Housing	81	230-4511	Foot Pedal Base
32	230-5110	Pivot Pad Support (4 req'd.)	82	230-8500	Wear Plate
33	230-5101	Pivot Pad (2 req'd.)	83	230-4516	Foot Pedal-Upper
34	201-3100	Speed nut (4 req'd.)	84	230-4520	Foot Pedal-Lower
35	230-0500	Latch Pin	85	230-7210	Lever-Mom/Con
36	230-0510	Pivot Pin	86	230-2730	Spring-Long/Upper Pedal
37	235-3600	Release Rod	87	230-2731	Spring-Short/Upper Pedal
37A	230-3110	Push Nut	88	230-2732	Spring-Lower Pedal
38	230-2700	Spring	89	230-4012	Control Board Assembly
39	230-3700	Release Lever	90	230-0120	Knob-Speed Selector
40	230-1700	Spacer-Release Lever	91	230-0121	Housing-Speed Selector
41	230-3430	Screw	92	230-2840	Actuator-Board
42	230-0100	Release Lever Knob	93	230-2841	Actuator-Mom/Con
43	235-1913	Hinge Bracket	94	230-2842	Actuator-Steering
45	201-1710	Clamp Screw Washer (2 req'd.)	95	230-2100	Screw #6-20 x 1/2 (5 req'd.)
46	201-1375	Clamp Screw (2 req'd.)	96	237-2100	Screw #8-18 x 1/4 (5 req'd.)
47	235-0500	Hinge Pin	97	230-6610	Decal
48	235-1500	Adjusting Spacer (9 req'd.)	98	233-5130	Bumper-Actuator
49	235-2100	Screw	99	209-0700	Ring Terminal (2 req'd.)
50	235-3401	Screw (2 req'd.)	100	299-4807	Bag Assembly
51	235-6502	Front Housing	*100A	230-5131	Rubber Bumper (6 req'd.)
52	203-1521	Collar Drive	101	235-3100	Nut-Jam
52A	203-2800	Tension Block	103	206-0310	Fused Ground Wire

*This item is part of an assembly. This item cannot be sold separately due to machining and/or assembly that is required.

RING DIAGRAM

665MXT

