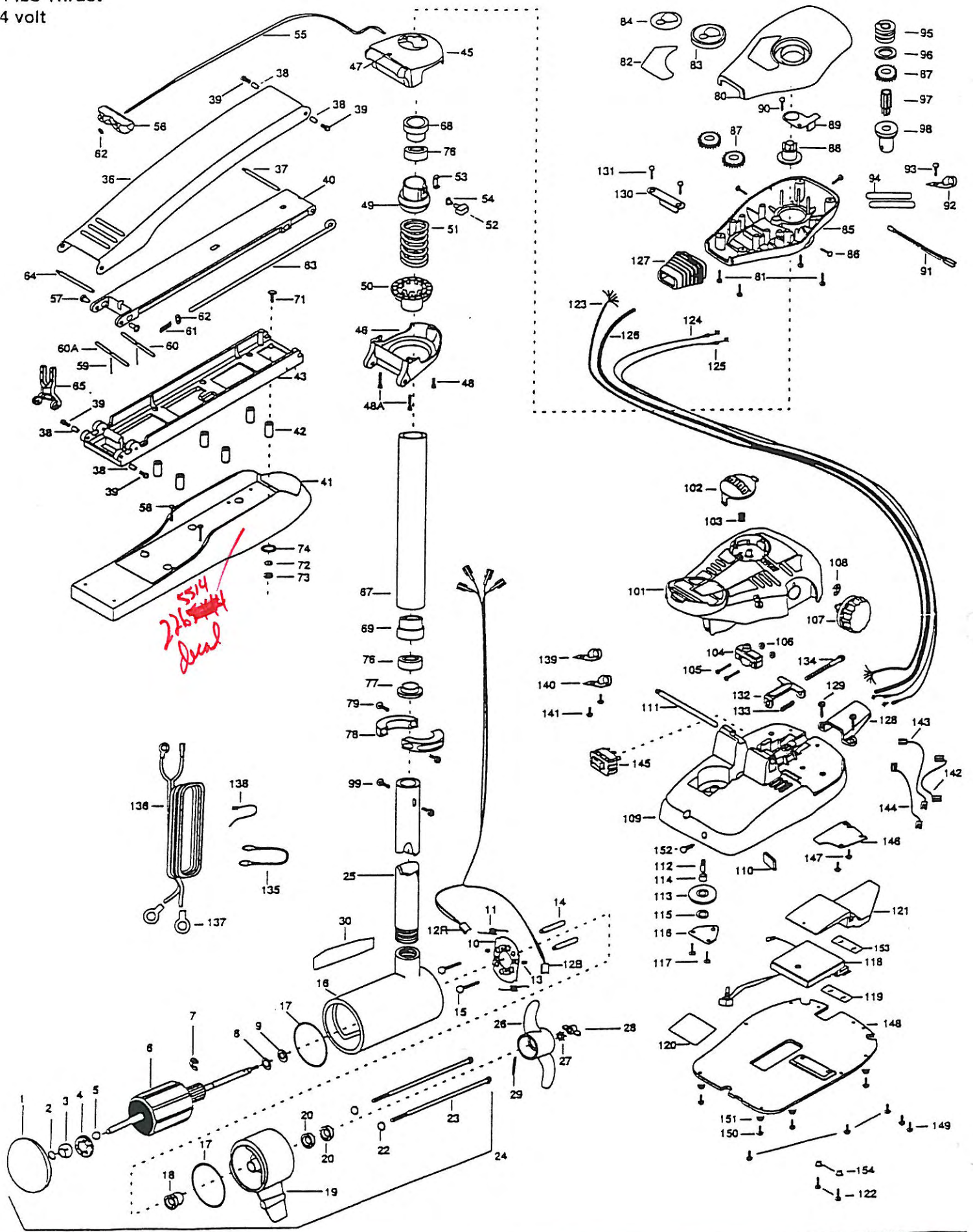


THRUST
4 lbs Thrust
24 volt



Numbers of your motor will be provided to provide the model and serial for any parts ordered from the MINN KOTA parts department, may be by cash, personal check, Discover Card MasterCard or VIS order, call 1-800-227-8433 or FAX 1-800-527-4464.

Ne pas oublier de fournir les numéros de Modèle et de Série de votre Moteur lorsque vous placez une commande. Employez toujours le numéro de pièce exact se trouvant sur la liste des pièces de remplacement.

para identificar o Centro de Serviço Autorizado. Não deixe de incluir o número do MODELO e o número da SÉRIE do seu motor ao pedir peças. Sempre use os números corretos das peças da lista de peças.

1	400024	PLAIN ENDBELL	57	2236000	BEARING NYLINER (2 REQ'D)	108	2283000	E-RING
2	406050	THRUST DISC	58	2283434	SCREW-8-18X1 (2 REQ'D)	*109	2284550	FOOT PEDAL BASE ASSEMBLY (INCL. 109,110,112)
3	408600	SPHERICAL BEARING	59	2152810	SPRING-PIN (LOCKWAF) (2 REQ'D)	*110	2268413	PLATE- TENSION SCREW
4	408301	BEARING RETAINER	60	2233800	LOCK BAR- BOW MOUNT	111	2280511	PIN-PIVOT
5	405010	BALL-STEEL	60A	2233802	LOCK BAR- REAR	*112	2280515	PIN-PULLEY-AXLE
6	410203	ARMATURE ASSEMBLY	81	2152700	SPRING-(LOCKBAR)	113	2282300	PULLEY (FOOT PEDAL)
7	409300	E-RING	82	2151700	WASHER-EYE SHAFT .582 OD	114	2260000	BEARING-PULLEY
8	409170	THRUST WASHER- STEEL (AS REQ'D)	83	2153803	EYE SHAFT (42" SHAFT)	115	2281705	WASHER-NYLATRON
9	409171	THRUST WASHER- NYLON (AS REQ'D)	84	2280508	HINGE-PIN, HEADLESS ZINC	118	2288400	COVER-PULLEY
10	409402	BRUSH PLATE ASSEMBLY	85	2293810	YOKE, MAXXUM MOUNT	117	2301310	SCREW-8-18 X 1/2 (2 REQ'D)
11	406083	BRUSH SPRING (2 REQ'D)	86	2992015	TUBE W/BEARING FACE- 42" SHAFT	118	2284011	CONTROL BOARD ASSEMBLY
12A	409071	BRUSH ASSEMBLY-RED 42"	*87	2272088	TUBE OUTER 18" -ORDER 88	119	2385108	INSULATING PAD- 1.1 X 2.75
12B	409072	BRUSH ASSEMBLY-BLK 42"	88	2288280	BEARING RACE	120	2385107	INSULATING PAD- 2.3 X 3.2
13	409343	SET SCREW- BRUSH	89	2288220	BEARING RACE-STEEL	121	2284018	HEAT SINK, MAXXUM FT
14	405151	BRUSH PLATE SPACER (2 REQ'D)	70	2994830	BAG ASSEMBLY-MAXXUM FW	122	2283434	SCREW-8-18 X 1 (2 REQ'D)
15	405341	BRUSH PLATE SCREW (2 REQ'D)	*71	2283431	SCREW 1/4-20 X 3.5 (8 REQ'D)-ORDER 70	123	2281217	WIRE HARNESS
16	400257	CENTER SECTION W/MAGNETS	*71A	2283435	SCREW 1/4-20 X 3.5 (2 REQ'D)-ORDER 70	124	2287500	CABLE ASSY-RIGHT (5')
17	400460	O RING (2 REQ'D)	*72	2281713	WASHER-1/4 FLAT (8 REQ'D)-ORDER 70	125	2287510	CABLE ASSY-LEFT (5')
18	400000	FLANGE BEARING (SERVICE ONLY)	*73	2283102	NUT-1/4-20 (8 REQ'D)-ORDER 70)	128	2285430	CABLE JACKET (5')
19	400033	BRUSH END HOUSING	*74	2301720	WASHER-MOUNTING, RUBBER (8 REQ'D)-ORDER 70	127	2285110	BOOT-CONTROL BOX
20	409481	SEAL (2 REQ'D)	75	2286810	DECAL-ON/OFF SWITCH	128	2285115	BOOT-FOOT PEDAL BASE
22	409482	O-RING - THRU BOLT (2 REQ'D)	78	2286000	BEARING BALL-STEEL (2 REQ'D)	129	2282113	SCREW-8-18 X 1/2 FT.PDL (2 REQ'D)
23	409352	THRU BOLT (2 REQ'D)	77	2286115	BEARING CONE	130	2281900	BRACKET-CONDUIT
24	2317032	MOTOR-ASSEMBLY 42"	78	2771815	COLLAR HALVES KIT	131	2301310	SCREW-8-18 X 1/2 (2 REQ'D)
25	2032083	TUBE- COMPOSITE 42"	79	2283450	SCREW-10-24 X 7/8 (2 REQ'D)	132	2283210	BRACKET-CONDUIT ADJUSTMENT
26	2331120	PROPELLER (W.WEDGE)	80	2280283	CONTROL BOX COVER-MAXXUM	133	2282720	SPRING-CONDUIT ADJUSTMENT
27	2091700	LOCKWASHER-PROP	81	2372100	SCREW-8-18 X 5/8 (4 REQ'D)	134	2283480	SCREW-1/4-20 X 2"
28	2003100	NUT-PROP	82	2285532	DECAL COVER, MAXXUM 74	135	2340810	CONNECTOR CABLE-(12", 4GA)
29	2002600	PIN-DRIVE	83	2280150	POINTER DISC TRNSLCNT RED	138	2281227	LEADWIRE -VARIABLE
30	2008601	DECAL-LOWER UNIT	84	2285800	DECAL-INDICATOR	137	2020700	TERMINAL RING, 3/8" (2 REQ'D)
35	2991875	MOUNT, BOW ASSEMBLY (42" SHAFT)	85	2282530	CONTROL BOX-PLASTIC	138	2258300	TIE WRAP-5.5" BLACK
36	2284208	ARM UPPER-FW (42" SHAFT)	86	2282108	SCREW-8-32 X 1/2 (3 REQ'D)	139	2283201	CLAMP WIRE HARNESS MICRO
37	2260507	HINGE PIN (THREADED)	87	2287800	GEAR-INDICATOR (3 REQ'D)	140	2283200	CLAMP-WIRE HARNESS
38	2293501	BUSHING (4 REQ'D)	88	2282220	INDICATOR-DRIVE	141	2332103	SCREW-8-20 X 3/8 (2 REQ'D)
39	2263500	BOLT, SHOULDER (4 REQ'D)	89	2281905	BRACKET/INDICATOR	142	2280318	CONNECTING WIRE (VAR.SP/D)
40	2774311	ARM LOWER FW (42" SHAFT)	90	2301310	SCREW-8-18 X 1/2	143	2280311	CONNECTING WIRE 18 1/4"
41	2999268	MOTOR REST ASSEMBLY (42" SHAFT)	91	2284015	LIGHT/INDICATOR	144	2280321	CONNECTING WIRE-VARIABLE
42	2281605	SPACER, MOTOR REST (8 REQ'D)	92	2283201	CLAMP WIRE HARNESS	145	2254031	SWITCH-MOM/OFF/COM
43	2251982	BOW PLATE (42" SHAFT)	93	2301310	SCREW-8-18 X 1/2	148	2286412	SWITCH PLATE, FT PEDAL
44	2271935	BRACKET ASSEMBLY (INCL 45-54)	94	2355410	SHRINK TUBE-3/8 CD X 2" (2 REQ'D)	147	2332103	SCREW-8-20 X 3/8 (2 REQ'D)
*45	2261937	BRACKET BASE-TOP	95	2232380	PULLEY-CABLE DRUM	148	2284510	BOTTOM PLATE, MAXXUM
*46	2261927	BRACKET BASE BOTTOM	96	2281730	WASHER-NYLON	149	2303412	SCREW-8-20 X 5/8 (5 REQ'D)
*47	2232351	EYELET-ROPE	*97	2287805	PINION DRIVE	150	2283455	SCREW #12-14X1/2 (4 REQ'D)
*48	2283402	SCREW 1/4-20 X 3/4	*98	2288248	TOP BEARING RACE	151	2285128	BUMBER PAD, FOOT PEDAL (4 REQ'D)
*48A	2283420	BOLT 1/4-20 X 2 (2 REQ'D)	99	2283410	SCREW-8-32 X 5/16 (2 REQ'D)	152	2282851	PUSH PIN
*49	2281620	SPRING-SLEEVE UPPER	100	2992023	FOOT PEDAL ASSEMBLY	153	2285105	INSULATING PAD
*50	2281630	SPRING SLEEVE LWR	101	2790002	FOOT PEDAL/PLUG ASSEMBLY	154	2281712	SHOULDR WASHER (2 REQ'D)
*51	2282702	SPRING, BOWGUARD, NIK PL	102	2283700	PUSH-BUTTON, FOOT PEDAL			
62	2011385	SCREW-TENSION/NEW KNOB	103	2302732	SPRING-LOWER PEDAL			
*53	2282800	TENSION BLOCK -ALUMINUM	104	2284023	SWITCH-SEALED ASSEMBLY			
*54	2283100	NUT-1/4-20 INSERT	105	2282114	SCREW-MOUNTING/SWITCH (2 REQ'D)			
55	2251801	ROPE- 40"	108	2233100	NUT-SWITCH MOUNT (2 REQ'D)			
58	2150400	PULL-GRIP	107	2280180	KNOB-SPEED CONTROL			

This item is part of an assembly. This item cannot be sold separately due to machining and/or assembly that is required.

WIRING DIAGRAM

