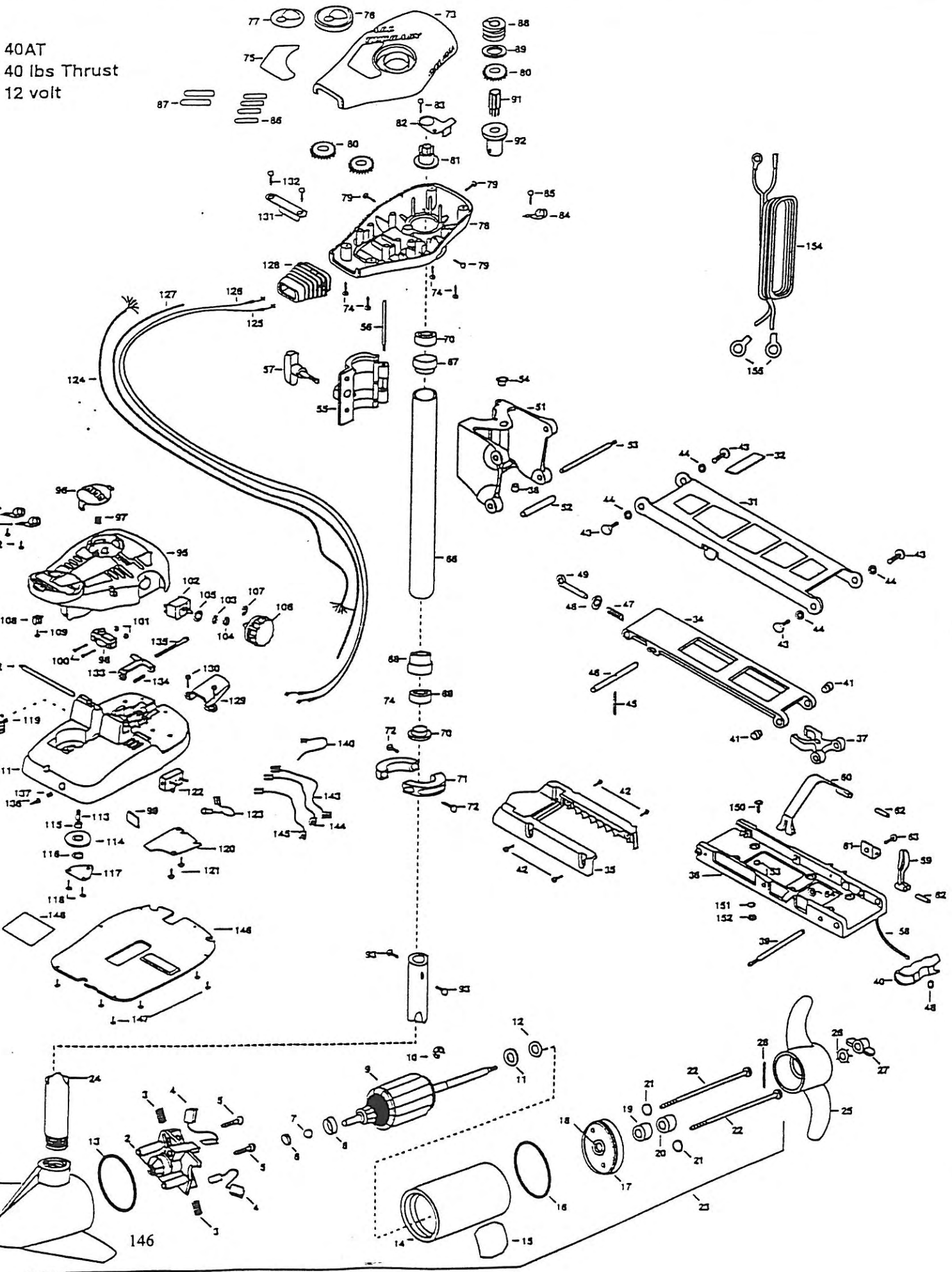


40AT
40 lbs Thrust
12 volt



Any parts ordered from the MINN KOTA parts department, may be by cash, personal check, Discover Card, MasterCard or VISA
 order, call 1-800-227-8433 or FAX 1-800-527-4484.

of votre Moteur lorsque vous placez une commande.
 Employez le numéro de pièce exact se trouvant sur la liste des pièces de remplacement.

nao deixe de incluir o número do MODELO e o número da SÉRIE do seu motor ao pedir peças. Sempre use os números corretos das peças da lista da peça

PARTS LIST

1	406027	BRUSH END HOUSING	59	2267200	LATCH LEVER	118	2261705	WASHER- NYLATRON
2	406408	BRUSH PLATE ASSEMBLY	60	2263800	STRAP- HOLD DOWN	117	2268400	COVER- PULLEY
3	406084	BRUSH SPRING (2 REQ'D)	61	2261910	BRACKET- HOLD DOWN STRAP	118	2301310	SCREW- 8-18 X 1/2" (2 REQ'D)
4	406074	BRUSH ASSEMBLY (2 REQ'D)	62	2280500	PIN- ROLL LATCH LEVER (2 REQ'D)	119	2254031	SWITCH- MOM/OFF/CON
5	406341	BRUSH PLATE SCREW (2 REQ'D)	63	2263440	SCREW- 10-24 X 3/4"	120	2286412	SWITCH PLATE
6	403050	THRUST DISC	64	2333101	NUT- HEX	121	2332103	SCREW- 6-20 X 3/8 (2 REQ'D)
7	403010	BALL	65	2992015	TUBE W/BEARING RACE ASSEMBLY 18"	122	2288200	CIRCUIT BREAKER- 30AMP
8	406090	BRUSH HOLDER	66	2272068	TUBE OUTER- 18" ORDER 68	123	2260601	WIRE CONNECTING- 10GA.
9	405205	ARMATURE ASSEMBLY	67	2286260	BEARING- RACE	124	2261207	WIRE HARNESS 5'
10	405300	E-RING	68	2268220	BEARING- RACE STEEL	125	2287500	CABLE ASSEMBLY- RIGHT 5'
11	408170	THRUST WASHER- STEEL (AS REQ'D)	69	2286000	BEARING BALL- STEEL (2 REQ'D)	126	2267510	CABLE ASSEMBLY- LEFT 5'
12	405171	THRUST WASHER- NYLON (AS REQ'D)	70	2268115	BEARING CONE	127	2265430	CABLE JACKET 5'
13	403460	O-RING	71	2281815	COLLAR (2 REQ'D)	128	2265110	BOOT- CONTROL BOX
14	405259	CENTER SECTION W/ MAGNETS	72	2263450	SCREW- 10-24 X 7/8" (2 REQ'D)	129	2285115	BOOT- FOOT PEDAL BASE
15	2006609	DECAL- MOTOR	73	2260284	COVER- CONTROL BOX	130	2282113	SCREW- 8-18 X 1/2" (2 REQ'D)
16	408460	O-RING	74	2301310	SCREW- 8-18 X 1/2" (4 REQ'D)	131	2281900	BRACKET- CONDUIT
17	406035	PLAIN END HOUSING	75	2265530	DECAL- COVER	132	2301310	SCREW- 8-18 X 1/2" (2 REQ'D)
18	406600	FLANGE BEARING (SERVICE ONLY)	76	2260150	POINTER DISC TRANSLUCENT RED	133	2283210	BRACKET- CONDUIT ADJUSTMENT
19	406481	SEAL	77	2265800	DECAL- INDICATOR	134	2262720	SPRING- CONDUIT
20	406471	SEAL- CUP	78	2262530	CONTROL BOX	135	2283460	SCREW- 1/4-20 X 2"
21	401462	O-RING- THRU BOLT (2 REQ'D)	79	2262109	SCREW- 8-32 X 1/2" (3 REQ'D)	138	2282650	PIN- CIRCUIT BREAKER RESET
22	405352	THRU BOLT (2 REQ'D)	80	2287800	GEAR- INDICATOR (3 REQ'D)	137	2282721	SPRING- RESET PIN
23	2089041	MOTOR- ASSEMBLY	81	2262220	INDICATOR- DRIVE	139	2283200	CLAMP- WIRE HARNESS
24	2032083	TUBE- COMPOSITE 42"	82	2281905	BRACKET/INDICATOR	140	2256300	TIE WRAP- 5.5" BLACK
25	2081125	PROP- WEEDLESS WEDGE	83	2301310	SCREW- 8-18 X 1.2"	141	2283201	CLAMP- WIRE HARNESS
26	2051700	LOCKWASHER- PROP	84	2283201	CLAMP- WIRE HARNESS	142	2332103	SCREW- 8-20 X 3/8 (2 REQ'D)
27	2053100	NUT- PROP	85	2301310	SCREW- 8-18 X 1.2"	143	2260301	CONNECTING WIRE- SWITCH
28	2092600	PIN- DRIVE	86	2375400	SHRINK TUBE- 1/4 OD X 1-3/4" (4 REQ'D)	144	2260311	CONNECTING WIRE- 19-1/4
30	2881954	STD- BOWMOUNT ASSEMBLY	87	2355410	SHRINK TUBE- 3/8 OD X 2" (2 REQ'D)	145	2280320	CONNECTING WIRE- 12"
31	2264201	ARM- UPPER	88	2232380	PULLEY- CABLE DRUM	146	2286410	COVER PLATE
32	2265120	BUMPER- UPPER ARM	89	2261730	WASHER- NYLON	147	2332103	SCREW- 6-20 X 3/8" (6 REQ'D)
33	2774310	ARM- LOWER ASSEMBLY	90	2776203	TOP BEARING RACE ASSEMBLY INCLUDES 91,92	148	2285608	DECAL
34	2254342	ARM- LOWER— ORDER 33 -INCL 34,40,45,48	*91	2287805	PINION DRIVE	149	2994803	BAG ASSEMBLY (INCLUDES 150-153)
35	2263900	MOTOR REST	*92	2288245	BEARING RACE- TOP	*150	2153501	BOLT-MOUNTING ORDER (4 REQ'D)
36	2251942	BOW PLATE	93	2283410	SCREW- 8-32 X 5/16" (2 REQ'D)	*151	2151728	WASHER- 5/16" ORDER (4 REQ'D)
37	2293801	TUBE LOCK	*94	2992020	FOOT PEDAL ASSEMBLY- 5 SPEED	*152	2153100	NUT- 5/16" MOUNTING (4 REQ'D)
*38	2264705	INSERT- HINGE BASE	95	2790002	FOOT PEDAL- PLUG ASSEMBLY	*153	2301720	WASHER- RUBBER (6 REQ'D)
39	2260506	HINGE- PIN	96	2283700	PUSH BUTTON- FOOT PEDAL	154	2261224	LEADWIRE- W/ RING TERMINALS
40	2150400	PULL- GRIP	97	2302732	SPRING- LOWER PEDAL	155	2090700	RING TERMINALS (2 REQ'D)
41	2236000	BEARING NYLINER (2 REQ'D)	98	2284020	SWITCH- MOMENTARY			
42	2303431	SCREW- 1/4-20 X 5/8" (4 REQ'D)	*99	2268413	PLATE- TENSION SCREW			
43	2293511	BOLT- UPPER ARM (4 REQ'D)	100	2282114	SCREW- MOUNTING SWITCH (2 REQ'D)			
44	2293500	BUSHING- SHOULDER UPPER ARM (4 REQ'D)	101	2233100	NUT- SWITCH MOUNT (2 REQ'D)			
45	2152610	SPRING- PIN LOCKBAR	102	2284028	SWITCH- 5 SPEED			
46	2233600	LOCK BAR- BOW MOUNT	103	2281701	LOCKWASHER- STAR			
47	2152700	SPRING- LOCKBAR	104	2283105	NUT- HEX			
48	2151700	WASHER- EYE SHAFT (2 REQ'D)	105	2281715	SPACER- SWITCH 5 SP MODELS			
49	2153800	EYE SHAFT	106	2260170	KNOB- SPEED CONTROL 5 SPEED			
50	2771812	HINGE BASE ASSEMBLY- INCLUDES 38,51,54	107	2283000	E-RING			
*51	2261811	HINGE BASE- ORDER 50	108	2260730	CONNECTOR- 1/4 MALE			
52	2231570	SLEEVE ROLLER	109	2332103	SCREW- 6-20 X 3/8"			
53	2230500	PIN-HINGE (BOW PLATE)	110	2774550	FT PEDAL BASE ASSEMBLY INCLUDES 111,113			
*54	2232350	EYELET-ROPE	*111	2284550	FOOT PEDAL BASE			
55	2261821	HINGE DOOR	112	2260511	PIN- PIVOT FOOT PEDAL			
56	2262640	PIN-HINGE DOOR	*113	2260515	PIN- PULLEY- AXLE			
57	2260180	KNOB- HINGE COVER	114	2282300	PULLEY- FOOT PEDAL			
58	2251800	ROPE- 31"	115	2260000	BEARING- PULLEY			

404T

This item is part of an assembly. This item cannot be sold separately due to machining and/or assembly that is required.

