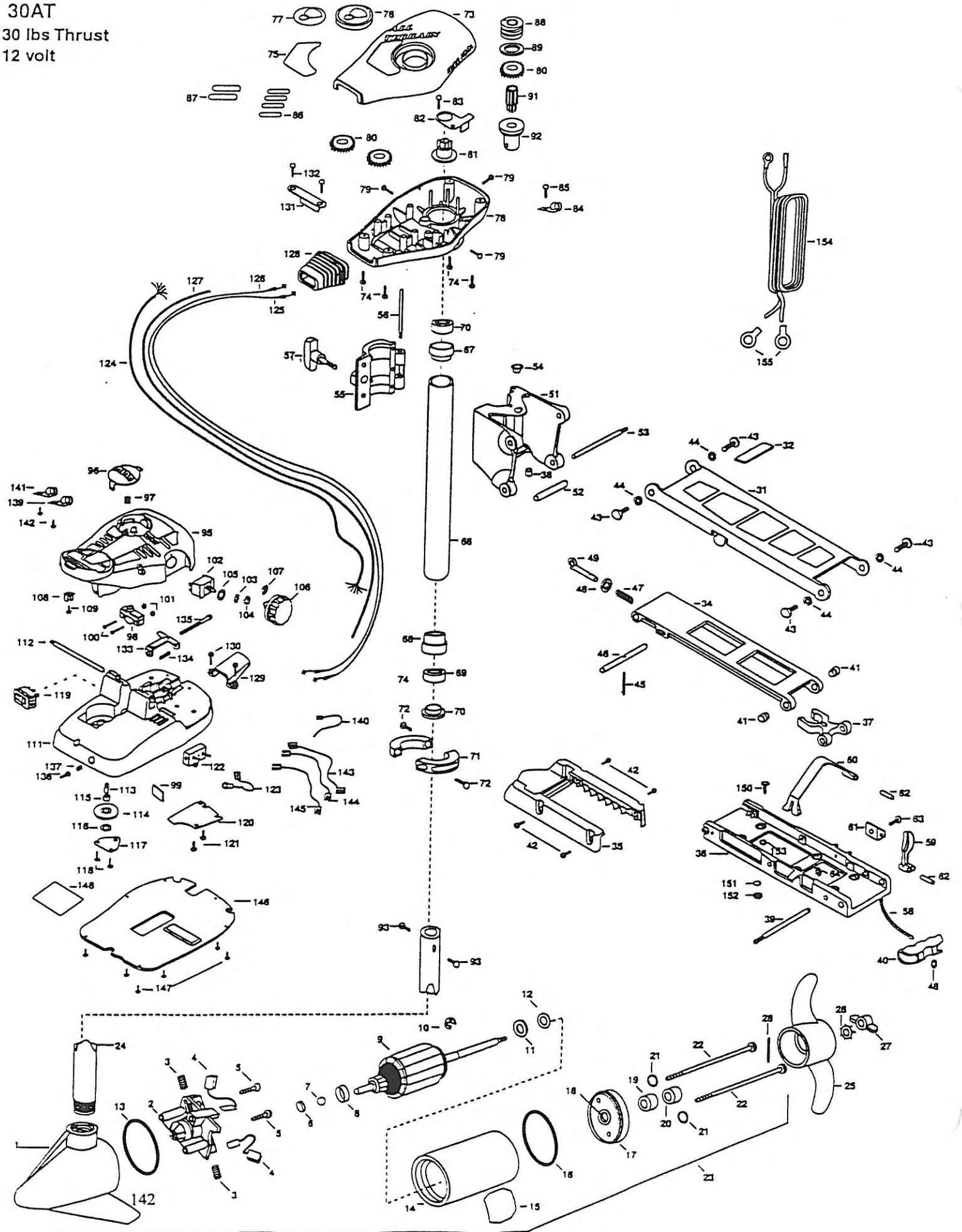


30AT
30 lbs Thrust
12 volt



for any parts ordered from MasterCard, VISA, or U.S. ordering parts. Please use the correct part numbers from the parts list. Payment in MINN KOTA parts department, may be by cash, personal check, Discover Card or D.D. To order, call 1-800-227-8433 or FAX 1-800-527-4484.

Né pas oublier de fournir les numéros de Modèle et de Série de votre Moteur lorsque vous placez une commande. Employez toujours le numéro de pièce exact se trouvant sur la liste des pièces de remplacement.

prezentar o Centro de Serviço Autorizado MINN KOTA. Não deixe de incluir o número do MODELO e o número de SÉRIE do seu motor ao pedir peças. Se usar os números corretos das peças da lista de peças.

1	403025	BRUSH END HOUSING W/ COIL	56	2262840	PIN-HINGE DOOR	110	2774550	FT PEDAL BASE ASSEMBLY INCLUDES 111,113
2	408405	BRUSH PLATE ASSEMBLY	57	2260180	KNOB- HINGE COVER	*111	2284500	FOOT PEDAL BASE
3	406081	BRUSH SPRING (2 REQ'D)	58	2251800	ROPE- 31"	112	2260511	PIN- PIVOT FOOT PEDAL
4	406072	BRUSH ASSEMBLY (2 REQ'D)	59	2287200	LATCH LEVER	*113	2260515	PIN- PULLEY- AXLE
5	406341	BRUSH PLATE SCREW (2 REQ'D)	60	2283800	STRAP- HOLD DOWN	114	2262300	PULLEY- FOOT PEDAL
6	403050	THRUST DISK	61	2281910	BRACKET- HOLD DOWN STRAP	115	2260000	BEARING- PULLEY
7	403010	BALL- STEEL	62	2260500	PIN- ROLL LATCH LEVER (2 REQ'D)	116	2261705	WASHER- NYLATRON
8	406090	BRUSH HOLDER	63	2283440	SCREW- 10-24 X 3/4"	117	2266400	COVER- PULLEY
9	403207	ARMATURE ASSEMBLY	64	2333101	NUT- HEX	118	2301310	SCREW- 8-18 X 1/2" (2 REQ'D)
10	405300	E-RING	65	2892015	TUBE W/BEARING RACE ASSEMBLY 18"	119	2254031	SWITCH- MOM/OFF/CON
11	408170	THRUST WASHER- STEEL (AS REQ'D)	66	2272068	TUBE OUTER- 18" ORDER 88	120	2266412	SWITCH PLATE
12	405171	THRUST WASHER- NYLON (AS REQ'D)	67	2266280	BEARING- RACE	121	2332103	SCREW 6-20 X 3/8 (2 REQ'D)
13	403460	O-RING	68	2266220	BEARING- RACE STEEL	122	2288200	CIRCUIT BREAKER- 30AMP
14	403257	CENTER SECTION W/MAGNETS	69	2286000	BEARING BALL- STEEL (2 REQ'D)	123	2260601	WIRE CONNECTING- 10GA.
15	2006609	DECAL	70	2268115	BEARING CONE	124	2281207	WIRE HARNESS 5'
16	408460	O-RING	71	2281815	COLLAR (2 REQ'D)	125	2287500	CABLE ASSEMBLY- RIGHT 5'
17	406033	PLAIN END HOUSING	72	2283450	SCREW- 10-24 X 7/8" (2 REQ'D)	126	2287510	CABLE ASSEMBLY- LEFT 5'
18	408600	FLANGE BEARING (SERVICE ONLY)	73	2280264	COVER- CONTROL BOX	127	2265430	CABLE JACKET 5'
19	406481	SEAL	74	2301310	SCREW- 8-18 X 1/2" (4 REQ'D)	128	2285110	BOOT- CONTROL BOX
20	406471	SEAL- CUP	75	2265530	DECAL- COVER	129	2285115	BOOT- FOOT PEDAL BASE
21	401481	O-RING — THRU BOLT (2 REQ'D)	76	2260150	POINTER DISC TRANSLUCENT RED	130	2262113	SCREW- 8-18 X 1/2" (2 REQ'D)
22	403354	THRU BOLT (2 REQ'D)	77	2285800	DECAL- INDICATOR	131	2281900	BRACKET- CONDUIT
23	2069081	MOTOR-ASSEMBLY	78	2282530	CONTROL BOX	132	2301310	SCREW- 8-18 X 1/2" (2 REQ'D)
24	2032083	TUBE-COMPOSITE 42"	79	2282109	SCREW-8-32 X 1/2" (3 REQ'D)	133	2283210	BRACKET- CONDUIT ADJUSTMENT
25	2081125	PROP (WEEDLESS WEDGE)	80	2287800	GEAR- INDICATOR (3 REQ'D)	134	2282720	SPRING- CONDUIT
26	2051700	LOCKWASHER-PROP	81	2282220	INDICATOR- DRIVE	135	2283460	SCREW- 1/4-20 X 2"
27	2053100	NUT-PROP	82	2281905	BRACKET/INDICATOR	136	2282650	PIN- CIRCUIT BREAKER RESET
28	2082600	PIN-DRIVE	83	2301310	SCREW- 8-18 X 1/2"	137	2282721	SPRING- RESET PIN
29	2881854	STD- BOWMOUNT ASSEMBLY	84	2283201	CLAMP- WIRE HARNESS	138	2283201	CLAMP-WIRE HARNESS
30	2284201	ARM- UPPER	85	2301310	SCREW- 8-18 X 1/2"	139	2258300	TIE WRAP- 5.5" BLACK
31	2285120	BUMPER- UPPER ARM	86	2375400	SHRINK TUBE- 1/4 OD X 1-3/4" (4 REQ'D)	140	2283200	CLAMP- WIRE HARNESS
32	2774310	ARM- LOWER ASSEMBLY	87	2355410	SHRINK TUBE- 3/16 OD X 2" (2 REQ'D)	141	2332103	SCREW- 6-20 X 3/8 (2 REQ'D)
33	2254342	ARM- LOWER— ORDER 33 -INCL 34,40,45,48	88	2232360	PULLEY- CABLE DRUM	142	2260301	CONNECTING WIRE- SWITCH
34	2263900	MOTOR REST	89	2281730	WASHER- NYLON	143	2280311	CONNECTING WIRE- 19-1/4
35	2251842	BOW PLATE	90	2778203	TOP BEARING RACE ASSEMBLY INCLUDES 91,92	144	2260320	CONNECTING WIRE- 12"
36	2293801	TUBE LOCK	*91	2267805	PINION DRIVE	145	2284440	COVER PLATE <i>2266411</i>
37	2284705	INSERT- HINGE BASE	*92	2268245	BEARING RACE- TOP	146	2332103	SCREW-8-20 X 3/8" (8 REQ'D)
38	2260508	HINGE- PIN	93	2283410	SCREW- 8-32 X 5/16" (2 REQ'D)	147	2265808	DECAL
39	2150400	PULL- GRIP	94	2892020	FOOT PEDAL ASSEMBLY- 5 SPEED	148	2894803	BAG ASSEMBLY (INCLUDES 150-153)
40	2236000	BEARING NYLINER (2 REQ'D)	95	2790002	FOOT PEDAL- PLUG ASSEMBLY	*150	2153501	BOLT-MOUNTING ORDER (4 REQ'D)
41	2303431	SCREW- 1/4-20 X 5/8" (4 REQ'D)	96	2283700	PUSH BUTTON- FOOT PEDAL	*151	2151728	WASHER- 5/16" ORDER (4 REQ'D)
42	2293511	BOLT- UPPER ARM (4 REQ'D)	97	2302732	SPRING- LOWER PEDAL	*152	2153100	NUT- 5/16" MOUNTING (4 REQ'D)
43	2293500	BUSHING- SHOULDER UPPER ARM (4 REQ'D)	98	2284020	SWITCH- MOMENTARY	*153	2301720	WASHER- RUBBER (8 REQ'D)
44	2152810	SPRING- PIN LOCKBAR	99	2268413	PLATE- TENSION SCREW	154	2281224	LEADWIRE- W/ RING TERMINALS
45	2233600	LOCK BAR- BOW MOUNT	100	2282114	SCREW- MOUNTING SWITCH (2 REQ'D)	155	2090700	RING TERMINALS (2 REQ'D)
46	2152700	SPRING- LOCKBAR	101	2233100	NUT- SWITCH MOUNT (2 REQ'D)			
47	2151700	WASHER- EYE SHAFT (2 REQ'D)	102	2284028	SWITCH- 6 SPEED			
48	2153600	EYE SHAFT	103	2281701	LOCKWASHER- STAR			
49	2771812	HINGE BASE ASSEMBLY- INCLUDES 38,51,54	104	2283105	NUT- HEX			
50	2281811	HINGE BASE- ORDER 50	105	2281715	SPACER- SWITCH 5 SP MODELS			
51	2231570	SLEEVE ROLLER	106	2280170	KNOB- SPEED CONTROL 5 SPEED			
52	2230500	PIN-HINGE (BOW PLATE)	107	2283000	E-RING			
53	2232350	EYELET-ROPE	108	2260730	CONNECTOR- 1/4 MALE			
54	2281821	HINGE DOOR	109	2332103	SCREW- 8-20 X 3/8"			

* This item is part of an assembly. This item cannot be sold separately due to machining and/or assembly that is required.

143

PARTS LIST

30 AT

