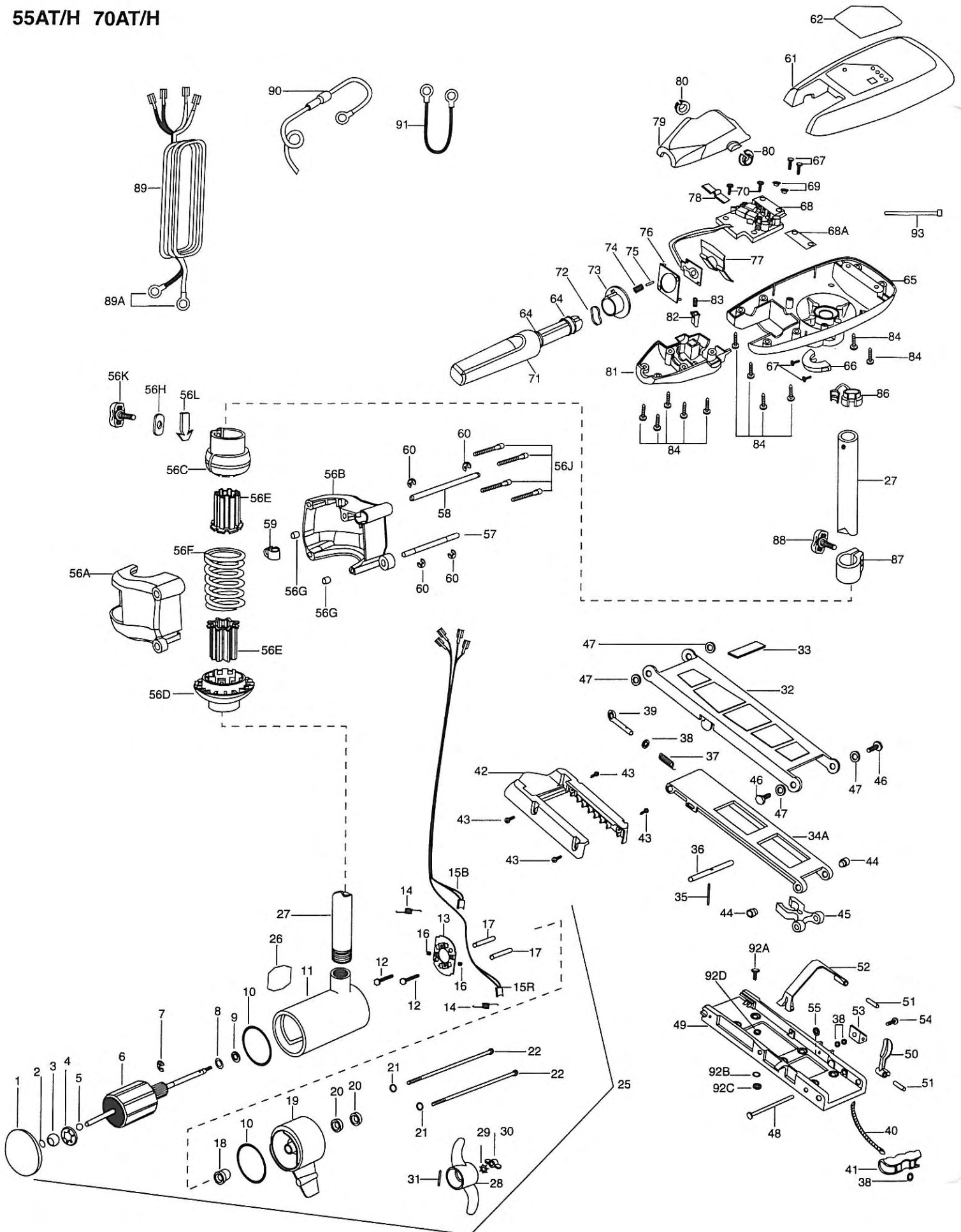


55AT/H 70AT/H



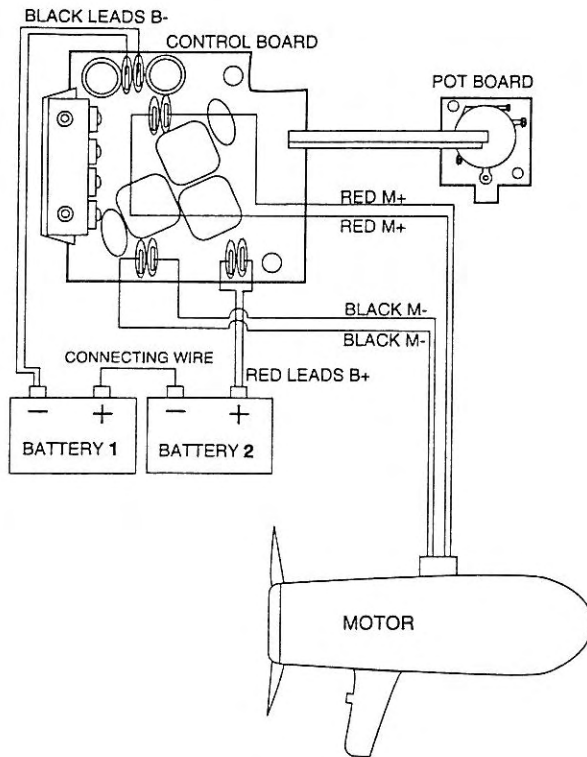
In the U.S.A., replacement parts may be ordered directly from MINN KOTA Parts Dept., JWA North America, 1531 E. Madison Avenue, Mankato, Minnesota 56001. In Canada, parts may be ordered from any of the Canadian Authorized Service Centers shown on the enclosed list. Be sure to provide the MODEL and SERIAL numbers of your motor when ordering parts. Please use the correct part numbers from the parts list. Payment for any parts ordered from the MINN KOTA parts department, may be by cash, personal check, MasterCard, VISA, or UPS C.O.D. To order, call 1-800-227-6433 or FAX 1-800-527-4464.

Hors de États-Unis, veuillez vous reporter à la liste ci-jointe pour le Centre de Service Agréé MINN KOTA le plus proche. Ne pas oublier de fournir les numéros de Modèle et de Série de votre Moteur lorsque vous placez une commande. Employez toujours le numéro de pièce exact se trouvant sur la liste des pièces de remplacement.

Fora da América do Norte, queira consultar a lista anexa para identificar o Centro de Serviço Autorizado MINN KOTA. Não deixe de incluir o número do MODELO e o número de SÉRIE do seu motor ao pedir peças. Sempre use os números corretos das peças da lista de peças.

Item	Part No.	Description	Item	Part No.	Description	Item	Part No.	Description
1	409-024	Front Endbell	35	215-2610	Spring Pin	66	206-1510	Collar- Control Box
2	406-050	Thrust Disc	36	223-3600	Lock Bar	67	237-2100	Screw 8-18x5/8 (4 req'd)
3	409-600	Spherical Bearing	37	215-2700	Spring	68	233-4005	Control Board Assembly (55AT/H)
4	409-301	Bearing Retainer	38	215-1700	Washer- Eye Shaft (4 req'd)	68	234-4005	Control Board Assembly (70AT/H)
5	405-010	Ball Bearing	39	215-3600	Eye Shaft	68A	236-5105	Insulating Pad
6	410-202	Armature Assembly 55AT/H	40	225-1600	Rope	69	230-1710	Washer- Insulated (2 req'd)
6	410-203	Armature Assembly 70AT/H	41	215-0400	Pull Grip	70	230-1310	Screw 8-18x1/2 (2 req'd)
7	409-300	E-Ring	42	226-3900	Motor Rest	71	299-0915	Handle Assembly
8	409-170	Thrust Washer- Steel (as req'd)	43	230-3431	Screw 1/4-20x5/8 (4 req'd)	72	230-2741	Spring- Cam
9	409-171	Thrust Washer- Nylatron (as req'd)	44	223-6000	Bearing- Nyliner (2 req'd)	73	230-2850	Actuator- Cam
10	409-460	O-Ring (2 req'd)	45	229-3801	Tube Lock	74	230-2740	Spring- Actuator
11	409-257	Center Section w/Magnets	46	229-3511	Bolt- Upper Arm (2 req'd)	75	230-2600	Pin- Actuator
12	405-341	Brush Plate Screw (2 req'd)	47	229-3500	Bushing-Shoulder (4 req'd)	76	230-2851	Actuator- Forward/Reverse
13	409-401	Brush Plate Assembly	48	226-0506	Pin-Headless	77	230-2743	Spring- Detent
14B	406-083	Brush Spring (2 req'd)	49	225-1941	Bow Plate	78	230-2742	Spring- Detent (Off)
14B	409-072	Brush Assembly- Black (42")	50	226-7200	Latch Lever	79	206-0411	Handle- Top Half
14R	409-074	Brush Assembly- Black (48")	51	226-0500	Pin- Roll Latch Lever (2 req'd)	80	206-0005	Bearing- Handle Pivot (2 req'd)
14R	409-071	Brush Assembly- Red (42")	52	226-3801	Strap- Hold Down	81	206-0415	Handle- Lower Half
15	409-073	Brush Assembly- Red (48")	53	226-1910	Bracket- Hold Down Strap	82	230-3720	Release Button
16	409-343	Brush Set Screw (2 req'd)	54	226-3442	Screw 10-24x7/8	83	230-2745	Spring- Release Button
17	405-151	Brush Plate Spacer (2 req'd)	55	233-3101	Nut- Hex	84	230-3412	Screw 6-20x5/8 (11 req'd)
18	409-000	Flange Bearing	56	277-1921	BowGuard Assembly (56A— 56L)	86	233-2900	Strain Relief
19	409-033	Brush End Housingl	56*A	226-1921	Bracket Base- Left	87	203-1520	Collar- Depth
20	409-461	Seal (2 req'd)	56*B	226-1931	Bracket Base- Right	88	201-1365	Screw- Collar
21	409-462	O-Ring- Thru Bolt (2 req'd)	56*C	226-1520	Spring Sleeve- Upper	89	233-0600	Leadwire- w/ Ring Terminals
22	409-352	Thru Bolt (2 req'd)	56*D	226-1530	Spring Sleeve- Lower	89A	209-0700	Replacement Ring Terminals (2 req'd)
25	233-7070	Motor & Tube Assembly (55AT/ H-42")	56*E	226-4700	Insert Tube (2 req'd)	90	206-0310	Fused Ground Wire
25	233-7071	Motor & Tube Assembly (55AT/ H-48")	56*F	226-2700	Spring- Breakaway	91	206-0310	Connector Cable- 24v only (70AT/H)
25	231-7030	Motor & Tube Assembly (70AT/H-42")	56*G	226-7300	Bushing- Dowel (2 req'd)	92	299-4811	Bag Assembly (92A — 92D)
25	231-7031	Motor & Tube Assembly (70AT/H-48")	56H	226-3100	Nut- Insert 1/4-20	92*A	215-3501	Mounting Bolt (6 req'd)
26	200-6609	Decal	56*J	226-3470	Screw 1/4-20x1-3/4 (4 req'd)	92*B	215-3100	Mounting Nut (6 req'd)
27	203-2053	Tube (42")	56K	201-1385	Screw- Tension	92*C	215-1726	Flat Washer (6 req'd)
27	203-2054	Tube (48" Optional)	56L	226-2800	Tension Block	92*D	230-1720	Mounting Washer- Rubber (6 req'd)
28	233-1120	Propeller	57	226-0530	Hinge Pin- Lower	93	225-6300	Tie Wrap
29	209-1700	Lockwasher	58	226-0520	Hinge Pin- Upper			
30	209-3100	Nut- Prop	59	226-2310	Guide- Rope			
31	209-2600	Pin- Drive	60	226-3010	E-Ring (4 req'd)			
	299-1958	Bow Mount Assembly (32 — 60)	61	218-0210	Control Box Cover			
32	226-4201	Arm- Upper	62	218-5603	Decal- Cover (55AT/H)			
33	226-5120	Bumper	62	218-5604	Decal- Cover (70AT/H)			
34	277-4304	Arm- Lower Assembly (34A — 41+ 59)	64	206-0000	Handle Bearing (2 req'd)			
34*A	225-4341	Arm- Lower (order item 34)	65	206-2582	Control Box			

* This item is part of an assembly. This item cannot be sold separately due to machining and /or assembly that is required.



RT70/B
70AT/H

RT55/B
55AT/H

