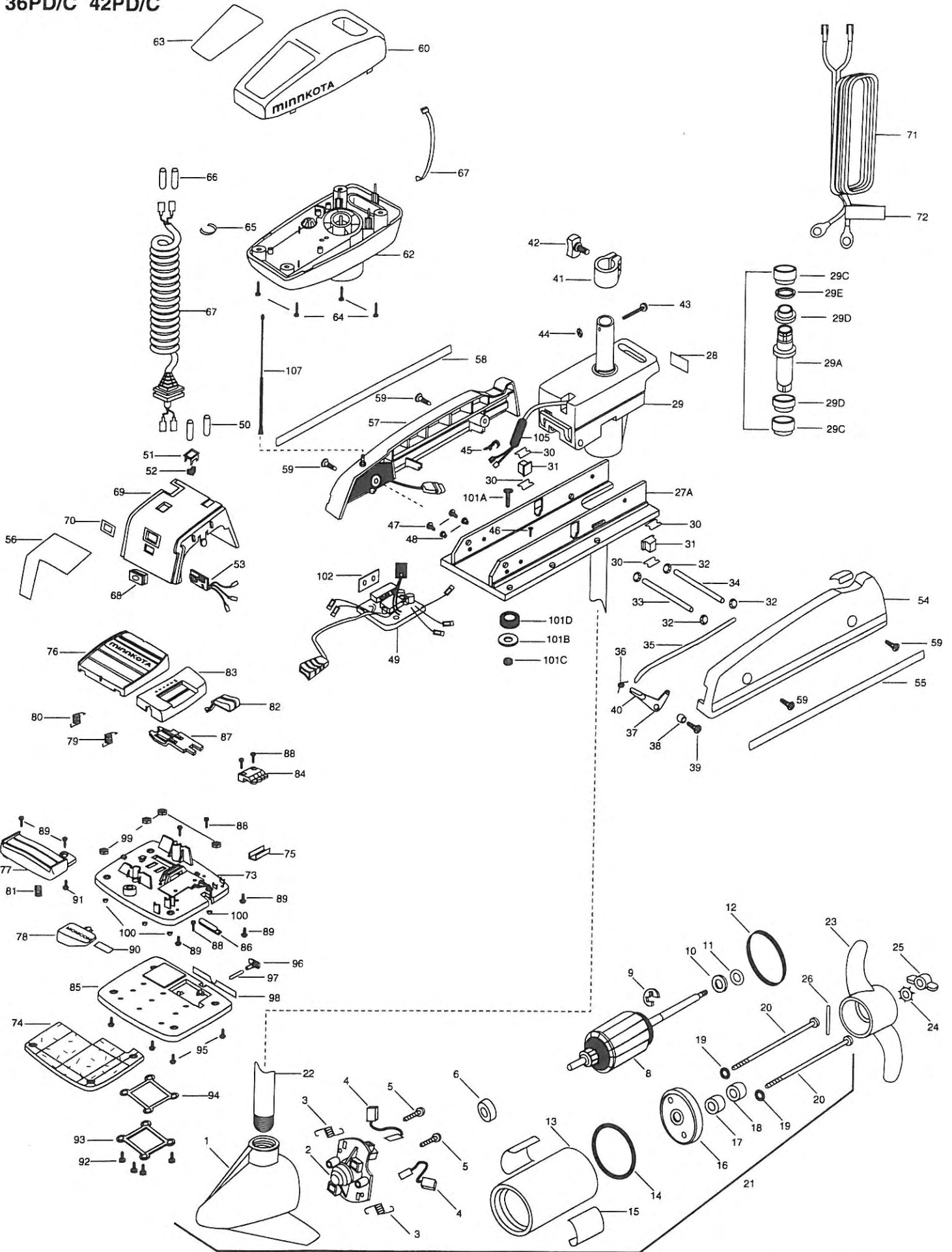


36PD/C 42PD/C



In the U.S.A., replacement parts may be ordered directly from MINN KOTA Parts Dept., JWA North America, 1531 E. Madison Avenue, Mankato, Minnesota 56001. In Canada, parts may be ordered from any of the Canadian Authorized Service Centers shown on the enclosed list. Be sure to provide the MODEL and SERIAL numbers of your motor when ordering parts. Please use the correct part numbers from the parts list. Payment for any parts ordered from the MINN KOTA parts department, may be by cash, personal check, Discover Card, MasterCard, VISA, or UPS C.O.D. To order, call 1-800-227-6433 or FAX 1-800-527-4464.

Hors de États-Unis, veuillez vous reporter à la liste ci-jointe pour le Centre de Service Agréé MINN KOTA le plus proche. Ne pas oublier de fournir les numéros de Modèle et de Série de votre Moteur lorsque vous placez une commande. Employez toujours le numéro de pièce exact se trouvant sur la liste des pièces de remplacement.

Fora da América do Norte, queira consultar a lista anexa para identificar o Centro de Serviço Autorizado MINN KOTA. Não deixe de incluir o número do MODELO e o número de SÉRIE do seu motor ao pedir peças. Sempre use os números corretos das peças da lista de peças.

PARTS LIST

1	406022	FRONT ENDBELL 36PD/C	*29D	2307303	BUSHING- OUTSIDE (2 REQ'D)	70	2306605	DECAL BATTERY GAUGE
	406023	FRONT ENDBELL 42PD/C	*29E	2304600	O-RING	71	2090601	LEADWIRE (10 GA) RINGS
2	406404	BRUSH PLATE ASSEMBLY 36PD/C	30	2305110	PAD-PIVOT SUPPORT (4 REQ'D)	72	2305800	DECAL- LEADWIRE (BATTERY)
	406403	BRUSH PLATE ASSEMBLY 42PD/C	31	2305100	PAD-PIVOT (2 REQ'D)	73	2994708	FOOT PEDAL ASSY. W/WEDGE (ITEMS 73A-100)
3	406081	BRUSH SPRING (2 REQ'D) 36PD/C	32	2013100	NUT-SPEED (4 REQ'D)	73A	2304511	FOOT PEDAL BASE-CORDLESS
	406082	BRUSH SPRING (2 REQ'D) 42PD/C	33	2300500	PIN-LATCH (PD BASE)	*74	2004705	FLOTATION MATERIAL
4	406072	BRUSH ASSEMBLY (2 REQ'D) 36PD/C	34	2300510	PIN-PIVOT (PD BASE)	75	2308500	WEAR PLATE- FOOT PEDAL
	406071	BRUSH ASSEMBLY (2 REQ'D) 42PD/C	35	2303610	ROD-RELEASE	76	2304516	FOOT PEDAL-UPPER
5	406341	BRUSH PLATE SCREW (2 REQ'D) 36PD/C	36	2302700	SPRING-RELEASE LEVER S/S	77	2304520	FOOT PEDAL-LOWER
	406342	BRUSH PLATE SCREW (2 REQ'D) 42PD/C	37	2303710	LEVER-RELEASE	78	2307210	LEVER MOM/CON
6	406010	BALL BEARING	38	2301700	SPACER-RELEASE LEVER	79	2302730	SPRING-LONG-UPPER PEDAL
8	405204	ARMATURE ASSEMBLY 36PD/C	39	2303430	SCREW-1/4-20 x 5/8-SELFTAP	80	2302731	SPRING-SHORT-UPPER PEDAL
	406208	ARMATURE ASSEMBLY 42PD/C	40	2300101	RELEASE-KNOB	81	2302732	SPRING-LOWER PEDAL SS
9	405300	E-RING	41	2031521	COLLAR DRIVE (W/INSERT)	82	2300120	KNOB-SPEED SELECTOR
10	406170	THRUST WASHER- STEEL (AS REQ'D)	42	2011365	SCREW-COLLAR KNOB	83	2300122	HOUSING-SPEED SELECTOR
11	405171	THRUST WASHER- NYLON (AS REQ'D)	43	2033400	SCREW-10-24 x 1-3/4	84	2302840	ACTUATOR-BOARD
12	406480	GASKET 36PD/C	44	2013110	NUT-HEX	85	2994707	WEDGE ASSEMBLY
	406490	GASKET 42PD/C	45	2302935	STRAIN RELIEF-DR. HOUSING	86	2302841	ACTUATOR-MOM/CON
13	405257	CENTER SECTION W/MAGNETS 36PD/C	46	2332100	SCREW-8-32 x 3/8	87	2302842	ACTUATOR-STEERING
	406256	CENTER SECTION W/MAGNETS 42PD/C	47	2332101	SCREW-8-32 x 1/2 SS (2 REQ'D)	88	2302100	SCREW-6-20 X 1/2 (5 REQ'D)
14	406460	O-RING 36PD/C	48	2301710	WASHER-INSUL. TRANSF. BAR (2 REQ'D)	89	2372100	SCREW-8-18 X 5/8 SS (5 REQ'D)
	406470	O-RING 42PD/C	49	2774024	CTRL BRD ASSY-12V PD/C INCLUDES 51, 52	90	2266610	DECAL ON/OFF SWITCH
15	2006606	DECAL-MOTOR RED (2 REQ'D) 36PD/C	50	2305400	SHRINK TUBE-3/8 OD (4 REQ'D)	91	2335130	BUMPER ACTUATOR
	2006605	DECAL-MOTOR GOLD (2 REQ'D) 42PD/C	51	2304072	BEZEL-SWITCH	92	2301310	SCREW-#8 THD 1/2 SS (4 REQ'D)
16	406032	REAR ENDBELL 36PD/C	52	2304073	SWITCH-ROCKER	93	2300250	COVER-BATTERY COMPARTMENT
	406033	REAR ENDBELL 42PD/C	53	2034031	BATTERY METER-ELECT.12 V	94	2304602	GASKET-BATTERY COMPARTMENT
17	406461	SEAL	54	2993801	SIDEPLATE (LEFT) W/REST PAD	95	2303426	SCREW- 1/4-20
18	406471	SEAL- CUP	55	2004927	DECAL-LF SIDEPLATE 36PD/C	96	2304080	SWITCH-RF FOOT PEDAL
19	401462	O-RING —THRU BOLT (2 REQ'D) 36PD/C		2004923	DECAL-LF SIDEPLATE 42PD/C	97	2304081	MAGNET-SWITCH
	405462	O-RING —THRU BOLT (2 REQ'D) 42PD/C	56	2305616	DECAL-ON/OFF 36PD/C	98	2306622	DECAL-OFF/ON
20	405352	THRU BOLT (2 REQ'D) 36PD/C		2305614	DECAL-ON/OFF 42PD/C	99	9950354	HEX NUT- 1/4-20 (4 REQ'D)
	406353	THRU BOLT (2 REQ'D) 42PD/C	57	2303927	SIDEPLATE-W/RCVR-P/D	100	2305131	RUBBER BUMPER (4 REQ'D)
21	2069026	MOTOR ASSEMBLY 36PD/C	58	2004926	DECAL-RT SIDEPLATE 36PD/C	101	2994803	BAG ASSEMBLY (ITEMS 101A-101D)
	2099051	MOTOR ASSEMBLY 42PD/C		2004922	DECAL-RT SIDEPLATE 42PD/C	*101A	2153501	BOLT-MOUNTING W/STGD (4 REQ'D)
	2889052	MOTOR ASSEMBLY 42PD/C-54"	59	2303430	SCREW-1/4-20 x 5/8-SELFTAP (4 REQ'D)	*101B	2151726	WASHER-STANDARD 5/16 SS (4 REQ'D)
22	2032053	TUBE (COMPOSITE) 42"	60	2300201	COVER-CONTROL BOX RED 36PD/C	*101C	2153100	NUT-MOUNTING (4 REQ'D)
	2032054	TUBE (COMPOSITE) 48" OPTIONAL		2300215	COVER-CONTROL BOX 42PD/C	*101D	2301720	WASHER-MOUNTING-RUBBER (6 REQ'D)
	2032055	TUBE (COMPOSITE) 54" OPTIONAL	62	2301212	CONTROL BOX	102	2305141	INSULATION PAD
23	2061125	PROPELLER (W.WEDGE) 36PD/C	63	2315625	DECAL-COVER 36PD/C	*105	2884079	RF FILTER
	2091150	PROPELLER (W.WEDGE) 42PD/C		2315632	DECAL-COVER 42PD/C	106	2994828	BAG ASSEMBLY ( ANTENNA )
24	2051700	LOCKWASHER-PROP	64	2012100	SCREW-8-18 x 5/8 THD CUT (4 REQ'D)	*107	2005115	RF ANTENNA
25	2053100	NUT-PROP	65	2303000	RING-PIG 36PD/C			
26	2092600	PIN-DRIVE SS		2303001	RING-PIG 42PD/C			
*27	2991931	BASE ASSEMBLY	66	2065400	WIRE INSULATOR-LGE 1-3/4 (2 REQ'D)			
27A	2301912	BASE MACHINED	67	2301210	COIL CORD-W/STRAIN RELIEF 36PD/C			
28	2305519	DECAL-STEERING MTR		2301211	COIL CORD-B/STRAIN RELIEF 36PD/C 48"			
29	2301840	DRIVE HOUSING		2301230	COIL CORD-W/STRAIN RELIEF 42PD/C			
29A	2302001	DRIVE HOUSING SLEEVE		2301231	COIL CORD-W/STRAIN RELIEF 42PD/C 48-54"			
29B	2887300	BUSHING KIT (29C,29D,29E)	68	2302920	GROMMET-LEADWIRE/SPCOVER			
*29C	2307302	BUSHING- INSIDE (2 REQ'D)	69	2306533	COVER-SPEED CONTROL			

\* This item is part of an assembly. This item cannot be sold separately due to machining and /or assembly that is required.

