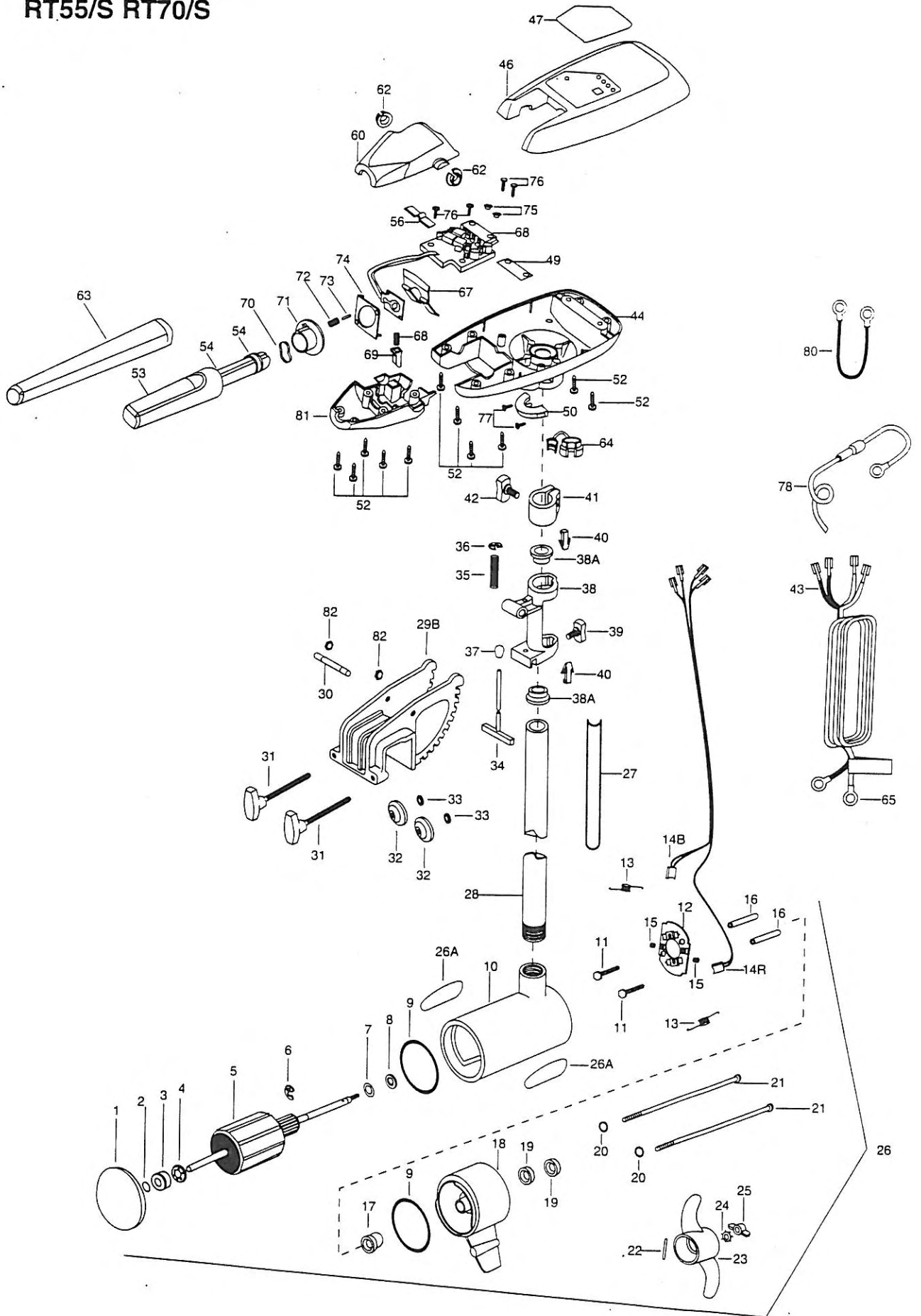
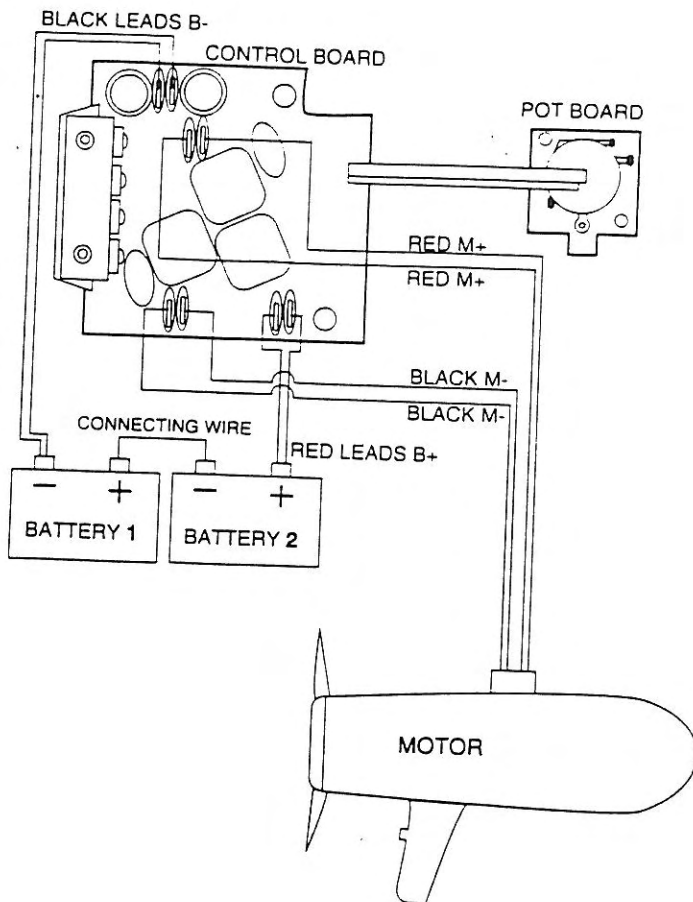


# RT55/S RT70/S



Item	Part No.	Description	Item	Part No.	Description	Item	Part No.	Description
1	409-025	Front Endbell	30	233-0500	Hinge Pin	75	230-1710	Washer- Insulated ( 2 req'd )
2	406-050	Thrust Disc	31	201-1376	Clamp Screw ( 2 req'd )	76	237-2100	Screw ( 4 req'd )
3	409-600	Spherical Bearing	32	233-1700	Clamp Washer ( 2 req'd )	77	230-1310	Screw ( 2 req'd )
4	409-301	Bearing Retainer	33	233-3000	Retaining Ring ( 2 req'd )	78	206-0310	Fused Ground Wire
5	410-204	Armature Assembly RT55/S	34	203-3601	T-Bar	80	234-0610	Connector Cable- 24v only ( RT70/S )
5	410-205	Armature Assembly RT70/S	35	233-2700	T-Bar Spring	81	200-5705	Serial No.
6	409-300	E-Ring	36	233-3001	E-Ring	82	233-3100	Speed Nuts ( 2 req'd )
7	409-170	Thrust Washer- Steel ( as req'd )	37	201-0100	Tilt Knob			
8	409-171	Thrust Washer- Nylatron ( as req'd )	38	203-1854	Hinge			
9	409-460	O-Ring ( 2 req'd )	38A	203-7300	Bushing ( 2 req'd )			
10	409-258	Center Section w/Magnets	39	201-1386	Screw- Tension			
11	405-341	Brush Plate Screw ( 2 req'd )	40	203-2800	Tension Block ( 2 req'd )			
12	409-401	Brush Plate Assembly	41	203-1520	Collar- Depth			
13	406-083	Brush Spring ( 2 req'd )	42	201-1366	Screw- Collar			
14B	409-072	Brush Assembly- Black ( 36"/42" )	43	233-0600	Leadwire- w/ Ring Terminals			
14B	409-074	Brush Assembly- Black ( 48" )	44	206-2584	Control Box			
14R	409-071	Brush Assembly- Red ( 36"/42" )	46	230-0227	Control Box Cover			
14R	409-073	Brush Assembly- Red ( 48" )	47	209-5615	Decal- Cover ( RT55/S )			
15	409-343	Brush Set Screw ( 2 req'd )	47	209-5616	Decal- Cover ( RT70/S )			
16	405-151	Brush Plate Spacer ( 2 req'd )	48	233-4005	Control Board Assembly ( RT55/S )			
17	409-000	Flange Bearing	48	234-4005	Control Board Assembly ( RT70/S )			
18	409-034	Rear Endbell	49	236-5105	Insulating Pad			
19	409-461	Seal ( 2 req'd )	50	206-1511	Collar- Control Box			
20	409-462	O-Ring- Thru Bolt ( 2 req'd )	52	203-3412	Screw ( 11 req'd )			
21	409-352	Thru Bolt ( 2 req'd )	53	299-0915	Handle Assembly- Complete			
22	209-2600	Pin- Drive	54	206-0000	Bearing- Handle ( 2 req'd )			
23	233-1120	Propeller	56	230-2742	Spring- Detent ( Off )			
24	209-1700	Lockwasher	60	206-0411	Handle- Top Half			
25	209-3100	Nut- Prop	61	206-0415	Handle- Lower Half			
26	233-7080	Motor Assembly ( RT55/S-36"/42" )	62	206-0005	Bearing- Handle Pivot ( 2 req'd )			
26	233-7081	Motor Assembly ( RT55/S-48" )	63	206-0425	Handle- Extension			
26	231-7040	Motor Assembly ( RT70/S-36"/42" )	64	233-2900	Strain Relief			
26	231-7041	Motor Assembly ( RT70/S-48" )	65	209-0700	Replacement Ring Terminals ( 2 req'd )			
26A	206-6649	Decal ( 2 req'd )	67	230-2743	Spring Handle Tilt Detent			
27	200-5500	Tube Decal	68	230-2745	Spring- Release Button			
28	203-2057	Tube ( 36" )	69	230-3720	Release Button- Handle			
28	203-2053	Tube ( 42" )	70	230-2741	Spring- Cam			
28	203-2054	Tube ( 48" Optional )	71	230-2850	Actuator- Cam			
29	299-1961	Hinge & Bracket Assembly ( 29A, 30-40 )	72	230-2740	Spring- Actuator			
29A	277-1905	Bracket & Clamp Screw ( 29B, 31-33 )	73	230-2600	Pin- Actuator			
29*B	203-1903	Bracket ( not available separately )	74	230-2851	Actuator- Forward/Reverse			

\* This item is part of an assembly. This item cannot be sold separately due to machining and/or assembly that is required.



RT55/S

