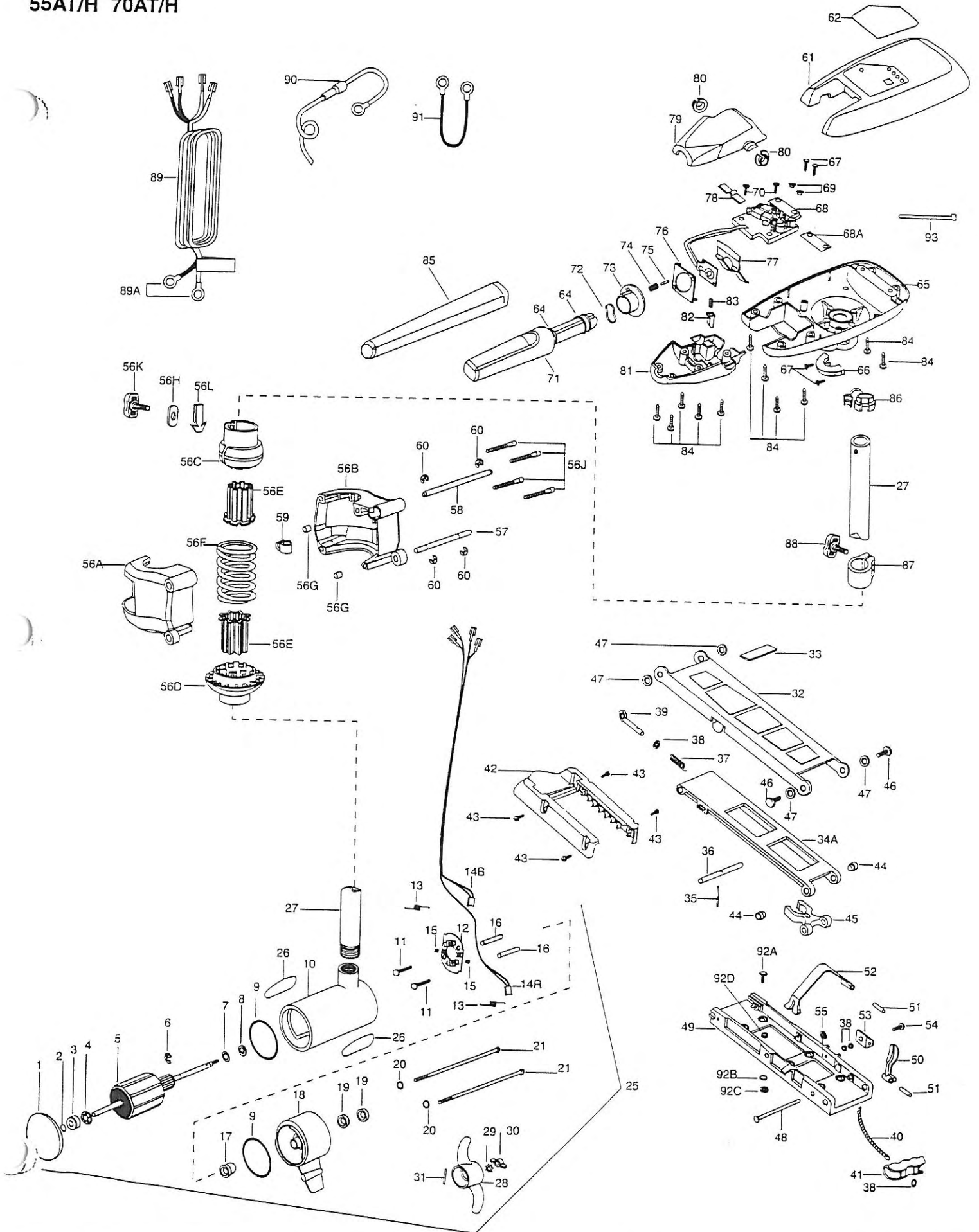


55AT/H 70AT/H



Item	Part No.	Description	Item	Part No.	Description	Item	Part No.	Description
1	409-024	Front Endbell	34*A	225-4321	Arm- Lower (order item 34)	68	233-4005	Control Board Assembly (55AT/H)
2	406-050	Thrust Disc	35	215-2610	Spring Pin	68	234-4005	Control Board Assembly (70AT/H)
3	409-600	Spherical Bearing	36	223-3600	Lock Bar	68A	236-5105	Insulating Pad
4	409-301	Bearing Retainer	37	215-2700	Spring	69	230-1710	Washer- Insulated (2 req'd)
5	410-202	Armature Assembly 55AT/H	38	215-1700	Washer- Eye Shaft (4 req'd)	70	230-1310	Screw (2 req'd)
5	410-203	Armature Assembly 70AT/H	39	215-3600	Eye Shaft	71	299-0915	Handle Assembly
6	409-300	E-Ring	40	225-1600	Rope	72	230-2741	Spring- Cam
7	409-170	Thrust Washer- Steel (as req'd)	41	215-0400	Pull Grip	73	230-2850	Actuator- Cam
8	409-171	Thrust Washer- Nylatron (as req'd)	42	226-3900	Motor Rest	74	230-2740	Spring- Actuator
9	409-460	O-Ring (2 req'd)	43	230-3430	Screw (4 req'd)	75	230-2600	Pin- Actuator
10	409-257	Center Section w/Magnets	44	223-6000	Bearing- Nyliner (2 req'd)	76	230-2851	Actuator- Forward/Reverse
11	405-351	Brush Plate Screw (2 req'd)	45	229-3801	Tube Lock	77	230-2743	Spring- Detent
12	409-301	Brush Plate Assembly	46	229-3511	Bolt- Upper Arm (2 req'd)	78	230-2742	Spring- Detent (Off)
13	406-083	Brush Spring (2 req'd)	47	229-3500	Bushing (4 req'd)	79	206-0411	Handle- Top Half
14B	409-072	Brush Assembly- Black (42")	48	223-0500	Hinge Pin	80	206-0005	Bearing- Handle Pivot (2 req'd)
14B	409-074	Brush Assembly- Black (48")	49	225-1941	Bow Plate	81	206-0415	Handle- Lower Half
14B	288-9075	Brush Assembly- Black (54")	50	226-7200	Latch Lever	82	230-3720	Release Button
14R	409-071	Brush Assembly- Red (42")	51	226-0500	Pin- Roll Latch Lever (2 req'd)	83	230-2745	Spring- Release Button
14R	409-073	Brush Assembly- Red (48")	52	226-3801	Strap- Hold Down	84	230-3412	Screw (11 req'd)
14R	288-9076	Brush Assembly- Red (54")	53	226-1910	Bracket- Hold Down Strap	85	206-0425	Handle- Extension
15	409-343	Brush Set Screw (2 req'd)	54	226-3440	Screw	86	233-2900	Strain Relief
16	405-341	Brush Plate Spacer (2 req'd)	55	233-3101	Nut- Hex	87	203-1520	Collar- Depth
17	409-000	Flange Bearing	56	277-1921	BowGuard Assembly (56A— 56L)	88	201-1365	Screw- Collar
18	409-033	Rear Endbell	56*A	226-1921	Bracket Base- Left	89	233-0600	Leadwire- w/ Ring Terminals
19	409-461	Seal (2 req'd)	56*B	226-1931	Bracket Base- Right	89A	209-0700	Replacement Ring Terminals (2 req'd)
20	409-462	O-Ring- Thru Bolt (2 req'd)	56*C	226-1520	Spring Sleeve- Upper	90	206-0310	Fused Ground Wire
21	409-352	Thru Bolt (2 req'd)	56*D	226-1530	Spring Sleeve- Lower	91	234-0610	Connector Cable- 24v only (70AT/H)
25	233-7070	Motor & Tube Assembly (55AT/ H-42")	56*E	226-4700	Insert Tube (2 req'd)	92	299-4811	Bag Assembly (92A — 92D)
25	233-7071	Motor & Tube Assembly (55AT/ H-48")	56*F	226-2700	Spring- Breakaway	92*A	215-3501	Mounting Bolt (6 req'd)
25	288-7072	Motor & Tube Assembly (55AT/ H-54")	56*G	226-7300	Bushing- Dowel (2 req'd)	92*B	215-3100	Mounting Nut (6 req'd)
25	231-7030	Motor & Tube Assembly (70AT/H-42")	56H	226-3100	Nut- Insert	92*C	215-1726	Flat Washer (6 req'd)
25	231-7031	Motor & Tube Assembly (70AT/H-48")	56*J	226-3470	Screw (4 req'd)	92*D	230-1720	Mounting Washer- Rubber (6 req'd)
25	288-7032	Motor & Tube Assembly (70AT/H-54")	56K	201-1385	Screw- Tension	93	225-6300	Tie Wrap
26	200-6605	Decal (2 req'd)	56L	226-2800	Tension Block			
27	203-2053	Tube (42")	57	226-0530	Hinge Pin- Lower			
27	203-2054	Tube (48" Optional)	58	226-0520	Hinge Pin- Upper			
27	203-2055	Tube (54" Optional)	59	226-2310	Guide- Rope			
28	233-1120	Propeller	60	226-3010	E-Ring (4 req'd)			
29	209-1700	Lockwasher	61	218-0210	Control Box Cover			
30	209-3100	Nut- Prop	62	218-5603	Decal- Cover (55AT/H)			
31	209-2600	Pin- Drive	62	218-5604	Decal- Cover (70AT/H)			
	299-1958	Bow Mount Assembly (32 — 60)	64	206-0000	Handle Bearing (2 req'd)			
32	226-4201	Arm- Upper	65	206-2582	Control Box			
33	226-5120	Bumper	66	206-1510	Collar- Control Box			
34	277-4304	Arm- Lower Assembly (34A — 41+ 59)	67	237-2100	Screw (4 req'd)			

* This item is part of an assembly. This item cannot be sold separately due to machining and /or assembly that is required.

