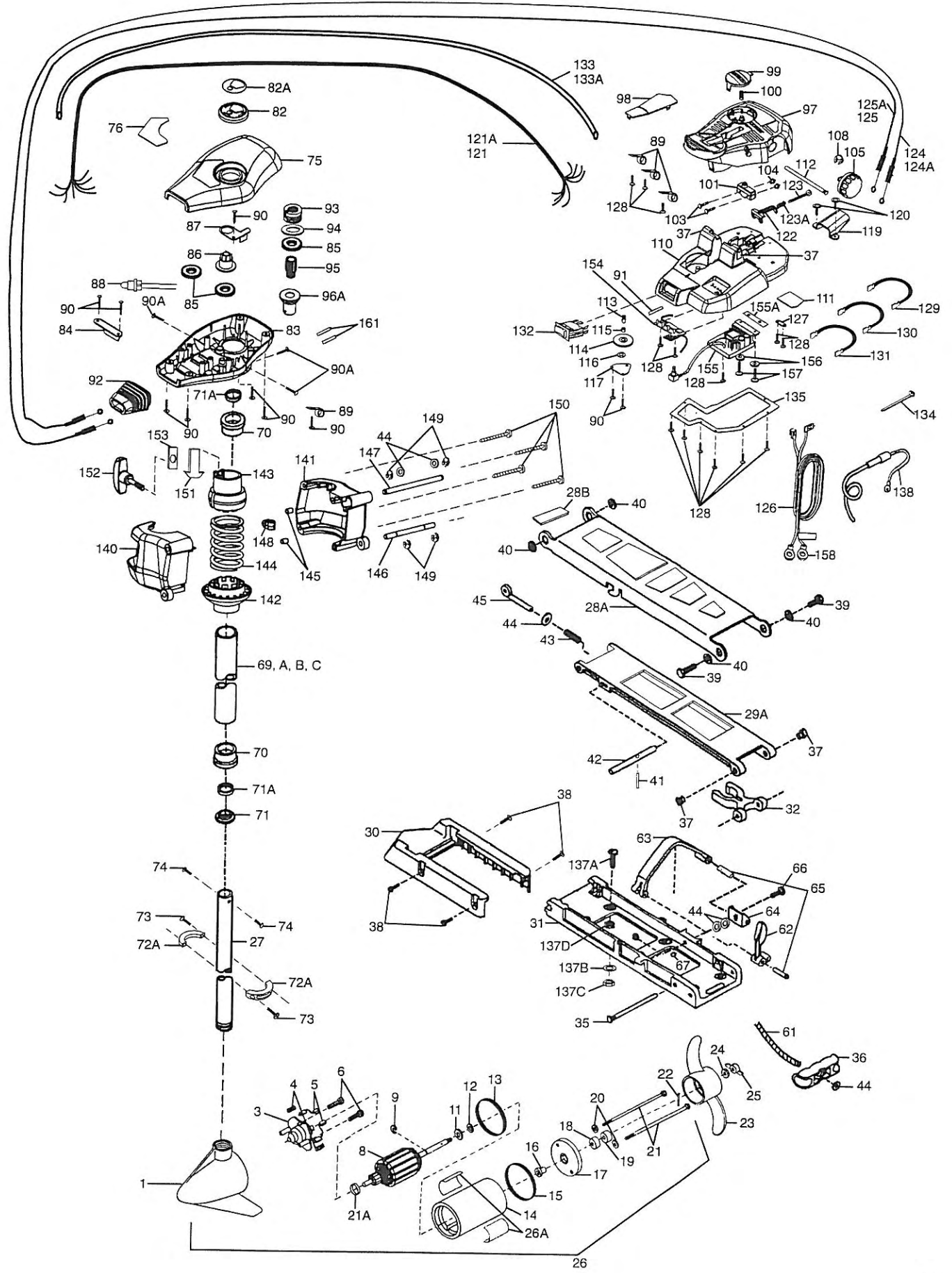


PARTS DIAGRAM 42 AT



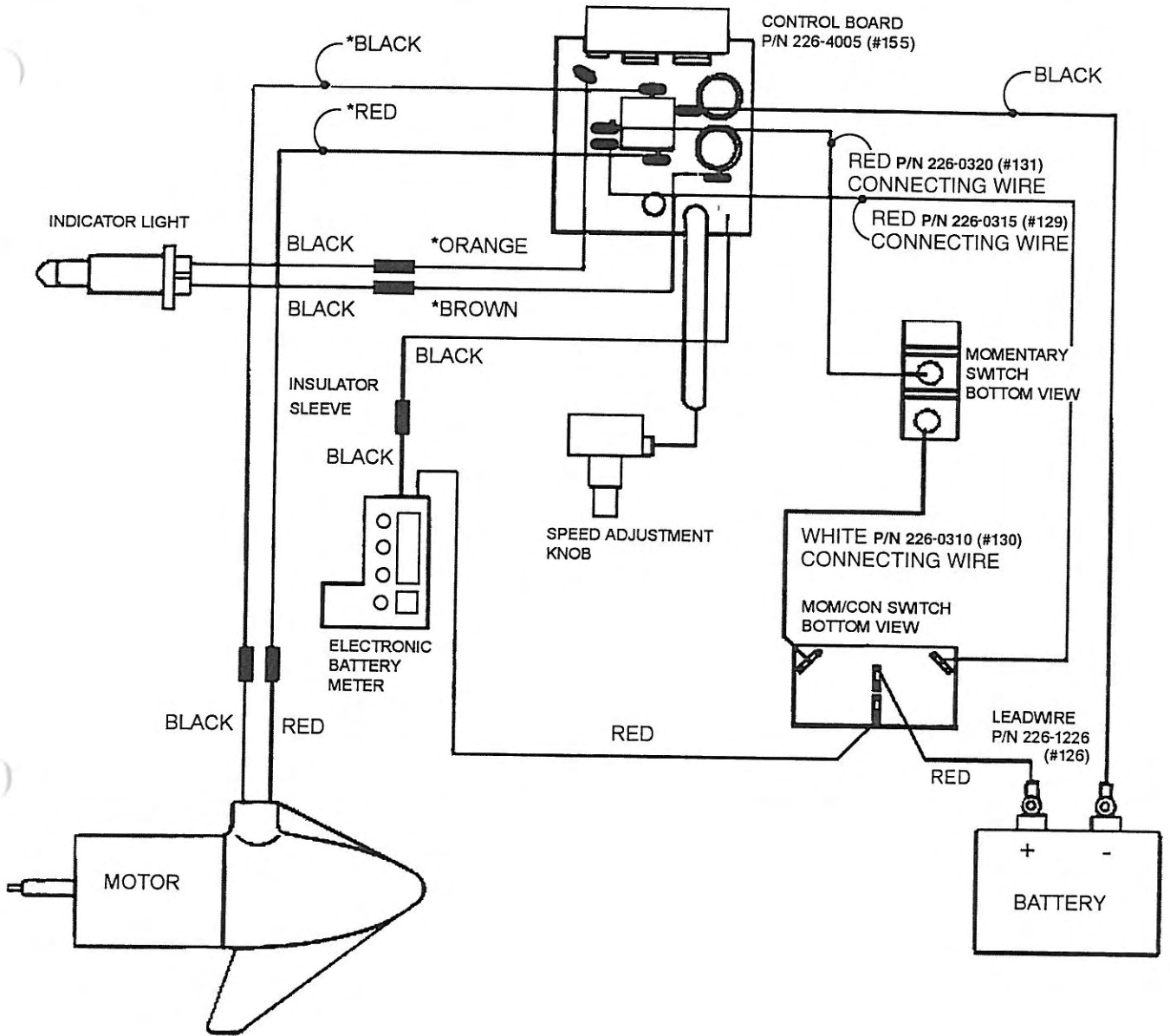
MODEL 42AT

REPLACEMENT PARTS

In the U.S.A., replacement parts may be ordered from the Minn Kota Parts Dept., JWA North America, 1531 E. Madison Ave., Mankato, Minnesota 56001. In Canada, parts may be ordered from any of the Canadian Authorized Service Centers shown on the enclosed list. Be sure to provide the MODEL and SERIAL numbers of your motor when ordering parts and please use the correct part Numbers from the Parts List. Payment for parts ordered from the Minn Kota Parts Dept., may be by cash, check, MasterCard, Visa card, or UPS C.O.D. To order call 1-800-227-6433.

Item #	Part Number	Description	Item #	Part Number	Description
1	406-023	Front Endbell	90	230-1310	Screw (10 req'd)
3	406-403	Brush Plate Assembly	90A	226-2109	Screw (3 req'd)
4	406-082	Brush Spring (2 req'd)	91	237-5400	Shrink Tube
5	406-071	Brush Assembly (2 req'd)	92	226-5110	Boot-Control Box
6	406-342	Brush Plate Screw (2 req'd)	93	223-2360	Pulley-Control Box
8	406-208	Armature Assembly	94	226-1730	Washer-Nylon
9	405-300	E-Ring	95	226-7805	Drive Pinion (Order Item #96)
11	406-170	Thrust Washer (Steel)	96	277-6204	Top Bearing Race Assembly (Includes #95, 96A)
12	405-171	Thrust Washer (Nylon)	96A	226-6246	Bearing Race (Order Item #96)
13	406-490	Gasket	97	226-4430	Foot Pedal
14	409-253	Center Section W/Magnets	98	226-6700	Plug
15	406-470	O-Ring	99	226-3700	Push Button
16	406-600	Flange Bearing	100	230-2732	Spring
17	406-033	Rear Endbell	101	226-4023	Switch
18	406-461	Seal	103	226-2114	Screw (2 req'd)
19	406-471	Seal (Cup)	104	223-3100	Nut (2 req'd)
20	405-462	O-Ring (Thru Bolt) (2 req'd)	105	226-0160	Speed Control Knob
21	406-353	Thru Bolt (2 req'd)	108	226-3000	E-Ring
21A	406-010	Ball Bearing	110	226-4500	Foot Pedal Base
22	209-2600	Drive Pin	111	226-5605	Decal-Battery
23	209-1150	Propeller	112	226-0510	Pin-Pivot
24	205-1700	Lockwasher	113	226-0515	Pin-Pulley
25	205-3100	Prop Nut	114	226-2300	Pulley
26	209-9051	Motor Assembly Complete (42" Std) (48", 54", Optional)	115	226-0000	Bearing-Pulley
26A	206-6642	Motor Decal (2 req'd)	116	226-1705	Washer-Nylatron
27	203-2063	Tube 42"	117	226-6400	Cover-Pulley
27A	203-2064	Tube 48" (Optional)	119	226-5115	Boot-Foot Pedal
27B	203-2065	Tube 54" (Optional)	120	226-2113	Screw (2 req'd)
28	299-1957	Bow Guard 360 Assembly	121	226-1215	Wire Harness (5')
28A	226-4201	Arm-Upper	121A	226-1216	Wire Harness (7') (Optional)
28B	226-5120	Bumper	122	226-3210	Bracket-Conduit Adj.
29	277-4302	Arm-Lower Assembly (w/Items #29A, 36, 41-45, 61)	123	226-3460	Screw
29A	225-4321	Arm-Lower (Order Item #29)	123A	226-2720	Spring
30	226-3900	Motor Rest	124	226-7500	Cable Assembly-Right (5')
31	225-1941	Bow Plate	124A	226-7501	Cable Assembly-Right (7') (Optional)
32	229-3801	Tube Lock	125	226-7510	Cable Assembly-Left (5')
35	223-0500	Hinge Pin	125A	226-7511	Cable Assembly-Left (7') (Optional)
36	215-0400	Pull Grip	126	226-1226	Leadwire
37	223-6000	Nyliner Bearing (4 req'd)	127	226-3205	Clamp
38	230-3430	Screw (4 req'd)	128	233-2103	Screw (14 req'd)
39	229-3511	Bolt-Upper Arm (2 req'd)	129	226-0315	Connecting Wire-Red (See Wiring Diagram)
40	229-3500	Bushing-Upper Arm (4 req'd)	130	226-0310	Connecting Wire-White (See Wiring Diagram)
41	215-2610	Spring Pin	131	226-0320	Connecting Wire-Red (See Wiring Diagram)
42	223-3600	Lock Bar	132	225-4031	Switch Mom/Off/Con
43	215-2700	Spring	133	226-5430	Cable Jacket (5')
44	215-1700	Washer (6 req'd)	133A	226-5431	Cable Jacket (7') (Optional)
45	215-3600	Eye Shaft	134	225-6300	Tie Wrap
61	225-1600	Rope	135	226-6410	Cover Plate
62	226-7200	Latch Lever	137	299-4811	Bag Assembly
63	226-3800	Hold Down Strap	137A	215-3501	Mounting Bolt (6 req'd) (Order #137)
64	226-1910	Bracket	137B	230-1720	Mounting Washer (6 req'd) (Order #137)
65	226-0500	Roll Pin (2 req'd)	137C	215-3100	Mounting Nut (6 req'd) (Order #137)
66	226-3440	Screw	137D	215-1726	Mounting Flat Washer (6 req'd)
67	233-3101	Hex Nut	138	206-0310	Fused Grounding Wire
69	299-2015	Outer Tube Assembly (18) (Includes #69A, 70)	139	277-1931	Bracket Assembly Bowguard Includes the Numbers Starred (*)
69A	227-2066	Outer Tube (18) (Order #69)	140	226-1921*	Bracket Base-Left (Order #139)
69B	299-2016	Outer Tube Assembly (24) (Includes #69B, 70)	141	226-1931*	Bracket Base-Right (Order #139)
69C	227-2067	Outer Tube (24) (Order #69B)	142	226-1530*	Spring Sleeve-Lower (Order #139)
70	226-6260	Bearing Race (2 req'd)	143	226-1520*	Spring Sleeve-Upper (Order #139)
71	226-6115	Bearing Cone	144	226-2700*	Spring Break Away (Order #139)
71A	226-6000	Bearing	145	226-7300*	Bushing (2 req'd) (Order #139)
72	277-1615	Collar Kit (Includes #72A, 73)	146	226-0530	Hinge Pin Lower
72A	226-1615	Collar Half (2 req'd) (Order Item #72)	147	226-0520	Hinge Pin Upper
73	226-3450	Screw (2 req'd) (Order Item #72)	148	226-2310	Rope Guide
74	226-3410	Screw (2 req'd)	149	226-3010	E-Ring (4 req'd)
75	226-0263	Control Box Cover	150	226-3470*	Screw (4 req'd) (Order #139)
76	226-5523	Decal-Cover	151	226-2800*	Tension Block (Order #139)
82	226-0150	Pointer Disc	152	201-1385	Knob-Tension
82A	226-5800	Decal Indicator	153	226-3100*	Nut-Insert (Order #139)
83	226-2530	Control Box	154	230-4835	Battery Gauge 2034035
84	226-1900	Bracket-Conduit	155	226-4005	Control Board Assembly
85	226-7800	Gear Indicator (3 req'd)	155A	226-5105	Insulating Pad
86	226-2220	Indicator-Drive	156	226-1711	Washer (2 req'd)
87	226-1905	Bracket-Indicator	157	237-2100	Screw (2 req'd)
88	226-4015	Light-Indicator	158	209-0700	Ring Terminal (2 req'd)
89	226-3200	Clamp-Wire Harness (4 req'd)	161	235-5410	Shrink Tube (2)

WIRING DIAGRAM 42AT



* 5' HARNESS	P/N 226-1215
* 7' HARNESS	P/N 226-1216

42AT