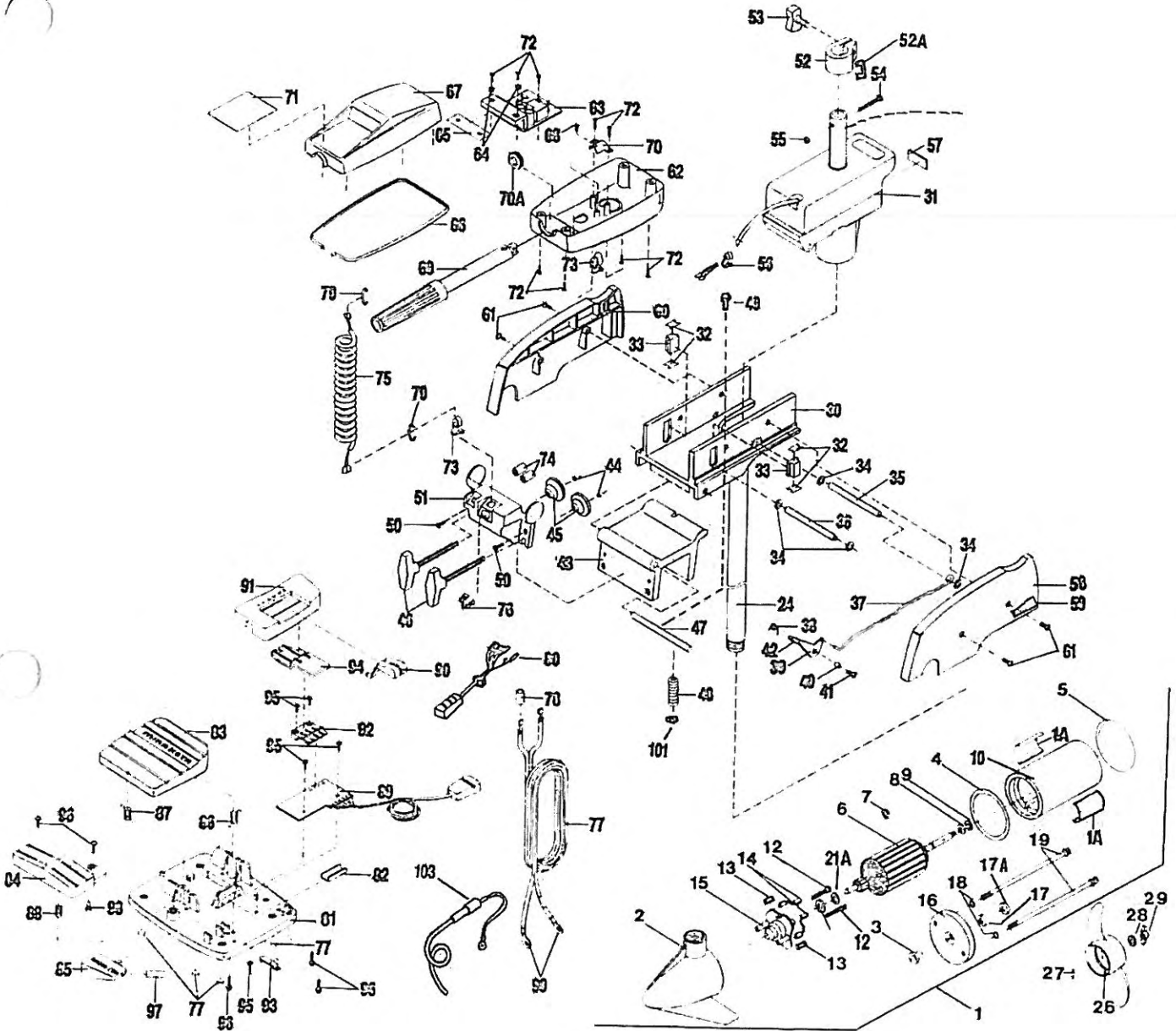


PARTS DIAGRAM



Model 665MXTa

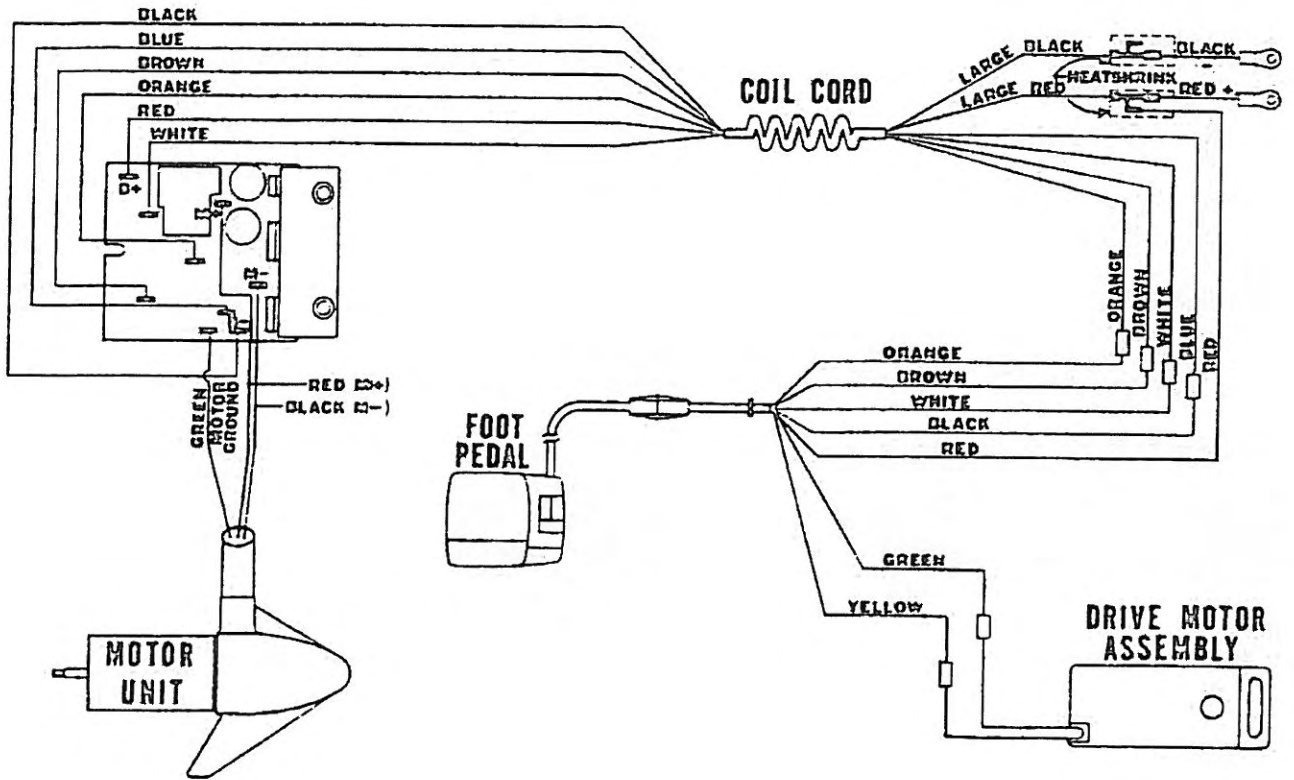
REPLACEMENT PARTS

In the U.S.A., replacement parts may be ordered from the Minn Kota Parts Dept., Johnson Fishing, Inc., 1531 E. Madison Ave., Mankato, MN 56001. In Canada, parts may be ordered from any of the Canadian Authorized Service Centers shown on the enclosed list. Be sure to provide the MODEL and SERIAL numbers of your motor when ordering parts and please use the correct part Numbers from the Parts List. Payment for parts ordered from the Minn Kota Parts Dept. may be by cash, check, MasterCard, Visa card, or UPS C.O.D. Please add \$3.00 for postage and handling on all orders. Minimum charge \$3.00.

Item No.	Part No.	Description	Item No.	Part No.	Description
1	206-9026	Motor Assembly-Complete (42", 48")	53	201-1365	Collar Screw
1A	206-6641	Decal-Motor (2 req'd.)	54	233-1303	Screw
2	406-022	Front Endbell	55	233-3101	Hex Nut
3	406-600	Flange Bearing	56	230-2935	Strain Relief
4	406-480	Gasket	57	230-5521	Decal-Steering Motor
5	406-460	O-Ring	58	235-3800	Sideplate-Left
6	405-204	Armature	59	235-5505	Decal-Sideplate (2 req'd.)
7	405-300	E-Ring	60	235-3900	Sideplate-Right
8	406-170	Steel Washer	61	230-3430	Screw (4 req'd.)
9	405-171	Thrust Washer	62	216-2544	Control Box
10	405-257	Center Section w/Magnets	63	235-4021	Control Board Assembly
12	406-341	Brush Plate Screw (2 req'd.)	64	230-1710	Washer-Insulating (2 req'd.)
12A	406-090	Brushholder	65	236-5105	Insulating Pad
13	406-081	Brush Spring (2 req'd.)	66	206-6931	Gasket-Cover
14	406-070	Brush (2 req'd.)	67	206-0253	Control Box Cover
15	406-404	Brush Plate w/Bearing	68	235-3402	Screw
16	406-032	Rear Endbell	69	235-0901	Handle Assembly
17	406-461	Seal (1 req'd.)	70	235-0030	Handle Stop
17A	406-471	Cup Seal	70A	201-0010	Outer Handle Bearing
18	401-462	Thru Bolt O-Ring (2 req'd.)	71	235-5635	Decal-Cover
19	405-352	Thru Bolt (2 req'd.)	72	201-2100	Screw (9 req'd.)
21A	406-010	Ball Bearing	73	233-2900	Strain Relief (2 req'd.)
21B	401-050	Thrust Disc	74	235-5410	Shrink Tube (2 req'd.)
25	203-2053	Tube—42"	75	235-1201	Coil Cord
25A	203-2054	Tube—48" (Optional)	76	201-2910	Strain Relief
26	206-1125	Propeller	77	235-0600	Lead Wire (Includes Battery Terminals)
27	209-2600	Drive Pin	78	206-5400	Wire Insulator (Lg.)
28	205-1700	Prop Washer	79	230-3001	Pig Ring (2 req'd.)
29	205-3100	Prop Nut	80	235-0701	Control Cord
30	235-1902	Hinge Base	81	230-4510	Foot Pedal Base
31	230-1830	Drive Housing	82	230-8500	Wear Plate
32	230-5110	Pivot Pad Support (4 req'd.)	83	230-4516	Foot Pedal-Upper
33	230-5100	Pivot Pad (2 req'd.)	84	230-4520	Foot Pedal-Lower
34	201-3110	Speed nut (4 req'd.)	85	230-7210	Lever-Mom/Con
35	230-0500	Latch Pin	86	230-2730	Spring-Long/Upper Pedal
36	230-0510	Pivot Pin	87	230-2731	Spring-Short/Upper Pedal
37	235-3600	Release Rod	88	230-2732	Spring-Lower Pedal
37A	230-3110	Push Nut	89	230-4012	Control Board Assembly
38	230-2700	Spring	90	230-0120	Knob-Speed Selector
39	230-3700	Release Lever	91	230-0121	Housing-Speed Selector
40	230-1700	Spacer-Release Lever	92	230-2840	Actuator-Board
41	230-3430	Screw	93	230-2841	Actuator-Mom/Con
42	230-0100	Release Lever Knob	94	230-2842	Actuator-Steering
43	235-1912	Hinge Bracket	95	230-2100	Screw #6-20 x 1/2 (5 req'd.)
44	201-3010	Retaining Ring(2 req'd.)	96	237-2100	Screw #8-18 x 5/8 (5 req'd.)
45	201-1710	Clamp Screw Washer (2 req'd.)	97	230-6601	Decal Mom/Con Lever
46	201-1375	Clamp Screw (2 req'd.)	98	233-5130	Bumper-Actuator
47	235-0500	Hinge Pin	99	209-0700	Ring Terminal (2 req'd.)
48	235-1500	Adjusting Spacer (9 req'd.)	100	299-4802	Bag Assembly
49	235-2100	Screw	*100A	230-5131	Rubber Bumper (6 req'd.)
50	235-3401	Screw (2 req'd.)	101	235-3100	Nut-Jam
51	235-6502	Front Housing	102	206-0310	Fused Grounding Wire
52	230-1505	Collar Drive			
52A	203-2800	Tension Block			

*This item is part of an assembly. This item cannot be sold separately due to machining and/or assembly that is required.

WIRING DIAGRAM



MINN KOTA ELECTRIC FISHING MOTORS

1531 E MADISON AVENUE
PO BOX 8129
MANKATO MINNESOTA 56002-8129
PARTS, SERVICE WARRANTY:
CALL TOLL FREE:
1-800-227-6433
FAX NO. (507) 345-7852