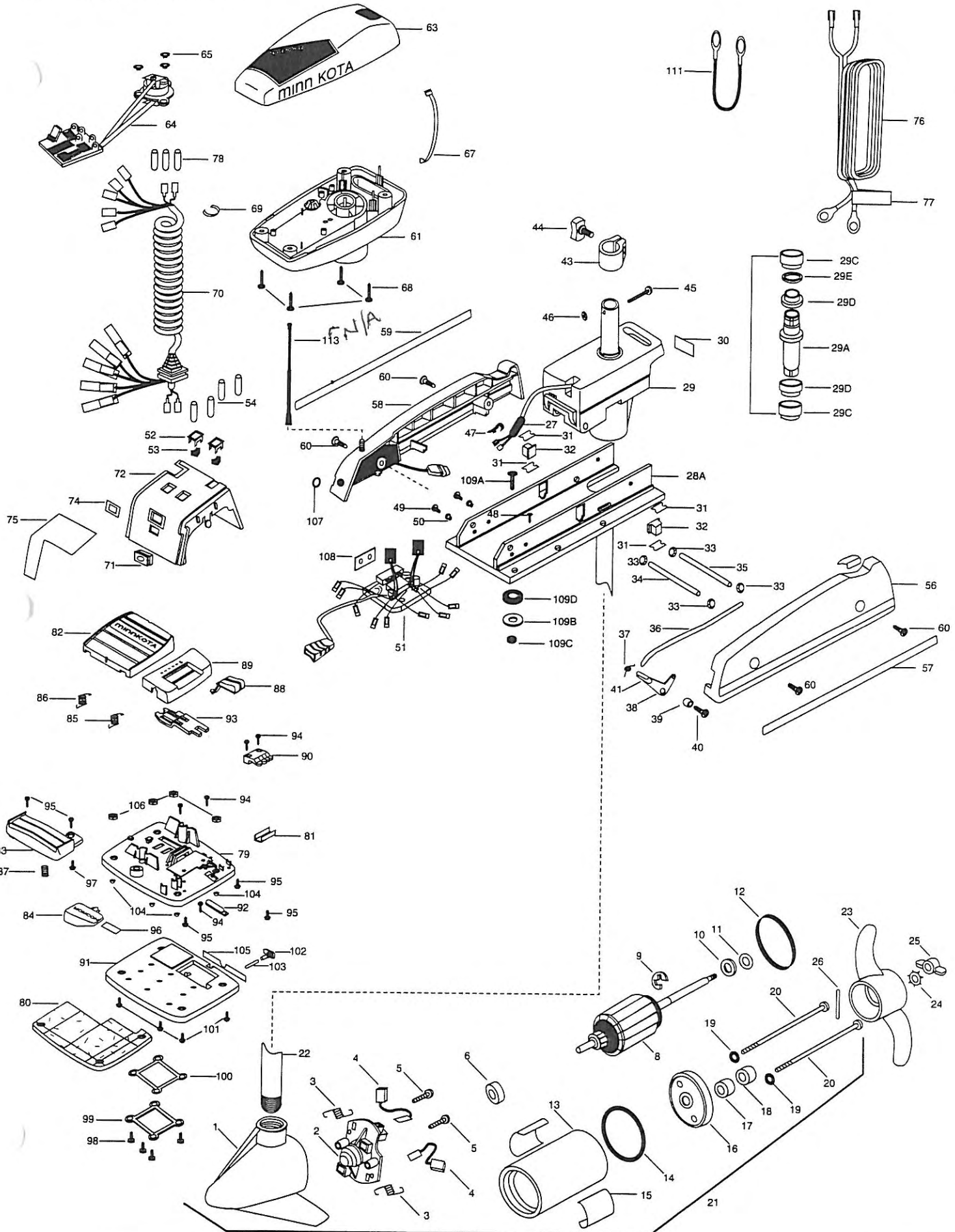


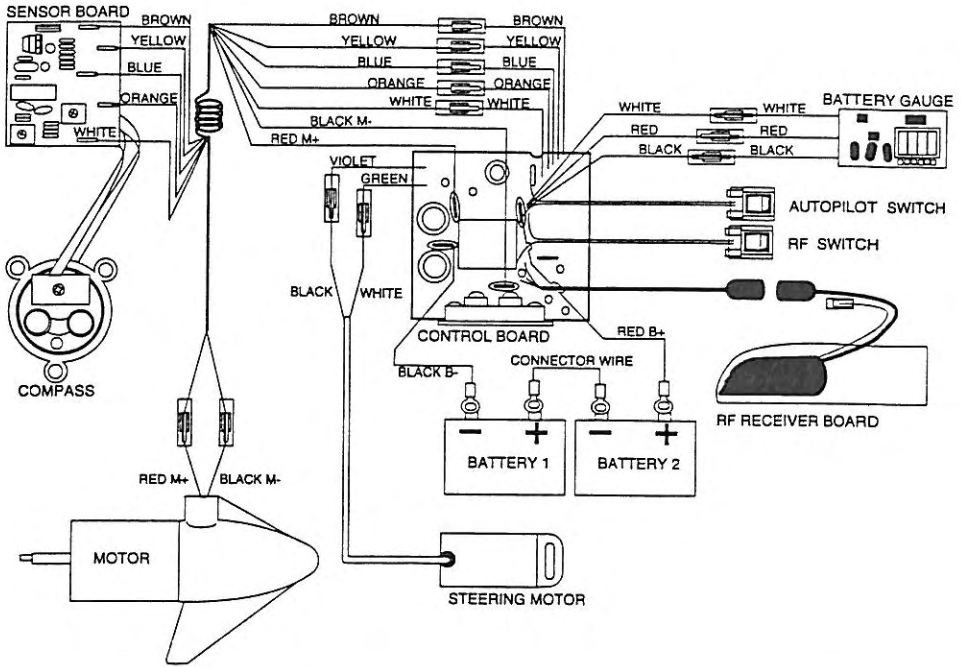
RT42AP/C RT48AP/C



| | | | | | | | | |
|------|---------|--------------------------------------|-----|---------|-----------------------------------------|-------|---------|-----------------------------------|
| 1 | 409022 | FRONT ENDBELL | 46 | 2333101 | NUT-HEX SS | 99 | 2300250 | COVER-BATTERY COMPARTMENT |
| 2 | 406403 | BRUSH PLATE ASSEMBLY | 47 | 2302935 | STRAIN RELIEF-DR. HOUSING | 100 | 2304602 | GASKET-BATTERY COMPARTMENT |
| 3 | 406082 | BRUSH SPRING (2 REQ'D) | 48 | 2332100 | SCREW-8-32 X 3/8 | 101 | 2303425 | SCREW- 1/4-20 (4 REQ'D) |
| 4 | 406071 | BRUSH ASSEMBLY (2 REQ'D) | 49 | 2332101 | SCREW-8-32 X 1/2 SS (2 REQ'D) | 102 | 2304080 | SWITCH-RF FOOT PEDAL |
| 5 | 406342 | BRUSH PLATE SCREW (2 REQ'D) | 50 | 2301710 | WASHER-INSUL. TRANSF. BAR (2 REQ'D) | 103 | 2304081 | MAGNET- SWITCH |
| 6 | 406010 | BALL BEARING | 51 | 2304025 | CTRL BRD ASSY-12V AP/C | 104 | 2305131 | RUBBER BUMPER (4 REQ'D) |
| 8 | 409204 | ARMATURE ASSEMBLY RT42AP/C | | 2304027 | CTRL BRD ASSY-24V AP/C | 105 | 2306622 | DECAL- OFF/ON |
| | 409205 | ARMATURE ASSEMBLY RT48AP/C | 52 | 2304072 | BEZEL-SWITCH (2 REQ'D) | 106 | 2303115 | HEX NUT 1/4-20 |
| 9 | 405300 | E-RING | 53 | 2304073 | SWITCH-ROCKER (2 REQ'D) | 107 | 2306620 | DECAL- LENS COVER |
| 10 | 406170 | THRUST WASHER- STEEL (AS REQ'D) | 54 | 2305400 | SHRINK TUBE-3/8 OD (4 REQ'D) | 108 | 2305141 | INSULATION PAD |
| 11 | 405171 | THRUST WASHER- NYLON (AS REQ'D) | 56 | 2993801 | SIDEPLATE(LEFT)W/REST PAD | 109 | 2994805 | BAG ASSEMBLY (ITEMS 109A-109D) |
| 12 | 406490 | GASKET RT42AP/C | 57 | 2004919 | DECAL-LF SIDEPLATE | *109A | 2333500 | BOLT-MOUNTING SS (4 REQ'D) |
| 13 | 409254 | CENTER SECTION W/MAGNETS RT42AP/C | 58 | 2303926 | SIDEPLATE-W/RCSV-A/P | *109B | 2151726 | WASHER-STANDARD 5/16 SS (4 REQ'D) |
| | 409255 | CENTER SECTION W/MAGNETS RT48AP/C | 59 | 2004918 | DECAL-RT SIDEPLATE | *109C | 2333102 | NUT-MOUNTING (4 REQ'D) |
| 14 | 406470 | O-RING RT42AP/C | 60 | 2303430 | SCREW-1/4-20 X 5/8 (4 REQ'D) | *109D | 2301720 | WASHER-MOUNTING (6 REQ'D) |
| 15 | 2066649 | DECAL RIPTIDE (2 REQ'D) | 61 | 2302515 | CONTROL BOX (PLASTIC) | 111 | 2090620 | CONNECTOR CABLE (24V ONLY) |
| 16 | 409032 | REAR ENDBELL | 63 | 2300216 | CONTROL BOX COVER | 113 | 2001515 | RF ANTENNA |
| 17 | 406461 | SEAL | 64 | 2994000 | CONTROL BOARD COMPASS ASSY | | | |
| 18 | 406471 | SEAL- CUP | 65 | 2302960 | GROMMET-COMPASS (3 REQ'D) | | | |
| 19 | 405462 | O-RING —THRU BOLT (2 REQ'D) | 66 | 2332103 | SCREW-6-20 X 3/8 (2 REQ'D) | | | |
| 20 | 406353 | THRU BOLT (2 REQ'D) | 67 | 2256300 | TIE WRAP-5.5*-BLACK | | | |
| 21 | 2099065 | MOTOR ASSEMBLY RT42/AP/C | 68 | 2372100 | SCREW-8-18 X 5/8 SS (4 REQ'D) | | | |
| | 2099057 | MOTOR ASSEMBLY RT48/AP/C | 69 | 2303001 | RING-PIG | | | |
| 22 | 2032053 | TUBE 42" | 70 | 2301220 | COIL CORD-W/STRAIN RELIEF 42" | | | |
| | 2032054 | TUBE 48" OPTIONAL | | 2301221 | COIL CORD-W/STRAIN RELIEF 48" | | | |
| 23 | 2091150 | PROPELLER (W.WEDGE) | 71 | 2302920 | GROMMET-LEADWIRE/SP.COVER | | | |
| 24 | 2051700 | LOCKWASHER-PROP | 72 | 2306532 | COVER-SPEED CONTROL | | | |
| 25 | 2053100 | NUT-PROP | 74 | 2306606 | DECAL -HOLE RT | | | |
| 26 | 2092600 | PIN-DRIVE | 75 | 2305607 | DECAL-ON/OFF RT42AP/C | | | |
| 27 | 2304079 | RF FILTER | | 2305608 | DECAL-ON/OFF RT48AP/C | | | |
| *28 | 2991941 | BASE ASSEMBLY | 76 | 2090600 | LEADWIRE (10 GA) RINGS | | | |
| 28A | 2301913 | BASE MACHINED | 77 | 2305800 | DECAL LEADWIRE (BATTERY) | | | |
| 29 | 2301841 | DRIVE HOUSING-QUICK RELEASE | 78 | 2065400 | WIRE INSULATOR (3 REQ'D) | | | |
| *29A | 2302001 | DRIVE HOUSING SLEEVE | 79 | 2994706 | FOOT PEDAL ASSY.W/WEDGE (ITEMS 79A-106) | | | |
| 29B | 2887301 | BUSHING KIT (29C, 29D, 29E) | 79A | 2304511 | FOOT PEDAL BASE-CORDLESS | | | |
| *29C | 2307302 | BUSHING- INSIDE (2 REQ'D) | *80 | 2004705 | FLOTATION MATERIAL | | | |
| *29D | 2307303 | BUSHING- OUTSIDE (2 REQ'D) | 81 | 2308500 | WEAR PLATE | | | |
| *29E | 2304600 | O-RING | 82 | 2304516 | FOOT PEDAL-UPPER | | | |
| *29F | 2307025 | MOTOR DRIVE HOUSING W/WIRE & GROMMET | 83 | 2304520 | FOOT PEDAL-LOWER | | | |
| 30 | 2305519 | DECAL-STEERING MTR | 84 | 2307210 | LEVER MOM/CON | | | |
| 31 | 2305110 | PAD-PIVOT SUPPORT (4 REQ'D) | 85 | 2302730 | SPRING-LONG-UPPER PEDAL | | | |
| 32 | 2305100 | PAD-PIVOT (2 REQ'D) | 86 | 2302731 | SPRING-SHORT-UPPER PEDAL | | | |
| 33 | 2013100 | NUT-SPEED | 87 | 2302732 | SPRING-LOWER PEDAL SS | | | |
| 34 | 2300500 | PIN-LATCH (PD BASE) | 88 | 2300120 | KNOB-SPEED SELECTOR | | | |
| 35 | 2300510 | PIN-PIVOT (PD BASE) | 89 | 2300122 | HOUSING-SPEED SELECTOR | | | |
| 36 | 2303610 | ROD-RELEASE (11 GA.) | 90 | 2302840 | ACTUATOR-BOARD | | | |
| 37 | 2302700 | SPRING- RELEASE LEVER | 91 | 2994709 | WEDGE ASSEMBLY | | | |
| 38 | 2303710 | LEVER-RELEASE | 92 | 2302841 | ACTUATOR-MOM/CON | | | |
| 39 | 2301700 | SPACER-RELEASE LEVER | 93 | 2302842 | ACTUATOR-STEERING | | | |
| 40 | 2303430 | SCREW-1/4-20 x 5/8 | 94 | 2302100 | SCREW-6-20 X 1/2 (5 REQ'D) | | | |
| 42 | 2300101 | RELEASE-KNOB | 95 | 2372100 | SCREW-8-18 X 5/8 SS (5 REQ'D) | | | |
| 43 | 2031521 | COLLAR DRIVE W/INSERT | 96 | 2266610 | ON/OFF SWITCH | | | |
| 44 | 2011366 | SCREW-COLLAR KNOB | 97 | 2335130 | BUMPER ACTUATOR | | | |
| 45 | 2332102 | SCREW-10-24 X 1-3/4 SS | 98 | 2301310 | SCREW-#8 THD 1/2 SS (4 REQ'D) | | | |

* This item is part of an assembly. This item cannot be sold separately due to machining and/or assembly that is required.

48PD/AP/C RT48/AP/C



36-42PD/AP/C RT42/AP/C

