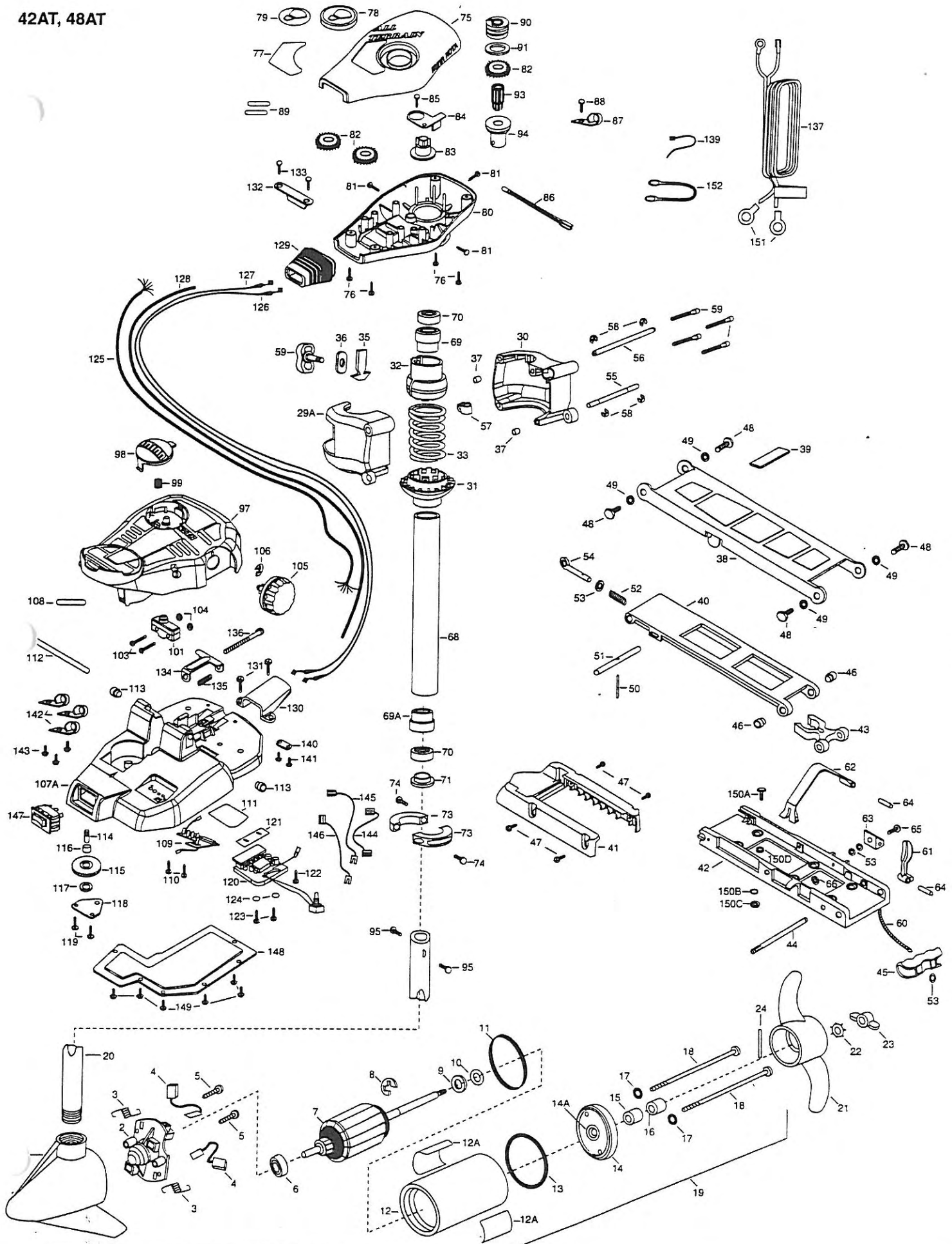


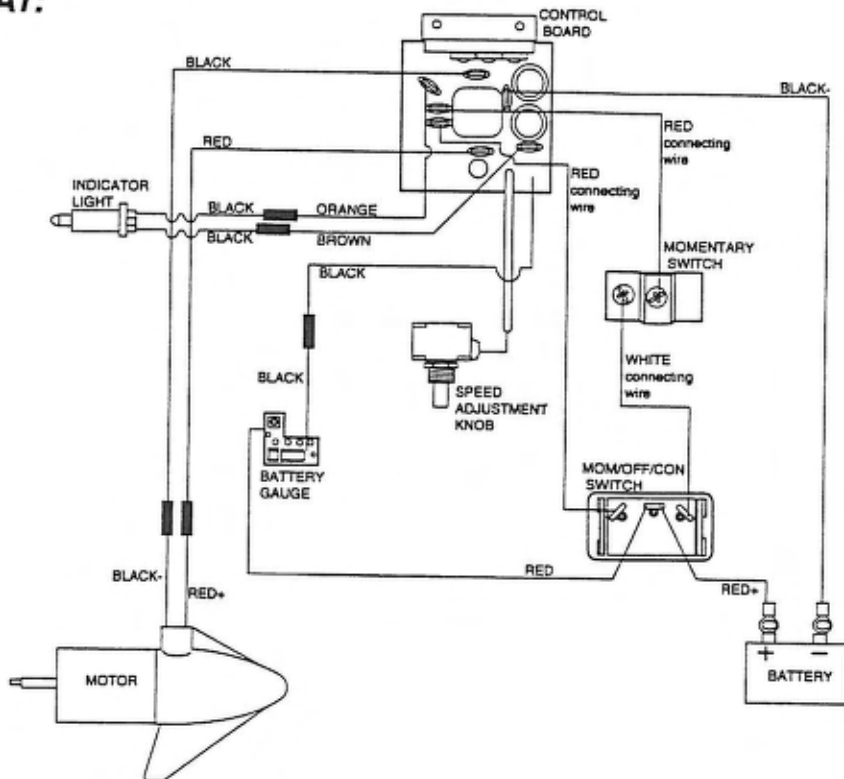
42AT, 48AT



2	406403	BRUSH PLATE ASSEMBLY	54	2153600	EYE SHAFT	2034036	BATTERY GAUGE- 24V
3	406082	BRUSH SPRING (2 REQ'D)	55	2260530	HINGE PIN- LOWER	110	2332103 SCREW- 6-20 X 3/8" (2 REQ'D)
4	406071	BRUSH ASSEMBLY (2 REQ'D)	56	2260520	HINGE PIN- UPPER	111	2265605 DECAL- BATTERY GAUGE
5	406342	BRUSH PLATE SCREW (2 REQ'D)	57	2262310	GUIDE-ROPE	*112	2260510 PIN-PIVOT- FOOT PEDAL
6	406010	BALL BEARING	58	2263010	E-RING (4 REQ'D)	113	2236000 BEARING- NYLINER (2 REQ'D)
7	406208	ARMATURE ASSEMBLY 42AT	59	2011385	SCREW- TENSION	114	2260515 PIN-PULLEY- AXLE
	406207	ARMATURE ASSEMBLY 48AT	60	2251600	ROPE- 48"	115	2262300 PULLEY- FOOT PEDAL
8	405300	E-RING	61	2267200	LATCH LEVER	116	2260000 BEARING- PULLEY
9	406170	THRUST WASHER- STEEL (AS REQ'D)	62	2263800	STRAP-HOLD DOWN	117	2261705 WASHER- NYLATRON
10	405171	THRUST WASHER- NYLON (AS REQ'D)	63	2261910	BRACKET- HOLD DOWN STRAP	118	2266400 COVER-PULLEY
11	406490	GASKET	64	2260500	PIN-ROLL LATCH LEVER (2 REQ'D)	119	2301310 SCREW-8-18 X 1/2" (2 REQ'D)
12	409253	CENTER SECTION W/MAGNETS	65	2263440	SCREW-10-24 X 3/4"	120	2264005 CONTROL BOARD ASSEMBLY 12V
12A	2066605	DECAL- MOTOR GOLD (2 REQ'D)	66	2333101	NUT-HEX	2264009	CONTROL BOARD ASSEMBLY 24V
13	406470	O-RING	67	2992015	TUBE W/BEARING RACE ASSEMBLY 18" ITEMS 67,68	121	2265105 PAD- INSULATED
14	406033	REAR ENDBELL		2992016	TUBE W/BEARING RACE ASSEMBLY 24" ITEMS 67,68	122	2332103 SCREW-6-20 X 3/8" (2 REQ'D)
14A	406600	FLANGE BEARING (SERVICE ONLY)	68	2272066	TUBE OUTER-18" 4 HOLES ORDER 66	123	2372100 SCREW-8-18X 5/8" (2 REQ'D)
15	406461	SEAL		2272067	TUBE OUTER-24" 4 HOLES ORDER 66	124	2301710 WASHER- INSULATED (2 REQ'D)
16	406471	SEAL- CUP	69	2266260	BEARING RACE	125	2261215 WIRE HARNESS 5'
17	405462	O-RING —THRU BOLT(2 REQ'D)	69A	2266220	BEARING RACE		2261216 WIRE HARNESS 7' OPTIONAL
18	406353	THRU BOLT (2 REQ'D)	70	2266000	BEARING BALL-STEEL (2 REQ'D)	126	2267500 CABLE ASSEMBLY-RIGHT 5'
19	2099051	MOTOR-ASSEMBLY 42AT	71	2266115	BEARING CONE		2267501 CABLE ASSEMBLY-RIGHT 7' OPTIONAL
	2099056	MOTOR-ASSEMBLY 48AT	72	2771615	COLLAR KIT ITEMS 73,74	127	2267510 CABLE ASSEMBLY-LEFT 5'
20	2032063	TUBE- COMPOSITE 42"	*73	2261615	COLLAR (2 REQ'D) ORDER 72		2267511 CABLE ASSEMBLY-LEFT 7' OPTIONAL
	2032064	TUBE- COMPOSITE 48"	*74	2263450	SCREW-10-24 X 7/8" (2 REQ'D) ORDER 72	128	2265430 CABLE JACKET 5'
	2032065	TUBE- COMPOSITE 54"	75	2260265	COVER-CONTROL BOX		2265431 CABLE JACKET 7' OPTIONAL
21	2091150	PROP (WEEDLESS WEDGE)	76	2301310	SCREW-8-18 X 1/2" (4 REQ'D)	129	2265110 BOOT- CONTROL BOX
22	2051700	LOCKWASHER-PROP	77	2265523	DECAL-COVER 42AT	130	2265115 BOOT- FOOT PEDAL BASE
23	2053100	NUT-PROP		2265524	DECAL-COVER 48AT	131	2262113 SCREW-8-18 X 1/2" (2 REQ'D)
24	2092600	PIN-DRIVE	78	2260150	POINTER DISC TRANSLUCENT RED	132	2261900 BRACKET-CONDUIT
28	2991957	BOWGUARD MOUNT ASSEMBLY (42" ONLY)	79	2265800	DECAL-INDICATOR	133	2301310 SCREW-8-18 X 1/2" (2 REQ'D)
	2991966	BOWGUARD MOUNT ASSEMBLY	80	2262530	CONTROL BOX	134	2263210 BRACKET-CONDUIT ADJUSTMENT
29	2771921	BRACKET ASSEMBLY BWG- INCLUDES 29A- 37	81	2262109	SCREW-8-32 X 1/2" (3 REQ'D)	135	2262720 SPRING-CONDUIT ADJUSTMENT
*29A	2261921	BRACKET BASE- LEFT- ORDER 29	82	2267800	GEAR-INDICATOR (3 REQ'D)	136	2263460 SCREW-1/4-20 X 2"
*30	2261931	BRACKET BASE- RIGHT- ORDER 29	83	2262220	INDICATOR-DRIVE	137	2261226 LEADWIRE-BATTERY
*31	2261530	SPRING SLEEVE- LOWER- ORDER 29	84	2261905	BRACKET/INDICATOR	139	2256300 TIE WRAP-5.5" BLACK
*32	2261520	SPRING SLEEVE- UPPER- ORDER 29	85	2301310	SCREW-8-18 X 1/2"	140	2263205 CLAMP-LEADWIRE
*33	2262700	SPRING- BREAK AWAY- ORDER 29	86	2264015	LIGHT/INDICATOR	141	2332101 SCREW-6-20 X 3/8" (2 REQ'D)
*34	2263470	SCREW 1/4- 20 X 1-3/4" (4 REQ'D) ORDER 29	87	2263201	CLAMP-WIRE HARNESS	142	2263200 CLAMP-WIRE HARNESS (3 REQ'D)
*35	2262800	TENSION BLOCK ORDER 29	88	2301310	SCREW-8-18 X 1/2"	143	2332103 SCREW-6-20 X 3/8 (3 REQ'D)
*36	2263100	NUT- INSERT ORDER 29	89	2355410	SHRINK TUBE-3/8" OD X 2" (2 REQ'D)	144	2260315 CONNECTING WIRE-7-1/2"
*37	2267300	BUSHING (2 REQ'D) ORDER 29	90	2232360	PULLEY- CABLE DRUM	145	2260310 CONNECTING WIRE-15-1/2"
38	2264201	ARM-UPPER (42" ONLY)	91	2261730	WASHER-NYLON	146	2260320 CONNECTING WIRE-12"
	2264211	ARM-UPPER	92	2776204	TOP BEARING RACE ASSEMBLY ITEMS 93, 94	147	2254031 SWITCH- MOM/OFF/CON
39	2265120	BUMPER (UPPER ARM)	*93	2267805	PINION DRIVE ORDER 92	148	2266410 COVER PLATE
40	2774304	ARM ASSEMBLY-LOWER (42" ONLY) INCL 44,45-53,61	*94	2266246	BEARING RACE- (TOP) ORDER 92	149	2332103 SCREW-6-20 X 3/8" (6 REQ'D)
	2774307	ARM ASSEMBLY-LOWER INCLUDES 44,45-53,61	95	2263410	SCREW-8-32 X 5/16" (2 REQ'D)	150	2994811 BAG ASSEMBLY
41	2263900	MOTOR REST	*96	2992018	FOOT PEDAL ASSEMBLY 12V	*150A	2153501 BOLT-MOUNTING ORDER (6 REQ'D) 147
42	2251941	BOW PLATE (42" ONLY)	*	2992019	FOOT PEDAL ASSEMBLY 24V	*150B	21S1726 WASHER-5/16" ORDER (6 REQ'D) 147
	2251952	BOW PLATE	97	2790002	FOOT PEDAL- PLUG ASSEMBLY	*150C	2153100 NUT-5/16"- MOUNTING (6 REQ'D) ORDER 147
43	2293801	TUBE LOCK- D	*98	2263700	PUSH-BUTTON FOOT PEDAL	*150D	2301720 WASHER- RUBBER (6 REQ'D) ORDER 147
44	2260506	HINGE-PIN	99	2302732	SPRING-LOWER PEDAL	151	2090700 RING TERMINALS (2 REQ'D)
45	2150400	PULL-GRIP	101	2264023	SWITCH- SEALED ASSEMBLY	152	2090620 CONNECTOR CABLE 24V ONLY
46	2236000	BEARING NYLINER (2 REQ'D)	103	2262114	SCREW-MOUNTING/SWITCH (2 REQ'D)		
47	2303431	SCREW-1/4-20 X 5/8" (4 REQ'D)	104	2233100	NUT-SWITCH MOUNT (2 REQ'D)		
48	2293511	BOLT-UPPER ARM (4 REQ'D)	105	2260160	KNOB- SPEED CONTROL		
49	2293500	BUSHING-SHOULDER (UPPER ARM) (4 REQ'D)	106	2263000	E-RING		
50	2152610	SPRING-PIN (LOCKBAR)	107	2774500	FOOT PEDAL BASE ASSEMBLY INCLUDES 107A,112		
51	2233600	LOCK BAR- BOW MOUNT	107A	2264500	FOOT PEDAL BASE ORDER 107		
52	2152700	SPRING-LOCKBAR	108	2375400	SHRINK TUBE 1/4 OD X1-3/4"		

* This item is part of an assembly. This item cannot be sold separately due to machining and /or assembly that is required.

42AT:



48AT:

