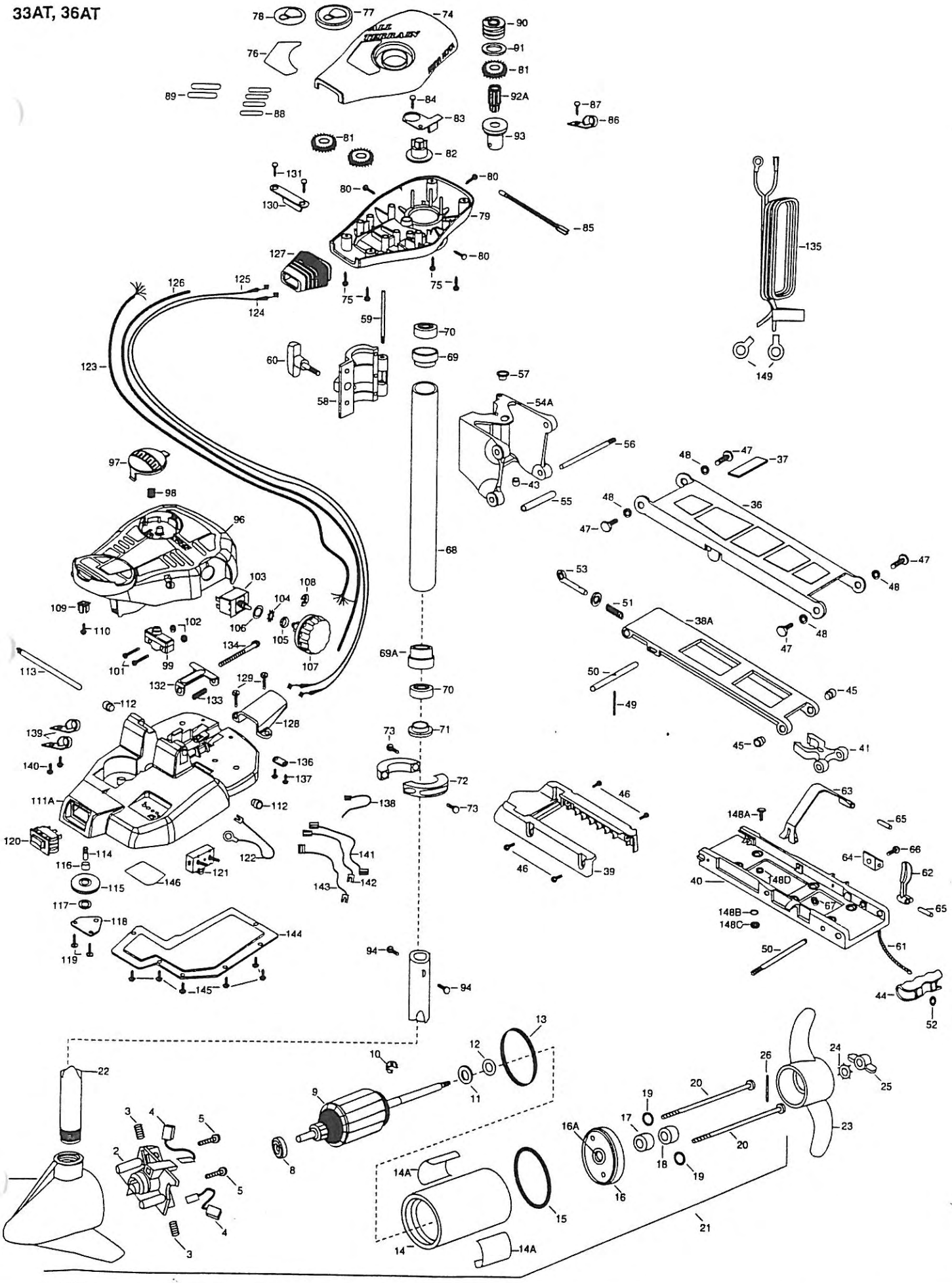


33AT, 36AT



2	406404	BRUSH PLATE ASSEMBLY	58	2261821	HINGE DOOR	111	2774500	FT PEDAL BASE ASSEMBLY INCLUDES 111A,111B
3	406081	BRUSH SPRING (2 REQ'D)	59	2262640	PIN-HINGE DOOR	*111A	2264500	FOOT PEDAL BASE
4	406072	BRUSH ASSEMBLY (2 REQ'D)	60	2260180	KNOB-HINGE COVER	112	2236000	BEARING- NYLINER (2 REQ'D)
5	406341	BRUSH PLATE SCREW (2 REQ'D)	61	2251600	ROPE- 48"	113	2260510	PIN-PIVOT- FOOT PEDAL
8	406010	BALL BEARING	62	2267200	LATCH LEVER	*114	2260515	PIN-PULLEY- AXLE
9	405204	ARMATURE ASSEMBLY	63	2263800	STRAP-HOLD DOWN	115	2262300	PULLEY- FOOT PEDAL
10	405300	E-RING	64	2261910	BRACKET- HOLD DOWN STRAP	116	2260000	BEARING- PULLEY
11	406170	THRUST WASHER- STEEL (AS REQ'D)	65	2260500	PIN-ROLL LATCH LEVER (2 REQ'D)	117	2261705	WASHER- NYLATRON
12	405171	THRUST WASHER- NYLON (AS REQ'D)	66	2263442	SCREW 10-24 X 7/8"	118	2266400	COVER-PULLEY
13	406480	GASKET	67	2333101	NUT-HEX	119	2301310	SCREW-8-18 X 1/2" (2 REQ'D)
14	405257	CENTER SECTION W/MAGNETS	68	2992015	TUBE W/BEARING RACE ASSEMBLY 18"	120	2254031	SWITCH-MOM/OFF/CON
14A	2066606	DECAL- MOTOR RED (2 REQ'D)		2992016	TUBE W/BEARING RACE ASSEMBLY 24"	121	2268200	CIRCUIT BREAKER-30AMP
15	406460	O-RING	68A	2272066	TUBE OUTER-18" 4 HOLES ORDER 68	122	2260601	WIRE CONNECTING-10GA.
16	406032	REAR ENDBELL		2272067	TUBE OUTER-24" 4 HOLES ORDER 68	123	2261205	WIRE HARNESS 5'
16A	406600	FLANGE BEARING (SERVICE ONLY)	69	2266260	BEARING RACE		2261206	WIRE HARNESS 7'
17	406461	SEAL	69A	2266220	BEARING RACE	124	2267500	CABLE ASSEMBLY-RIGHT 5'
18	406471	SEAL- CUP	70	2266000	BEARING BALL-STEEL (2 REQ'D)		2267501	CABLE ASSEMBLY-RIGHT 7'
19	401462	O-RING —THRU BOLT (2 REQ'D)	71	2266115	BEARING CONE	125	2267510	CABLE ASSEMBLY-LEFT 5'
	405352	THRU BOLT (2 REQ'D)	72	2261615	COLLAR (2 REQ'D)		2267511	CABLE ASSEMBLY-LEFT 7'
20	2069020	MOTOR-ASSEMBLY	73	2263450	SCREW-10-24 X 7/8" (2 REQ'D)	126	2265430	CABLE JACKET 5'
21	2069021	MOTOR-ASSEMBLY 48"	74	2260264	COVER-CONTROL BOX		2265431	CABLE JACKET 7'
22	2032062	TUBE- COMPOSITE 36"	75	2301310	SCREW-8-18 X 1/2" (4 REQ'D)	127	2265110	BOOT- CONTROL BOX
	2032063	TUBE- COMPOSITE 42"	76	2265525	DECAL-COVER	128	2265115	BOOT- FOOT PEDAL BASE
	2032064	TUBE- COMPOSITE 48"	77	2260150	POINTER DISC TRANSLUCENT RED	129	2262113	SCREW-8-18 X 1/2" (2 REQ'D)
23	2061125	PROP (WEEDLESS WEDGE)	78	2265800	DECAL-INDICATOR	130	2261900	BRACKET-CONDUIT
24	2051700	LOCKWASHER-PROP	79	2262530	CONTROL BOX	131	2301310	SCREW-8-18 X 1/2" (2 REQ'D)
25	2053100	NUT-PROP	80	2262109	SCREW-8-32 X 1/2" (3 REQ'D)	132	2263210	BRACKET-CONDUIT ADJUSTMENT
26	2092600	PIN-DRIVE	81	2267800	GEAR-INDICATOR (3 REQ'D)	133	2262720	SPRING-CONDUIT
35	2991954	STD-BOWMOUNT ASSEMBLY 36", 42",	82	2262220	INDICATOR-DRIVE	134	2263460	SCREW-1/4-20 X 2"
	2991952	STD-BOWMOUNT ASSEMBLY 48"	83	2261905	BRACKET/INDICATOR	135	2261224	LEADWIRE-W/RING TERMINALS
36	2264201	ARM-UPPER 36", 42"	84	2301310	SCREW-8-18 X 1/2"	136	2263205	CLAMP-LEADWIRE
	2264211	ARM-UPPER, 48"	85	2264015	LIGHT/INDICATOR	137	2332103	SCREW-6-20 X 3/8" (2 REQ'D)
37	2265120	BUMPER (UPPER ARM)	86	2263200	CLAMP-WIRE HARNESS (3 REQ'D)	138	2256300	TIE WRAP-5.5" BLACK
38	2774310	ARM-LOWER ASSEMBLY 36", 42"	87	2301310	SCREW-8-18 X 1/2"	139	2263201	CLAMP-WIRE HARNESS (2 REQ'D)
	2774306	ARM-LOWER ASSEMBLY, 48"	88	2375400	SHRINK TUBE-1/4 OD X 1-3/4" (4 REQ'D)	140	2332103	SCREW-6-20 X 3/8 (2 REQ'D)
*38A	2254342	ARM-LOWER 36", 42" ORDER 38 INCL 38A,44,49,50	89	2355410	SHRINK TUBE-3/8 OD X 2" (2 REQ'D)	141	2260300	CONNECTING WIRE-14"
*38B	2254332	ARM-LOWER 48" ORDER 38 INCL 38B,44,49,50	90	2232360	PULLEY-CABLE DRUM	142	2260310	CONNECTING WIRE-15-1/2"
39	2263900	MOTOR REST	91	2261730	WASHER-NYLON	143	2260320	CONNECTING WIRE-12"
40	2251941	BOW PLATE	92	2776203	TOP BEARING RACE ASSEMBLY INCLUDES 92A,93	144	2266410	COVER PLATE
41	2293801	TUBE LOCK	*92A	2267805	PINION DRIVE	145	2332103	SCREW-6-20 X 3/8" (6 REQ'D)
*42	2264705	INSERT-HINGE BASE	*93	2266245	BEARING RACE- (TOP)	146	2265607	DECAL
43	2260506	HINGE-PIN	94	2263410	SCREW-8-32 X 5/16" (2 REQ'D)	147	2994803	BAG ASSEMBLY
44	2150400	PULL-GRIP	*95	2992017	FOOT PEDAL ASSEMBLY	*148A	2153501	BOLT-MOUNTING ORDER (4 REQ'D) 147
45	2236000	BEARING NYLINER (2 REQ'D)	96	2790002	FOOT PEDAL- PLUG ASSEMBLY	*148B	21S1726	WASHER-5/16" ORDER (4 REQ'D) 147
46	2303430	SCREW-1/4-20 X 5/8" (4 REQ'D)	97	2263700	PUSH-BUTTON FOOT PEDAL	*148C	2153100	NUT-5/16"- MOUNTING (4 REQ'D) ORDER 147
47	2293511	BOLT-UPPER ARM (4 REQ'D)	98	2302732	SPRING-LOWER PEDAL	*148D	2301720	WASHER- RUBBER (6 REQ'D) ORDER 147
48	2293500	BUSHING-SHOULDER (UPPER ARM) (4 REQ'D)	99	2264023	SWITCH- SEALED ASSEMBLY	149	2090700	RING TERMINALS (2 REQ'D)
49	2152610	SPRING-PIN (LOCKBAR)	101	2262114	SCREW-MOUNTING SWITCH (2 REQ'D)			
50	2233600	LOCK BAR- BOW MOUNT	102	2233100	NUT-SWITCH MOUNT (2 REQ'D)			
51	2152700	SPRING-LOCKBAR	103	2264025	SWITCH-5 SPEED			
52	2151700	WASHER-EYE SHAFT (6 REQ'D)	104	2261701	LOCKWASHER-STAR			
53	2153600	EYE SHAFT	105	2263105	NUT-HEX			
54	2771812	HINGE BASE ASSEMBLY INCLUDES 42,54A,57	106	2261715	SPACER-SWITCH 5 SP MODELS			
54A	2261811	HINGE BASE- ORDER 54	107	2260170	KNOB-SPEED CONTROL (5 SPEED)			
55	2231570	SLEEVE ROLLER	108	2263000	E-RING			
56	2230500	PIN-HINGE (BOW PLATE)	109	2260730	CONNECTOR 1/4 MALE			

* This item is part of an assembly. This item cannot be sold separately due to machining and /or assembly that is required.

30AT, 33AT, 36AT:

