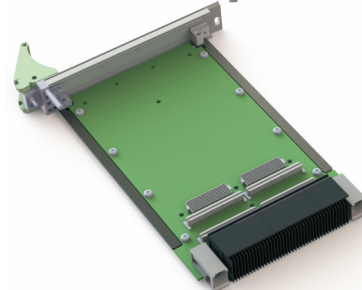


THE OPENCOTS CONVECTION CARD EDGE KIT EMPLOYS COST-EFFECTIVE, STANDARD CARD EDGES THAT CAN BE RAPIDLY DEPLOYED FOR PCB LAYOUTS DESIGNED FOR CONDUCTION CARDS THAT USE SECONDARY SIDE WEDGE LOCKS.

THE CARD EDGE KIT MOUNTS TO THE STANDARD WAVE THERM SECONDARY SIDE JUSTIFIED WEDGE LOCK PCB LAYOUTS AND ALLOWS FOR A STANDARD IEEE FRONT PANEL TO BE MOUNTED TO THE CARD, PROVIDING A ROBUST AND EASILY DEPLOYED SOLUTION.

THE CARD EDGE KITS ARE DESIGNED FOR LAYOUTS USING, .225", .250", .300" AND .365" WIDE SOLIDWEDGE CLEARANCES, BASED ON STANDARD WAVE THERM PCB LAYOUTS FOR SECONDARY SIDE RETAINERS.

OpenCOTS™



OC-EK-225-BA

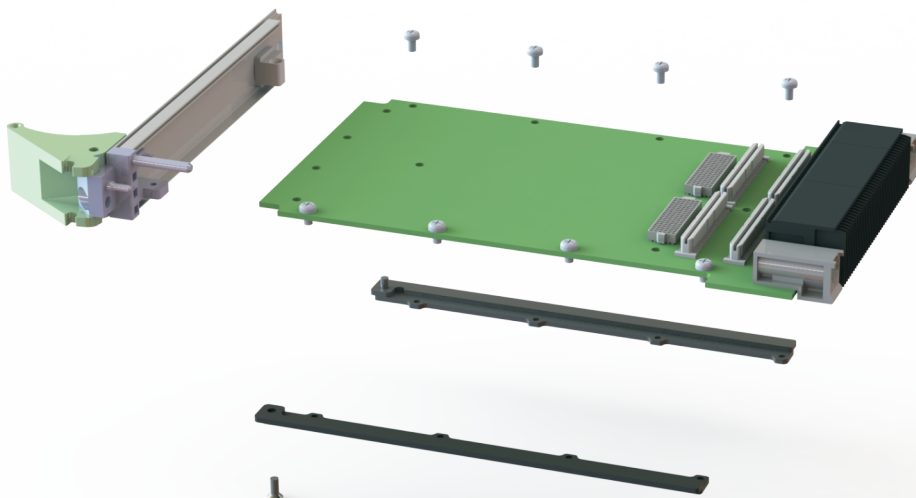
ORDERING INFORMATION:

SELECT THE CARD EDGE RAIL KIT BASED ON THE WIDTH OF THE SOLIDWEDGE AND THE PLATING REQUIRED. THE CARD EDGE KIT INCLUDES A PAIR OF MOUNTING RAILS AND ALL SCREWS NEEDED TO MOUNT THE RAILS TO THE PCB.

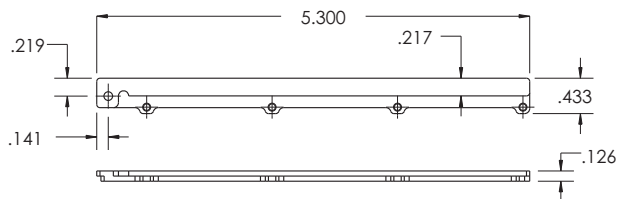
PART

OC-EK-225-XX (USE W/ .225" PCB LAYOUT)
OC-EK-250-XX (USE W/ .250" PCB LAYOUT)
OC-EK-300-XX (USE W/ .300" PCB LAYOUT)
OC-EK-365-XX (USE W/ .365" PCB LAYOUT)

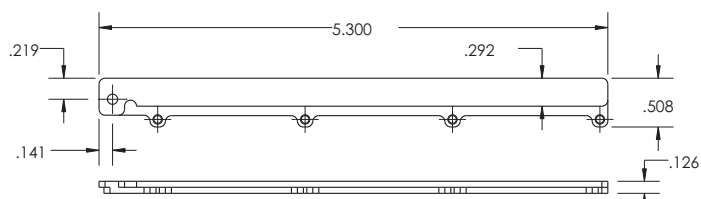
XX - SEE PLATING TABLE BELOW



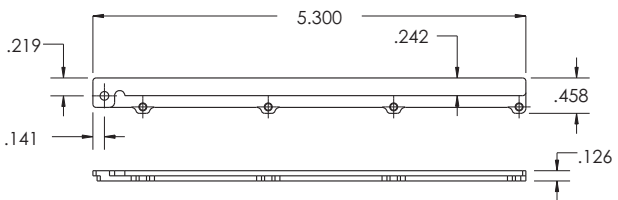
OC-EK-225-XX USE WITH .225" LAYOUT



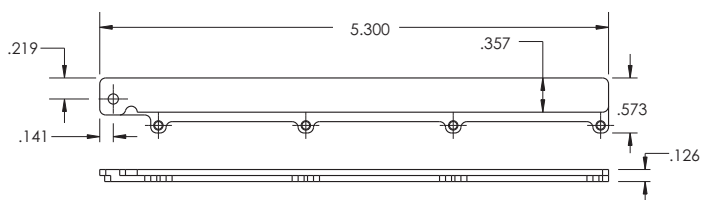
OC-EK-300-XX USE WITH .300" LAYOUT



OC-EK-250-XX USE WITH .250" LAYOUT



OC-EK-365-XX USE WITH .365" LAYOUT



MATERIAL:

ALUMINUM AL6061-T6

FINISH (-XX):

BA - BLACK ANODIZE PER MIL-A-8625, TYPE II, CLASS 2
BH - HARD BLACK ANODIZE PER MIL-A-8625, TYPE III, CLASS 2
CC - CHEMICAL FILM PER MIL-C-5541, CLASS 1A, CLEAR
CG - CHEMICAL FILM PER MIL-C-5541, CLASS 1A, GOLD, NON-ROHS
EN - ELECTROLESS NICKEL PER MIL-C-26074, CLASS 4, GRADE B, BRIGHT

OpenCOTS™