

LED T8 TUBES SERIES

Product Description

Lumilum LED T8 Tubes use the latest technology for fluorescent tube replacement, achieving unmatched energy savings of over 50% without compromising brightness and color rendering. These tubes have a unique design to maximize the aluminum heat sink and have a shatterproof polycarbonate lens (clear or frosted). Available in several standard lengths and power output presentations.

Installation is easy, these bulbs use the same terminal connections as the existing fluorescent tubes and have a universal power supply driver that eliminates the need for a ballast. To replace your old fluorescents with new energy saving LED tubes you simply bypass the ballast and remove the starter.

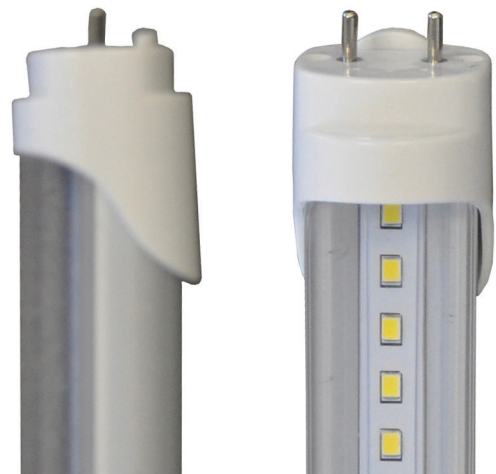
Project
Location
Prepared by
Comments

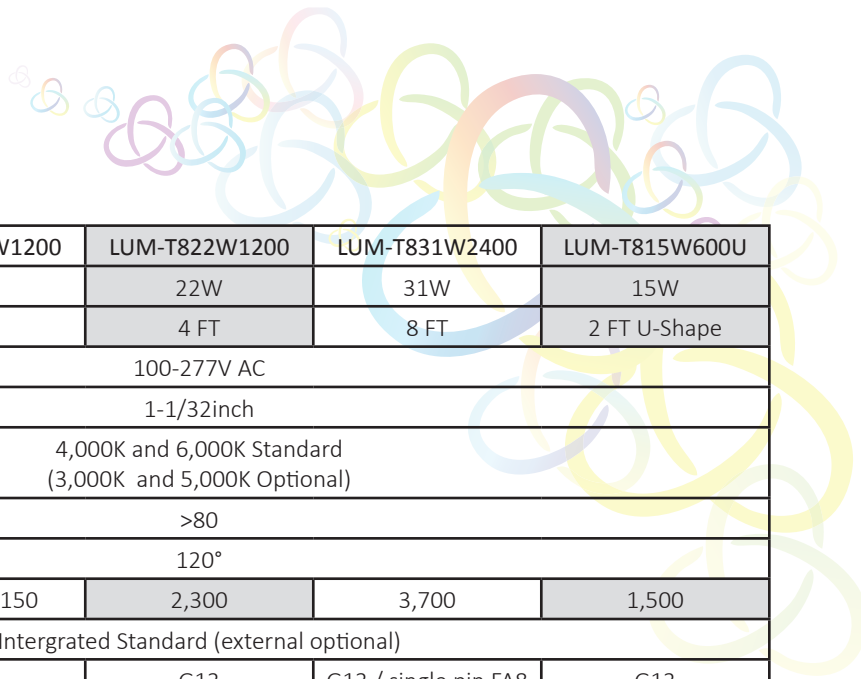
Product Features

- Energy savings of >50% when compared to fluorescent tubes
- Life time L70: 50,000hrs
- Universal voltage range 100~277VAC
- Color Rendering Index: >80 CRI
- All temperature instant on
- Internal driver, no external ballast or starter needed
- Polycarbonate lens available in clear and frosted
- Easy installation, instructions included
- Government incentives and rebates available in some areas
- Mercury, Lead, and UV free
- UL Listed and DLC compliant

Ideal Uses:

- Offices
- Retail stores
- Universities and schools
- Hospitals and clinics
- Sports centers
- Industrial
- Undercover/multistory parking





Technical Specifications

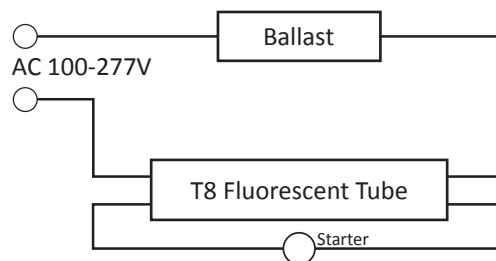
Model:	LUM-T810W600	LUM-T818W1200	LUM-T822W1200	LUM-T831W2400	LUM-T815W600U
Power Consumption	10W	18W	22W	31W	15W
Length	2 FT	4 FT	4 FT	8 FT	2 FT U-Shape
Voltage	100-277V AC				
Diameter	1-1/32inch				
Color Temp. (CCT) ±280K	4,000K and 6,000K Standard (3,000K and 5,000K Optional)				
CRI	>80				
Beam Angle	120°				
Lumens (lm)±10%	1,050	2,050 - 2,150	2,300	3,700	1,500
Driver	Intergrated Standard (external optional)				
Socket	G13	G13	G13	G13 / single pin FA8	G13

Instructions:

Steps:

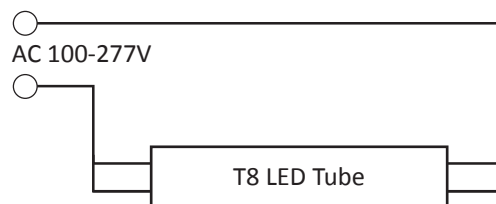
1. Disconnect power supply.
2. Remove the existing flourescent tubes from the fitting.
3. Remove the starter (if fitted) and discard.
4. Disconnect wires from the ballast and connect them together thereby bypassing the ballast. Remove and discard the ballast.
5. Check that all connections are properly insulated.
6. Fit the LED tubes.
7. Restore power and turn on.

Before:



Light fitting circuit before modification

After:



Light fitting circuit after modification

Lumilum

www.lumilum.com

Phone: (855) LUM-ILUM / (855) 586-4586

Email: support@lumilum.com

Corporate Office

12060 SW 129 Ct. Suite 101

Miami, FL 33186

Phone: (305) 233-2844