

## 1-Port KVM Switch over IP TK-IP101 (v1.0R)



The 1-Port KVM Switch over IP (TK-IP101) provides cost effective remote server management for multiple users, regardless of server status. Eliminate the need to physically be in the server room to troubleshoot, reboot and edit pre-boot functions. Save resources and manage server and PC resources from around corner or around the world. Provides highly secure access to both Windows and Java-based clients. With up to 16 active user accounts the TK-IP101 supports 4 concurrent logins. An intuitive Web user interface provides controls from BIOS level functions to Windows based applications. Use the TK-IP101 with the TRENDnet's 8-Outlet Remote Power Controller (TK-RP08) to facilitate remote power cycling and rebooting.

## FEATURES

- Manage KVM switches and servers remotely over the Internet
- Centralize management of multiple servers when connected to a conventional KVM switch
- Save time and resources by managing resources remotely
- Multiple user access control
- Management of remote servers from BIOS level up to GUI level applications
- Ultra secure access with full 1024-bit PKI authentication and 256-bit SSL encryption
- Enjoy crisp 1600 x 1200 resolution
- Intuitive Web user interface permits upgrades and backups
- Supports user friendly Telnet sessions and FTP access
- Use with TRENDnet's TK-RP08 to control on/off power cycling of multiple devices remotely
- Works with LDAP, RADIUS and Active Directory Servers
- Ethernet RJ-45 and Serial PPP connections supported
- PPP connection over serial RS-232 interface with data rates up to 1 Mbps
- Works with Windows® and Java-based clients for cross-platform compatibility
- Low bandwidth Internet connections supported with JPEG compression
- 2-year warranty



## SPECIFICATIONS

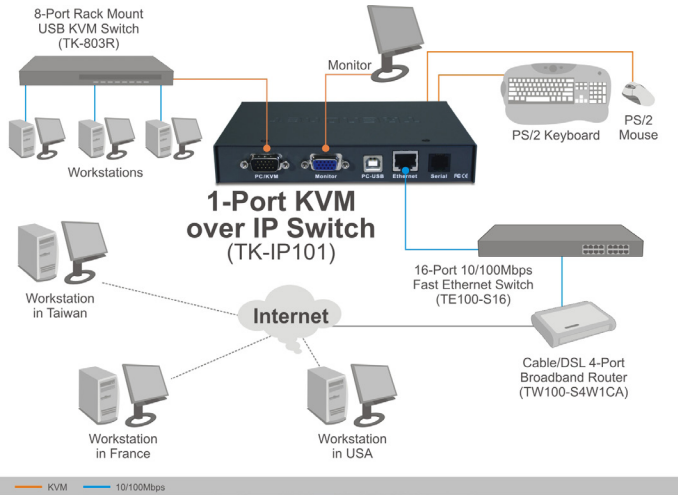
HARDWARE	
<b>Number Of Server Ports</b>	• 1 X
<b>Server Or KVM Port Connectors</b>	• 1x HDB 15-Pin Male + Special Cable Assembly Providing VGA, PS/2 Mouse And PS2 Keyboard Connectors. • 1 x USB Type B
<b>Remote Connections</b>	• Multiple Connections [Shared/Private/View Only Session]
<b>Viewer Session</b>	• Shared/View Only – Multiple Users/Private – 1 User
<b>Local Console Connectors</b>	• 1 x PS/2 Keyboard 6-Pin Mini Din Female • 1 x PS/2 Mouse 6 Pin Mini Din Female • 1 x VGA HDB 15-Pin Female
<b>PC Port Connectors</b>	• 1 X HDB15 (Integrated With PS/2 Keyboard And PS/2 Mouse) • 1 X USB Type B (For USB Keyboard And USB Mouse)
<b>Digital Connector</b>	• Rj-45
<b>Ethernet Interface</b>	• 10/100 Base-T Connection With Auto-Sensing
<b>Serial Console Port (Front)</b>	• RJ-12 Connector/115200 Bps Max - Used Only For Console Management
<b>Serial Control Port (Back)</b>	• RJ-12/1Mbps High-Speed Serial For Connect To External Modem/Power Control Device
<b>Server Control Remote Interface</b>	• Win32 Viewer/JAVA Viewer
<b>Management</b>	• With Any Browser Connected To The Embedded Web Server Via HTTPS Secure Connection
<b>Supported OS</b>	• Windows 98(SE)/ME/2000/XP/2003 Server/Vista/7/8/8.1
<b>Security</b>	• SSL, Encryption With 256-Bit Ephemeral Keys • User Authentication Based On Password And PKI Certificates
<b>Video Resolution</b>	• 1600 x 1200 Max.
<b>Keyboard Emulation</b>	• PS/2 And USB
<b>Mouse Emulation</b>	• PS/2 and USB
<b>Remote Power On/Off</b>	• Yes*
<b>Power Input</b>	• DC 9V 2A
<b>Operation Temperature</b>	• 0 ~ 50°C
<b>Storage Temperature</b>	• - 20 ~ 60°C
<b>Humidity</b>	• 0~90% RH, Non-Condensing
<b>Housing</b>	• Metal/0U
<b>Dimension (L x W x H)</b>	• 16 x 11.5 x 2.5 cm
<b>Safety/EMI Certification</b>	• FCC, CE

# 1-Port KVM Switch over IP

## TK-IP101 (v1.0R)



### NETWORKING SOLUTION



### PACKAGE CONTENTS

TK-IP101

Multi-Language Quick Installation Guide

CD-ROM (User's Guide)

1 x PS/2 KVM Cable (1.5 m/5 ft.)

1 x USB Type B Cable (1m/3.3 ft.)

1 x RJ-12 to Female Serial Port Cable (1m/3.3 ft.)

1 x RJ-12 to male Serial Port Cable (1m/3.3 ft.)

1 x RJ-12 to Parallel Port Cable (1m/3.3 ft.)

1 x Power adapter (9 V DC 2 A)

### RELATED PRODUCTS

TK-RP08	8-Outlet Remote Power Controller
TK-804R	8-Port USB/PS/2 Rack Mount KVM Switch w/ OSD
TK-1604R	16-Port USB/PS/2 Rack Mount KVM Switch w/ OSD

### CONTACT INFORMATION

**TRENDnet**

20675 Manhattan Place, Torrance, CA 90501 USA

Tel: 1-310-961-5500

Fax: 1-310-961-5511

Web: [www.trendnet.com](http://www.trendnet.com)

Email: [sales@trendnet.com](mailto:sales@trendnet.com)

**1-888-326-6061**

