

MANUAL

THE MOST ADVANCED MONITOR SECURITY & ENERGY SAVING DEVICE

Screen Keeper will automatically switch off your monitor when you are away from your computer. This Eco-Friendly product also doubles as an energy saving device to reduce your carbon footprint.



Index

- 1 How it works
- 2 Go Green & reduce your carbon footprint
- 3 Be ahead of your competition
- 4 Distance settings
- 5 Installation guide
- 6 Operational reference
- 7 Specifications



How it works



Designed using 2.4GHz short range technology, Screen Keeper will activate & lock your monitor if it detects you are away from your computer. When you return, the Screen Keeper will automatically turn your monitor back on.

The Screen Keeper Remote is a modern, stylish design that compliments any corporate look. You can attach it to your belt, pocket or simply hang it around your neck with your other ID badges & security cards.



IMPORTANT!

It is recommended that the USB Dongle is connected to an extension cable to avoid interference



For optimal performance:


- Ensure the Screen Keeper Remote has line of sight to the USB Dongle
- Plug the USB Dongle into an extension cable
- Hang the Screen Keeper Remote around your neck or clip onto the outside of your clothing
- Do not cover the Screen Keeper Remote or keep it in your pocket



Go Green & reduce your carbon footprint!

Screen Keeper is an Eco-Friendly energy saving device. Its main function is to protect your private information by turning off the monitor while you're away. This feature also allows it to double as an energy saving device.

Changing the settings to automatically turn off the monitor while you're away from your computer, will effectively reduce the power consumption of your PC.

 On a standard 50W* LCD Monitor, Screen Keeper saves money on electricity bills while also reducing your Co2 emissions equivalent to planting 65 pine trees per year (see below graph).

How to change the settings:

Using your mouse, right click the Screen Keeper icon in the bottom right hand side of your monitor. Click "Options", then select "Energy Saving Mode" and adjust from "Screen Lock" to "Power Off".

ENERGY SAVINGS WHILE USING SCREEN KEEPER					
LCD monitor power consumption (W*)	Average hours away from computer	Working days/year	Power saving/year (KWh [^])	CO ₂ emissions/year (5kg CO ₂ /KWh [^])	New pine trees required to reduce equivalent CO ₂ emissions each year
50	3.0	240	36.0	180.0	65
Using a 50W* LCD Monitor					
80	3.0	240	57.6	288.0	104
Using a 80W* LCD Monitor					

* Refers to Watts

[^] Refers to Kilowatt Hours

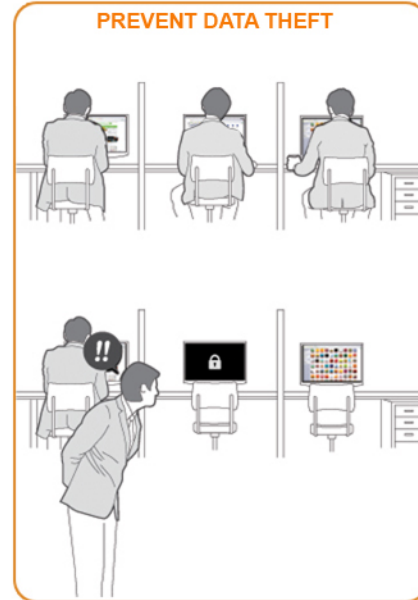
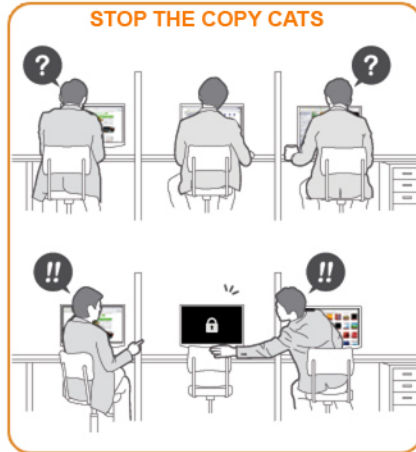


Be ahead of your competition!

Anyone who has ever put their blood, sweat & tears into a project, only to find the idea has been copied or stolen knows why the Screen Keeper is a critical component to success.

Sometimes your greatest competitor is sitting right next to you.

Screen Keeper will protect your work from those spying eyes!

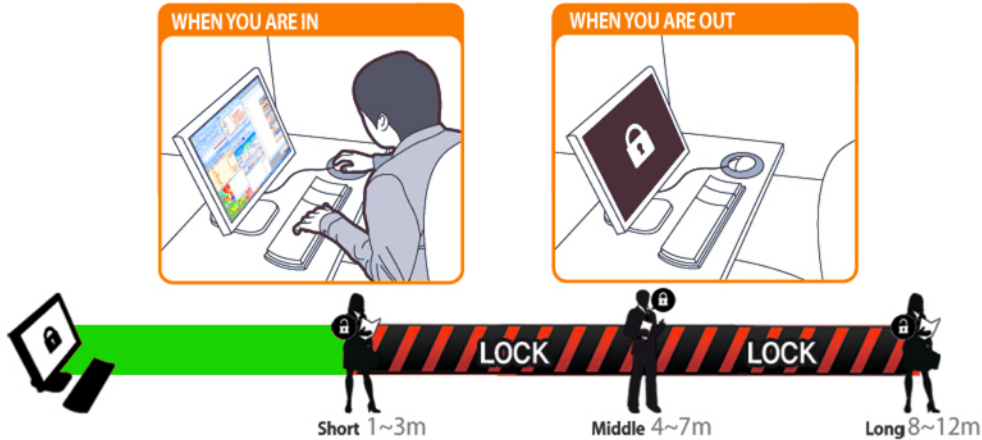


PROTECT YOUR PRIVACY

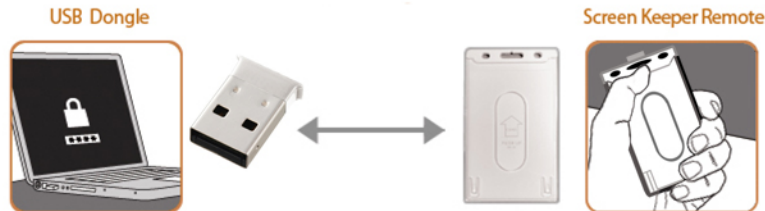
Screen Keeper automatically locks your monitor while you're away, protecting your confidential work.



Distance settings



Manually adjust the distance from Short, Medium or Long



Installation guide



1
Open the case and take out the USB dongle and Remote



2
Visit the website at: www.screenkeeper.com



3
Download the **Manual**



4
Read the **Manual**



5
Download and install the 'setup.exe' file



6
ENTER YOUR PASSWORD
Enter your password with 4-8 digits alphanumerically and confirm it



7
Right click your mouse on the **icon** in the right bottom tray of your screen then click 'Options'



8
LEAD TIME FOR SCREEN LOCK
Select the lead time 5-9 seconds for the screen to lock



9
LEAD TIME FOR SCREEN UNLOCK
Choose the lead time for the screen lock release 0-9 seconds. Default is 0 seconds



10
SELECTION FOR ENERGY SAVING MODE
Set the time interval for the transition from "Screen Saver" to "Monitor Energy Saver" mode



11
SCREEN SAVER ENABLE
Choose the Screen Saver option, its password protection & time out. Its default is "Enable"



12
Switch on the Screen Keeper Remote



13
Plug the USB dongle into your PC's USB port preferably using a USB hub or extension cable



14
safely secured!
Check the monitor goes into "Screen Saver" mode by switching off the Remote



15
Switch the Screen Keeper Remote back on & carry it with you



Operational reference

1 Product Safety

The Screen Keeper components are not water proof. Please keep them away from moisture at all times.

2 Remote Sleep Mode

The Screen Keeper Remote will automatically go into sleep mode when it has been inactive or away from your computer for more than one (1) hour. To reactivate your Screen Keeper Remote, simply switch it off for about three (3) seconds, then turn it back on.

3 Battery Maintenance

The batteries should last approximately 6 months. (Figures are based on an average usage of 8 hours operation per day during a standard 5 day working week). A red LED will blink 3 times when the batteries need to be replaced.

The Screen Keeper Remote is fitted with 2 x CR2016 batteries which can be easily replaced by removing the cover located on the back of the unit. Remove both old batteries & insert 2 x CR2016 batteries with the positive (+) facing up. For best performance, ensure replacement batteries are new & both are changed together. New batteries can be purchased from the distributor at www.dueltek.com.au

4 Adjusting the range / distance

Slide the switch on the back of your Screen Keeper Remote. It can be adjusted to Short (1-3 Metres), Medium (4-7 Metres) or Long (8-12 Metres). Changing to a longer distance can also increase consistency in rooms where there is a high level of interference.



5 Recommended system requirements to operate Screen Keeper

Operating System:

Windows XP SP3 (32 bit), Windows Vista (32 bit) or Windows 7 (32/64 bit)

Minimum System Requirements:

Intel Pentium 4 or higher processor; 1GB RAM; 10MB Free Hard Disk Space; Microsoft Internet Explorer 7.0 or later.



Specifications



System

Interface	USB
Requirement OS	Windows XP SP3 (32 bit); Windows Vista (32 bit) or Windows 7 (32/64 bit)
Recommended requirements	Intel Pentium 4 or higher processor, 1GB RAM 10MB free hard disk space Microsoft Internet Explorer 7.0 or later

Spec

Model	SK-03
Composition	Remote (SKR-03) and USB Dongle(SKD-01)
Frequency Range	ISM Band 2.4 GHz
Weight	30 g (Remote) / 5g (USB Dongle)
Size	57mm x 98mm x 6mm (Remote) / 14mm x 19mm x 5mm (Dongle)
Effective Coverage	Selectable 3 step 1~12m(short,middle,long)
Data Rate	2M bit/s Air Data Rate
Modulation	GFSK
Security	128 bit AES Encryption / Decryption
Battery Life of Remote	6 month referred to 8 hours per working day
Battery	2 x CR2016 Coin Cell

Intellectual Property

PATENT	10-0995583
CE ID	- / CE0678
FCC ID	YJH-SKR-03 / WEK-SKD-01
KCC ID	S99-SKR-03 / S99-SKD-01
IC ID	./ 9066A-SKD01
JMIC ID	./003WWA100720



For sales & service contact your nearest reseller:

Company Name:
Address:
City / Town
State
Phone:
Email:
Contact:

