

# INSTALLATION GUIDE

## THE MOST ADVANCED MONITOR SECURITY & ENERGY SAVING DEVICE

Screen Keeper will automatically switch off your monitor when you are away from your computer. This Eco-Friendly product also doubles as an energy saving device to reduce your carbon footprint.



# Index

- Page **1**    **Part 1: Visit either of these websites**
- Page **2**    **Part 2: Download Screen Keeper Software**
- Page **3**    **Part 3: Install Screen Keeper Software**
- Page **5**    **Part 4: Activate Screen Keeper**
- Page **7**    **Part 5: Adjust settings**



# Part 1

Visit either of these websites



[www.screenkeeper.com](http://www.screenkeeper.com)



[www.screenkeeper.com.au](http://www.screenkeeper.com.au)



## Part 2

# Download the Screen Keeper software



Setup Program

Manual

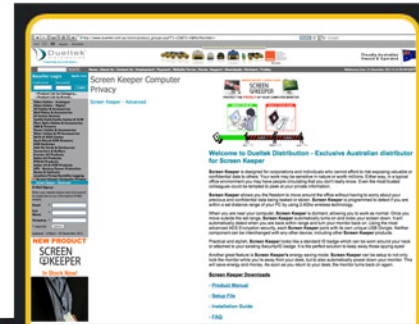
S/W Install Guide

FAQ

Gallery

Click the “Setup Program” button

Your download should begin automatically, but if it doesn't due to browser compatibility, a zip file can be downloaded from the distributor:  
[www.screenkeeper.com.au](http://www.screenkeeper.com.au)



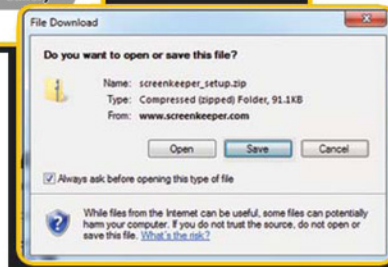
- Product Manual

- Setup File

- Installation Guide

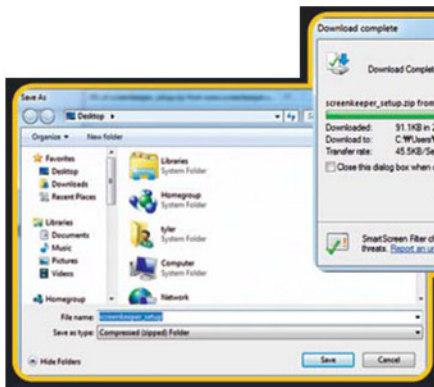
Click the “Setup File” link

When the pop up window appears, click the “Save” button



## Part 3

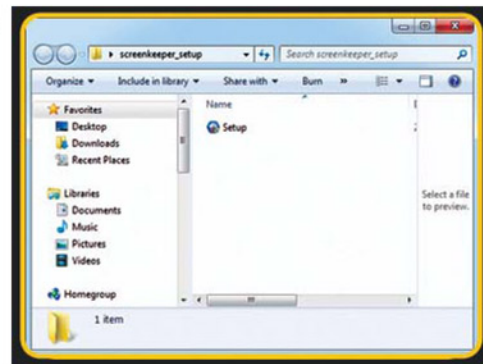
### Install the Screen Keeper software



**1**  
Select the folder where you want to save the file & click the "Save" button

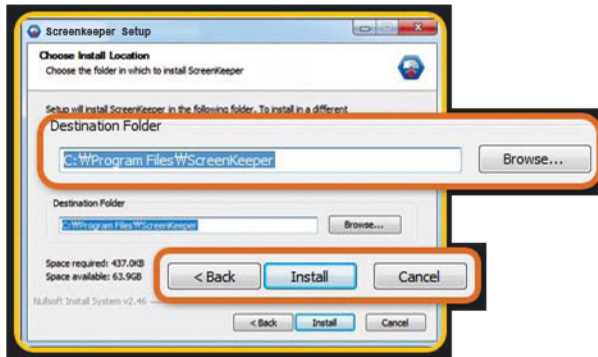


**2**  
When the download completes, double-click on the zip file & extract the file to the same folder



**3**  
Double-click on the extracted "Setup.exe" file

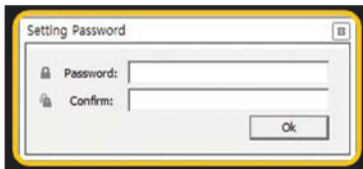




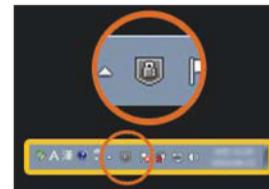
Select the folder where you want to save the file & click the “Install” button



Check the box “Run ScreenKeeper” then click the “Finish” button



Enter a password between 4-8 characters (alpha-numeric). Confirm by re-entering your password & click “OK” button



A grey Screen Keeper icon should now appear in the tray on the bottom right hand side of your monitor

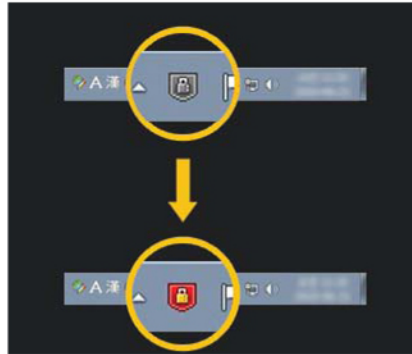


## Part 4

### Activate Screen Keeper



**1**  
Insert the USB Dongle into the computer - For best results use a USB extension cable.



**2**  
The Screen Keeper icon should now have changed colour to red. If it remains grey, repeat step one using a different USB port



**3**  
Your screen should now be locked with the Screen Keeper screen saver activated

**NOTE:** In some cases, you may need to restart your computer





**4**  
Switch on the  
Screen Keeper Remote



**5**  
The USB Dongle will detect the  
Remote and automatically  
unlock your monitor



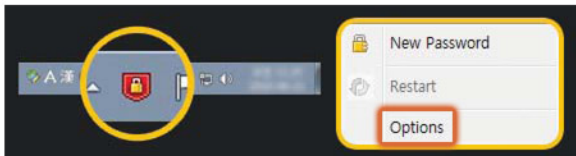
**6**  
The Screen Keeper icon, located  
in the bottom right hand side tray,  
should now be blinking indicating  
your Screen Keeper is activated



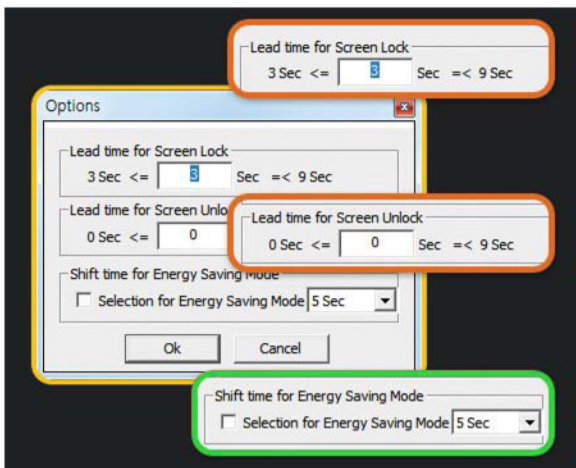


## Part 5

### Adjust settings



1 Click the Screen Keeper icon located in the tray at the bottom right hand side of your monitor & select “Options”



#### Lead time for Screen Lock:

2 Here you are able to change how long it takes for the Screen Keeper to activate when you leave your computer. The default time is 3 seconds

#### Lead time for Screen Unlock:

3 Here you are able to change how long it takes for the Screen Keeper to unlock when you return to your computer. The default time is 0 seconds

#### Shift time for Energy Saving Mode:

4 Adjust the screen lock to Power Off your monitor. The Default is 5 seconds. Other options: 30sec, 5min, 15min or 30min

