

# Lunar collection

Version 8.6

*A faux leather upholstery fabric  
for indoor seating*

Fire retardant  
Waterproof  
Hard wearing  
Anti-fungal  
Anti-bacterial  
Phthalate free  
REACH compliant

Lunar collection

**AGUA**  
UPHOLSTERY FABRICS

# Practical faux leather fabrics for the most demanding environments.

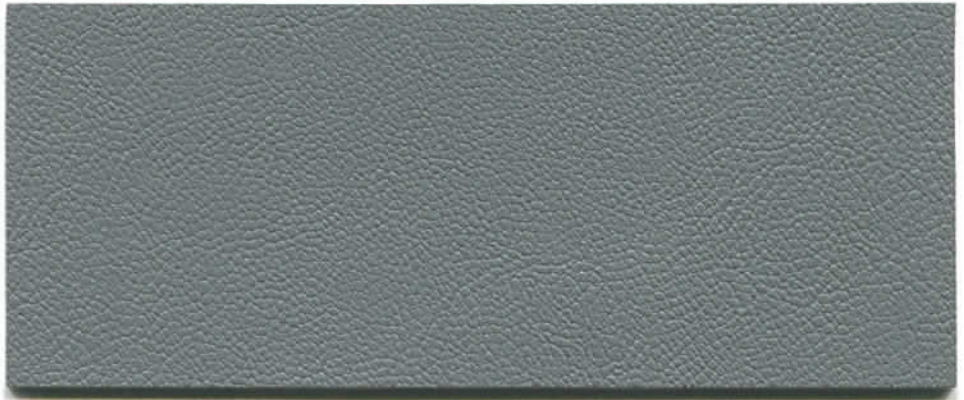
*Perfect for*  
Hotels/Leisure/  
Restaurants/  
Hospitality/  
Healthcare/  
Spas/Clubs/  
Cruise Liners

*Use for*  
Interior Seating  
Headboards  
Bed Bases

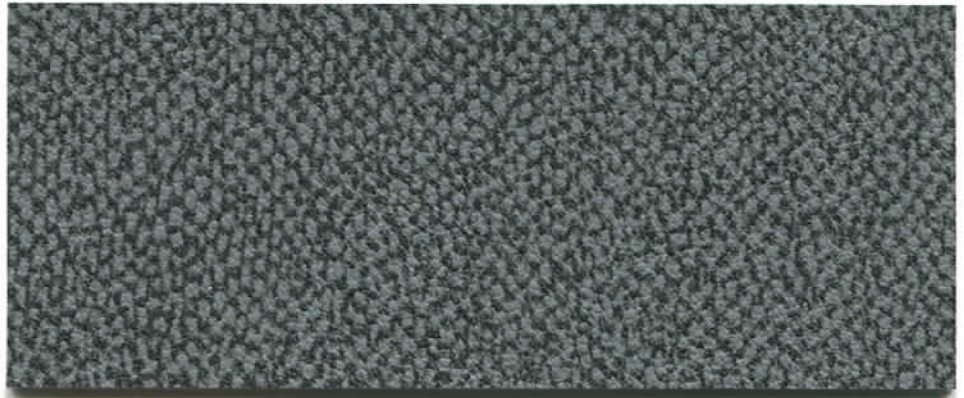


REACH Compliant

## Lunar



Scorpio Grey



Aquarius Grey



Scorpio Crimson



Scorpio Dark Grey



Scorpio Black





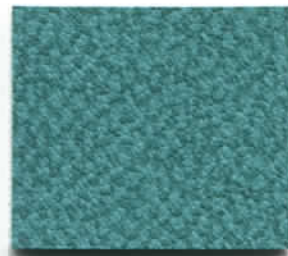
Scorpio Cream



Scorpio Teal



Aquarius Cream



Aquarius Teal



Scorpio Chestnut



Scorpio Emerald



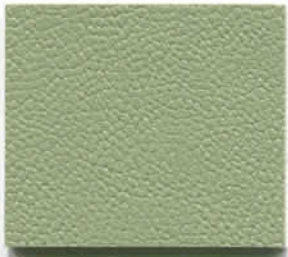
Aquarius Chestnut



Aquarius Emerald



Scorpio Dark Brown



Scorpio Apple



Aquarius Dark Brown



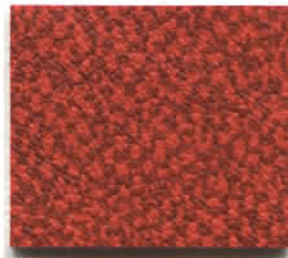
Aquarius Apple



Scorpio Terracotta



Scorpio Green



Aquarius Terracotta



Aquarius Green



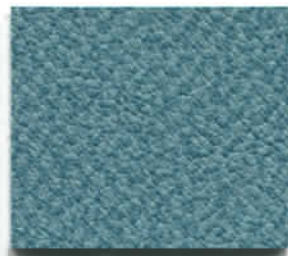
Scorpio Red



Scorpio Sky



Aquarius Red



Aquarius Sky



Scorpio Plum



Scorpio Cornflower



Aquarius Plum



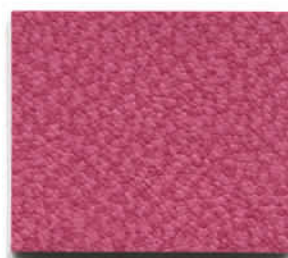
Aquarius Cornflower



Scorpio Rose



Scorpio Navy



Aquarius Rose

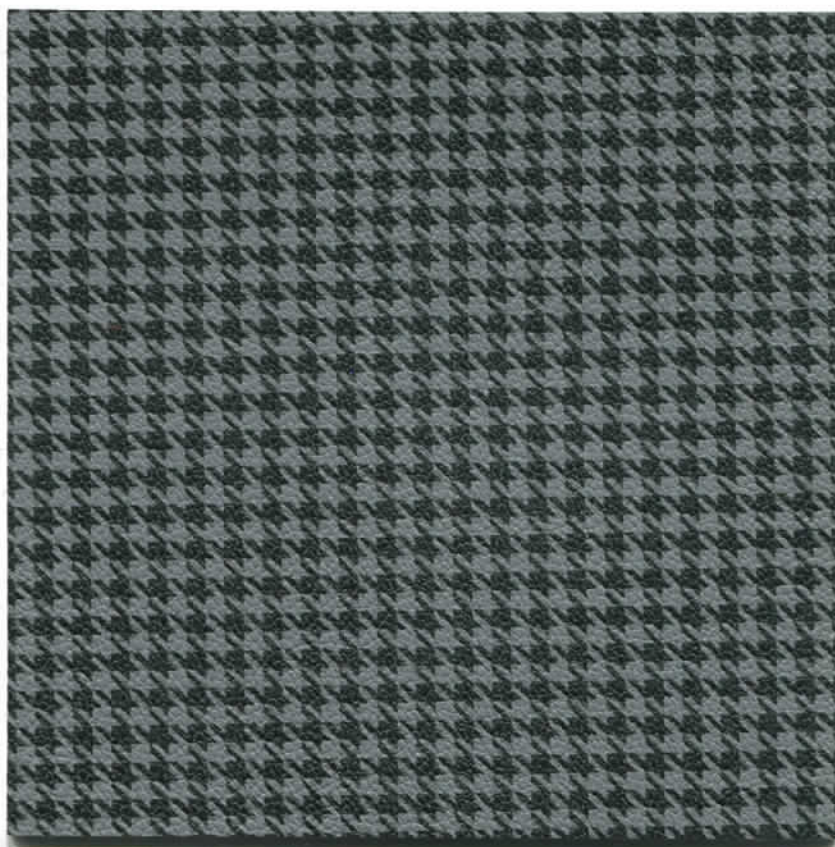


Aquarius Navy

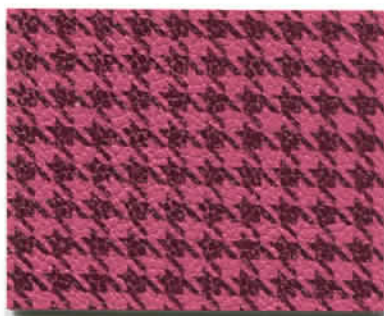
# Lunar *Canis* collection

**AGUA**  
UPHOLSTERY FABRICS

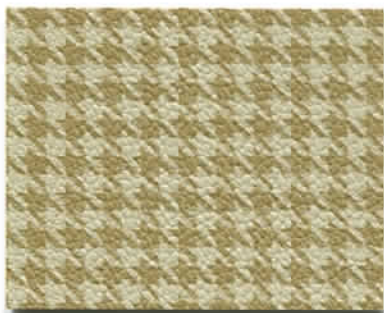
See Lunar card, Version 8.6,  
for co-ordinating Scorpio &  
Aquarius colours



Canis Grey



Canis Rose



Canis Cream



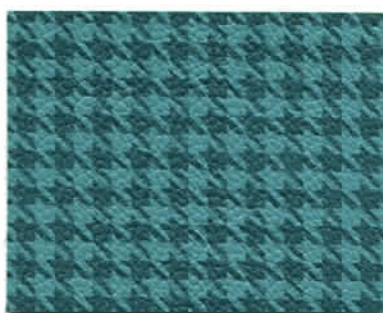
Canis Plum



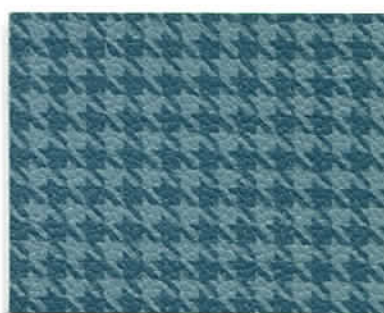
Canis Cornflower



Canis Apple



Canis Teal



Canis Sky



Anti-Microbial



Bleach  
Cleanable



Fire Retardant  
*Crib 5*



Stain Resistant  
Protech®



Waterproof



Martindale Abrasion  
*Severe Contract*



Phthalate  
Free



REACH  
Compliant

## Fabric Care

Remove all stains immediately before they set

Always try cleaning products on a hidden piece of fabric to test suitability

Use a vacuum cleaner or soft brush to remove dust and solid particles

Most stains can be removed using cold/warm water and a clean microfibre cloth

Use cold water when treating stains caused by bodily fluids

Stains from products containing oil and grease should be treated with a spirit based solution

Clothing dyes and biro are very difficult to remove from any fabric and may cause permanent stains

Do not use marker pens on the back of the fabric

If soap based cleaners are used, all soap residues must be rinsed from the fabric

For infection control situations this fabric can be cleaned with mild Hypochlorite solutions (10,000 ppm of available chlorine) e.g.: Tristel Fuse for Surfaces, Haz Tabs, Chlor-Clean. Continued use may cause discolouration and surface damage

Can be steam cleaned in situ

Do not machine wash or dry clean

Do not use: solvents, abrasives, chemical agents, waxes or polishes

Please refer to fabric care sheet on the Agua website for further details

## Other collections

*Juno collection*  
Chenille fabric for indoor upholstery

*Linetta collection*  
Linen look fabric for indoor upholstery

*Classic collection*  
Flat woven fabric for indoor upholstery

*Cashmir collection*  
Luxuriously soft fabric for indoor upholstery

*Libra collection*  
Soft upholstery fabric for indoor upholstery

*Strirata collection*  
Soft and flexible fabric for indoor upholstery

*Nova collection*  
Soft feel, microfibre fabric for indoor upholstery

*Evoke collection*  
Plush, textured fabric for indoor upholstery

*Sark collection*  
Velvety feel fabric for indoor upholstery

*Gemini collection*  
Striped and plain fabric with Aquaclean for indoor upholstery

*Nevis collection*  
Tartan, check and plain soft fabric for indoor upholstery

*Furnisoft PU collection*  
Soft, breathable faux leather for indoor upholstery

*Taurus collection*  
Designer faux leather fabric for indoor upholstery

*Paint Pot collection*  
Striking faux leather for indoor upholstery

*Derrytex collection*  
Dramatic dual textured fabric for indoor upholstery

*Mystique collection*  
Stunning faux leather fabric for indoor upholstery

*Vistas collection*  
Embossed faux leather for indoor upholstery

*Fusion collection*  
Diamond embossed faux leather for indoor upholstery

*Parody collection*  
Herringbone and Denim design faux leather for indoor upholstery

*Ocular collection*  
Wood effect faux leather for indoor upholstery

*The 7 collection*  
Fire retardant upholstery fabric to BS7176 Crib 7

*Aries collection*  
UV resistant faux leather for outdoor and indoor seating

*Aura UV collection*  
UV resistant upholstery fabric for outdoor seating

## Fabric Specifications

<i>Flame retardant</i>	BS7176 Crib 5, BS EN 1021-1:2006 0 & 1, IMO Resolution A652 (16), M2.
<i>Anti-bacterial/ Anti-fungal</i>	Will not support microbial or fungal growth including Salmonella, E Coli and MRSA
<i>Waterproof</i>	Hydrostatic Head BS3424 > 1 metre
<i>Martindale abrasion</i>	> 100,000
<i>Physical Properties</i>	BS 2543:2004 Contract Grade
<i>Composition</i>	Coating: 2% PU, 74% PVC, 12% Polyester, 12% Cotton Weight: 750gm ±5% Thickness: 1.20mm ±5%. 140 cm (55") wide
<i>Making up</i>	Can be stitched, tacked and glued. Cannot be heat welded Do not mark back of fabric with felt or ball-point pen

Lunar can be colour co-ordinated with other Agua collections to produce dual textured finishes. Bespoke designs can be printed subject to minimum quantity orders. Please note that all fabric offered is subject to minor tolerance in respect of shade and other slight variations.



Certificate No. FS 531220

*For further information and samples contact Agua Fabrics*

Agua Fabrics Ltd  
Hyde House, The Hyde  
London NW9 6LH

T +44 (0)20 8205 0050  
F +44 (0)20 8205 0660  
E [samples@aguafabrics.com](mailto:samples@aguafabrics.com)

[www.aguafabrics.com](http://www.aguafabrics.com)