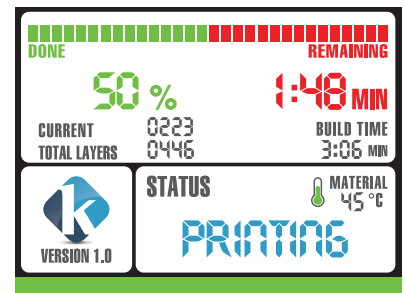


KEVVOX SP4300 SP6200

DESKTOP 3D-PRINTER FOR PROFESSIONALS



High Accuracy. Efficient. Easy Workflow.

Jewellery Designers & Casting Houses

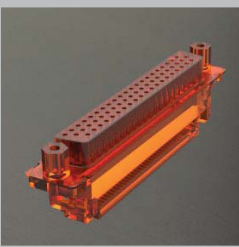
Dental Technicians & Dental Labs

Product & Industrial Designers

Mechanical & Electronic Engineers

Animators & Special FX Production

Toys Designers



Kevvox is fully dedicated to producing superior quality, fully integrated, stand-alone 3D printing systems that fit comfortably into any design or engineering environment. Kevvox 3D printers, which simplify the overall design-to-print process while adding value, feature industry-leading standards and quality, the likes of which have not been seen before.

Distributed by:

3D PRINTER SUPERSTORE

your one stop 3D printer shop.

p: +61 (0)404 226 197

www.3DPrinterSuperstore.com.au



Outstanding Breakthrough Features:

1. User friendly and ready to use out of the box
2. High-quality machine that produces high quality results
3. USB2.0 plug & play 3D printer that does not require a dedicated computer while printing
4. Fully integrated software
5. Software can manage multiple 3D printers simultaneously
6. Colour LCD display for easy progress monitoring
7. Integrated/automated controls of LED intensity, temperature and material viscosity
8. LED lamp last over 50,000 printing hours
9. Pause and resume function
10. Auto shut off function
11. Resin will not damage tray when left idle
12. Unique tray design shortens cleaning time

Technical Specifications:

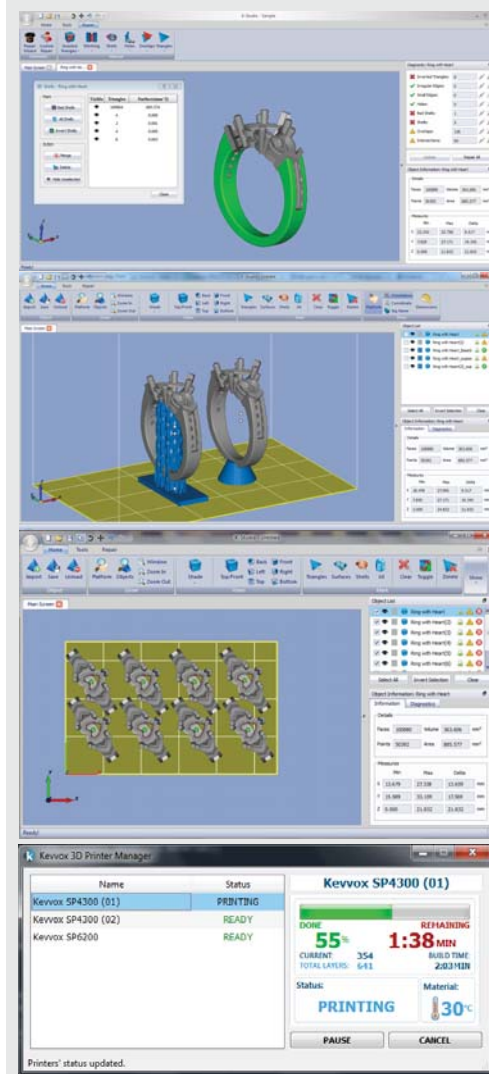
Model no.	Kevvox SP4300	Kevvox SP6200
Build Envelope (L x W x H) (Deviation: ± 2mm)	56x35x100mm (2.20" x 1.38" x 3.94")	80x50x100mm (3.15" x 1.97" x 3.94")
Native Pixel Size (x,y)	43 µm (0.0017")	62 µm (0.0024")
Layer Resolution (z)	10 µm, 25 µm, 50 µm, 100 µm	
Integrated Software	K-Studio	
Materials Available	ABS-Like (ABS-LC100), Wax-Like (WAX-LC200), High-Temperature Resistant (HTR-LC300) <i>(for the latest available material list, please visit our website)</i>	

Printer Dimensions:

Machine Dimensions (L x W x H)	375 x 425 x 470 mm (14.8" x 16.7" x 18.5")
Box Dimensions (L x W x H)	550 x 550 x 600 mm (19.7" x 19.7" x 23.6")
Nett Weight:	17.0 kg (37.5 lb)
Gross Weight:	22.0 kg (48.5 lb)
Electrical Requirements:	110V (10A) / 230V (4.5A)



Software Features:



Repairs models fast

Automatic creation of different support types (fully editable)

Outputs directly to Kevvox 3D-Printers

3D-Printer Manager handles all print-job related activities

Minimum System Requirement:

Windows XP, Windows 7 or Windows 8 (32 & 64 Bits)
Intel® Core™ 2 Duo 2.0 GHz, Core i3, AMD Athlon™ 64 X2 or better
1GB of VRAM (VideoMemory) 'Nvidia GeForce' or 'ATI/AMD Radeon'
2GB of RAM (SystemMemory), with 500 MB harddisk space.

About KEVVOX

Kevvox is a high technology company, with a wealth of experience in R&D, that is fully dedicated to providing integrated 3D printing solutions for professionals across many different industry sectors. Kevvox is a global company with offices in Asia and Europe together with business partners worldwide. The dedicated and multi-discipline team at Kevvox works relentlessly to reduce the time, effort and complexity traditionally associated with 3D printing for professional applications. At Kevvox we understand how critical quality is for users of 3D printers — in terms of system and results. We ensure the most rigorous QA testing procedures are built in to our own manufacturing processes and we are passionate about producing high-precision 3D printing hardware with integrated comprehensive software to ensure our customers produce the quality parts that they require.