

TOYOTA 4 RUNNER SR5

2014

Step Boards

Part Number: 00016-89004

Accessory Code: TRRB10



Conflicts

Limited

Kit Contents

Item #	Quantity Req'd.	Description
1	1	Running Board Driver (L)
2	1	Running Board Passenger (R)
3	1	Hardware Kit
4	1	Installation Instructions
5	6	brackets

Hardware Bag Contents

Item #	Quantity Req'd.	Description
1	12	8mm x 20mm Hex Bolt
2	12	8mm x 30mm Hex Bolts
4	12	8mm flange nut
5	12	8mm Flat Washers
6	12	8mm Lock Washers

Additional Items Required For Installation

Item #	Quantity Req'd.	Description
1	None	

Recommended Tools

Safety Tools	
Eye Protection	
Special Tools	
	Utility Knife
Installation Tools	
13mm Socket	Corresponding drive tool
Torque Wrench	14 nm or (10 Ft/lb)
Special Chemicals	

General Applicability

1.All applicable 2014 4Runner SR5 & Trail Team Edition
--

Recommended Sequence of Application

Item #	Accessory	
1	Drivers side	
2	Passenger side	
3		

Legend

	STOP: Damage to the vehicle may occur. Do not proceed until process has been complied with.
	OPERATOR SAFETY: Use caution to avoid risk of injury.
	CAUTION: A process that must be carefully observed in order to reduce the risk of damage to the accessory/vehicle and to ensure a quality installation.
	TOOLS & EQUIPMENT: Used in Figures calls out the specific tools and equipment recommended for this process.
	REVISION MARK: This mark highlights a change in installation with respect to previous issue.
	SAFETY TORQUE: This mark indicates that torque is related to safety.

SPECIAL NOTE: Installation Sequences

After TMS and Safety mandated preparatory steps have been taken, the installation sequence is the suggested method for completing the accessory installation. In some instances the suggested sequence is written for one associate to install and in others the sequence is given as part of a team accessory installation. Unless otherwise stated in the document, the associates may perform the installation steps in any order to make the installation as efficient as possible while maintaining consistent quality.

A. Pre-installation Preparation

NOTE: Be sure to remove the protective wrapping from the Step Boards and dispose properly, prior to installation. (Fig 1)

1. Verify and ensure all Kit and Hardware Contents are present.

NOTE: Due to the generic nature of the hardware kit some "extra" hardware may be present. Please save this hardware for replacement of damaged or lost hardware on future installations.



2. Wear eye protection.



3. Ensure all application areas are free from any dirt and debris that may damage the surface of the product or vehicle.



4. Separate and prepare the Bracket to Vehicle Hardware, 8mm x 30mm hex bolts, flat washers, and lock washers.

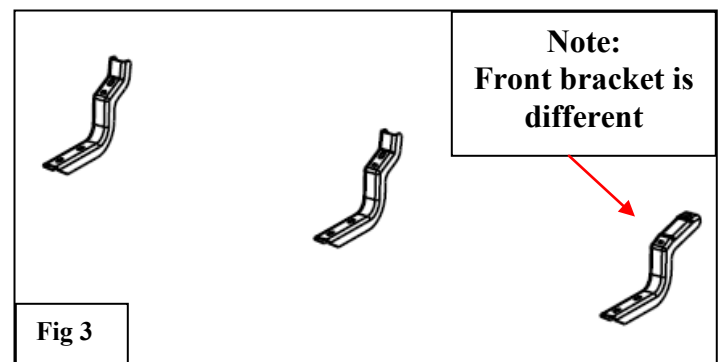
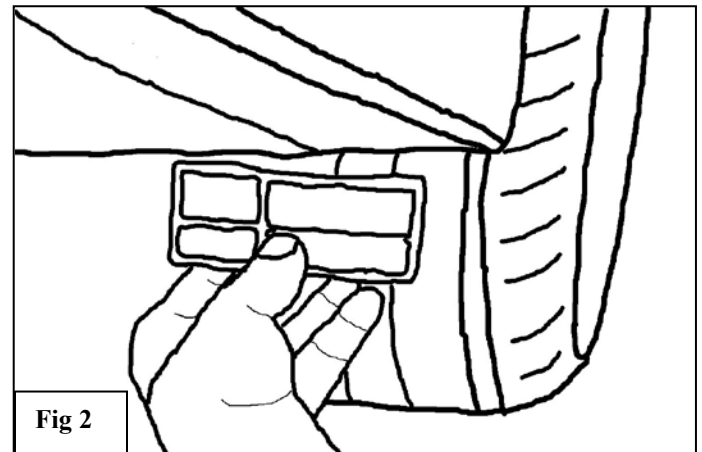
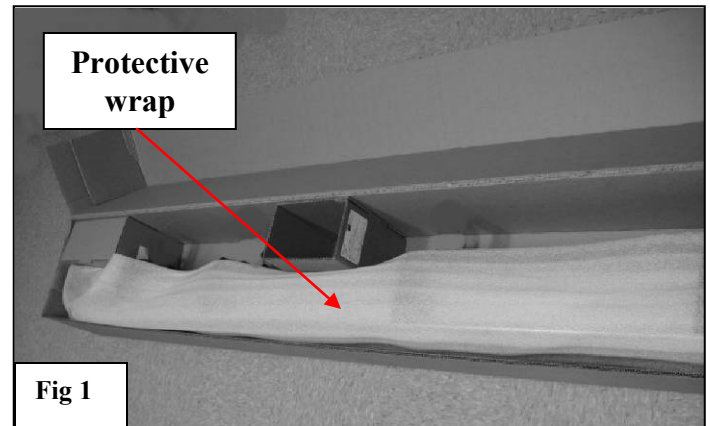
B. Running Board Installation

1. Using a 12mm socket, remove & discard OEM Hex bolts from all bracket positions underneath vehicle and plastic wind deflector in front of rear tire. (New bolts are provided) (Fig 2)



2. **NOTE:** For each side of the vehicle, the different bracket goes toward the front. (Fig 3)

NOTE: Front Driver Side and Passenger Side Brackets are identical (ambidextrous). All referred instruction procedures represent instructions on one side of the vehicle.



3. Position the Brackets onto the sidewall & align the Bracket holes to the factory holes (Fig 4).
4. Secure the Brackets using the 8mm x 30mm hex bolts, Flat washer and Lock washers.

C. Repeat Steps B.1-4 for the opposite side of the vehicle.



1. **IMPORTANT:** Position the Board on the brackets. Install (6) 8mm x 20mm hex bolts, three per track align with brackets Fig 5. Install 8mm serrated flange nuts.
2. **NOTE:** Leave the Hardware loose at this time.

D. Torque sequence (Passenger/Driver side).



IMPORTANT: Prior to final Torque sequence, ensure that the bracket is positioned flush on the vehicle sidewall



1. **IMPORTANT:** Gap between rear end cap and rear bracket must be 9.5mm (3/8"). Fig 6.



2. Torque all twelve 8mm Hex Bolts (Bracket to Vehicle) to **14nm (10ft/lbs)**.



3. Torque all twelve 8mm Flange nuts (Bracket to Running Board) to **14nm (10ft/lb)**

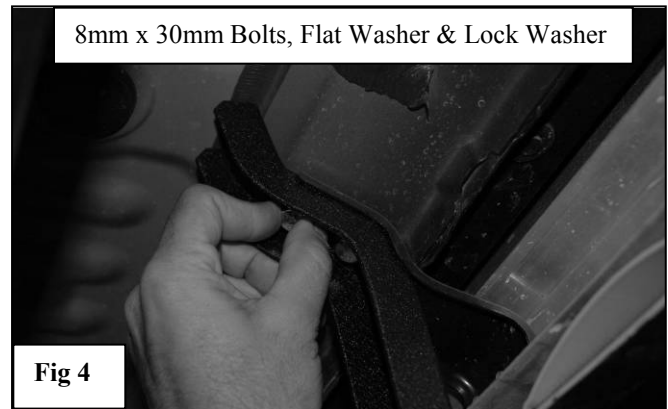


Fig 4

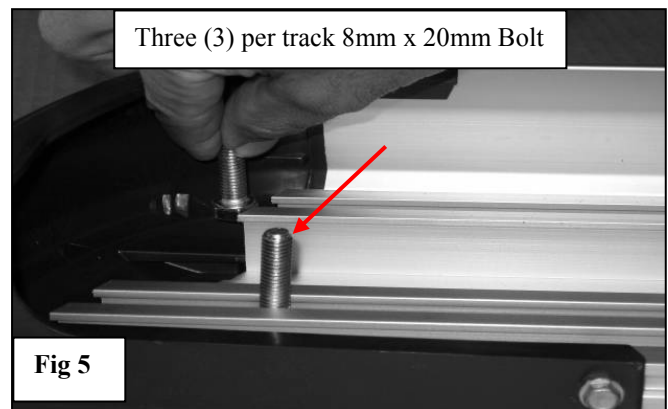


Fig 5

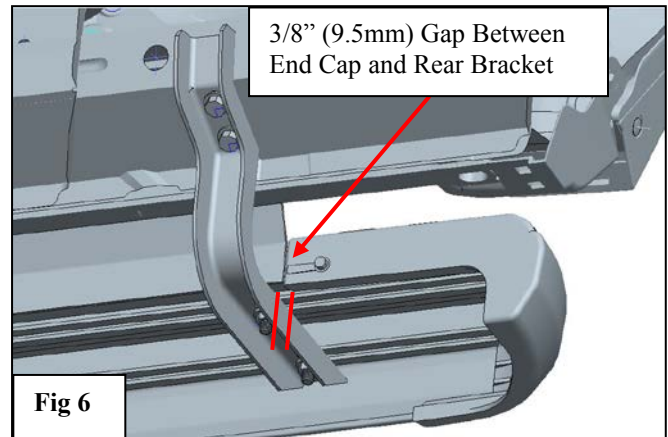


Fig 6

Accessory Function Checks

☐ Board alignment & tighten properly

☐ All bolts are tightened

☐ No abnormal noise when weight is applied

☐ Torque bolts to target:

8mm Hex Bolts (Bracket to Vehicle) to
14nm (10ft/lbs). +/- 25%
12.5 ~7.5 ft . lbs

8mm Flange nuts (Bracket to Running)
Verify torque wrench is being used during
installation.

Vehicle Function Checks

☐ View alignment of Running Board

☐ Verify that there is no interference with
front Fender Flair & Mud Flap

Note: Range is provided by QA