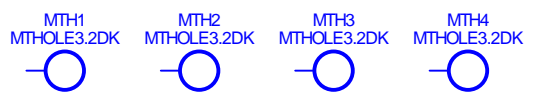



PCB CCTV Reference Design BoardPMT CCTV Reference Design Board

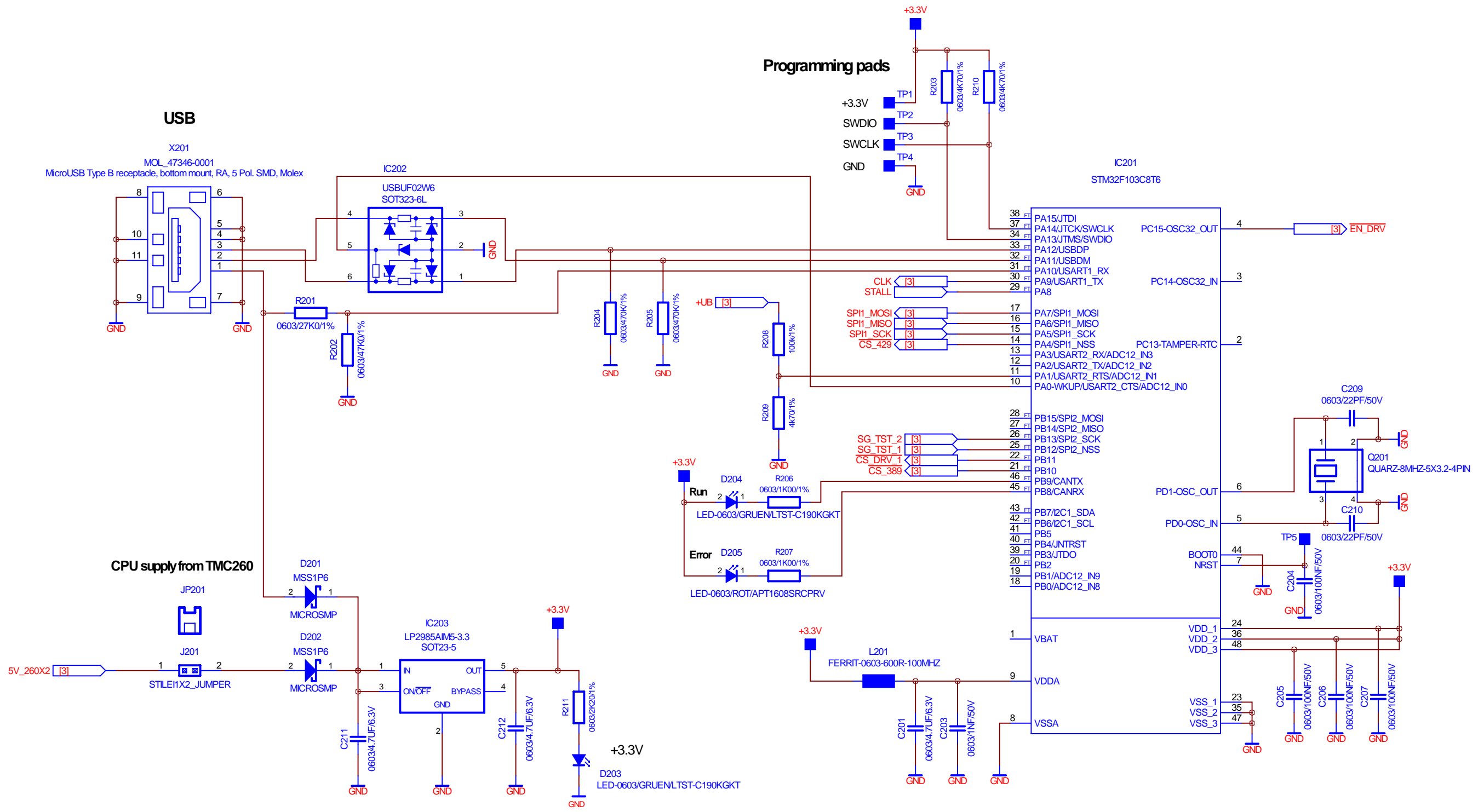



Revision-History	
Datum	Änderungen
02.02.2011	Start design, based on TCM-1041
14.02.2011	Ver 00A
15.02.2011	Ver 00B
16.02.2011	Ver 00C J301, J301 changed to push buttons S301, S302 Jumper header J330, 2x5pin changed to 2x6 pins Added flat cable header J331, 2x5 pin Power voltage TMC_VIO connected to IC302, IC303 D305, SMBJ28A changed to SMBJ36A C305, C310, C312, C317 changed from 10uF/35V to 4.7uF/50V
17.02.2011	Ver 00D Signals POSCMP and INT_SDO_C connected to J331 D306, R331 added All LEDs changed from 0805 size to 0603 C304, C311 changed from 47uF to 100uF, low ESR type D307 added, LED for 5.0V power supply J306, J307, J308 SPI signals reconnected Attribute updates
18.02.2011	Ver 00E Added SG_TST test pins J332, J333 Address changed in title block
22.02.2011	Ver 00F Added IC305, C322, C323, J317, J318, J334 connector types changed
02.03.2011	Ver 00G
03.03.2011	Ver 00J Added ground testpoint J336 SDI, SDO, SCK signals reconnected behind termination resistors J331 type changed to boxed header
04.03.2011	Ver 01
22.03.2011	Ver 02 Motor drivers re-ordered in SPI-chain SG_TEST pins connected to processor pins

Für diese Zeichnung behalten wir uns alle Rechte vor.				Masstab		
02	Release	23.03.11	ML	Datum	Name	 <p>TRINAMIC® Motion Control GmbH & Co KG Waterloohain 5, 22769 Hamburg / Germany Tel.: ++49 - 40 / 451 48 06 - 0 Fax: ++49 - 40 / 51 48 06 - 60</p>
01	Release	04.03.11	ML	Bearb.		
00E	See history	18.02.11	ML	Gepr.		
00D	See history	17.02.11	ML	Norm		
00C	See history	16.02.11	ML			
00B	See history	15.02.11	ML			
00A	See history	14.02.11	ML			
00	Start design	02.02.11	ML			
Ausg.	Änderung	Datum	Name			
Konstruktionsänderungen vorbehalten						

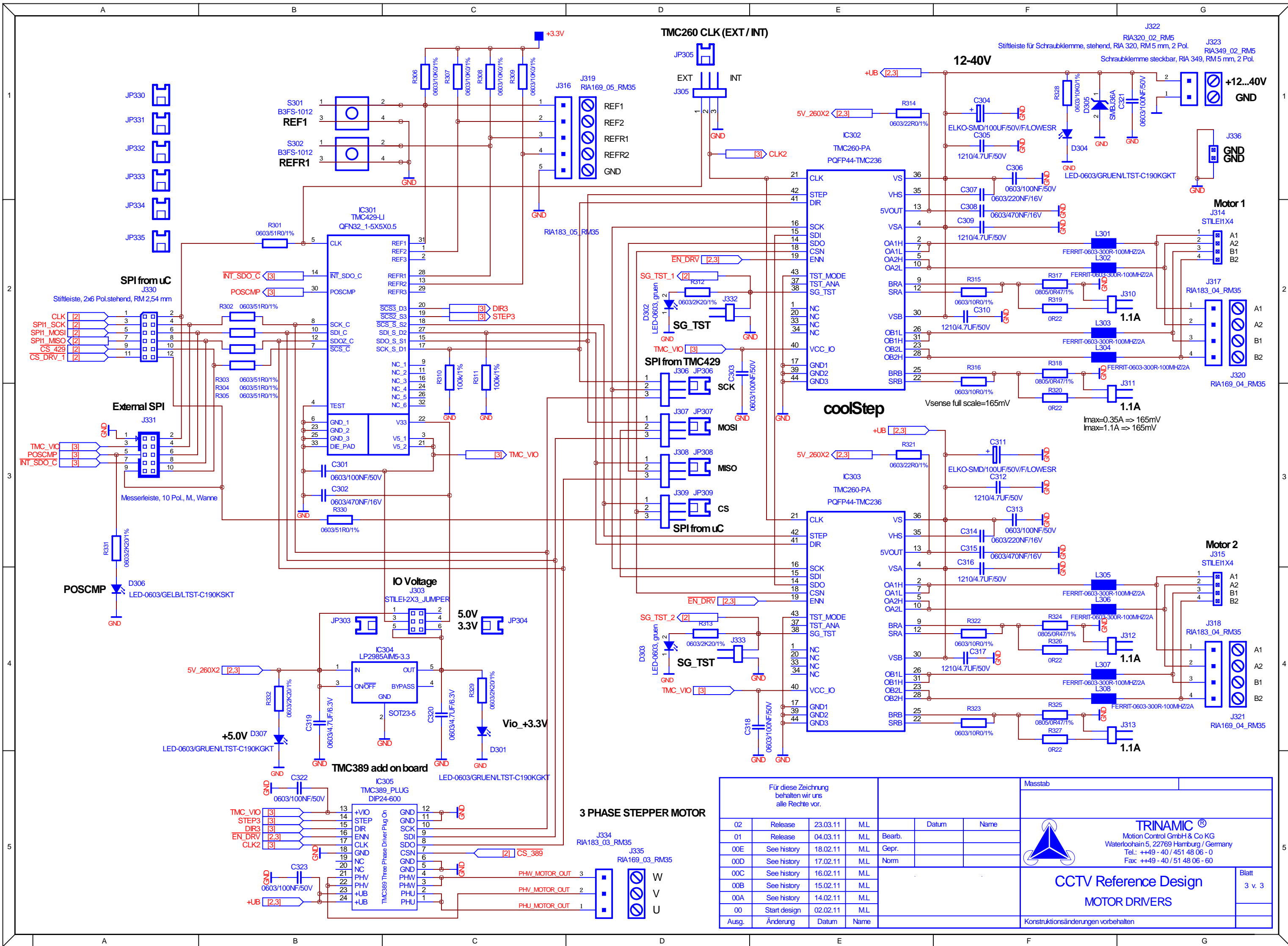
URHEBERSCHUTZ NACH DIN 34
 THE COPYRIGHT OF THIS DOCUMENT IS THE PROPERTY OF TRINAMIC GMBH.
 THE DOCUMENT MAY NOT BE COPIED, REPRODUCED OR EXHIBITED TO A THIRD
 PARTY WITHOUT WRITTEN PERMISSION.

COPYRIGHT BY/DIN34.
 THE COPYRIGHT OF THIS DOCUMENT IS THE PROPERTY OF TRINAMIC GMBH.
 THE DOCUMENT MAY NOT BE COPIED, REPRODUCED OR EXHIBITED TO A THIRD
 PARTY WITHOUT WRITTEN PERMISSION.



Für diese Zeichnung behalten wir uns alle Rechte vor.				Masstab		
02	Release	23.03.11	ML	Datum	Name	 <p>TRINAMIC® Motion Control GmbH & Co KG Waterloochain 5, 22769 Hamburg / Germany Tel.: ++49 - 40 / 451 48 06 - 0 Fax: ++49 - 40 / 51 48 06 - 60</p>
01	Release	04.03.11	ML	Bearb.		
00E	See history	18.02.11	ML	Gepr.		
00D	See history	17.02.11	ML	Norm		
00C	See history	16.02.11	ML			
00B	See history	15.02.11	ML			
00A	See history	14.02.11	ML			
00	Start design	02.02.11	ML			
Ausg.	Änderung	Datum	Name			
Konstruktionsänderungen vorbehalten						
CCTV Reference Design CONTROLLER						Blatt 2 v. 3


COPYRIGHT BY/DIN34.
 THE COPYRIGHT OF THIS DOCUMENT IS THE PROPERTY OF TRINAMIC GMBH.
 THE DOCUMENT MAY NOT BE COPIED, REPRODUCED OR EXHIBITED TO A THIRD
 PARTY WITHOUT WRITTEN PERMISSION.



Für diese Zeichnung behalten wir uns alle Rechte vor.

02	Release	23.03.11	ML		Datum	Name
01	Release	04.03.11	ML	Bearb.		
00E	See history	18.02.11	ML	Gepr.		
00D	See history	17.02.11	ML	Norm		
00C	See history	16.02.11	ML			
00B	See history	15.02.11	ML			
00A	See history	14.02.11	ML			
00	Start design	02.02.11	ML			
Ausg.	Änderung	Datum	Name			

Masstab



TRINAMIC
 Motion Control GmbH & Co KG
 Waterloohain 5, 22769 Hamburg / Germany
 Tel.: ++49 - 40 / 451 48 06 - 0
 Fax: ++49 - 40 / 51 48 06 - 60

CCTV Reference Design
MOTOR DRIVERS

Blatt
3 v. 3

Konstruktionsänderungen vorbehalten

