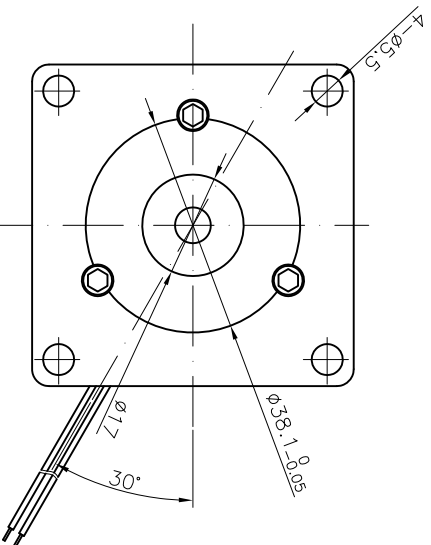
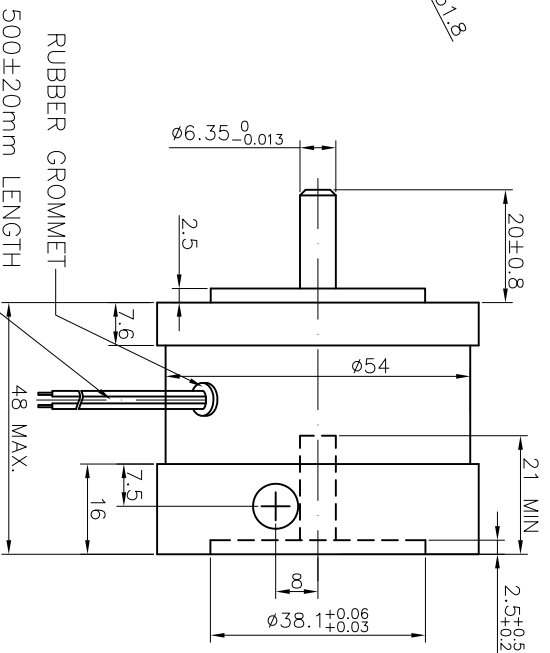
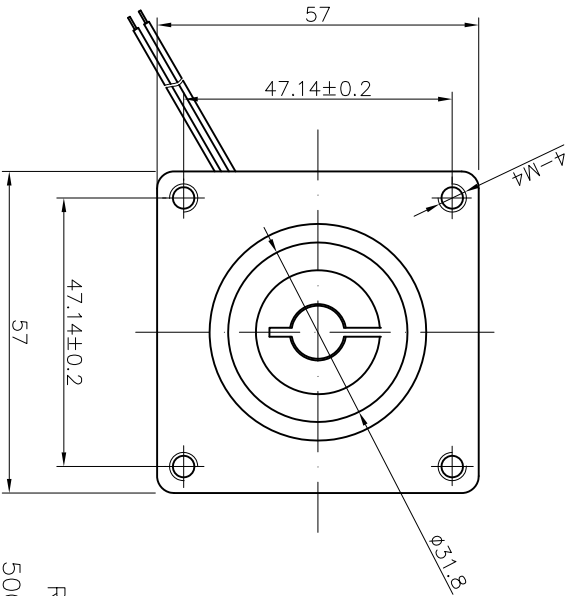
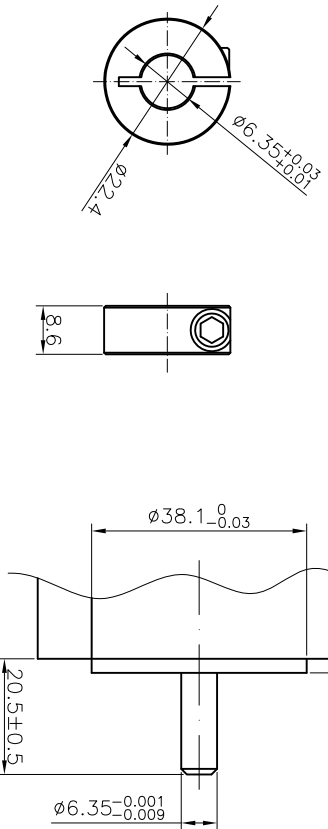


REV	DESCRIPTION	DATE	APPROVE
P1	PRELIMINARY	11/03/09	QYJ
P2	PRELIMINARY	11/05/17	QYJ
P3	PRELIMINARY	14/03/27	SQ



RUBBER GROMMET  
500±20mm LENGTH  
COLOUR: WHITE

MOTOR INTERFACE:



- NOTE:
- VOLTAGE: 24VDC
  - STATIC TORQUE: 0.5Nm Min.
  - RATED CURRENT: 0.31A
  - POWER: 7.3W
  - RESISTANCE: 78 Ohms
  - START VOLTAGE: 15VDCMAX.
  - HI-POT: 500VAC/1S, 2mA
  - POWER OFF BRAKE
  - OFFER AN FIXED SCREW M3X10 WITH THE BRAKE

NOTE: THIS DRAWING HAS BEEN CREATED BY AUTOCAD. MANUAL REVISIONS ARE NOT ALLOWED.

MATERIAL	TOLERANCE	UNLESS OTHERWISE SPECIFIED
ISO 2768-1 MEDIUM		

DRAWN	CHECKED	APPROVED - DATE	FILENAME	DATE	SCALE
ZQY				xx/xx/xx	N/A

BRAKE

**Exmex**

MPC023-24-002

SHEET  
1/1