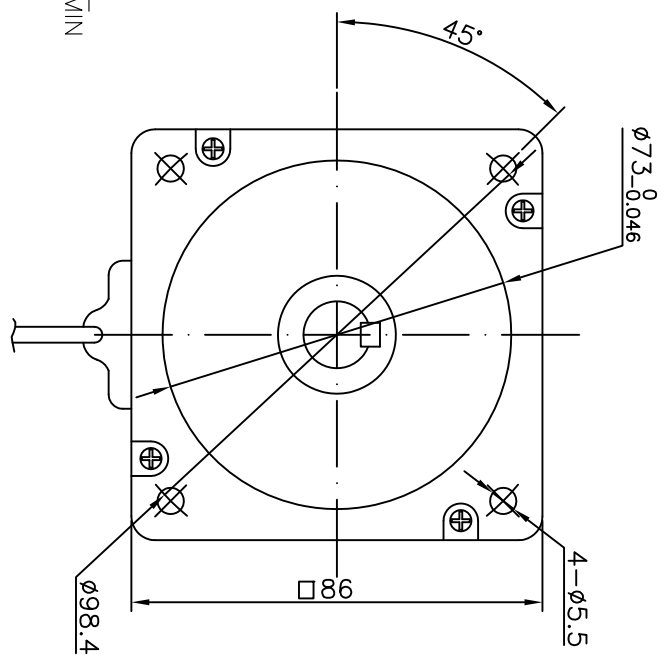
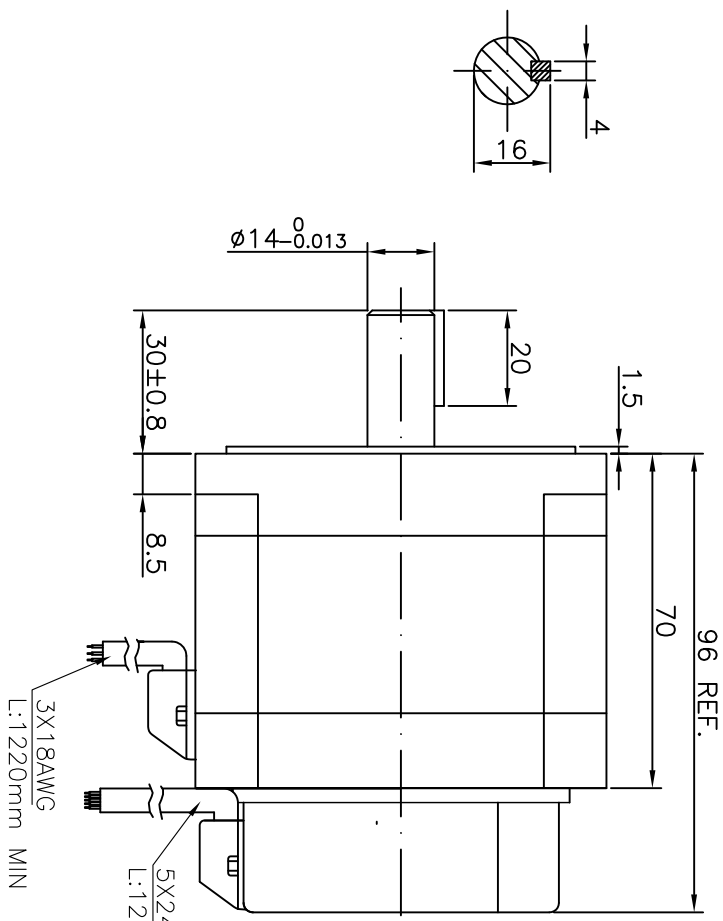


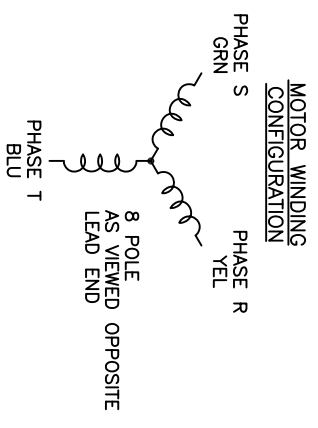
- NOTES:
 1. HI-POT: 1800VAC/1S, 2mA
 2. SUPPLY THE KEY WITH MOTOR TAPED ON THE SHAFT



Motor Specification	
Resistance	8.3 Ohm±10%
Inductance	26 mH±20%
Voltage	310VDC
Kt	0.83N.m/A
Ke	44V/Krpm±1V
Load Current	0.935A
Unload Speed	5000rpm
Torque	0.7Nm
Load Speed	3000rpm
Power	200W
Weight	1.85Kg
No. of poles	8

TIMING DIAGRAM	
ELECTRICAL DEGREES	60° 120° 180° 240° 300° 360°
HALL A	
HALL B	
HALL C	
PHASE R-S-T	
PHASE S-T	
PHASE T-R	

ROTATION: CLOCKWISE AS VIEWED FROM SHAFT END.



CONNECTION CHART	
SENSOR	MOTOR
COLOR	FUNCTION
YELLOW	PHASE R
GREEN	PHASE S
BLUE	PHASE T
YELLOW	HALL A
GREEN	HALL B
BLUE	HALL C
RED	4.5 - 24 VDC
BLACK	GROUND

NOTE: THIS DRAWING HAS BEEN CREATED BY AUTOCAD. MANUAL REVISIONS ARE NOT ALLOWED.

MATERIAL

TOLERANCE UNLESS OTHERWISE SPECIFIED
 ISO 2768-1 MEDIUM

DRAWN xxx	CHECKED	APPROVED - DATE	FILENAME	DATE xx/xx/xx	SCALE N/A
--------------	---------	-----------------	----------	------------------	--------------



DC SERVER MOTOR
 ME086GAS109
 SHEET 1/1

THIS DRAWING AND THE INFORMATION DISCLOSED HEREIN ARE PROPRIETARY DATA OF EXMEX ELECTRIC CO. LTD., AND IS TO BE IMMEDIATELY RETURNED UPON REQUEST. REPRODUCTION OF THIS DRAWING OR THE INFORMATION CONTAINED HEREIN IS PROHIBITED WITHOUT THE EXPRESSED WRITTEN APPROVAL OF EXMEX.

REV	DESCRIPTION	DATE	APPROVE
P1	PRELIMINARY	14/03/14	YJW