

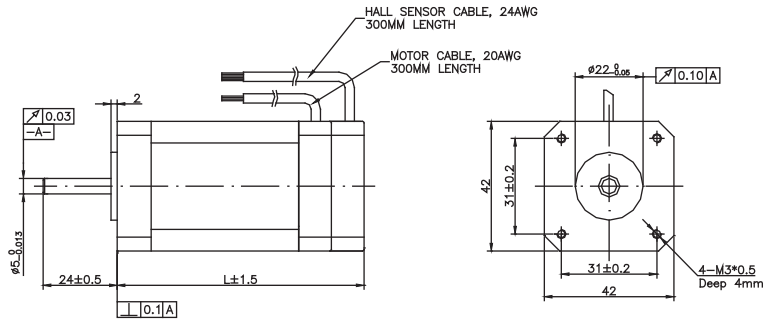
ME042AS BLDC Series Motor



General information

- 8 poles with three phase
- NEMA 17 flange winding
- Insulation class B , higher insulation on request
- Sintered Neo Magnet power range:31.4 ~94.2W

Mechanical



Specifications

Specification	ME042AS100	ME042AS200	ME042AS300
Voltage (VDC)	24	24	24
Resistance (OHMS)	2.40	0.85	0.61
Inductance (mH)	1.7	0.63	0.38
Nominal Speed (RPM)	3000	3000	3000
Nominal Torque (Nm)	0.1	0.2	0.3
Nominal Current (A)	2.5	4.4	5.2
Nominal Power (W)	31.4	62.7	94.2
Peak Torque (Nm)	0.3	0.6	0.9
Peak Current (A)	7.5	13.2	15.6
Ke (V/KRPM)	5.6	5.5	5.1
Rotor Inertia (Kgcm ²)	0.029	0.059	0.089
Weight (kg)	0.3	0.4	0.6
L (mm)	50	68	88

Characteristic diagram

