

VW Shift Paddle Kit

Installation Instructions



Parts Included:

- (1) Left and right shift paddle
- (1) Small pick tool
- (1) Hex key
- (1) T20 Torx key
- (1) Loctite capsule

Tools Needed:

- Medium flat-head screwdriver (6 inch length or less with broad tip)
- Adjustable wrench
- Mechanics mirror
- Masking tape

We highly recommend watching our installation videos. They can be found on our website at doubleapex.co/install

Step 1:

Disconnect the negative battery cable. Move the cable to a secure position next to the battery box and cover the battery terminal with a heavy rag.



Step 2:

Remove the fuse for the air bag controller. See appendix A for the fuse location on your vehicle. Wait two minutes before proceeding to the next step to let any residual electrical charge dissipate.



WARNING: PROCEED WITH CAUTION. AIRBAG REMOVAL CAN BE DANGEROUS. TO PREVENT ACCIDENTAL DEPLOYMENT ENSURE THE BATTERY HAS BEEN DISCONNECTED. AVOID POSITIONING YOURSELF DIRECTLY IN FRONT OF THE AIRBAG. HANDLE THE AIRBAG WITH CARE.

Step 3:

Release the steering column adjuster and extend the column out and downward as far as possible. Unlock the steering wheel by turning the key only slightly. Do not turn it to the power on position. Turn the wheel 90 degrees from center as shown.



Step 4:

Place masking tape over the top of the steering column to prevent scratches. Using a flat head screw driver carefully pry the airbag retaining clip downwards while pulling out on the airbag (Photo A). Depending on the geometry of the screwdriver it may be easier to twist the driver to disengage the clip. A mechanics mirror is recommended to help line up the driver with the clip. The airbag will only come out slightly at first (Photo B). Rotate the wheel 180 degrees and repeat for the other side.



Step 5:

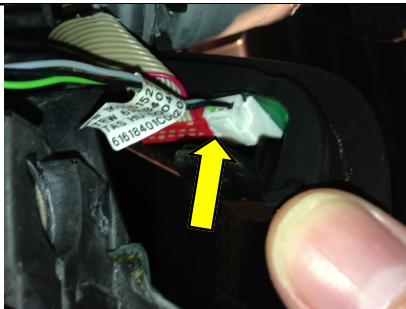
Pull the air bag out only enough to expose the Torx screw on the left side.

You do not need to disconnect the airbag. Make sure the airbag is stable and remove the Torx screw securing the steering wheel trim piece. Note how the wires exit from the top of the trim piece.



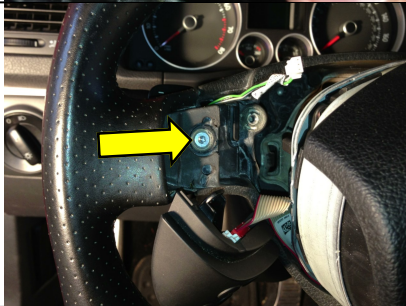
Step 6:

Remove the trim piece and disconnect the shift paddle wire by pushing in the release tab.



Step 7:

Remove the Torx screw that secures the shift paddle. Remove the shift paddle, carefully feeding the wire through the opening in the steering wheel. Repeat steps 5 through 7 on the right paddle.



Step 8:

Using the included hex key lightly push the hinge pin in the direction of the paddle +/- marking, so the pin puts slight pressure on the pin retaining clip (at arrow). Use the included pick tool to carefully release the clip from the pin groove.



Step 9:

Push the hinge pin out with the hex key until it can be removed by hand.



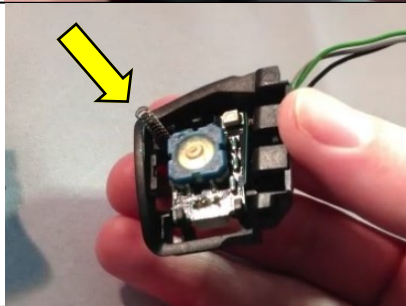
Step 10:

Separate the two halves at the hinge side first. Carefully pry apart the snap fit on the opposite side so the spring is released slowly.



Step 11:

Place the return spring into its recess on the paddle base.



Step 12 (photos on next page):

Insert the other end of the spring into the recess on the new paddle (Photo A). The snap lip on the paddle needs to slide under the lip in the base (arrows in Photo B). Position the paddle as shown in Photo C and slide into position as shown in Photo D. **The spring has been removed in the photos for illustration clarity only.** Ensure the spring does not move from its recesses.

Line up the hinge pin holes; the paddle snap edge should be secure beneath the base edge. Insert the hinge pin (Photo E). If necessary use the Torx key to push in the pin completely. The fit should be snug. Make sure the pin does not stick out past either end of the hinge and the retaining clip engages the pin groove. Make sure the actuation of the paddle is smooth with no binding. Repeat steps 8 to 12 for the second paddle.

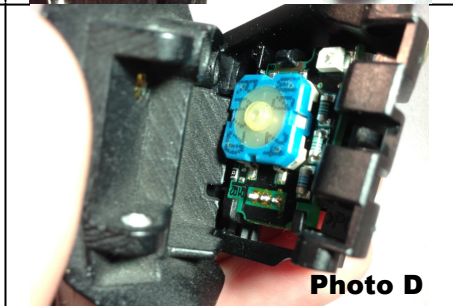
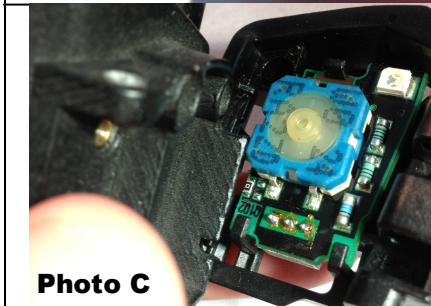
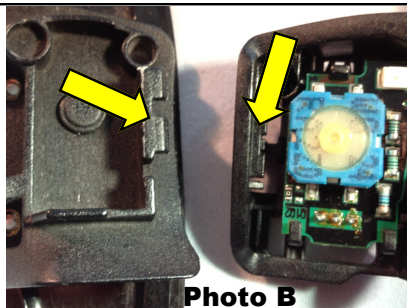
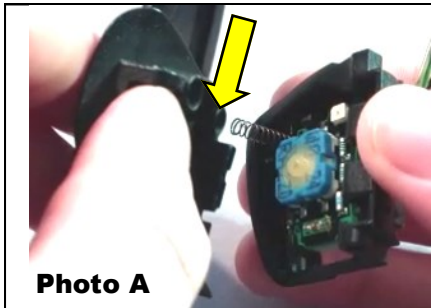


Photo E



Step 13:

Install the left paddle assembly and put a drop of Loctite on the Torx screw. Thread in fully then apply a 1/4 turn. Do not over tighten. Check for smooth paddle actuation. If it binds the screw is too tight.



Step 14:

Reconnect the paddle wire to the trim piece and reinstall, making sure the wire is routed as it was when first removed. Repeat steps 13 and 14 on the other side.



Step 15:

Align the airbag and with firm pressure on both sides push to engage the retaining latches. Reinstall the airbag fuse and reconnect your battery. Your traction control and steering warning lights may illuminate when the car is first started. These will reset after a short drive.



Thank You!

Thank you for choosing the Double Apex Shift Paddle Kit. We believe in continuous improvement so until our products install themselves our instructions and process could probably be better. Any feedback is appreciated. If you have comments or questions please don't hesitate to contact us at info@doubleapex.co or visit us at doubleapex.co.

Product Registration

We encourage you to register your product. This allows us to contact you with any important notices or updates and makes any warranty or technical support requests easier to process. You can scan the QR label on the back of the packaging or go to [**doubleapex.co/registration**](http://doubleapex.co/registration) and enter the serial numbers found on the QR label.

Appendix A— Airbag Control Module Fuse Locations*

Vehicle	Fuse Location	Fuse #
MK5 Golf / GTI / Eos	Inside driver door	3
MK5 Jetta (to April 2005)	Inside driver door	30
MK5 Jetta (from May 2005)	Inside driver door	3
MK6 Golf / GTI	Inside driver door	3
MK6 Jetta	Inside driver door	9
New Touareg	Inside passenger door	14
Tiguan	Below steering column	9
B6 Passat (to April 2008)	Inside passenger door	9
B6 Passat (from May 2008)	Inside driver door	9

*Double Apex is not responsible for errors, accuracy is not guaranteed. Locations may not be correct for all model variations. Refer to your owners guide or factory repair manual for more information.

Limited Warranty

Double Apex LLC warrants this product, Shift Paddle Kit, to be free from defects in materials and workmanship for one year from date of purchase to the original retail Purchaser.

Double Apex LLC reserves the right to repair or replace the defective product at their discretion, without charge. This is the only remedy the purchaser has for any loss or damage due to any defect in the product. This warranty does not cover labor, lost profits, down time or loss of use, shipping costs, damage to the vehicle or other incidental, indirect or consequential damages.

This warranty is void if the product is misused, abused or installed incorrectly.

The Purchaser is responsible for ensuring that the product is installed correctly and should immediately stop use of the product if an improper or unsafe condition is observed.

Please contact Double Apex LLC to make a warranty claim before returning the product.