



---

# Instruction Manual

aBlue



2013 Audicus Inc, All Rights Reserved

## Thank you for choosing Audicus!

We are very proud of our devices and hope you enjoy your high-tech hearing aid.

In order to benefit the most from your Audicus hearing aid, please read these instructions carefully. This manual contains important information about the **aBlue**.

If you have any questions, feel free to contact us at **888 979 6918** or **contact@audicus.com**



## Content

<b>Introduction</b>	<b>5</b>	<b>Troubleshooting</b>	<b>17</b>
<b>Quick Start</b>	<b>6</b>	<b>Technical Information</b>	<b>19</b>
<b>Batteries</b>	<b>7</b>	<b>Returns and Warranty</b>	<b>20</b>
<b>On/Off</b>	<b>9</b>	<b>Serial Information</b>	<b>21</b>
<b>Placement in the Ear</b>	<b>10</b>	<b>Medical Information</b>	<b>22</b>
<b>Memory Programs</b>	<b>12</b>	<b>Warnings and Side Effects</b>	<b>23</b>
<b>Cleaning</b>	<b>13</b>	<b>Information for Prospective Users</b>	<b>24</b>
<b>Maintenance and Use</b>	<b>14</b>	<b>Contact</b>	<b>25</b>
<b>Accessories (Optional)</b>	<b>16</b>		

## Introduction

The aBlue is a state of the art **digital** hearing aid. Compared to older analog devices, it has:

- More granular sound quality
- Better feedback and noise reduction
- Improved speech recognition
- Optional Bluetooth technology
- Sleek, award-winning design
- Comfortable, adjustable fit

The aBlue is customized with multiple memory programs. In addition, its auto-adapt feature allows the aid to automatically acclimate to your hearing environment. With the optional remote control, you can have additional volume options.



## Quick Start

These basic steps will get more experienced users started.

We recommend you to read the rest of the manual to fully familiarize yourself with the device.

1. Open the battery compartment
2. Insert a **size 312** battery and fully close the compartment
3. Place the hearing aid behind the ear
4. Insert the ear-dome into the ear canal
5. Press the program button for the appropriate listening setting
6. To turn “OFF” the device, open the battery door OR hold the program button for four seconds
7. Do not expose the device to heat or humid environments; keep it away from children and pets.

**To benefit the most from your new hearing aids, wear them regularly and allow yourself a few weeks to fully adjust to them.**

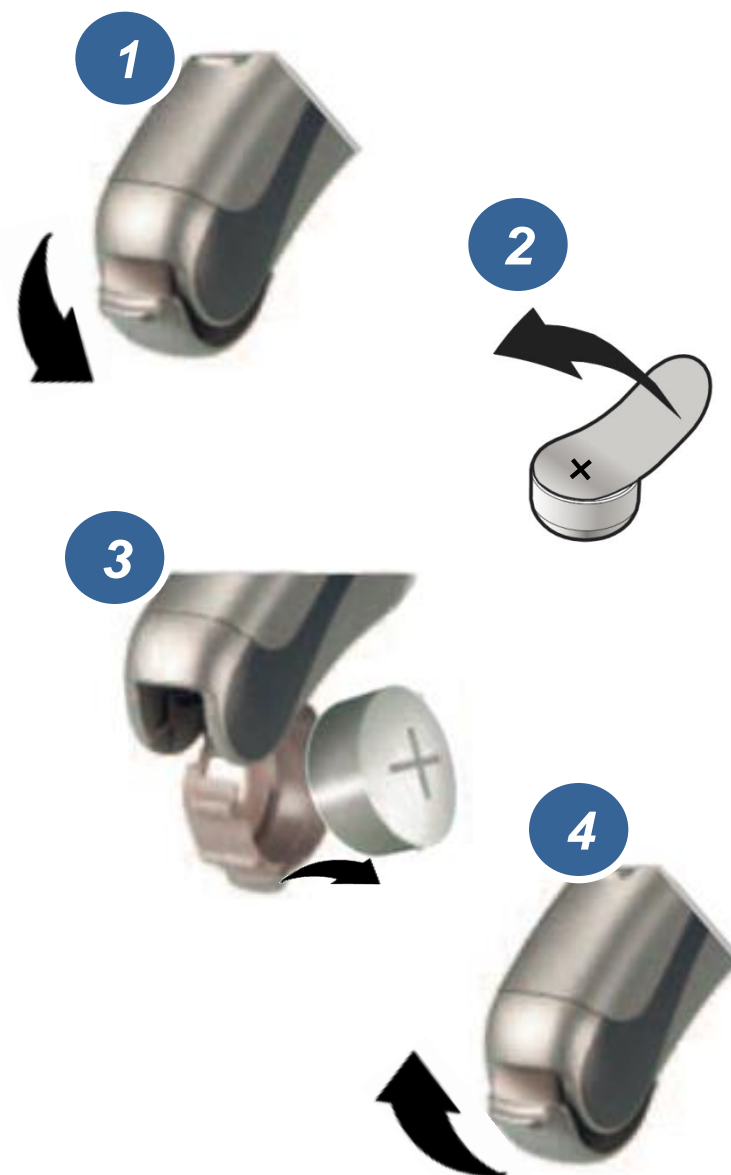
## Batteries

### Battery Compartment

The battery compartment is at the back of the device, as indicated. Gently open the tab on the battery door. When opening and closing the battery door you should never have to exert force.

### Inserting a Battery

1. Open the battery compartment
2. The aBlue uses **size 312** batteries. Take off the sticker from a new battery.
3. Place battery into battery compartment, with the “+” sign facing up.
4. Close the battery compartment completely. Your device should now be switched **ON**.



## Batteries

### Battery Use

When you are not using your device (e.g. when you go to sleep) we recommend opening the battery compartment completely to preserve battery power. You may open the battery door half way to save battery life. Please remove batteries when the hearing systems are not in use for a prolonged period of time.

### Low Battery Warning

When your battery runs low, the device will emit multiple continuous beeps. Batteries tend to last 200 hours.

### Battery Safety

- Batteries contain harmful substances that pollute the environment:
  - Do not dispose of batteries in household trash
  - Dispose of batteries according to federal and local regulations
- Never attempt to recharge batteries that are not designed for that purpose
- Keep batteries away from sources of high temperature
- Keep batteries away from children and pets
- Do not carry batteries loose in your pocket or purse
- Do not place batteries in your mouth. If swallowed, consult a physician immediately



## On/Off

### Switching your Device On / Off

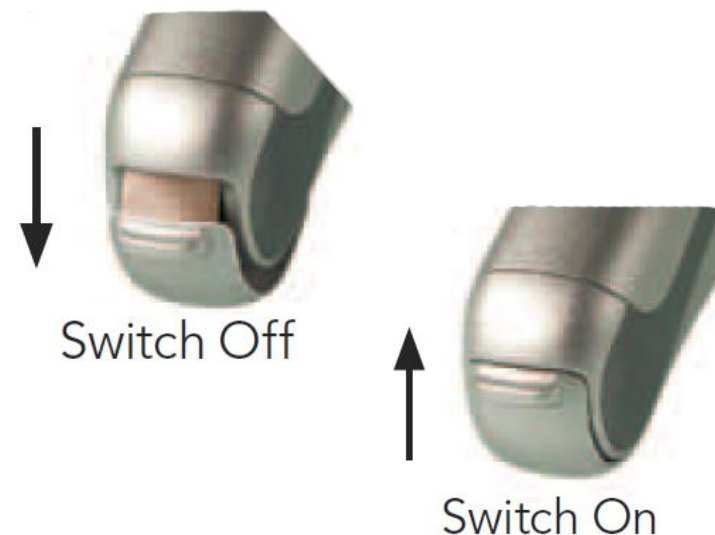
The aBlue is switched “On” or “Off” through its battery compartment. When the battery door is closed, the device is switched “On”. If you want to turn the device “Off”, gently open the battery door until it is fully open.

When the device is not in use, we recommend opening the battery compartment in order to preserve battery power.

### Standby Mode

The standby mode is another way of preserving battery power.

Just press the program button for four seconds until the device goes into standby. To re-activate the device, simply press the program button for four seconds.

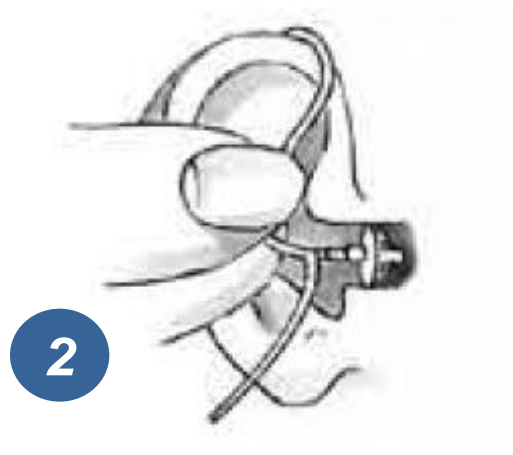


## Placement in the Ear

### The aBlue can be inserted in 3 easy steps:

1. Place the device over the top of your ear, so that the hard casing is behind your ear and the tubing is in front
2. Push the dome into your ear until it sits comfortably and the tube lies flat against the side of your head. The dome should be just inside the ear canal. You should not see it if placed correctly
3. Place the retention guard of the sound tube into the bowl of your outer ear

To remove your hearing aid, hold the tube and pull it outward



## Placement in the Ear

### Considerations

Handle your hearing aid with care when placing it in your ear. If it does not feel natural, do not attempt to alter the shape of the tubing or casing. If you feel physical discomfort or experience irritations, contact Audicus and/or a hearing professional.

### Tubings and Domes

At some point you will have to replace the tubing and ear-domes of your hearing aid. This might occur if you require a different-sized eardome or simply when the tubing wears down over the life of the device.

You can request these replacement tubes and eardomes from Audicus.

#### a. To attach/remove an eardome:

Place a new eardome on the tubing by pressing it over the rigged end portion of the tube. Make sure that the eardome is securely fastened onto the tube. You should be able to tug it slightly without removing it.

To remove the dome, pull it off the tube. The eardome is elastic; may slightly stretch when removing it, but should return to its original shape.

#### b. To remove/attach tube:

Unscrew the old tube from your hearing aid by rotating the tube counterclockwise. To attach tube, fasten it by rotating it in the clockwise direction.

## Memory Programs

The aBlue comes with up to 4 memory programs for different listening environments. These can be selected by pressing the button on the back of the hearing aid or with the remote control:

- Program 1: Automatic
- Program 2: Automatic + more volume
- Program 3: Automatic + less volume
- Program 4: Speech in noise

When a memory is selected, a beeping sound is emitted. For example, when Memory 1 is selected, one beep will sound. When Memory 2 is selected, two beeps will sound.

**NOTE: With the optional Bluetooth remote, the programs are:**

- Program 1: Automatic
- Program 2: Phone
- Program 3: eMini Media Bluetooth/Telecoil
- Program 4: Transmitter
- Program 5: Speech in noise



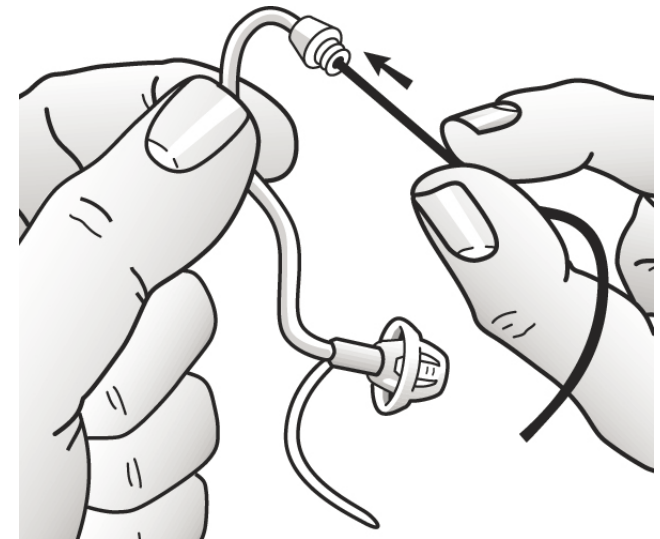
## Cleaning

Accumulated earwax in the tube and eardome can cause diminished sound quality. We highly recommend cleaning the eardome and tubing regularly.

Unscrew the tube from the hearing aid and clean the tube and dome on the outside with a dry cloth. Use the cleaning wire to extract debris out of the sound tube. The wire should be inserted where the tube attaches to the device and pushed all the way through the thin tube and out through the dome.

Make sure to keep the device dry at all times. Do not submerge the tubing, eardome or hearing aid in water, as it can damage the device.

Tubing and eardomes should be changed once every couple of months, due to regular wear and tear.



## Maintenance and Use

Your aBlue is a very durable device, if handled with care. Therefore, be particularly careful in the following everyday circumstances:

### Moisture

Moisture is one of the main causes of hearing aid failure. Protect your device from moisture at all times.

- Never wear your hearing aid in the shower, bath, sauna or while swimming
- Always keep the device protected when out in the rain
- If the device becomes wet, remove the battery and ensure the device is dry before using it again
- Never subject your device to hairspray, perfume, gel, cream or other cosmetic/medical products
- In areas of high humidity, periodically remove the device and put it in a warm place to dry out

### Temperature

Keep your hearing aids away from sources of high temperature at all times.

- Keep it away from fires, stoves, heating systems, boilers or other heating sources
- Do not wear your hearing aids when using a hair dryer
- Do not leave your hearing aid exposed to direct sunlight for an extended period of time

## Maintenance and Use

### Storage

- Always remove the battery from the device when not in use for extended periods
- Always store your hearing device in its case, in a clean and dry environment
- Keep your hearing aids from children and pets
- Consider a dehumidifier for most effective storage (see [www.audicus.com](http://www.audicus.com) for that)

### Other

- Do not allow others to use your instrument
- Do not wear a hearing aid when conducting an X-ray or MRI scan
- Handle the device over a flat surface, such as a table, to avoid dropping it
- Do not alter or attempt any repairs on the device, as it might void the warranty

## Accessories (NOTE: Optional)

### Basic Remote Control

The basic remote control allows you to change volume and programs wirelessly.

You can request and purchase the basic controller separately on the Audicus website ([www.audicus.com](http://www.audicus.com)).



### Bluetooth Remote Control

Your hearing aids together with the Bluetooth remote control will allow you to connect with your cellphone, mp3 player, TV, telecoil, radio, stereo, etc.

For detailed information and instructions refer to the Bluetooth user guides or the Audicus website ([www.audicus.com](http://www.audicus.com)).





## Trouble Shooting

While we are always here to help, you might be able to resolve the majority of issues very quickly yourself. If these guidelines do not resolve the problem, call us at **888 979 6918**.

Issue	Possible Cause	Action
<b>No sound</b>	<ul style="list-style-type: none"> <li>• Is the device switched on?</li> <li>• Is there a battery in the hearing aid?</li> <li>• Did the battery wear out?</li> <li>• Is the battery inserted correctly?</li> <li>• Is the tubing or eardome blocked?</li> <li>• Do you have excessive ear wax?</li> </ul>	<ul style="list-style-type: none"> <li>→ Switch it on by closing the battery door</li> <li>→ Insert a new battery</li> <li>→ Replace the old battery with a new one</li> <li>→ Insert the battery with the “+” facing up</li> <li>→ Clean the tubing and eardome</li> <li>→ See a physician</li> </ul>
<b>The sound is distorted or weak</b>	<ul style="list-style-type: none"> <li>• Did the battery wear out?</li> <li>• Did your hearing aid get moist?</li> <li>• Is the tubing or eardome blocked?</li> <li>• Are you using the right volume setting?</li> <li>• Do your have excessive ear wax?</li> </ul>	<ul style="list-style-type: none"> <li>→ Insert a new battery</li> <li>→ Dry your hearing aids</li> <li>→ Clean the tubing and eardome</li> <li>→ Change program or increase volume with remote control (optional)</li> <li>→ See a physician</li> </ul>

## Trouble Shooting

Issue	Possible Cause	Action
<b>There is a lot of “whistling” or feedback</b>	<ul style="list-style-type: none"> <li>• Is the eardome and tubing inserted correctly?</li> <li>• Are you using the right size of eardomes?</li> <li>• Is the volume too loud?</li> <li>• Are you holding your hand or a foreign object too close to the hearing aid?</li> <li>• Does it occur when using the telephone?</li> <li>• Do you have excessive ear wax?</li> </ul>	<ul style="list-style-type: none"> <li>→ Insert it correctly, so it sits snug</li> <li>→ Try different-size eardomes or a tulip dome</li> <li>→ Tone down the volume</li> <li>→ Create some space between the hearing aid and the object</li> <li>→ Position the telephone near, but not directly on the hearing instrument</li> <li>→ See a physician</li> </ul>
<b>Battery runs out quickly</b>	<ul style="list-style-type: none"> <li>• Did you leave your hearing aid switched on during the night?</li> </ul>	<ul style="list-style-type: none"> <li>→ Switch your hearing aid off by opening the battery door</li> </ul>

## Technical Information

### Technical Information

The aBlue is made for Audicus by Hansaton.

FCC-ID: WU7-WL002BTE

Operating frequencies:  $F_c = 3.28 \text{ MHz}$

Changes or modifications not expressly approved by the party responsible for compliance could void the users authority to operate the equipment.

This device complies with Part 15 of the FCC Rules. Operation is subject to the following conditions:

- (1) this device may not cause harmful interference, and
- (2) this device must accept any interference received, including interference that may cause undesired operation.

This equipment has been tested and found to comply with the limits for a Class B digital device, pursuant to Part 15 of the FCC Rules. These limits are designed to provide reasonable protection against harmful interference in a residential installation. This equipment generates, uses and can radiate radio frequency energy and, if not installed and used in accordance with the instructions, may cause harmful interference to radio communications. However, there is no guarantee that interference will not occur in a particular installation. If this equipment does cause harmful interference to radio or television reception, which can be determined by turning the equipment off and on, the user is encouraged to try to correct the interference by one or more of the following measures:

- Reorient or relocate the receiving antenna.
- Increase the separation between the equipment and receiver.
- Connect the equipment into an outlet on a circuit different from that to which the receiver is connected.
- Consult the dealer or an experienced radio/TV technician for help.

## Returns and Warranty

### **The Audicus 100% Happiness Guarantee**

If for any reason you are not satisfied with your Audicus hearing aid, you may return it within 45 days after purchase for a full refund of the original purchase price.

Note that we will not be able to maintain this guarantee if the device has been modified, tampered with, damaged or repaired by the user.

Please see the return instructions on the Audicus website.

### **Manufacturer Warranty**

All our hearing aids come with a full 12 month manufacturer guarantee that covers manufacturing defects. The guarantee will not be valid if the devices have been modified or damaged by the user, or if the serial number has been altered, or if repairs have been made without the consent and knowledge of Audicus.

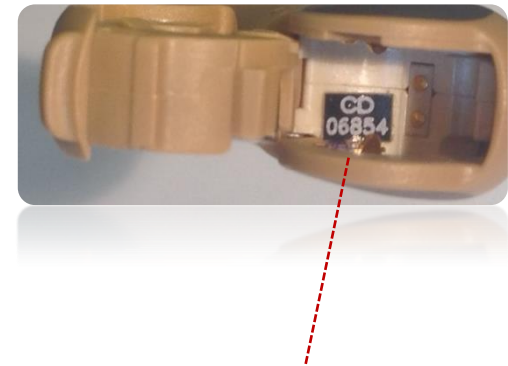
If your device stops functioning correctly and you believe you have a guarantee case, please download and print the return instructions on **[www.audicus.com](http://www.audicus.com)**.

### **Loss, Damage and Repairs**

If you lose or damage your hearing aids within the first 6 months, contact us for a discount on your next pair. Also, feel free to contact us if you think you require repairs on your device.

## Serial Identification

You can find your serial number inside the hearing aid. If you open the battery door, you will see a series of numbers. The serial number usually begins with two alphabetical letters, e.g. PF00459. Your hearing system professional can answer any questions you may have about the identifying code on your hearing system.



*Serial Number*

## Medical Information

Audicus' hearing aids are intended for healthy adults with standard mild to moderate hearing loss. They are not intended for anyone under 18 years of age.

Note that hearing loss can be a sign of a more serious medical condition and if you have not already done so, you should consult a licensed physician (preferably an ear specialist). If you experience any of the following symptoms, we strongly recommend contacting a physician:

- Excessive wax buildup, or a history of excessive wax buildup
- Visible congenital or traumatic deformity of the ear
- Fluid, blood or drainage from the ear within the past 90 days
- Sudden, rapidly progressing, or fluctuating hearing loss
- Spells of acute or chronic dizziness
- Hearing loss only on one side that worsened in the past 90 days
- Ear canal blockage, a lasting ear infection or a plugged up fullness feeling
- Audiometric air-bone gap equal to or greater than 15 decibels at 500 hertz (Hz), 1000 Hz and 2000 Hz.
- Pain or discomfort in the ear, including skin irritations
- Ringing in one or both ears within last 90 days

Note that a hearing aid is an assistive device. It will not restore normal hearing and will not prevent or improve a hearing impairment resulting from organic conditions. In most cases, infrequent use of a hearing aid does not permit a user to attain full benefit from it.

Also, keep in mind that a hearing aid is only a part of hearing habilitation and may need to be supplemented by auditory training and instruction in lip reading.

## Warnings and Side Effects

The best way to ensure better hearing is to practice listening with your hearing systems until you are able to wear them comfortably all day.

### Side Effects

The hearing system or earmold is a customized product. If you are experiencing discomfort, see your audiologist or hearing system professional immediately for modification of the hearing system or earmold at the point of irritation.

A hearing system or earmold may cause an accelerated accumulation of cerumen (earwax). Also in rare cases, the otherwise non-allergenic material may cause a discharge from the ear, allergic reaction, or any other unusual condition. Please seek immediate consultation with a physician if these conditions occur.

### Warnings

- Do not use your hearing system in potentially explosive environments.
- If you experience dizziness, drainage or bleeding from the ear, or sudden hearing loss, see your Physician immediately.
- A hearing system may cause an accelerated accumulation of cerumen (earwax).
- Keep hearing systems out of the reach of children, pets, and individuals with diminished mental capacity.
- Hearing systems should be used only as directed and adjusted by your trained hearing system professional.
- A hearing system may stop functioning, e.g. if the battery goes dead. You should be aware of this possibility, in particular if you are in traffic or otherwise depend on warning sounds.
- Do not switch hearing systems between ears or allow others to wear or use your hearing systems.

## Information for Prospective Users

Information for U.S. users from the Federal Drug Administration, Department of Health, Education, and Welfare, Rules and Regulations for Medical Devices part 801- Hearing Aid Devices, Professional and Patient Labeling and Conditions for Sale:

Good health practice requires that a person with a hearing loss have a medical evaluation by a licensed physician (preferably a physician who specializes in diseases of the ear) before purchasing a hearing aid. Licensed physicians who specialize in diseases of the ear are often referred to as otolaryngologists, otologists or otorhinolaryngologists.

The purpose of medical evaluation is to assure that all medically treatable conditions that may affect hearing are identified and treated before the hearing aid is purchased.

Following the medical evaluation, the physician will give you a written statement that your hearing loss has been medically evaluated and you may be considered a candidate for a hearing aid.

Federal law restricts the sale of hearing aids to those individuals who have obtained a medical evaluation from a licensed physician. Federal law permits a fully informed adult to sign a waiver statement declining the medical evaluation for religious or personal beliefs that preclude consultation with a physician. The exercise of such a waiver is not in your best health interest and its use is strongly discouraged.







## Contact Us

### **Audicus, Inc**

50 Harrison Street, PH #403  
Hoboken, NJ 07030  
USA

Tel: 888 979 6918

Email: [contact@audicus.com](mailto:contact@audicus.com)

[www.audicus.com](http://www.audicus.com)