

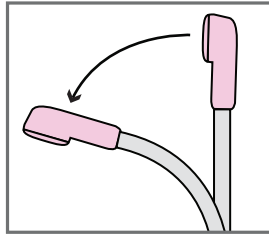
Package Contents: One necomimi™ headset, one pair of white cat ears (AAA batteries not included)

necomimi™ has three brainwave sensor locations. One on the forehead and two on the ear. All must be touching your skin for necomimi™ to work.

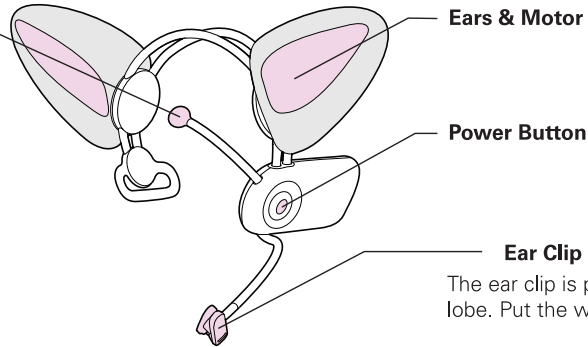
Brainwave Sensor



The sensor tip should touch the skin above your left eyebrow with a little pressure.

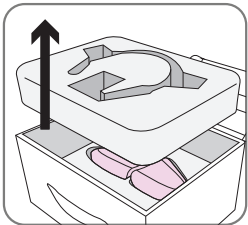


Bend the arm to get the best fit.

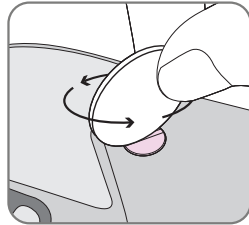


The ear clip is placed on the left ear lobe. Put the wire behind your ear.

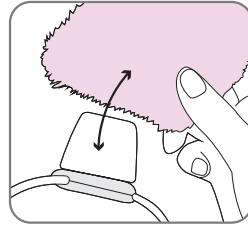
How to Start



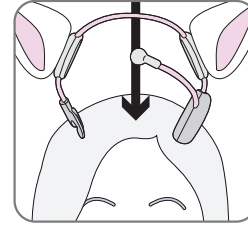
1. Ears Under Top Tray



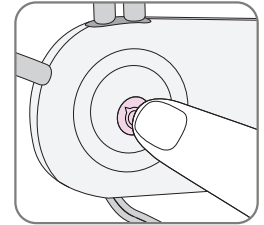
2. Unscrew Battery Door



3. Ears Slip Over Motor

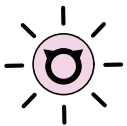


4. Place on Head



5. Press Power Button

Ear Movement States



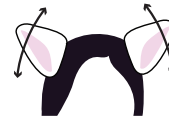
Low Battery
Power button will blink



Lost Sensor Contact
One ear will perk up
one will droop



High Relaxation
Ears will droop
down slowly



Focus/Relaxation
Ears will perk up
and droop down



High Focus
Ears will perk
up quickly



High Interest
Ears will perk
up and wiggle