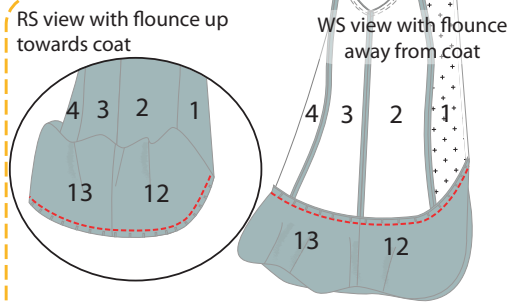
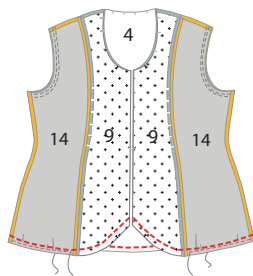


**23.** Turn Flounce RS out & press. Topstitch sides & bottom of flounce. Staystitch opening close.



**24.** On RS of coat, pin top edge of Flounce to bottom of coat. Match Flounce seams & T notches with seams of coat. Clip Flounce where necessary. Stitch Flounce to coat using 5/8" SA.

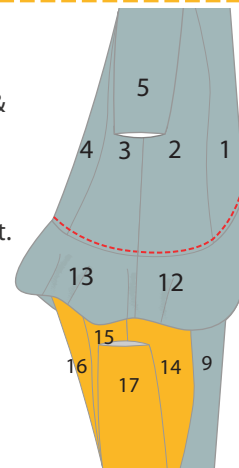
## View A only - Join Lining/Facings to Coat



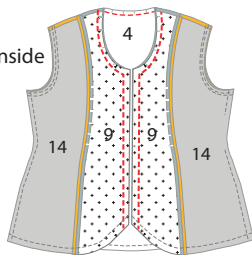
**25.** With Flounce sandwiched between coat & Lining/Facing, pin bottom of Lining/Facing to Flounce/Coat, matching seams & notches. Ease in fullness along Side Front & Back Linings. Stitch together. Trim SA & clip corners.

(partial side view)

**26.** With Flounce & Lining away from coat, topstitch bottom of coat, stitching SA to coat.



(sleeves are inside of lining)



**27.** With RS together, pin Front Facings to Fronts & pin Back Facing to Back. Flounce should be sandwiched between coat & lining. Match raw edges, notches, & shoulder seams. Clip neckline of Facing where necessary. Stitch together. Trim Facing neckline SA.

