

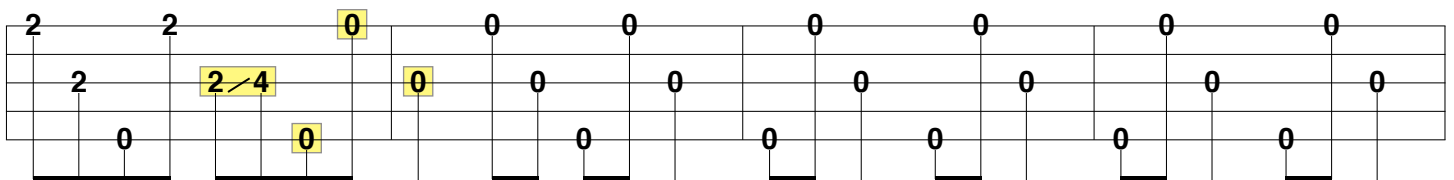
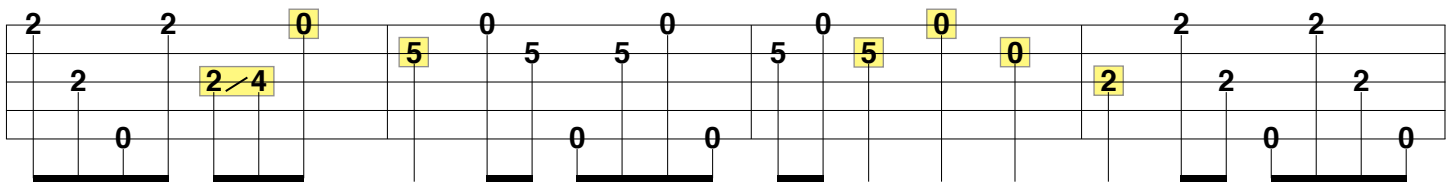
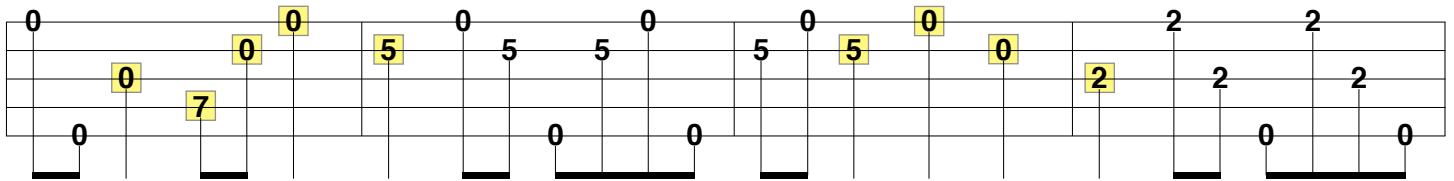
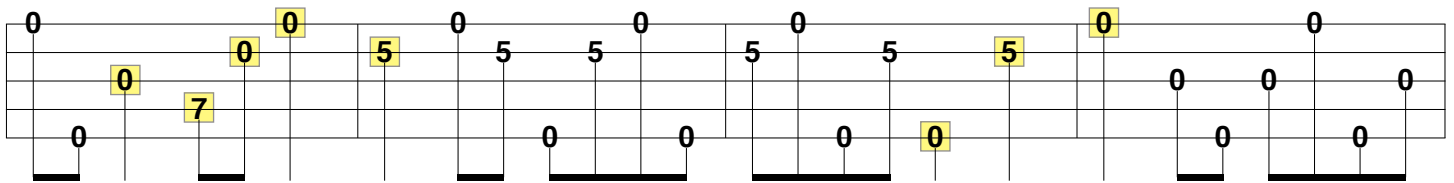
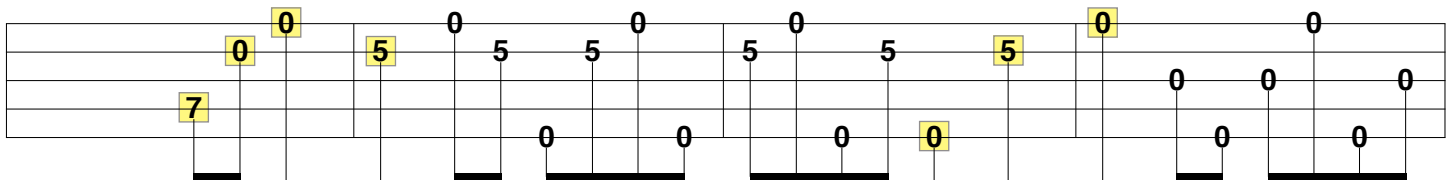
# Wish You Were Here

## Pink Floyd

Tuning (G D G B D)

- Accent the notes highlighted in yellow for the main riff.
- During the verse you can either strum the chords or use the picking pattern I created!

### Intro / Main Riff



*From here you can repeat the 1st page or play the solo...*

**Solo**

Verse C

Ukulele tablature for Verse C, measures 1-4. The first four measures are in the C chord. Fingerings are: 2 1 0 1, 2 2 1, 2 1 0 1, 2 2 1. The fifth measure is in the D chord with fingerings 4 3 2 3. The sixth and seventh measures are in the C chord with fingerings 4 4 3 and 4 3 2 3. The eighth measure is in the D chord with fingerings 4 4 3.

D

Am

G

Ukulele tablature for Verse C, measures 5-8. Measures 5-8 are in the Am chord. Fingerings are: 2 1 2 1, 2 2 1, 2 1 2 1, 2 2 1, 5 3 0 3, 5 5 3, 5 3 0 3, 5 5 3.

D

C

Ukulele tablature for Verse C, measures 9-12. Measures 9-12 are in the D chord. Fingerings are: 4 3 2 3, 4 4 3, 4 3 2 3, 4 4 3, 2 1 0 1, 2 2 1, 2 1 0 1, 2 2 1.

Am

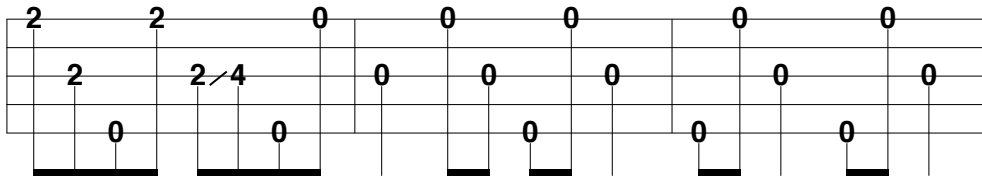
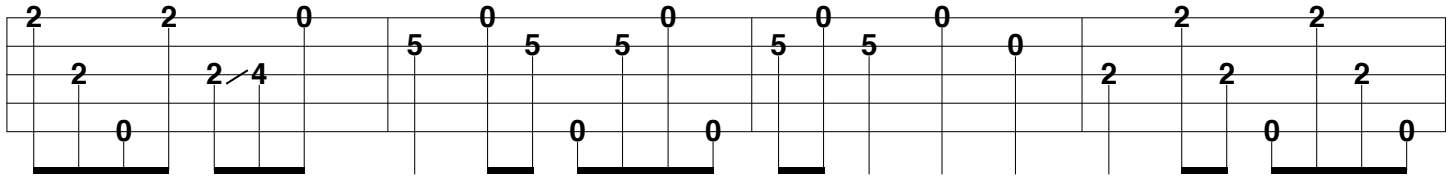
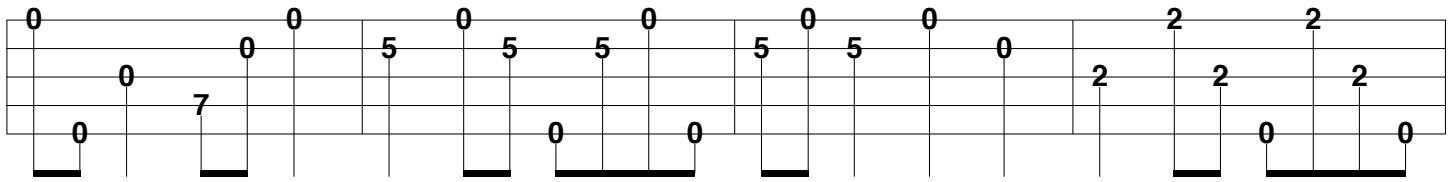
G

Ukulele tablature for Verse C, measures 13-16. Measures 13-16 are in the Am chord. Fingerings are: 2 1 2 1, 2 2 1, 2 1 2 1, 2 2 1, 5 3 0 3, 5 5 3, 5 3 0 3, 5 5 3. A first ending bracket covers measures 15 and 16.

Main Riff

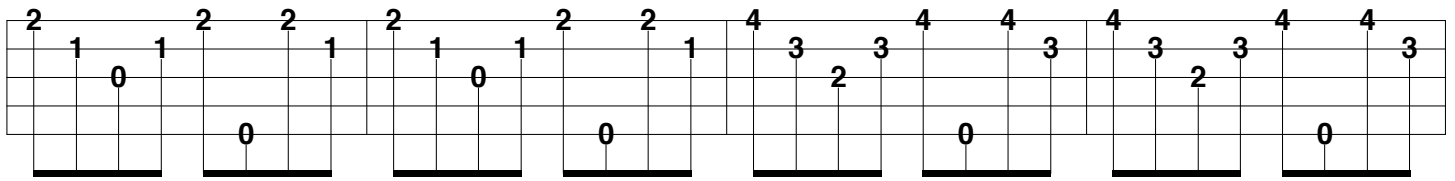
Ukulele tablature for Main Riff, first ending. It consists of two staves. The first staff has fingerings: 0, 0, 0, 5, 0, 5, 5, 0, 5, 0, 5, 5, 0, 0, 0, 0. The second staff has fingerings: 0, 7, 0, 0, 0, 0, 0, 0, 0, 0, 0, 0, 0, 0, 0, 0. A first ending bracket covers the entire section.

Ukulele tablature for Main Riff, second ending. It consists of two staves. The first staff has fingerings: 0, 0, 0, 5, 0, 5, 5, 0, 5, 0, 5, 5, 0, 0, 0, 0. The second staff has fingerings: 0, 7, 0, 0, 0, 0, 0, 0, 0, 0, 0, 0, 0, 0, 0, 0.



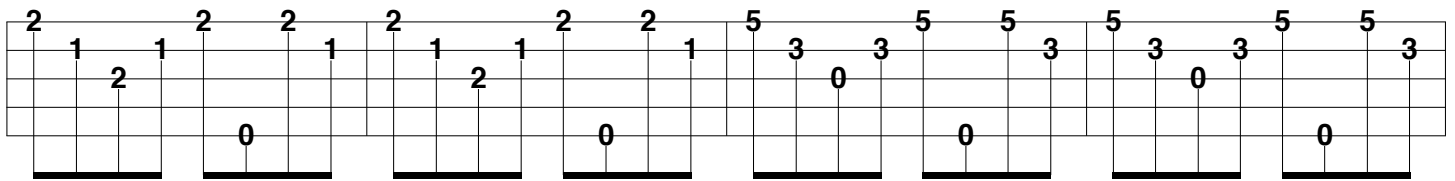
“How I Wish...” C

D



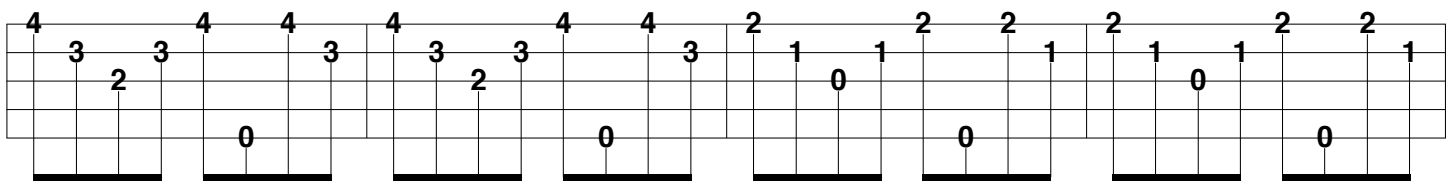
Am

G



D

C



Am

G

Main Riff

The first staff of guitar notation for the Am section consists of six measures. The first four measures are grouped under the 'Am' chord label. Each measure contains a power chord on the low E string with a specific fretting pattern: (2, 1, 2), (2, 2, 1), (2, 1, 2), and (2, 2, 1). The fifth and sixth measures are grouped under the 'G' chord label and feature a power chord on the low E string with fretting patterns (5, 3, 3) and (5, 5, 3). The final measure of the staff contains a sequence of notes: 0, 7, 0, 0.

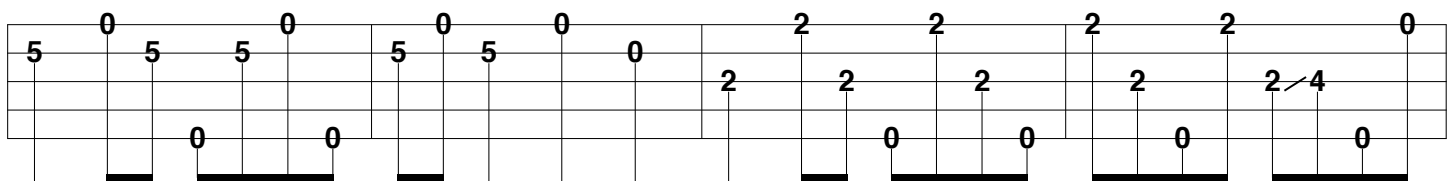
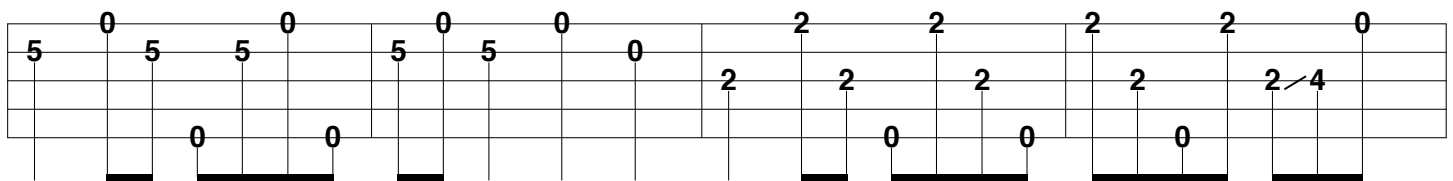
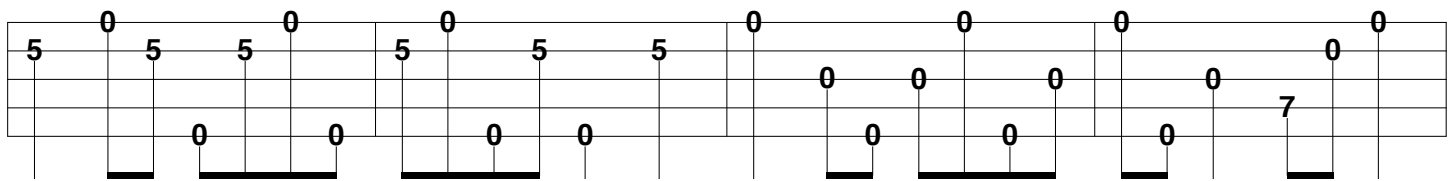
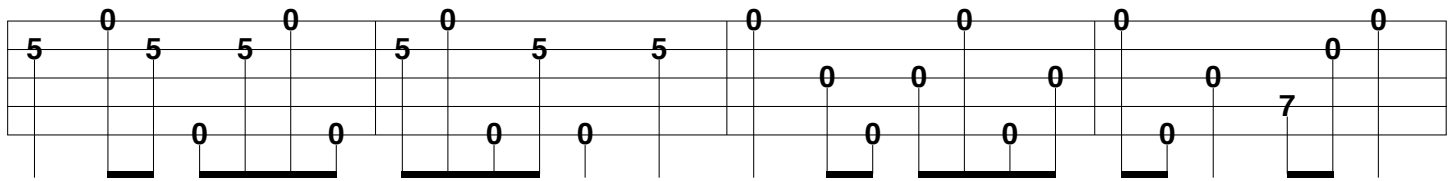
The second staff of guitar notation for the Am section consists of six measures. The first four measures are grouped under the 'Am' chord label and feature a power chord on the low E string with fretting patterns (5, 0, 5), (5, 0, 5), (5, 0, 5), and (5, 0, 5). The fifth and sixth measures are grouped under the 'G' chord label and feature a power chord on the low E string with fretting patterns (0, 0, 0) and (0, 0, 0). The final measure of the staff contains a sequence of notes: 0, 7, 0, 0.

The third staff of guitar notation for the Am section consists of six measures. The first four measures are grouped under the 'Am' chord label and feature a power chord on the low E string with fretting patterns (5, 0, 5), (5, 0, 5), (5, 0, 5), and (5, 0, 5). The fifth and sixth measures are grouped under the 'G' chord label and feature a power chord on the low E string with fretting patterns (0, 0, 0) and (0, 0, 0). The final measure of the staff contains a sequence of notes: 0, 7, 0, 0.

The fourth staff of guitar notation for the Am section consists of six measures. The first four measures are grouped under the 'Am' chord label and feature a power chord on the low E string with fretting patterns (5, 0, 5), (5, 0, 5), (5, 0, 5), and (5, 0, 5). The fifth and sixth measures are grouped under the 'G' chord label and feature a power chord on the low E string with fretting patterns (2, 2, 2) and (2, 2, 2). The final measure of the staff contains a sequence of notes: 0, 2, 4, 0.

The fifth staff of guitar notation for the Am section consists of six measures. The first four measures are grouped under the 'Am' chord label and feature a power chord on the low E string with fretting patterns (5, 0, 5), (5, 0, 5), (5, 0, 5), and (5, 0, 5). The fifth and sixth measures are grouped under the 'G' chord label and feature a power chord on the low E string with fretting patterns (2, 2, 2) and (2, 2, 2). The final measure of the staff contains a sequence of notes: 0, 2, 4, 0.

The sixth staff of guitar notation for the Am section consists of six measures. Each measure contains a power chord on the low E string with a fretting pattern of (0, 0, 0). The final measure of the staff contains a sequence of notes: 0, 7, 0, 0.



*fade out...*

