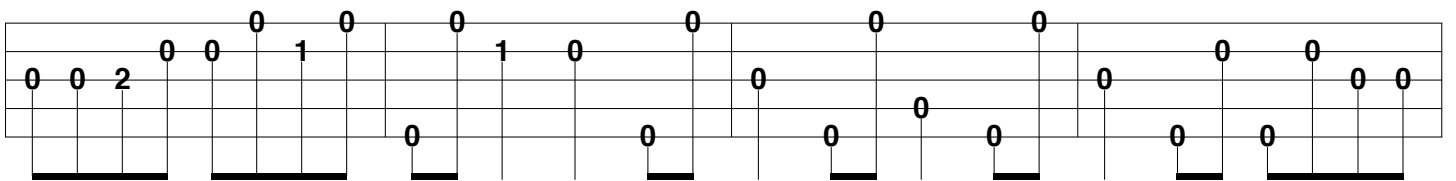
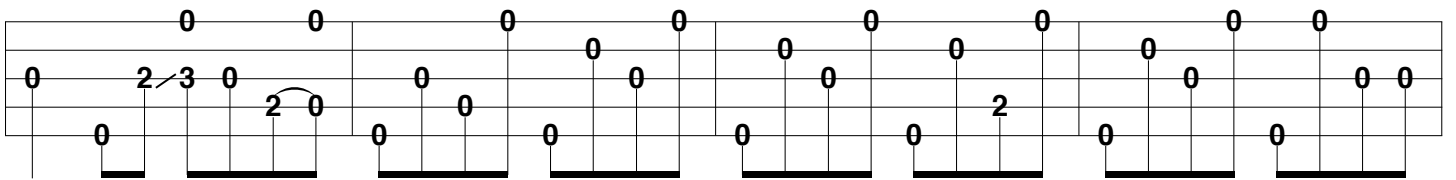
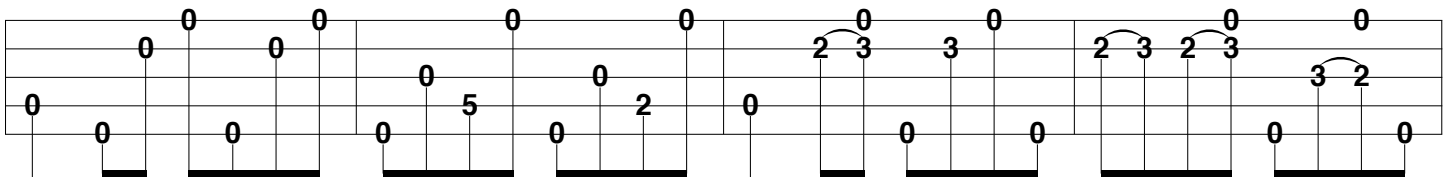
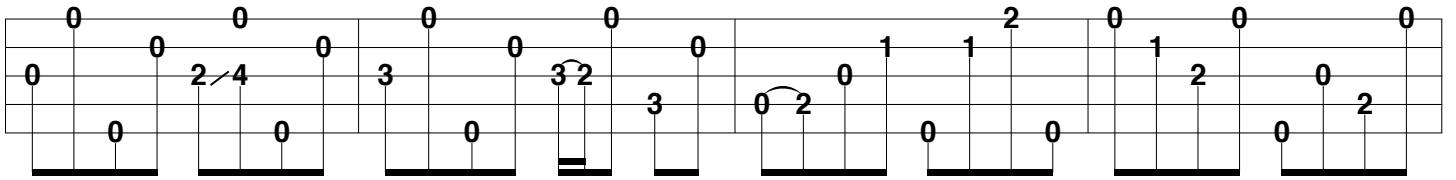
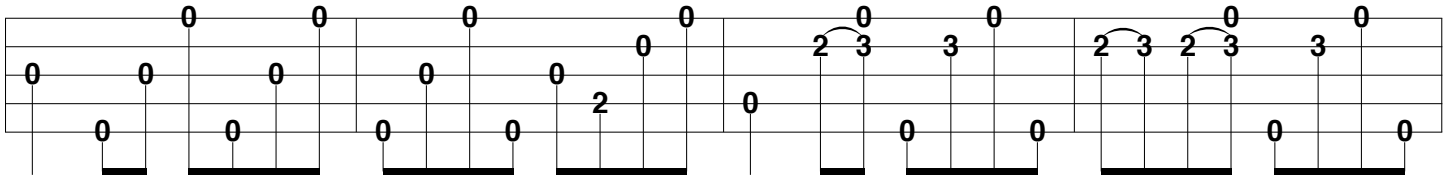
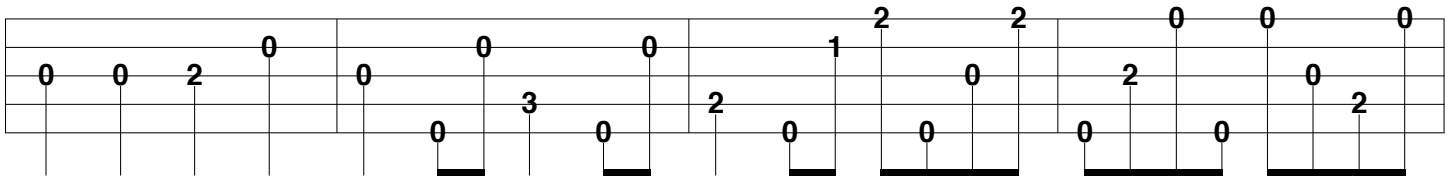


Dueling Banjos (Part 2)

From "Deliverance"



0 0 2 0 0 0 1 0 | 0 0 1 0 0 0 | 1 2 1 1 | 2 0 0 0 5 5

5 5 7 5 5 6 5 | 8 5 6 5 0 0 | 0 0 0 0 | 0 0 0 0

0 0 1 0 | 3 0 1 0 1 | 0 1 0 | 2 1 0 0 7 7

7 7 9 7 7 8 7 | 10 7 8 7 0 0 0 0 0 0 0 0 0 0 0 0

0 0

0 0 0 1 0 0 | 1 2 0 0 2 0 0 0 0 0 0 0 0 0 0 0

0 0 1 0 0 | 1 2 0 0 2 0 0 0 | 2 0 0 0 2 4 0 0 2 4

4 0 0 0 0 | 2 4 0 0 0 3 0 0 | 1 3 1 0 1 0 1 0 1 0 1 | (3) 3 1 (3)

2 5 4 5 0 0 0 0 0 0 | 2 3 0 0 2 3 0 0 | 2 3 3 0 2 3 2 3 3 0 0 0

0 0 0 0 0 0 0 0 | 2 3 2 3 2 3 2 3 0 0 1 0 1 1 1 | 0 0 1 0 1 1 1 | 0 0 1 0 2 3 1

0 0 0 0 0 0 0 0 | 2 3 0 3 2 2 5 0 5 0 2 5 0 0 | 2 3 3 0 2 3 2 3 3 2 0 0 0 0

0 0 0 0 0 0 0 0 | 1 3 1 0 1 0 1 0 1 0 1 0 1 | (3) 3 1 (3) 3 1 0 (3)

First system of guitar tablature. The top staff contains fret numbers: 0, 0, 0, 0, 0, 0, 0, 0, 0, 0, 0, 0. The bottom staff contains fret numbers: 2, 0, 2/5, 0, 0, 0, 0, 2/3, 0, 2, 3, 3, 0, 2, 3, 2, 3, 3, 0, 0, 0, 0.

Second system of guitar tablature. The top staff contains fret numbers: 0, 0. The bottom staff contains fret numbers: 2/3, 2/3, 2/3, 2/3, 3, 2, 0, 0, 1, 1, 1, 2, 0, 0, 1, 0, 1, 2/3, 1, 0, 0.

Third system of guitar tablature. The top staff contains fret numbers: 0, 0. The bottom staff contains fret numbers: 2/3, 0, 3, 2, 2/5, 0, 5, 0, 2/5, 0, 2, 3, 3, 0, 2, 3, 2, 3, 3, 2, 0, 0, 0, 0.

Fourth system of guitar tablature. The top staff contains fret numbers: 0, 0, 0, 0, 2, 5, 5, 5, 2, 0, 0, 0, 0, 0, 0, 0, 0, 0, 0, 0, 0, 0. The bottom staff contains fret numbers: 0, 2/3, 0, 2, 0, 2, 0, 0, 0, 0, 0, 0, 2/3, 0, 0, 0, 0, 0, 0, 0, 0, 0, 0.

Fifth system of guitar tablature. The top staff contains fret numbers: 0, 0. The bottom staff contains fret numbers: 2/3, 0, 2/3, 0, 2/3, 0, 2/3, 0, 2/3, 0, 2, 0, 2, 0, 0, 0, 0, 0, 0, 0, 0, 0.

Sixth system of guitar tablature. The top staff contains fret numbers: 9, 8, 9, 0, 6, 5, 7, 5, 7, 7, 0, 0, 0, 0, 0, 0, 0, 0, 0, 0, 0, 0. The bottom staff contains fret numbers: 11, 0. There are two upward-pointing arrows labeled '1/2' above the first two measures.