

# iSee310

EYE MASSAGER

---

# USER MANUAL

---

OBM Distribution / Breo-USA  
13900 Sycamore Way  
Chino, CA 91710  
<http://www.breousa.com>  
[info@breousa.com](mailto:info@breousa.com)

**breo**<sup>®</sup>

---

**Thank you for purchasing  
BREO iSee310.**

Please read this manual carefully before using  
the product, and keep it in a safe place for future  
reference.

---

# Contents

---

Introduction	3
Inside the Package	3
Function Deployment	4
Preparation	5
Operation	6
Precautions	7-8
Troubleshooting & Technical Parameters	9

# Introduction

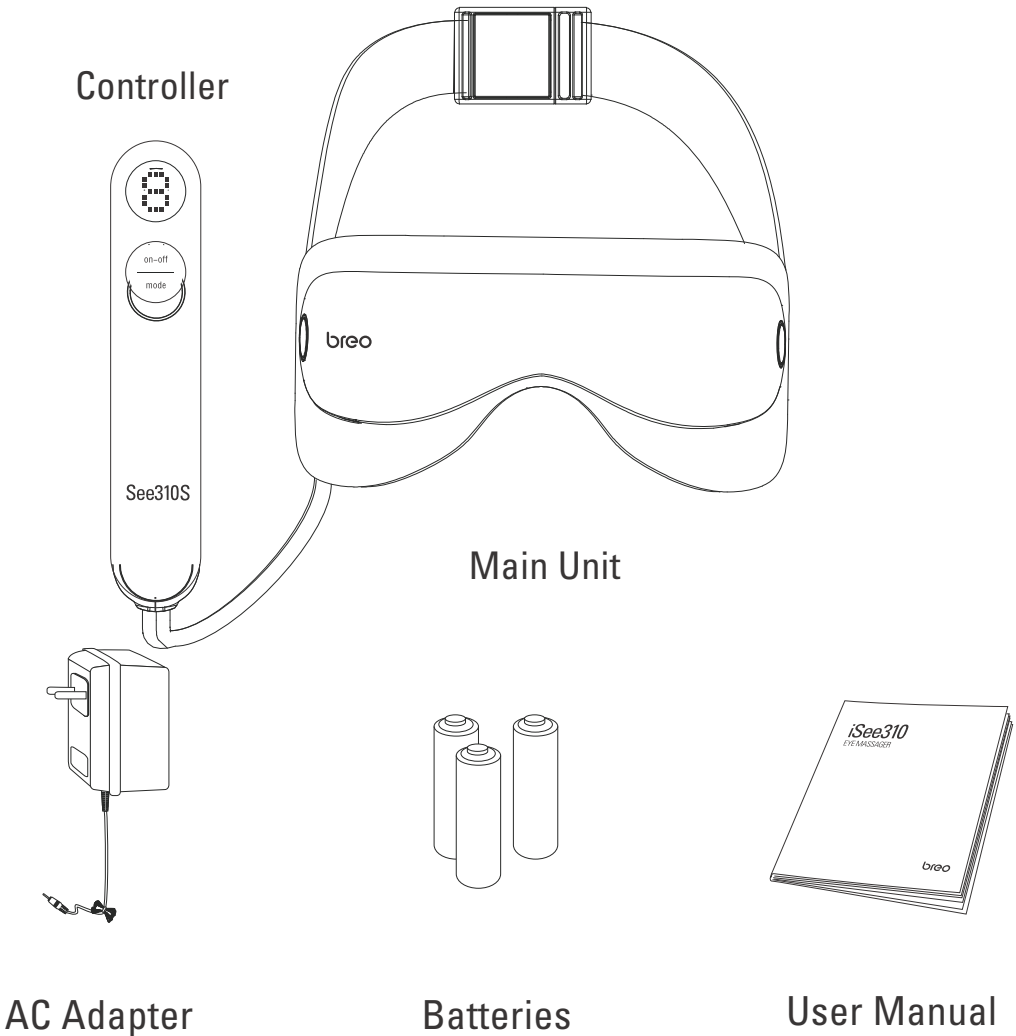
---

iSee310 adopts air pressure and hot compress massaging technology. It rubs, presses, hot compresses, and massages the ocular region in order to relax it.

# Inside the Package

---

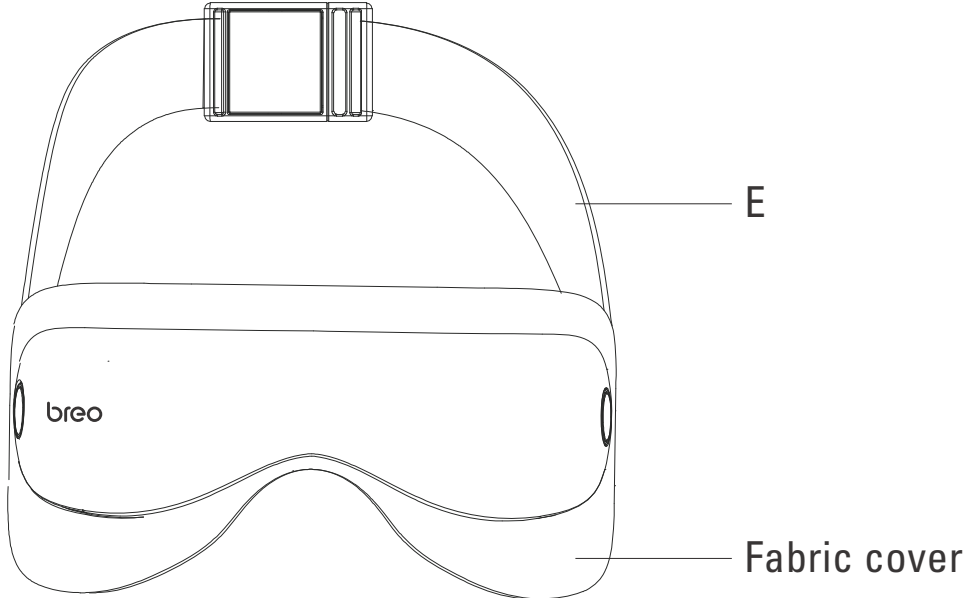
The package includes: Main Unit, Controller, AC Adapter, Batteries, User Manual.



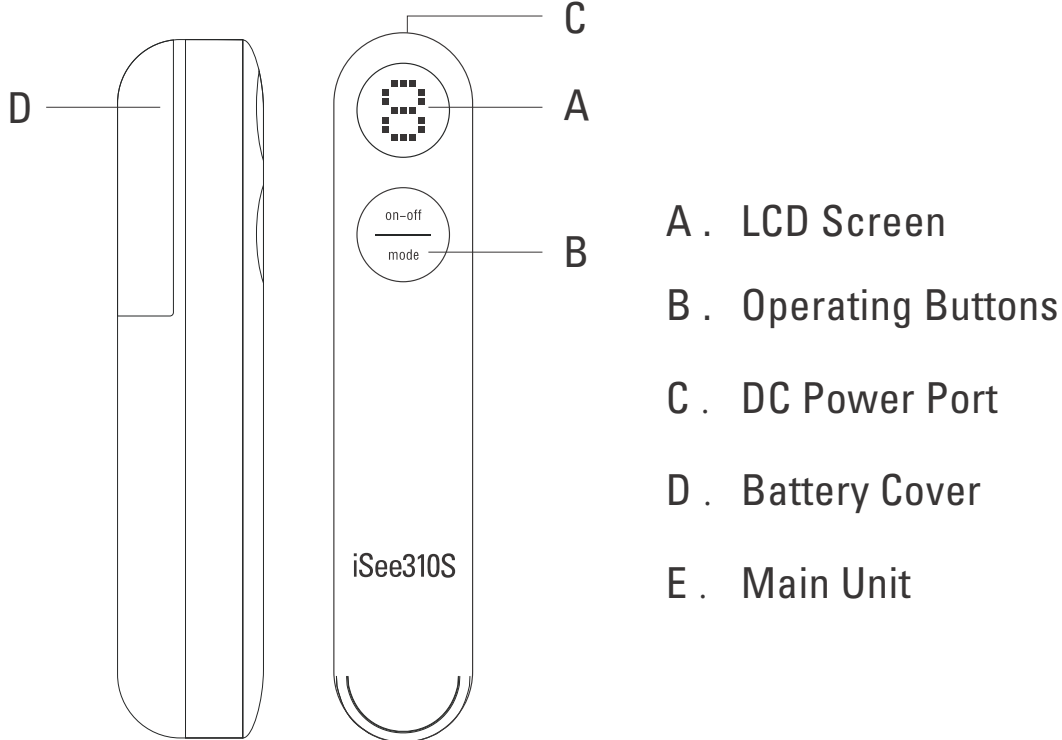
# Function Deployment

---

## Main Unit



## Controller



# Preparation

---

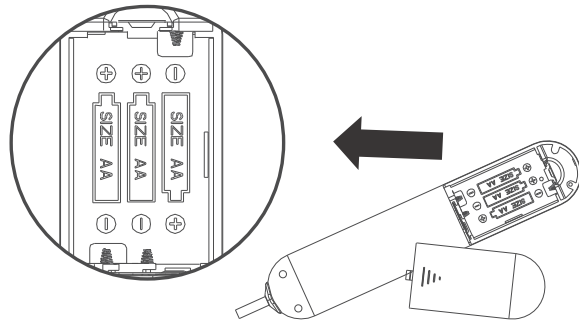
**Prior to use, check the integrity of the machine and accessories:**

- a. No damage on connection between controller and main unit
- b. Battery power is sufficient
- c. No damage on AC adapter

## Power Options

### 1. Batteries

- a. Open the battery cover on the back of the controller.
- b. Install 3 AA batteries in accordance with the positive and negative poles.
- c. Close the battery cover.

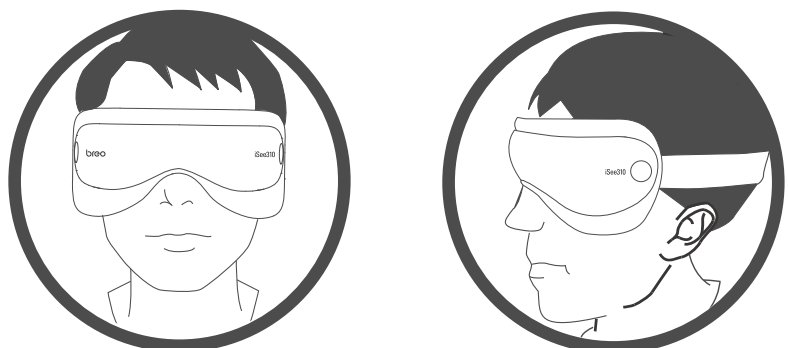


### 2. AC Adapter

- a. Insert the AC adapter in the controller's DC port.
- b. Connect the other end to AC power socket.

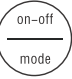
\* Choose power option #1 OR #2.

## Wear

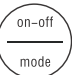


# Operation

---

Power on – Press and hold  Button  
Preset default is air pressure + hot compress for 15 minutes.

Manually operate related function buttons to switch between air pressure and hot compress modes.

Power off – Press and hold  Button again

## **Manual mode**

ON-OFF/Hot compress Button – Press and hold ON-OFF to start up the machine (into preset mode); Press the same button to select hot compress modes (low or high temperature)

Press and hold it again to shut down the machine

Mode/Air pressure Button – Press Mode button to select from 3 modes (Relaxing / Soft / Comfortable)

# Precautions

---

1. Please read the manual carefully and operate accordingly.
2. Children under 7 years old cannot use the massager.
3. This massager should not be used by:
  - a. People who suffer from brain disease or have undergone brain surgery
  - b. People who are suffering from glaucoma, retinoschisis, or other serious eye diseases
  - c. People who have physical or mental disorder
4. Take off contact lenses/eye glasses before use.
5. Put on/wear the unit first BEFORE turning the power on.
6. Do not use while walking or driving.
7. Keep your eyes closed for a few seconds after use, then open them slowly.
8. Keep the massager away from humidity, heat, and/or corrosive gas.
9. If the massager will not be used for a long time, remove the batteries to avoid battery leakage.
10. This massager is designed as a personal care product. It is not for diagnosis/treatment of any health disorder, nor meant for commercial use.
11. To clean, wipe with aseptic cotton and alcohol. Do not wash or immerse in water.



12. This product is not a substitute for healthcare professionals' advice and treatment. In case of doubt or if necessary, please consult your healthcare professional.
13. This device complies with Part 15 of the FCC Rules. Operation is subject to the following two conditions:
  - (1) this device may not cause harmful interference, and
  - (2) this device must accept any interference received, including interference that may cause undesired operation.
14. Please note that changes or modifications not expressly approved by the party responsible for compliance could void the user's authority to operate the equipment.
15. This equipment has been tested and found to comply with the limits for a Class B digital device, pursuant to Part 15 of the FCC Rules. These limits are designed to provide reasonable protection against harmful interference in a residential installation. This equipment generates, uses and can radiate radio frequency energy and, if not installed and used in accordance with the instructions, may cause harmful interference to radio communications. However, there is no guarantee that interference will not occur in a particular installation. If this equipment does cause harmful interference to radio or television reception, which can be determined by turning the equipment off and on, the user is encouraged to try to correct the interference by one or more of the following measures:
  - Reorient or relocate the receiving antenna.
  - Increase the separation between the equipment and receiver.
  - Connect the equipment into an outlet on a circuit different from that to which the receiver is connected.
  - Consult the dealer or an experienced radio/TV technician for help.

# Troubleshooting & Technical Parameters

---

When operational problems occur, please refer to the chart below.  
Do not disassemble the machine or try to repair it by yourself.

Problem	Possible Reason	Possible Solution
Power-ON failure	Cable is broken / in bad condition	Check the condition of the cable
	Batteries are low / out	Change batteries
	Batteries are not installed correctly	Check if positive/negative poles of batteries are positioned right Make sure the batteries are snug in place
	AC adapter is not connected properly	Check the connection of the AC adapter to the power socket .
Weak heat or air pressure	Batteries are low / out	Change batteries Make sure the batteries are installed correctly and snug in place

## Technical Parameters

Power supply :	DC: 4.5V 1000mA
Ideal environment:	Temperature: 5°C - 40°C Relative humidity: : ≤80%
Dimension :	Main Unit: 220mm X 100mm X 86mm Controller: 184mm X 36mm X 39mm
Net Weight:	390g
Power :	4.5W
Air pressure strength :	5hpa-400hpa
Heating temperature :	30°C-45°C